



## Texas Crop Progress and Condition

Southern Plains Regional Field Office  
Post Office Box 70 Austin, Texas 78767  
(800) 626-3142 · FAX (855) 270-2725 · [www.nass.usda.gov/tx](http://www.nass.usda.gov/tx)

**Issue: TX-CW2423**

**Weekly Summary for June26- July 2**

**Released: July 3, 2023**

Rainfall mainly occurred in the western part of Texas from trace amounts to 2.00 inches of precipitation. Isolated areas in the Southern Low Plains and the Edwards Plateau received up to 6.50 inches. High temperatures and dry conditions were observed in most of the state. Drought conditions ranged from none to exceptionally dry with areas in the Edwards Plateau being the driest. There was an average of 6.6 days suitable for fieldwork.

**Row Crops:** In the Upper Coast, the Coastal Bend and the Lower Valley, corn and sorghum harvest was underway. Corn dough reached 45 percent, down 3 points from the previous year. Sorghum headed reached 64 percent, the same as the previous year. In the Plains, the early planted cotton began to bloom. In the Lower Valley, cotton continued to develop under irrigation and was in the blooming stage with early planted cotton starting to set bolls. Cotton squaring reached 36 percent for the state, up 2 points from the previous year. Sunflowers planted reached 90 percent, down 3 points from the previous year. Rice headed reached 46 percent, up one point from the previous year. Soybean emerged reached 90 percent, down 4 points from the previous year. Feral hog damages remained an issue in North East Texas.

**Fruit, Vegetable, and Specialty Crops:** In South Texas and South East Texas, watermelon and cantaloupe were being harvested.

**Livestock, Range and Pasture:** Supplemental feeding of livestock continued due to heat condition in the Northern Low Plains and South Texas. Hay harvest continued in most areas of the state. Cattle prices remained high in most of the livestock districts. Range and pasture suffered from heat stress and condition was rated poor to fair.

### Crop Progress

Stage	Percent of Acreage			
	Current Week	Previous Week	Previous Year	5 Year Average
<b>Corn</b>				
Silked	73	67	71	67
Dough	45	27	48	46
<b>Cotton</b>				
Planted	96	93	100	100
Squaring	36	22	34	34
<b>Peanuts</b>				
Planted	96	92	98	97
Pegging	10	3	9	7
<b>Rice</b>				
Headed	46	25	45	49
<b>Sorghum</b>				
Headed	64	51	64	64
Coloring	40	10	43	45
<b>Soybeans</b>				
Planted	96	92	97	98
Emerged	90	83	94	93
Blooming	41	28	58	50
<b>Sunflowers</b>				
Planted	90	80	93	86
Harvested	9	7	8	11
<b>Winter Wheat</b>				
Harvested	86	74	92	87
<b>Oats</b>				
Harvested	90	80	94	92

### Crop Condition

Crop	Percent of Acreage					Index <sup>1</sup>	
	Excellent	Good	Fair	Poor	Very Poor	2023	2022
Corn	13	54	25	6	2	80	50
Cotton	5	29	34	21	11	58	43
Peanuts	3	49	44	3	1	75	63
Rice	8	73	15	4	0	84	76
Sorghum	9	45	36	8	2	74	41
Soybeans	15	36	32	8	9	71	68
Wheat	9	30	29	21	11	60	21
Oats	2	26	45	8	19	56	26
Range and Pasture	4	22	23	35	16	48	23

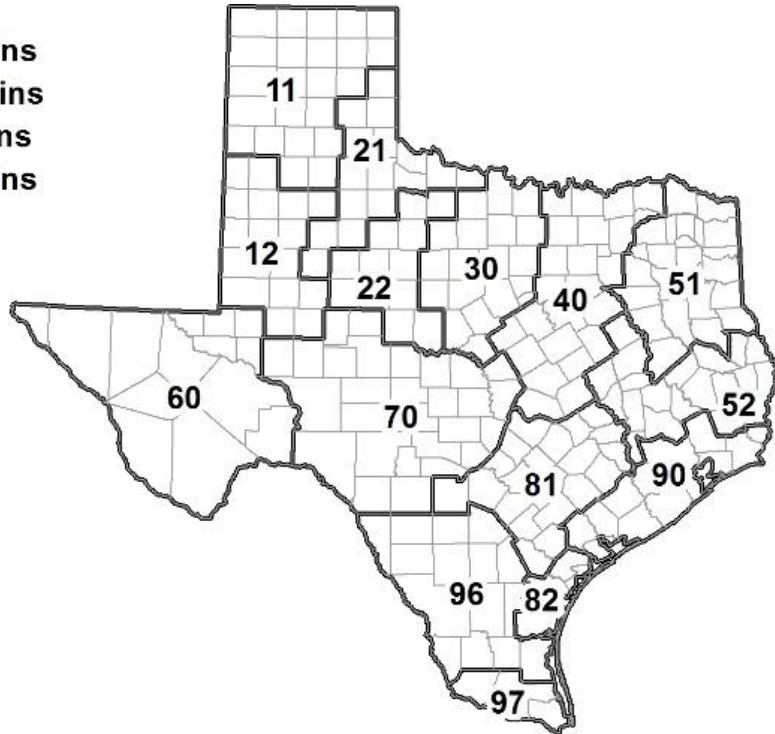
<sup>1</sup> The formula for the condition index is  $I = (5V + 25P + 60F + 90G + 110E)/100$  where I = crop condition index and V, P, F, G, E = percentage of crop rated very poor, poor, fair, good, excellent.

### Soil Moisture and Days Suitable by District

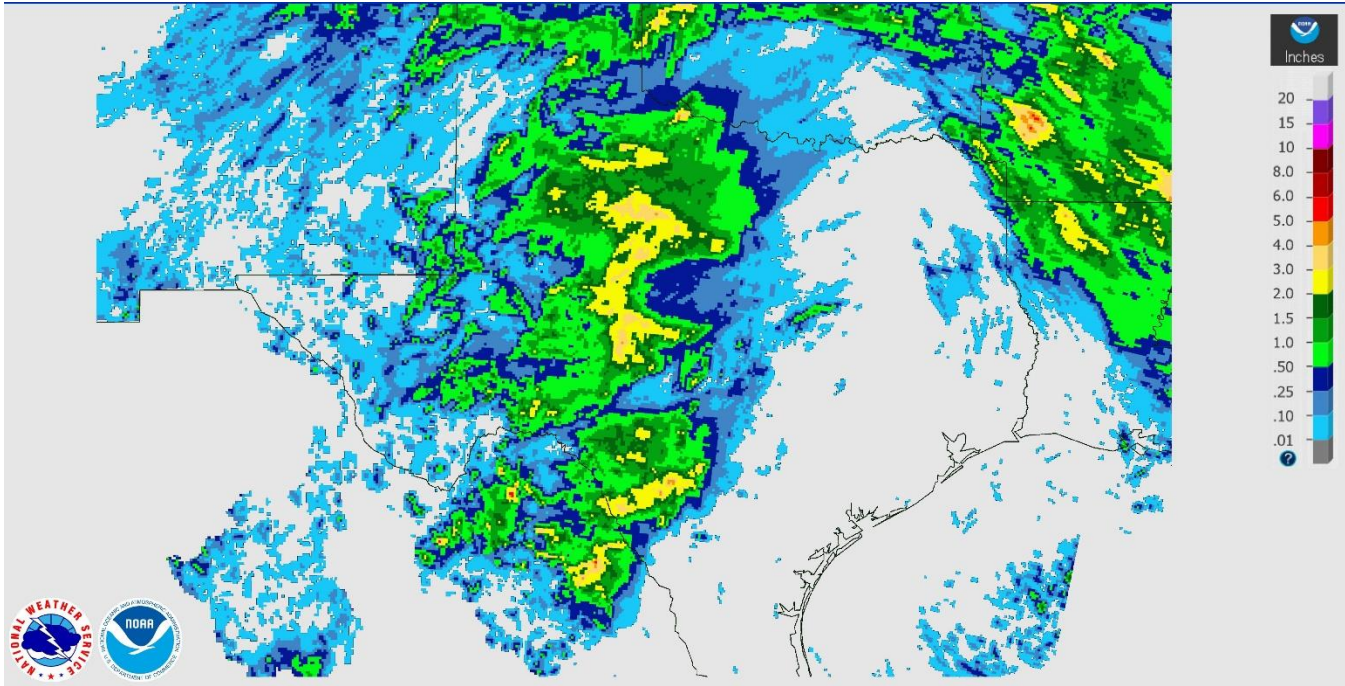
District	Subsoil Moisture Condition by District				Topsoil Moisture Condition by District				Days Suitable for Fieldwork
	Percentage of Acreage				Percentage of Acreage				
	Very Short	Short	Adequate	Surplus	Very Short	Short	Adequate	Surplus	
11	3	20	74	3	5	34	57	4	6.2
12	6	80	14	0	2	88	10	0	7.0
21	19	38	40	3	22	41	34	3	6.8
22	7	49	42	2	32	36	28	4	6.0
30	7	63	30	0	23	58	19	0	6.3
40	25	44	30	1	34	43	23	0	6.8
51	2	36	51	11	3	40	50	7	6.8
52	4	48	48	0	7	50	43	0	6.9
60	89	8	3	0	89	8	3	0	6.2
70	25	55	20	0	24	66	10	0	6.9
81	4	63	33	0	8	63	29	0	6.8
82	100	0	0	0	100	0	0	0	7.0
90	23	44	32	1	35	52	13	0	6.1
96	30	56	14	0	49	45	6	0	6.5
97	9	52	39	0	11	81	8	0	7.0
State	14	46	38	2	19	51	28	2	6.6

### Texas Agricultural Districts

- 11 Northern High Plains
- 12 Southern High Plains
- 21 Northern Low Plains
- 22 Southern Low Plains
- 30 Cross Timbers
- 40 Blacklands
- 51 North East
- 52 South East
- 60 Trans-Pecos
- 70 Edwards Plateau
- 81 South Central
- 82 Coastal Bend
- 90 Upper Coast
- 96 South
- 97 Lower Valley

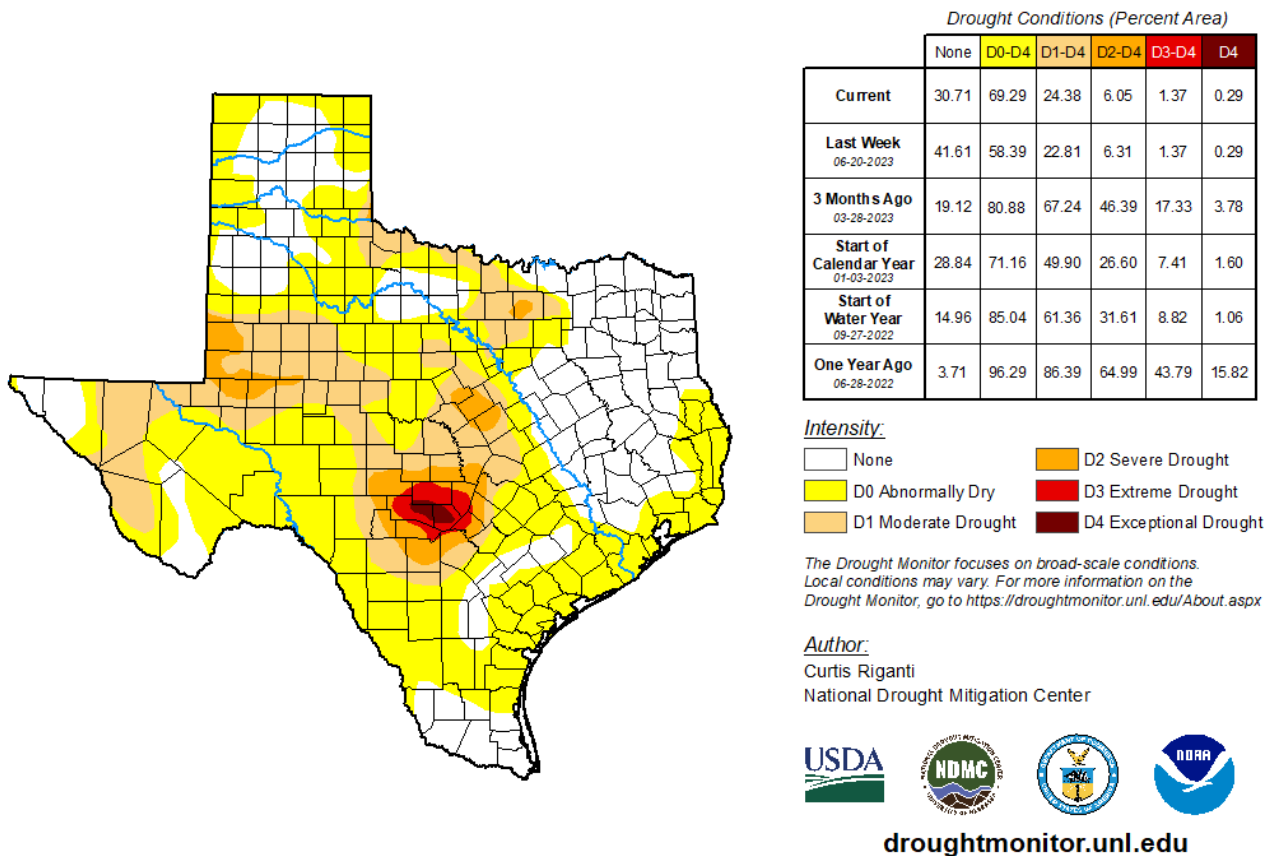


## Seven Day Observed Regional Precipitation, July 2, 2023.



Source: National Weather Service, [www.nws.noaa.gov](http://www.nws.noaa.gov)

## Drought Monitor, Valid June 27, 2023.



Source: National Drought Mitigation Center, a partnership with USDA, U.S. Department of Commerce/NOAA, <http://droughtmonitor.unl.edu>

## Texas Crop Progress and Condition (July 2023)

USDA, National Agricultural Statistics Service, Southern Plains Regional Field Office