



Texas Crop Progress and Condition

Southern Plains Regional Field Office
Post Office Box 70 Austin, Texas 78767
(800) 626-3142 · FAX (855) 270-2725 · www.nass.usda.gov/tx

Issue: TX-CW1723

Weekly Summary for May 8 – May 14

Released: May 15, 2023

Much of the state received from trace amounts to upwards of 2.00 inches of precipitation. Isolated areas in the Blacklands and South Central Texas received up to 6.00 inches. Drought conditions ranged from none to exceptionally dry with the Edwards Plateau and the Plains being the driest. There was an average of 4.6 days suitable for fieldwork.

Small Grains: Precipitation late in the week was a big help to developing crops. In the Blacklands, winter wheat continued to show improvement and in South Texas, some wheat fields were ready for harvest. Winter wheat condition throughout the state was rated poor to fair. Winter wheat headed reached 84 percent, up 1 point from the previous year and down 3 points from normal. Oats headed reached 93 percent, down 3 points from the previous year. Oats condition was rated 34 percent fair.

Row Crops: In the Blacklands and the Coastal Bend, both corn and sorghum will be able to take advantage of the rain and cooler temperatures. Corn emerged reached 75 percent, down 3 points from the previous year. Sorghum planted reached 76 percent, up 3 points from the previous year. In South Central Texas, rice planting is almost complete. Rice emerged reached 84 percent, up 3 points from the previous year. Some portions of corn fields are beginning to stress due to standing water.

Fruit, Vegetable, and Specialty Crops: In South East Texas and South Texas, spring vegetable fields have benefited from the rain. In South Texas, peach harvesting has begun.

Livestock, Range and Pasture: Producers reduced supplemental feeding in South Texas. Range and pasture condition was rated 51 percent very poor to poor. In the areas that received rain, pasture and rangeland benefited and started to show signs of improvement.

Crop Progress

| Stage | Percent of Acreage | | | |
|---------------------|--------------------|---------------|---------------|----------------|
| | Current Week | Previous Week | Previous Year | 5 Year Average |
| Corn | | | | |
| Planted | 81 | 77 | 86 | 84 |
| Emerged | 75 | 67 | 72 | 71 |
| Silking | 20 | 10 | 9 | 13 |
| Cotton | | | | |
| Planted | 30 | 23 | 29 | 32 |
| Peanuts | | | | |
| Planted | 22 | 9 | 25 | 23 |
| Rice | | | | |
| Planted | 90 | 89 | 91 | 91 |
| Emerged | 84 | 79 | 81 | 82 |
| Sorghum | | | | |
| Planted | 76 | 73 | 73 | 77 |
| Headed | 20 | 15 | 13 | 16 |
| Soybeans | | | | |
| Planted | 50 | 39 | 61 | 61 |
| Emerged | 30 | 18 | 34 | 34 |
| Winter Wheat | | | | |
| Headed | 84 | 77 | 85 | 87 |
| Oats | | | | |
| Headed | 93 | 90 | 96 | 97 |
| Harvested | 5 | 0 | 13 | 10 |

Crop Condition

| Crop | Percent of Acreage | | | | | Index ¹ | |
|-------------------|--------------------|------|------|------|-----------|--------------------|------|
| | Excellent | Good | Fair | Poor | Very Poor | 2023 | 2022 |
| Corn | 18 | 54 | 25 | 3 | 0 | 84 | 59 |
| Rice | 6 | 85 | 9 | 0 | 0 | 88 | NA |
| Wheat | 2 | 18 | 28 | 30 | 22 | 44 | 20 |
| Oats | 4 | 24 | 34 | 24 | 14 | 53 | 23 |
| Range and Pasture | 6 | 21 | 22 | 30 | 21 | 47 | 28 |

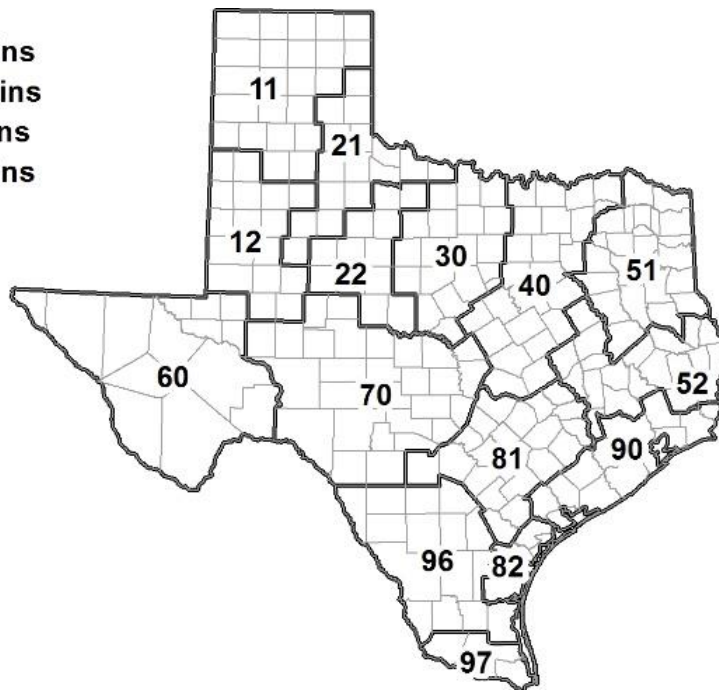
¹ The formula for the condition index is $I = (5V + 25P + 60F + 90G + 110E)/100$ where I = crop condition index and V, P, F, G, E = percentage of crop rated very poor, poor, fair, good, excellent.

Soil Moisture and Days Suitable by District

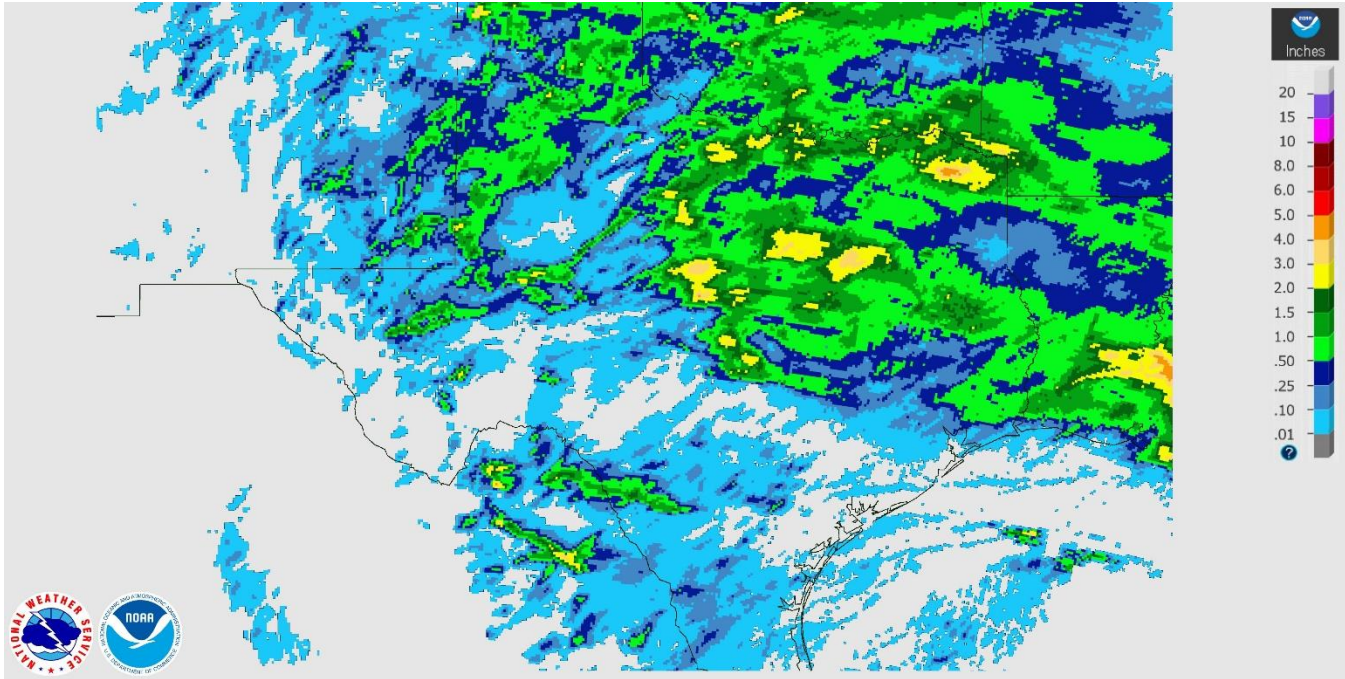
| District | Subsoil Moisture Condition by District | | | | Topsoil Moisture Condition by District | | | | Days Suitable for Fieldwork |
|----------|--|-------|----------|---------|--|-------|----------|---------|-----------------------------|
| | Percentage of Acreage | | | | Percentage of Acreage | | | | |
| | Very Short | Short | Adequate | Surplus | Very Short | Short | Adequate | Surplus | |
| 11 | 37 | 38 | 21 | 4 | 17 | 43 | 37 | 3 | 5.4 |
| 12 | 75 | 25 | 0 | 0 | 61 | 25 | 8 | 6 | 6.0 |
| 21 | 12 | 37 | 46 | 5 | 17 | 32 | 44 | 7 | 5.1 |
| 22 | 21 | 50 | 24 | 5 | 11 | 51 | 30 | 8 | 4.3 |
| 30 | 4 | 36 | 60 | 0 | 2 | 23 | 58 | 17 | 5.2 |
| 40 | 5 | 9 | 61 | 25 | 3 | 4 | 46 | 47 | 3.0 |
| 51 | 1 | 2 | 46 | 51 | 1 | 2 | 41 | 56 | 3.8 |
| 52 | 0 | 2 | 62 | 36 | 0 | 1 | 64 | 35 | 2.4 |
| 60 | 15 | 10 | 75 | 0 | 15 | 10 | 75 | 0 | 6.0 |
| 70 | 41 | 44 | 14 | 1 | 49 | 25 | 24 | 2 | 6.3 |
| 81 | 1 | 22 | 63 | 14 | 0 | 12 | 71 | 17 | 4.0 |
| 82 | 6 | 4 | 49 | 41 | 7 | 3 | 49 | 41 | 3.3 |
| 90 | 0 | 12 | 38 | 50 | 0 | 1 | 34 | 65 | 1.6 |
| 96 | 9 | 24 | 66 | 1 | 6 | 22 | 67 | 5 | 5.1 |
| 97 | 2 | 8 | 84 | 6 | 2 | 8 | 85 | 5 | 3.8 |
| State | 27 | 26 | 35 | 12 | 19 | 24 | 39 | 18 | 4.6 |

Texas Agricultural Districts

- 11 Northern High Plains
- 12 Southern High Plains
- 21 Northern Low Plains
- 22 Southern Low Plains
- 30 Cross Timbers
- 40 Blacklands
- 51 North East
- 52 South East
- 60 Trans-Pecos
- 70 Edwards Plateau
- 81 South Central
- 82 Coastal Bend
- 90 Upper Coast
- 96 South
- 97 Lower Valley

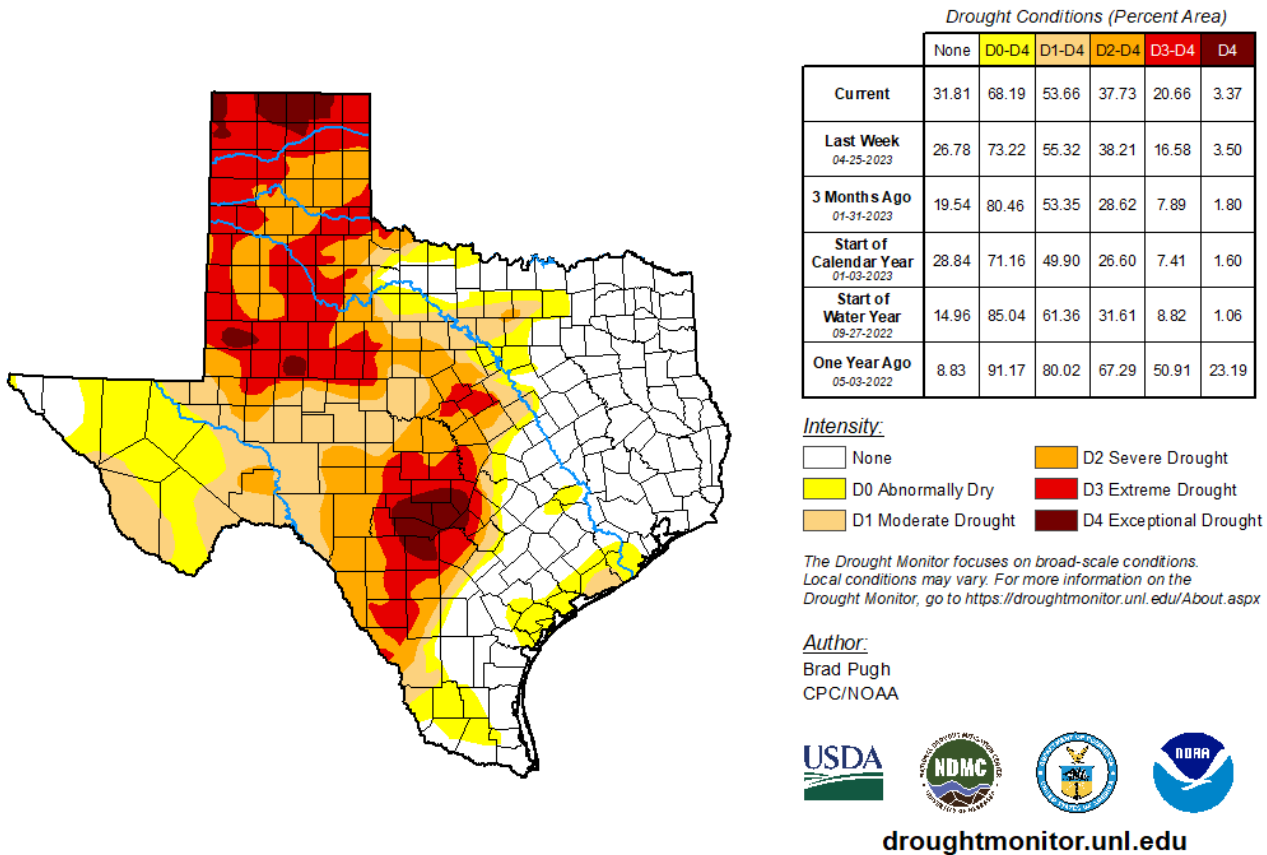


Seven Day Observed Regional Precipitation, May 14, 2023.



Source: National Weather Service, www.nws.noaa.gov

Drought Monitor, Valid May 9, 2023.



Source: National Drought Mitigation Center, a partnership with USDA, U.S. Department of Commerce/NOAA, <http://droughtmonitor.unl.edu>