



Texas Crop Progress and Condition

Southern Plains Regional Field Office
Post Office Box 70 Austin, Texas 78767
(800) 626-3142 · FAX (855) 270-2725 · www.nass.usda.gov/tx

Issue: TX-CW1523

Weekly Summary for April 24 - April 30

Released: May 1, 2023

While not widespread, some Texas producers received up to five inches of precipitation last week. Areas of the Blacklands, East Texas, South Central Texas, the Upper Coast, and South Texas received the highest rainfall averages. Drought conditions ranged from none to exceptionally dry, with isolated parts of the High Plains, the Low Plains, and the Edwards Plateau being the driest. There was an average of 4.5 days suitable for fieldwork.

Small Grains: In some areas of the High and Low Plains, producers have continued to cut their wheat for hay and silage. In the Blacklands, winter wheat continued to show improvement. Winter wheat condition throughout the state was rated poor to very poor. Winter wheat headed reached 69 percent, 6 points up from the previous year. Oats headed reached 80 percent, 3 points down from the previous year. Oats condition was rated fair to poor.

Row Crops: In the Blacklands and the Coastal Bend, both corn and sorghum continued to show progress. Corn emerged reached 65 percent, up 3 points from the previous year. Sorghum planted reached 69 percent, 3 points up from the previous year. In the Blacklands, cotton planting continued to be slow due to precipitation, while in the Edwards Plateau, planting prep continued. Cotton planted reached 20 percent, the same as the previous year. Rice emerged reached 69 percent, up 2 points from the previous year.

Fruit, Vegetable, and Specialty Crops: Spring vegetables were progressing in South East Texas.

Livestock, Range and Pasture: Supplemental feeding continued throughout the state. Range and pasture condition was rated very poor to poor. In the areas that received rain, pasture and rangeland benefited and started to show signs of improvement.

Crop Progress

Stage	Percent of Acreage			
	Current Week	Previous Week	Previous Year	5 Year Average
Corn				
Planted	74	72	73	69
Emerged	65	60	62	56
Cotton				
Planted	20	18	20	17
Rice				
Planted	83	74	81	83
Emerged	69	58	67	70
Sorghum				
Planted	69	63	66	69
Winter Wheat				
Headed	69	53	63	68
Oats				
Headed	80	73	83	84

Crop Condition

Crop	Percent of Acreage					Index ¹	
	Excellent	Good	Fair	Poor	Very Poor	2023	2022
Corn	22	50	14	13	1	81	65
Rice	5	71	21	3	0	83	NA
Wheat	2	15	26	31	26	40	24
Oats	2	18	30	29	21	45	22
Range and Pasture	6	18	25	24	27	45	28

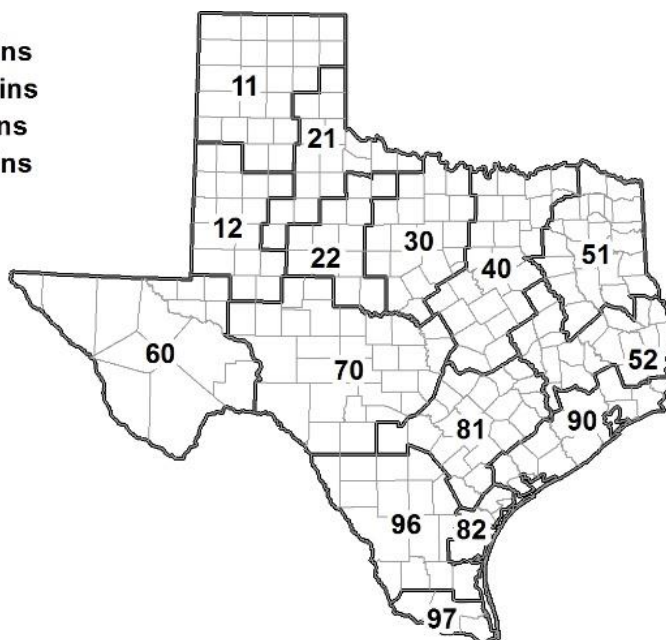
¹ The formula for the condition index is $I = (5V + 25P + 60F + 90G + 110E)/100$ where I = crop condition index and V, P, F, G, E = percentage of crop rated very poor, poor, fair, good, excellent. (NA) Not available.

Soil Moisture and Days Suitable by District

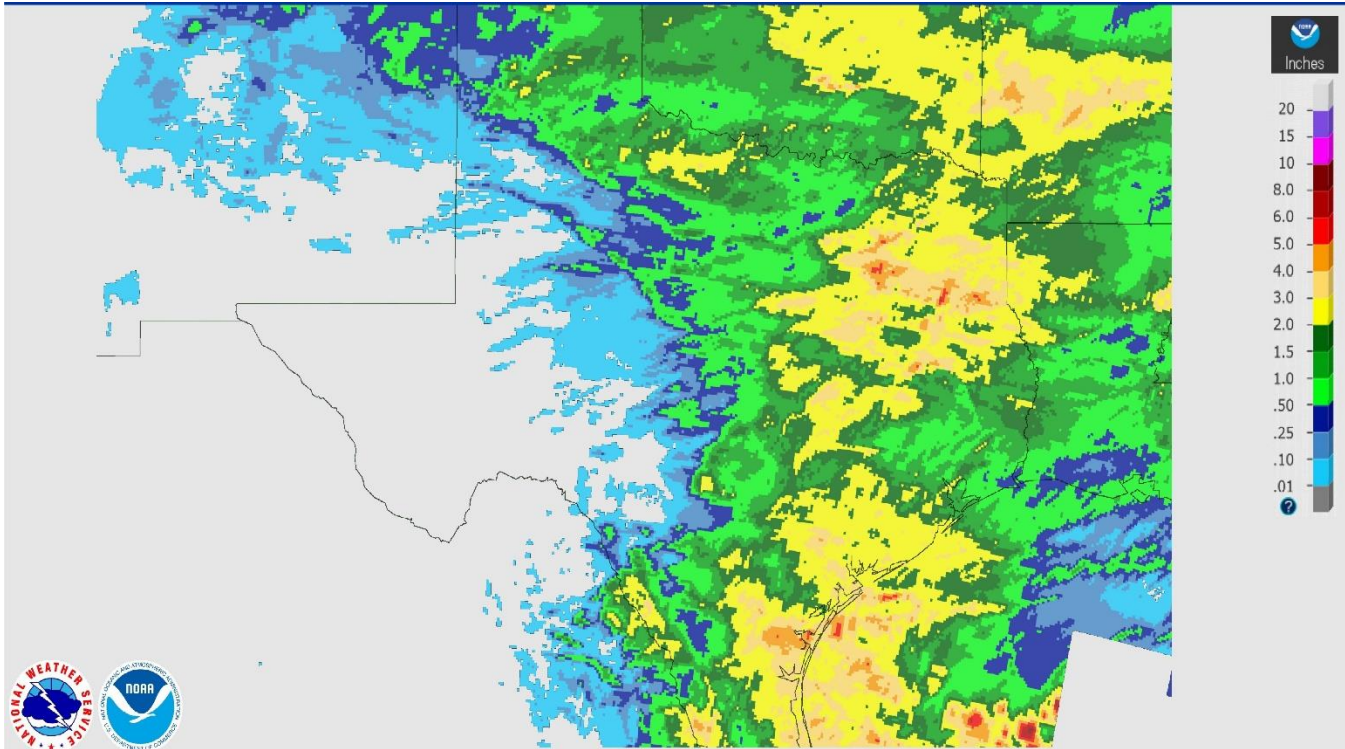
District	Subsoil Moisture Condition by District				Topsoil Moisture Condition by District				Days Suitable for Fieldwork
	Percentage of Acreage				Percentage of Acreage				
	Very Short	Short	Adequate	Surplus	Very Short	Short	Adequate	Surplus	
11	62	21	17	0	55	25	20	0	4.0
12	76	24	0	0	69	31	0	0	5.8
21	28	28	44	0	37	37	26	0	5.2
22	43	36	21	0	30	52	16	2	6.2
30	23	32	45	0	9	33	52	6	5.5
40	10	20	56	14	4	8	57	31	2.4
51	2	2	54	42	1	3	46	50	4.7
52	0	5	73	22	1	4	67	28	4.9
60	29	32	39	0	30	32	38	0	5.9
70	38	47	10	5	55	24	18	3	6.9
81	0	22	74	4	0	11	84	5	4.1
82	5	5	60	30	4	7	49	40	1.8
90	0	44	19	37	0	4	50	46	1.1
96	17	17	62	4	11	17	66	6	4.6
97	2	8	84	6	2	11	80	7	3.7
State	37	24	32	7	32	23	34	11	4.5

Texas Agricultural Districts

- 11 Northern High Plains
- 12 Southern High Plains
- 21 Northern Low Plains
- 22 Southern Low Plains
- 30 Cross Timbers
- 40 Blacklands
- 51 North East
- 52 South East
- 60 Trans-Pecos
- 70 Edwards Plateau
- 81 South Central
- 82 Coastal Bend
- 90 Upper Coast
- 96 South
- 97 Lower Valley

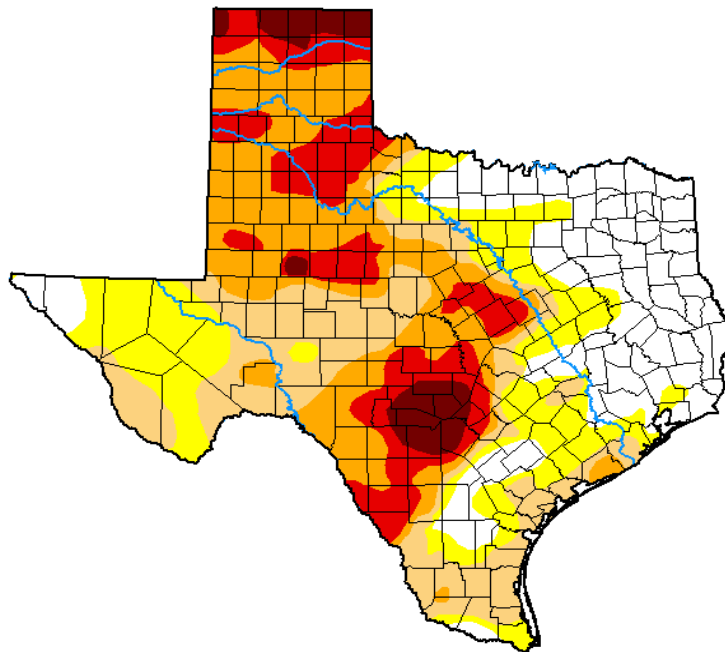


Seven Day Observed Regional Precipitation, April 23, 2023.



Source: National Weather Service, www.nws.noaa.gov

Drought Monitor, Valid April 18, 2023.



Drought Conditions (Percent Area)

	None	D0-D4	D1-D4	D2-D4	D3-D4	D4
Current	22.37	77.63	58.15	38.98	17.67	4.14
Last Week 04-11-2023	22.13	77.87	58.63	37.64	16.24	4.07
3 Months Ago 01-17-2023	22.34	77.66	54.68	29.62	7.70	1.80
Start of Calendar Year 01-03-2023	28.84	71.16	49.90	26.60	7.41	1.60
Start of Water Year 09-27-2022	14.96	85.04	61.36	31.61	8.82	1.06
One Year Ago 04-19-2022	3.87	96.13	87.38	72.46	53.54	15.91

Intensity:

- None
- D0 Abnormally Dry
- D1 Moderate Drought
- D2 Severe Drought
- D3 Extreme Drought
- D4 Exceptional Drought

The Drought Monitor focuses on broad-scale conditions. Local conditions may vary. For more information on the Drought Monitor, go to <https://droughtmonitor.unl.edu/About.aspx>

Author:

Richard Tinker
CPC/NOAA/NWS/NCEP



droughtmonitor.unl.edu

Source: National Drought Mitigation Center, a partnership with USDA, U.S. Department of Commerce/NOAA, <http://droughtmonitor.unl.edu>