



Texas Crop Progress and Condition

Southern Plains Regional Field Office
Post Office Box 70 Austin, Texas 78767
(800) 626-3142 · FAX (855) 270-2725 · www.nass.usda.gov/tx

Issue: TX-CW1323

Weekly Summary for April 10 - April 16

Released: April 17, 2023

Most of the state received from trace amounts to one inch of precipitation last week. Areas of South East Texas, the Plains, and the Upper Coast received between 1 to 3 inches of rain. Drought conditions ranged from none to exceptionally dry, with isolated parts of the Edwards Plateau, South Central Texas, and the Plains being the driest. There was an average of 6.1 days suitable for fieldwork.

Small Grains: In the Plains and the Crosstimbers, producers noticed signs of stress in wheat. Some have begun to cut for hay, while others were allowing cattle to continue grazing. In the Blacklands, winter wheat had shown improvement. Winter wheat in some areas of the state continued to mature as more yield assessments were being made. Winter wheat condition throughout the state was rated fair to poor. Winter wheat headed reached 35 percent, 6 points up from the previous year. Oats headed reached 55 percent, same as the previous year. Oats condition was rated fair to very poor.

Row Crops: In the Edwards Plateau and South Central Texas, corn reported to be emerging nicely. Corn emerged reached 56 percent, up 8 points from the previous year. Sorghum planted reached 52 percent, down 4 points from the previous year. Cotton planted reached 13 percent, down 2 points from the previous year. Cotton growers were in great need of rain in order to have any hope of a cotton crop. In the Blacklands, cotton producers continued to wait for dryer soil conditions to plant, while in South Central Texas planting is underway. Rice emerged reached 41 percent, same as the previous year.

Fruit, Vegetable, and Specialty Crops: In South East Texas wet conditions have caused disease in some vegetable fields.

Livestock, Range and Pasture: Supplemental feeding continued throughout the state. Sporadic rains were welcomed in some areas of the state. While some areas were seeing improved green pastures, other areas remained dry as producers hoped for more rainfall. Range and pasture condition was rated poor to very poor.

Crop Progress

Stage	Percent of Acreage			
	Current Week	Previous Week	Previous Year	5 Year Average
Corn				
Planted	65	61	64	61
Emerged	56	40	48	46
Cotton				
Planted	13	11	15	14
Rice				
Planted	55	49	71	71
Emerged	41	27	41	51
Sorghum				
Planted	52	48	56	58
Winter Wheat				
Headed	35	31	29	37
Oats				
Headed	55	41	55	54

Crop Condition

Crop	Percent of Acreage					Index ¹	
	Excellent	Good	Fair	Poor	Very Poor	2023	2022
Wheat	1	15	32	28	24	42	22
Oats	3	15	29	25	28	42	21
Range and Pasture	3	12	28	29	28	40	26

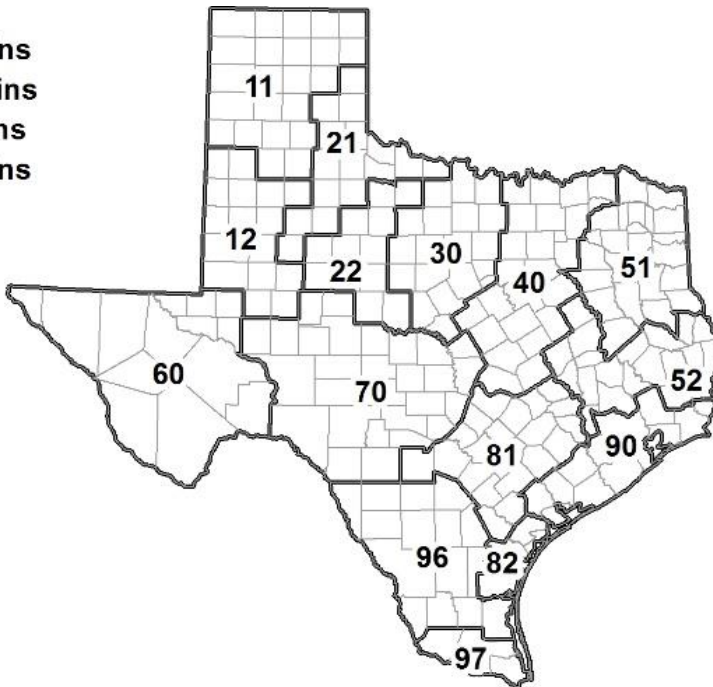
¹ The formula for the condition index is $I = (5V + 25P + 60F + 90G + 110E)/100$ where I = crop condition index and V, P, F, G, E = percentage of crop rated very poor, poor, fair, good, excellent.

Soil Moisture and Days Suitable by District

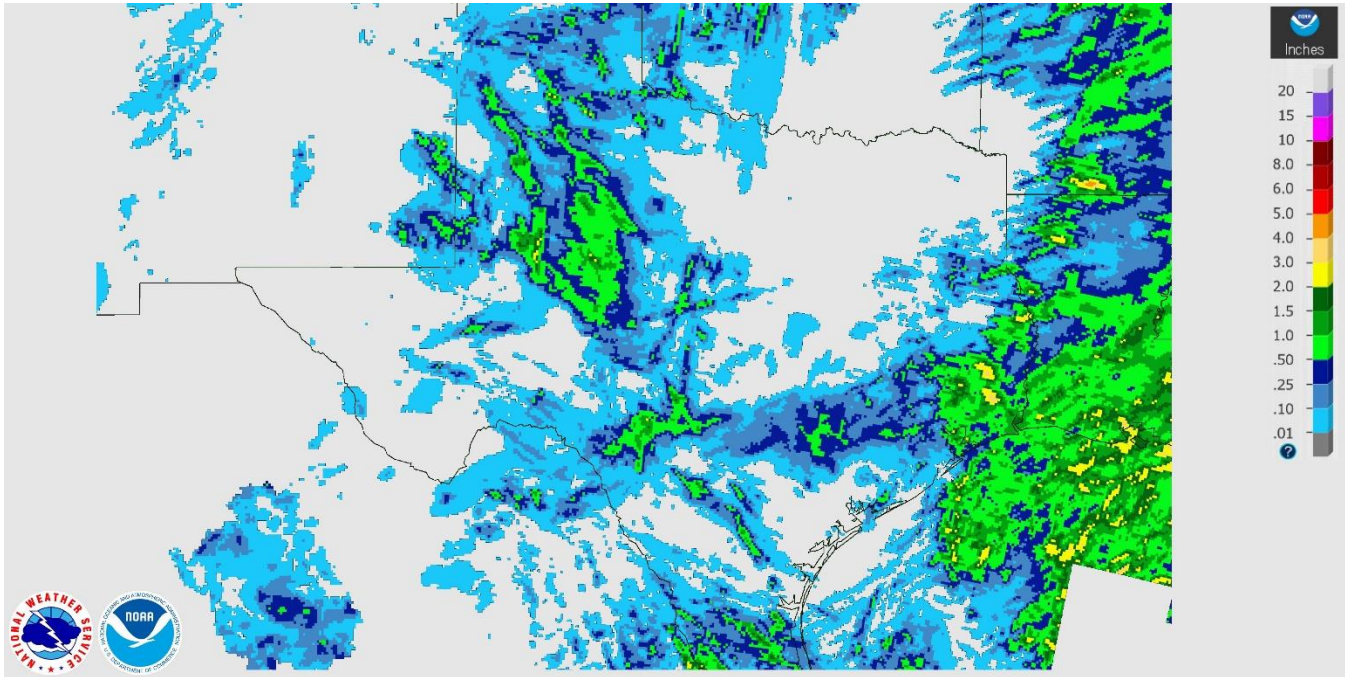
District	Subsoil Moisture Condition by District				Topsoil Moisture Condition by District				Days Suitable for Fieldwork
	Percentage of Acreage				Percentage of Acreage				
	Very Short	Short	Adequate	Surplus	Very Short	Short	Adequate	Surplus	
11	54	40	6	0	62	36	2	0	6.8
12	72	28	0	0	56	42	2	0	6.8
21	27	51	22	0	48	42	10	0	6.7
22	42	56	2	0	32	68	0	0	6.1
30	19	41	37	3	18	47	35	0	6.8
40	13	25	46	16	11	20	51	18	5.2
51	0	4	60	36	0	4	51	45	6.7
52	0	9	70	21	1	9	71	19	5.1
60	28	44	28	0	32	47	21	0	6.2
70	27	54	18	1	41	43	15	1	7.0
81	2	38	60	0	0	33	63	4	6.2
82	11	11	70	8	11	10	71	8	1.5
90	2	16	45	37	0	15	51	34	4.9
96	27	29	44	0	16	33	50	1	4.7
97	2	23	50	25	33	11	56	0	4.8
State	34	34	25	7	34	35	24	7	6.1

Texas Agricultural Districts

- 11 Northern High Plains
- 12 Southern High Plains
- 21 Northern Low Plains
- 22 Southern Low Plains
- 30 Cross Timbers
- 40 Blacklands
- 51 North East
- 52 South East
- 60 Trans-Pecos
- 70 Edwards Plateau
- 81 South Central
- 82 Coastal Bend
- 90 Upper Coast
- 96 South
- 97 Lower Valley

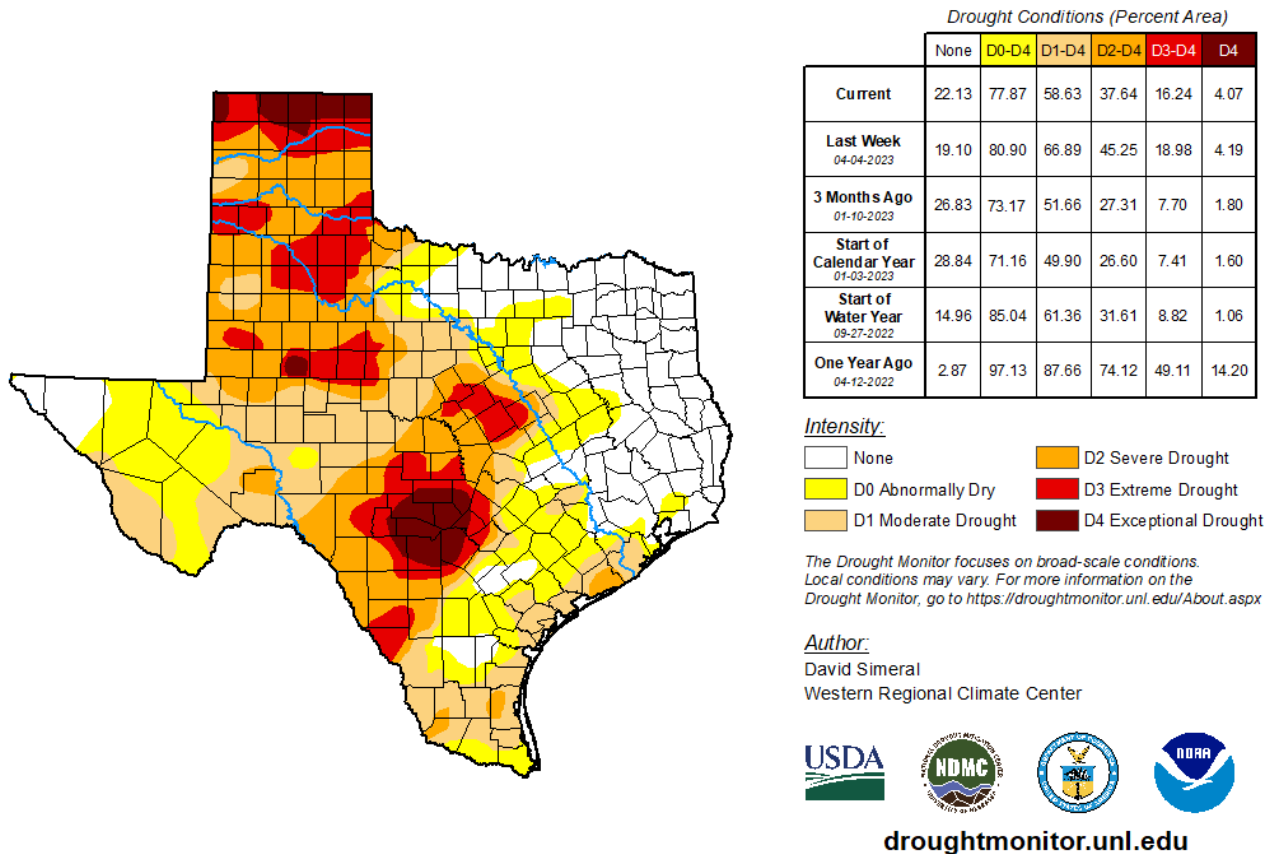


Seven Day Observed Regional Precipitation, April 16, 2023.



Source: National Weather Service, www.nws.noaa.gov

Drought Monitor, Valid April 11, 2023.



Source: National Drought Mitigation Center, a partnership with USDA, U.S. Department of Commerce/NOAA, <http://droughtmonitor.unl.edu>