



# Texas Crop Progress and Condition

Southern Plains Regional Field Office  
Post Office Box 70 Austin, Texas 78767  
(800) 626-3142 · FAX (855) 270-2725 · www.nass.usda.gov/tx

**Issue: TX-CW1023**

**Weekly Summary for March 20 - March 26**

**Released: March 27, 2023**

Most of the state received from trace amounts to 2 inches of precipitation last week, with areas of The Plains and the Trans Pecos receiving little to no rain. Drought conditions ranged from none to exceptionally dry, with isolated parts of the Edwards Plateau, South Central Texas, and the Northern High Plains being the driest. There was an average of 6.1 days suitable for fieldwork.

**Small Grains:** In the Plains irrigated wheat has improved with watering and increased temperatures, while non-irrigated fields continued to struggle. Winter wheat condition throughout the state was rated fair to poor. Winter wheat headed reached 25 percent, 4 points up from the previous year. Oats headed reached 32 percent, up 9 points from the previous year. Oats condition was rated fair to poor.

**Row Crops:** Corn planting continued to progress across the state. Corn planted reached 52 percent, 2 percent above the previous year. In the Crosstimbers and the Blacklands, light frost was experienced. In the Lower Valley, there was evidence of stress due to lack of moisture. Sorghum planted has reached 38 percent, same as the previous year. Rice planted reached 21 percent, one point above the previous year.

**Fruit, Vegetable, and Specialty Crops:** Citrus, sugarcane, onion, and vegetables continued to harvest in South Texas. In the Crosstimbers, pecan trees have started to bud out.

**Livestock, Range and Pasture:** Supplemental feeding continued throughout the state. High winds and low humidity continued to reduce soil moisture levels in the Plains. Range and Pasture condition was rated poor to very poor.

### Crop Progress

Stage	Percent of Acreage			
	Current Week	Previous Week	Previous Year	5 Year Average
<b>Corn</b>				
Planted	52	40	50	45
<b>Rice</b>				
Planted	22	(NA)	21	29
<b>Sorghum</b>				
Planted	38	28	38	38
<b>Winter Wheat</b>				
Headed	25	22	21	16
<b>Oats</b>				
Headed	32	28	23	17

(NA) Not available.

### Crop Condition

Crop	Percent of Acreage					Index <sup>1</sup>	
	Excellent	Good	Fair	Poor	Very Poor	2023	2022
Wheat	3	15	34	25	23	45	49
Oats	4	16	32	25	23	45	43
Range and Pasture	2	8	22	35	33	33	37

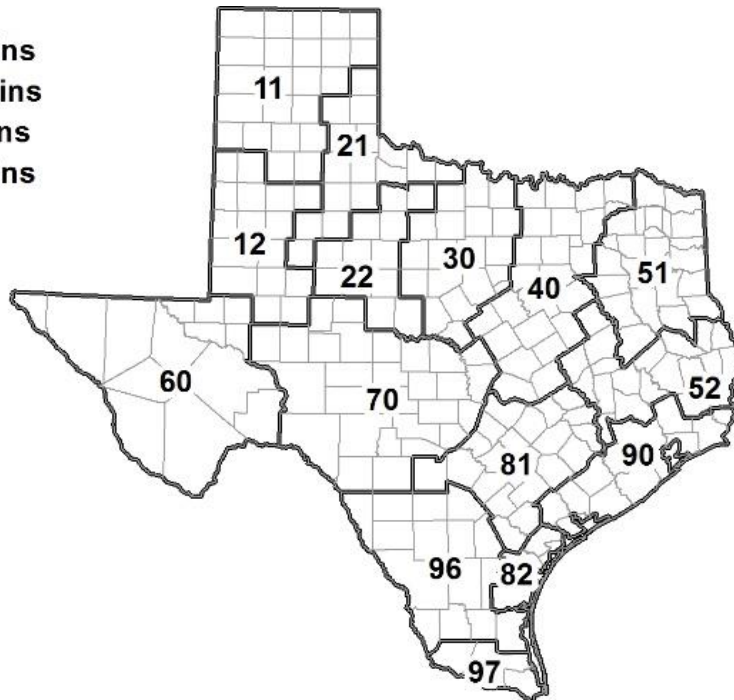
<sup>1</sup> The formula for the condition index is  $I = (5V + 25P + 60F + 90G + 110E)/100$  where I = crop condition index and V, P, F, G, E = percentage of crop rated very poor, poor, fair, good, excellent.

### Soil Moisture and Days Suitable by District

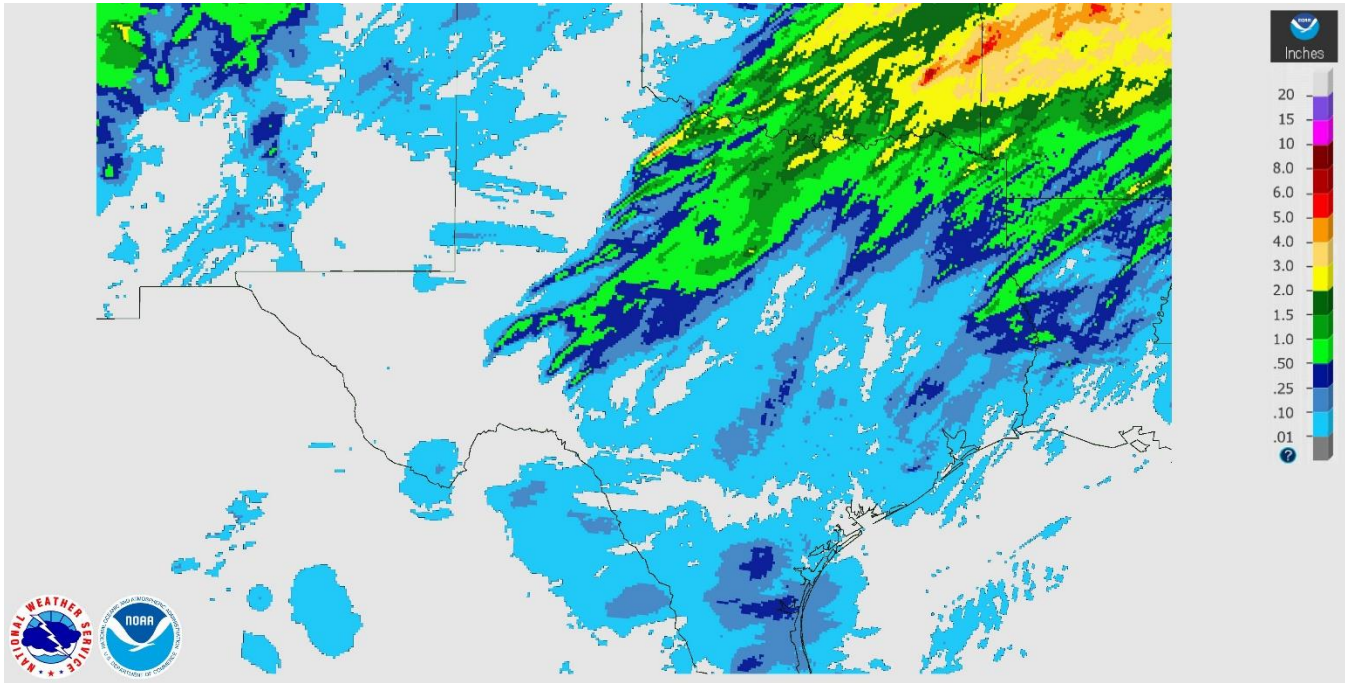
District	Subsoil Moisture Condition by District				Topsoil Moisture Condition by District				Days Suitable for Fieldwork
	Percentage of Acreage				Percentage of Acreage				
	Very Short	Short	Adequate	Surplus	Very Short	Short	Adequate	Surplus	
11	58	30	12	0	62	34	4	0	6.9
12	60	40	0	0	87	12	1	0	6.5
21	16	57	27	0	35	45	20	0	7.0
22	30	60	10	0	15	54	29	2	5.1
30	5	56	39	0	4	38	51	7	5.9
40	12	19	52	17	7	23	53	17	5.6
51	3	3	69	25	3	5	64	28	6.2
52	0	15	80	5	0	15	81	4	5.9
60	23	63	14	0	23	63	14	0	6.5
70	26	55	19	0	38	46	16	0	6.2
81	16	56	27	1	15	56	28	1	5.6
82	26	53	21	0	57	28	15	0	6.2
90	3	47	49	1	4	28	66	2	4.9
96	24	70	6	0	31	58	11	0	6.2
97	16	32	52	0	38	37	25	0	5.4
State	32	40	25	3	39	32	25	4	6.1

### Texas Agricultural Districts

- 11 Northern High Plains
- 12 Southern High Plains
- 21 Northern Low Plains
- 22 Southern Low Plains
- 30 Cross Timbers
- 40 Blacklands
- 51 North East
- 52 South East
- 60 Trans-Pecos
- 70 Edwards Plateau
- 81 South Central
- 82 Coastal Bend
- 90 Upper Coast
- 96 South
- 97 Lower Valley

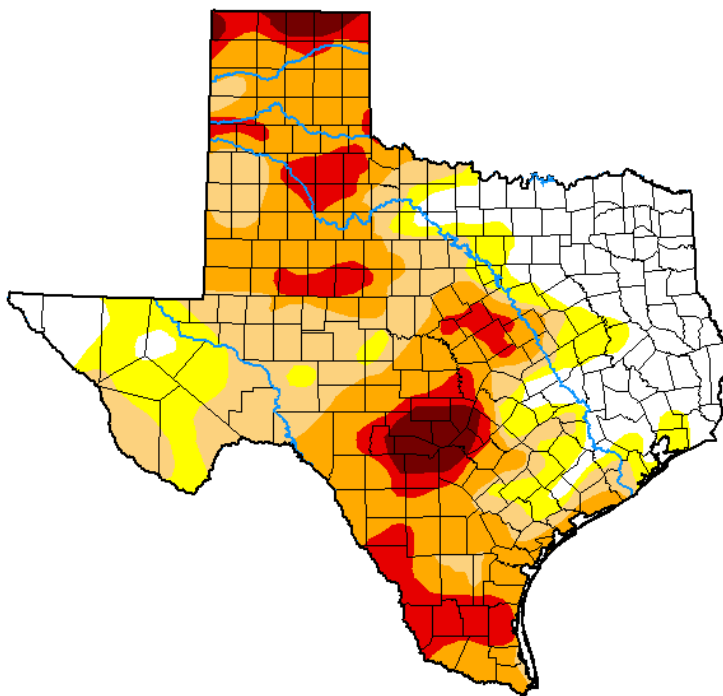


**Seven Day Observed Regional Precipitation, March 26, 2023.**



Source: National Weather Service, [www.nws.noaa.gov](http://www.nws.noaa.gov)

**Drought Monitor, Valid March 21, 2023.**



*Drought Conditions (Percent Area)*

	None	D0-D4	D1-D4	D2-D4	D3-D4	D4
<b>Current</b>	21.63	78.37	64.18	43.53	14.21	3.15
<b>Last Week</b> <i>03-14-2023</i>	22.03	77.97	64.71	41.59	14.21	1.84
<b>3 Months Ago</b> <i>12-20-2022</i>	27.57	72.43	48.59	25.88	7.13	1.24
<b>Start of Calendar Year</b> <i>01-03-2023</i>	28.84	71.16	49.90	26.60	7.41	1.60
<b>Start of Water Year</b> <i>09-27-2022</i>	14.96	85.04	61.36	31.61	8.82	1.06
<b>One Year Ago</b> <i>03-22-2022</i>	4.28	95.72	88.24	71.31	40.38	6.20

Intensity:

- None
- D0 Abnormally Dry
- D1 Moderate Drought
- D2 Severe Drought
- D3 Extreme Drought
- D4 Exceptional Drought

*The Drought Monitor focuses on broad-scale conditions. Local conditions may vary. For more information on the Drought Monitor, go to <https://droughtmonitor.unl.edu/About.aspx>*

Author:

Curtis Riganti  
National Drought Mitigation Center



[droughtmonitor.unl.edu](http://droughtmonitor.unl.edu)

Source: National Drought Mitigation Center,

a partnership with USDA, U.S. Department of Commerce/NOAA, <http://droughtmonitor.unl.edu>