



Texas Crop Progress and Condition

Southern Plains Regional Field Office
Post Office Box 70 Austin, Texas 78767
(800) 626-3142 · FAX (855) 270-2725 · www.nass.usda.gov/tx

Issue: TX-CW0923

Weekly Summary for March 13 - March 19

Released: March 20, 2023

Most of the state received from trace amounts to 2 inches of precipitation last week, with areas of East Texas receiving up to 3 inches. Drought conditions ranged from none to exceptionally dry, with isolated parts of the Edwards Plateau, South Central Texas, and the Northern High Plains being the driest. There was an average of 5.8 days suitable for fieldwork.

Small Grains: Winter wheat condition throughout the state was rated fair to poor. Winter wheat headed reached 22 percent, 4 points up from the previous year. Oats headed reached 28 percent, up 8 points from the previous year. Oats condition was rated fair to very poor.

Row Crops: Corn planted reached 40 percent, same as the previous year. Across the state producers had begun or were preparing to plant Sorghum. Sorghum planted has reached 28 percent, same as the previous year. Rice planting continued to progress in the Upper Coast. Cool weather with lack of moisture delayed Cotton planting in areas of the Lower Valley and South Texas.

Fruit, Vegetable, and Specialty Crops: Citrus, sugarcane, and vegetables continued to harvest.

Livestock, Range and Pasture: Supplemental feeding continued throughout the state. Ranchers in the Crosstimbers noticed growth in their pastures with adequate moisture. Range and pasture condition was rated poor to very poor.

Crop Progress

Stage	Percent of Acreage			
	Current Week	Previous Week	Previous Year	5 Year Average
Corn				
Planted	40	30	40	35
Sorghum				
Planted	28	20	28	28
Winter Wheat				
Headed	22	21	18	12
Oats				
Headed	28	25	20	13

Crop Condition

Crop	Percent of Acreage					Index ¹	
	Excellent	Good	Fair	Poor	Very Poor	2023	2022
Wheat	4	19	33	26	18	49	44
Oats	4	14	30	25	27	43	46
Range and Pasture	3	9	27	31	30	37	33

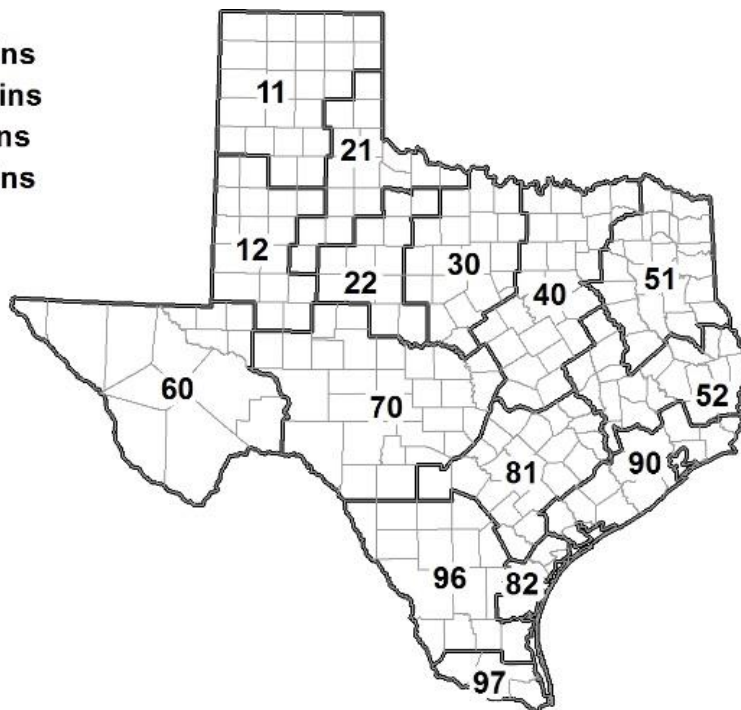
¹ The formula for the condition index is $I = (5V + 25P + 60F + 90G + 110E)/100$ where I = crop condition index and V, P, F, G, E = percentage of crop rated very poor, poor, fair, good, excellent.

Soil Moisture and Days Suitable by District

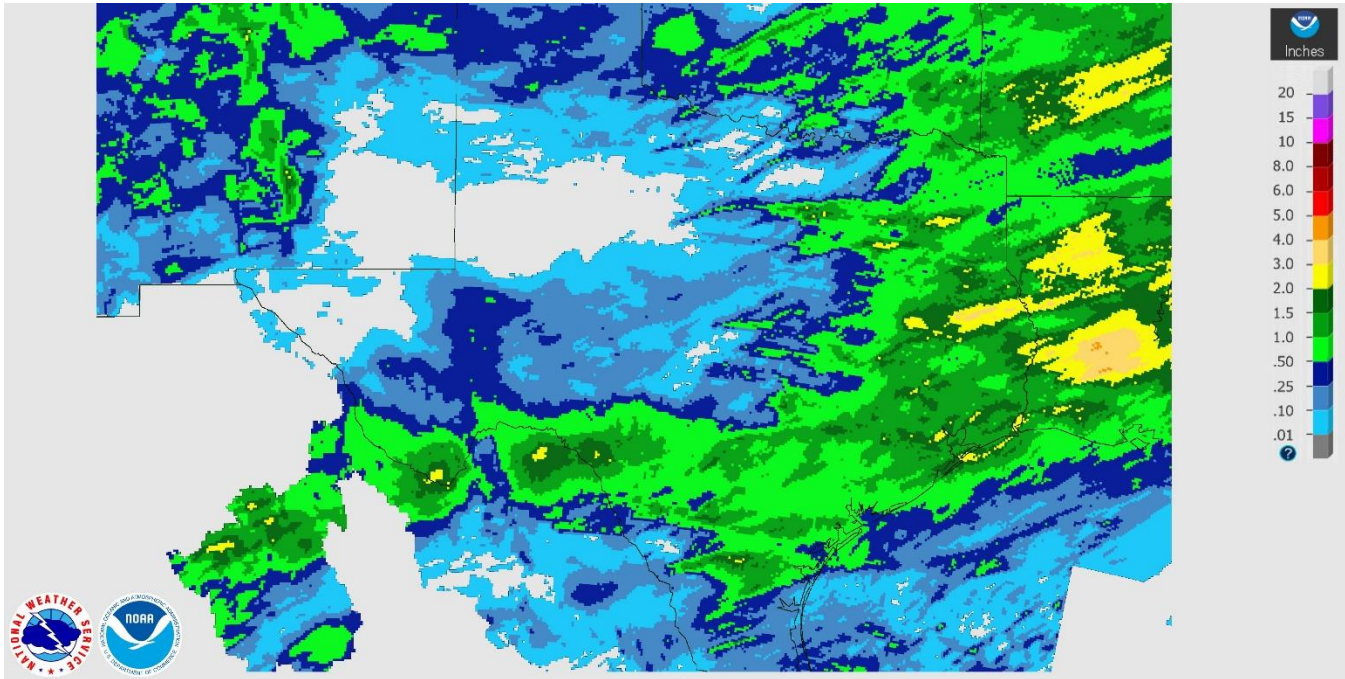
District	Subsoil Moisture Condition by District				Topsoil Moisture Condition by District				Days Suitable for Fieldwork
	Percentage of Acreage				Percentage of Acreage				
	Very Short	Short	Adequate	Surplus	Very Short	Short	Adequate	Surplus	
11	56	32	12	0	59	32	9	0	5.8
12	60	40	0	0	96	3	1	0	6.8
21	22	47	31	0	30	44	26	0	5.6
22	39	54	7	0	26	43	31	0	5.2
30	6	46	47	1	7	40	45	8	5.9
40	11	21	49	19	6	19	53	22	5.0
51	2	3	53	42	3	5	50	42	5.8
52	1	20	75	4	1	19	78	2	5.9
60	45	52	3	0	48	52	0	0	6.4
70	36	46	18	0	36	60	4	0	6.4
81	6	73	21	0	9	63	28	0	5.4
82	22	31	47	0	22	39	39	0	5.4
90	0	51	47	2	1	27	71	1	5.1
96	38	55	7	0	44	43	13	0	6.5
97	14	36	50	0	31	43	26	0	4.8
State	33	39	24	4	40	29	26	5	5.8

Texas Agricultural Districts

- 11 Northern High Plains
- 12 Southern High Plains
- 21 Northern Low Plains
- 22 Southern Low Plains
- 30 Cross Timbers
- 40 Blacklands
- 51 North East
- 52 South East
- 60 Trans-Pecos
- 70 Edwards Plateau
- 81 South Central
- 82 Coastal Bend
- 90 Upper Coast
- 96 South
- 97 Lower Valley

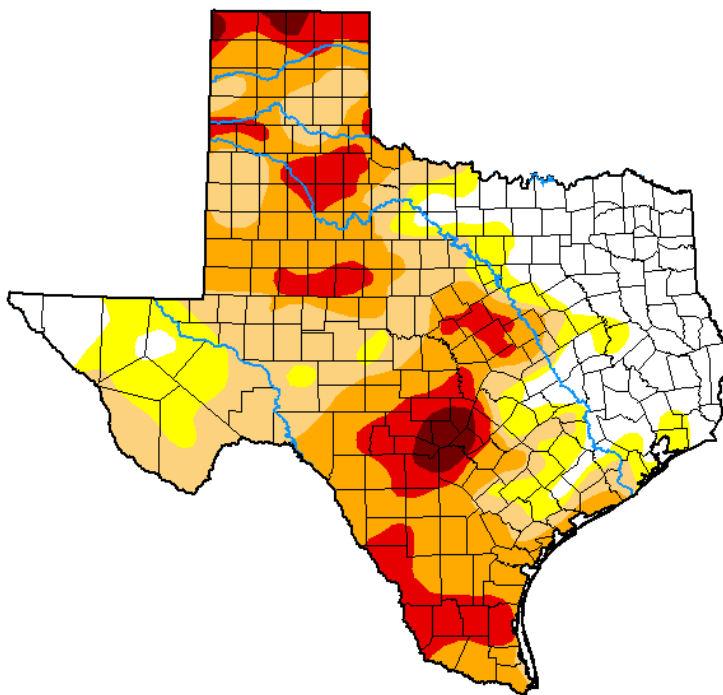


Seven Day Observed Regional Precipitation, March 19, 2023.



Source: National Weather Service, www.nws.noaa.gov

Drought Monitor, Valid March 14, 2023.



Drought Conditions (Percent Area)

	None	D0-D4	D1-D4	D2-D4	D3-D4	D4
Current	22.03	77.97	64.71	41.59	14.21	1.84
Last Week <i>03-07-2023</i>	20.52	79.48	64.01	35.54	13.41	1.84
3 Months Ago <i>12-13-2022</i>	24.95	75.05	52.09	26.55	7.01	1.39
Start of Calendar Year <i>01-03-2023</i>	28.84	71.16	49.90	26.60	7.41	1.60
Start of Water Year <i>09-27-2022</i>	14.96	85.04	61.36	31.61	8.82	1.06
One Year Ago <i>03-15-2022</i>	3.69	96.31	91.22	70.13	41.20	8.63

Intensity:

- None
- D0 Abnormally Dry
- D1 Moderate Drought
- D2 Severe Drought
- D3 Extreme Drought
- D4 Exceptional Drought

The Drought Monitor focuses on broad-scale conditions. Local conditions may vary. For more information on the Drought Monitor, go to <https://droughtmonitor.unl.edu/About.aspx>

Author:

Brad Rippey
U.S. Department of Agriculture



droughtmonitor.unl.edu

Source: National Drought Mitigation Center, a partnership with USDA, U.S. Department of Commerce/NOAA, <http://droughtmonitor.unl.edu>