



Texas Crop Progress and Condition

Southern Plains Regional Field Office
Post Office Box 70 Austin, Texas 78767
(800) 626-3142 · FAX (855) 270-2725 · www.nass.usda.gov/tx

Issue: TX-CW0823

Weekly Summary for March 6 - March 12

Released: March 13, 2023

Most of the state received little to no precipitation last week, with areas of the Blacklands, the Crosstimbers, and North East Texas receiving from 1 to 6 inches. Drought conditions ranged from none to exceptionally dry, with isolated parts of the Edwards Plateau, South Central Texas, and the Northern High Plains being the driest. There was an average of 5.8 days suitable for fieldwork.

Small Grains: Winter wheat condition throughout the state was rated fair to poor. Winter wheat headed reached 21 percent, 4 points up from the previous year. Oats headed reached 25 percent, up 8 points from the previous year. Oats condition was rated fair to poor.

Row Crops: Corn and sorghum planting progressed in South Texas, the Upper Coast, and the Coastal Bend. Weather conditions delayed planting in some areas of the Blacklands and North East Texas. Corn planted reached 30 percent, up 4 points from the previous year. Sorghum planted has reached 20 percent, up 3 points from the previous year. Rice planting in the Upper Coast is underway. Cotton planting in areas of South Texas has been delayed in hopes of more moisture.

Fruit, Vegetable and Specialty Crops: In the Lower Valley, cool- season vegetables continue to be harvested

Livestock, Range and Pasture: Producers continued using supplemental feeding across much of the state. Ranchers in the Crosstimbers noticed growth in their pastures with adequate moisture. Range and pasture condition was rated poor to very poor.

Crop Progress

Stage	Percent of Acreage			
	Current Week	Previous Week	Previous Year	5 Year Average
Corn				
Planted	30	20	26	24
Sorghum				
Planted	20	14	17	19
Winter Wheat				
Headed	21	19	17	11
Oats				
Headed	25	22	17	11

Crop Condition

Crop	Percent of Acreage					Index ¹	
	Excellent	Good	Fair	Poor	Very Poor	2023	2022
Wheat	3	14	33	27	23	44	44
Oats	4	16	33	25	22	46	39
Range and Pasture	1	7	24	37	31	33	32

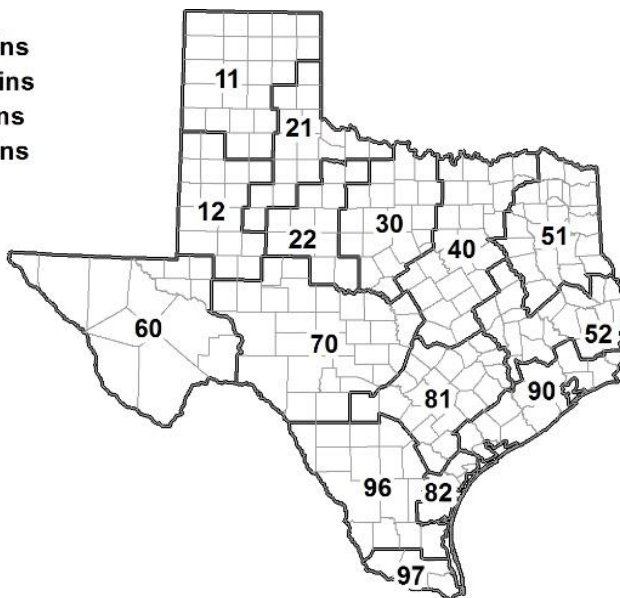
¹ The formula for the condition index is $I = (5V + 25P + 60F + 90G + 110E)/100$ where I = crop condition index and V, P, F, G, E = percentage of crop rated very poor, poor, fair, good, excellent.

Soil Moisture and Days Suitable by District

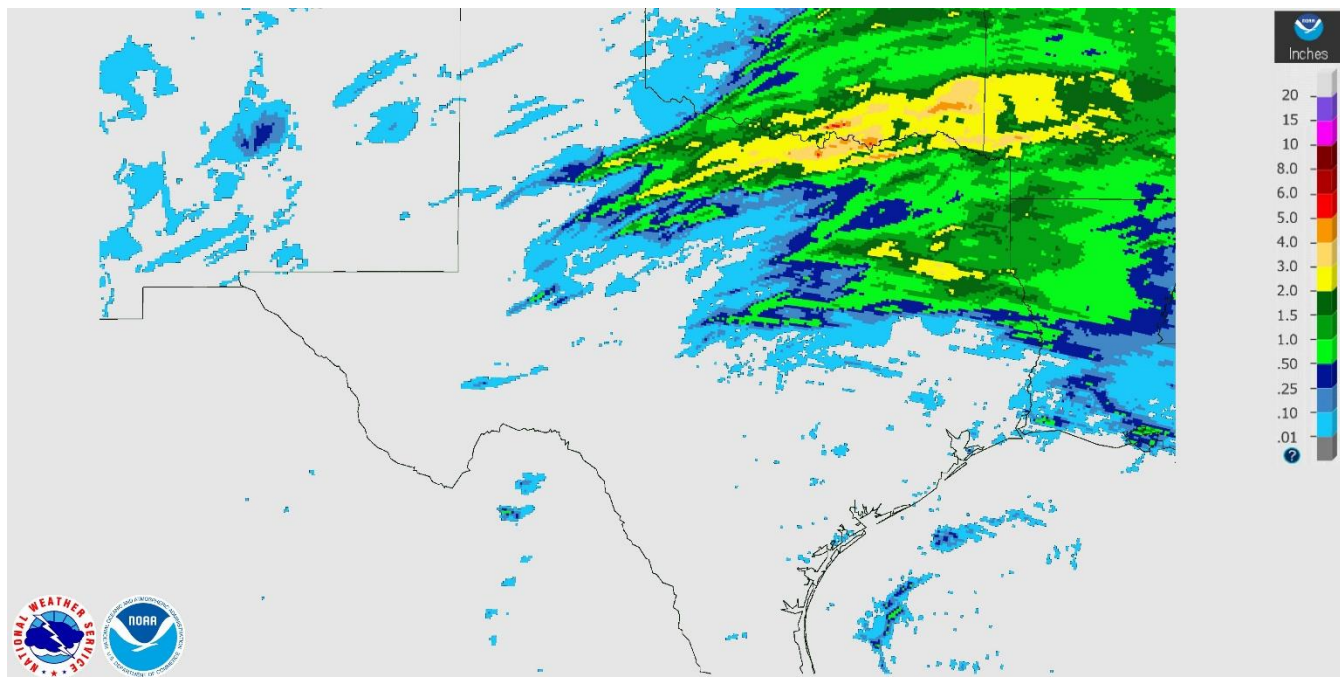
District	Subsoil Moisture Condition by District				Topsoil Moisture Condition by District				Days Suitable for Fieldwork
	Percentage of Acreage				Percentage of Acreage				
	Very Short	Short	Adequate	Surplus	Very Short	Short	Adequate	Surplus	
11	56	32	12	0	60	32	8	0	6.1
12	50	50	0	0	80	20	0	0	7.0
21	22	47	31	0	30	44	26	0	5.2
22	49	51	0	0	28	47	20	5	4.3
30	7	39	54	0	7	27	62	4	4.6
40	9	17	40	34	4	18	45	33	4.1
51	2	9	55	34	2	8	54	36	5.4
52	0	19	77	4	0	18	76	6	6.7
60	30	62	8	0	32	62	6	0	6.0
70	31	51	18	0	46	50	4	0	7.0
81	1	44	52	3	8	56	35	1	6.2
82	37	59	4	0	92	8	0	0	7.0
90	5	40	43	12	5	19	69	7	6.6
96	37	60	3	0	36	57	7	0	6.9
97	14	31	55	0	31	43	26	0	5.4
State	32	38	24	6	39	30	24	7	5.8

Texas Agricultural Districts

- 11 Northern High Plains
- 12 Southern High Plains
- 21 Northern Low Plains
- 22 Southern Low Plains
- 30 Cross Timbers
- 40 Blacklands
- 51 North East
- 52 South East
- 60 Trans-Pecos
- 70 Edwards Plateau
- 81 South Central
- 82 Coastal Bend
- 90 Upper Coast
- 96 South
- 97 Lower Valley

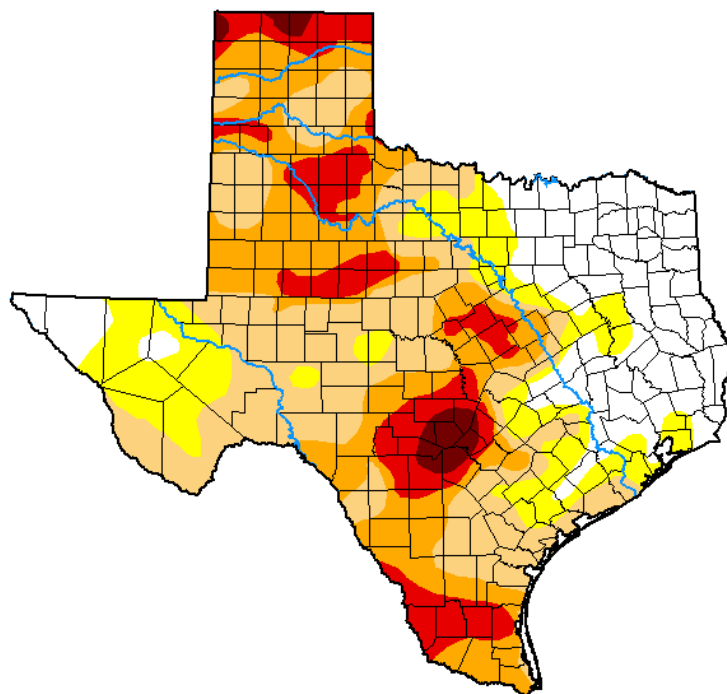


Seven Day Observed Regional Precipitation, March 12, 2023.



Source: National Weather Service, www.nws.noaa.gov

Drought Monitor, Valid March 7, 2023.



Drought Conditions (Percent Area)

	None	D0-D4	D1-D4	D2-D4	D3-D4	D4
Current	20.52	79.48	64.01	35.54	13.41	1.84
Last Week <i>02-28-2023</i>	21.85	78.15	62.21	32.63	12.27	1.84
3 Months Ago <i>12-06-2022</i>	25.79	74.21	52.44	29.26	9.23	1.39
Start of Calendar Year <i>01-03-2023</i>	28.84	71.16	49.90	26.60	7.41	1.60
Start of Water Year <i>09-27-2022</i>	14.96	85.04	61.36	31.61	8.82	1.06
One Year Ago <i>03-08-2022</i>	3.95	96.05	89.93	68.43	36.38	6.39

Intensity:

- None
- D0 Abnormally Dry
- D1 Moderate Drought
- D2 Severe Drought
- D3 Extreme Drought
- D4 Exceptional Drought

The Drought Monitor focuses on broad-scale conditions. Local conditions may vary. For more information on the Drought Monitor, go to <https://droughtmonitor.unl.edu/About.aspx>

Author:

Deborah Bathke
National Drought Mitigation Center



droughtmonitor.unl.edu

Source: National Drought Mitigation Center, a partnership with USDA, U.S. Department of Commerce/NOAA, <http://droughtmonitor.unl.edu>