



Texas Crop Progress and Condition

Southern Plains Regional Field Office
Post Office Box 70 Austin, Texas 78767
(800) 626-3142 · FAX (855) 270-2725 · www.nass.usda.gov/tx

Issue: TX-CW0623 Weekly Summary for February 20 - February 26 Released: February 27, 2023

Most of the state received from trace amounts up to 1 inch of precipitation last week. Areas of South Texas, the Trans Pecos, the Plains, and the Lower Valley received no rain. Drought conditions ranged from none to exceptionally dry, with isolated parts of the Edwards Plateau, South Central Texas, the Blacklands, and the Northern High Plains being the driest. There was an average of 5.8 days suitable for fieldwork.

Small Grains: Winter wheat condition throughout the state was rated fair to poor. Winter wheat headed reached 17 percent, 4 points up from the previous year. Producers continue to hope for more moisture for the Winter Wheat and Oats crops across the state. Oats headed reached 20 percent, up 6 points from the previous year. Oats condition was rated fair to very poor.

Row Crops: Corn planting has begun in regions including the Upper Coast, the Coastal Bend and South Texas while other regions are in the preparation stages. Corn planted has reach 5 percent, 1 point down from the previous year.

Livestock, Range and Pasture: Producers continued using supplemental feeding across much of the state. Ranchers noticed pastures are greening up in South East Texas. The continued high winds have contributed to a lack of soil moisture. Range and pasture condition was rated poor to very poor.

Crop Progress

Stage	Percent of Acreage			
	Current Week	Previous Week	Previous Year	5 Year Average
Corn				
Planted	5	(NA)	4	4
Winter Wheat				
Headed	17	15	13	9
Oats				
Headed	20	18	14	7

(NA) Not available.

Crop Condition

Crop	Percent of Acreage					Index ¹	
	Excellent	Good	Fair	Poor	Very Poor	2023	2022
Wheat	3	16	32	25	24	44	42
Oats	3	13	29	20	35	39	43
Range and Pasture	1	8	23	36	32	33	32

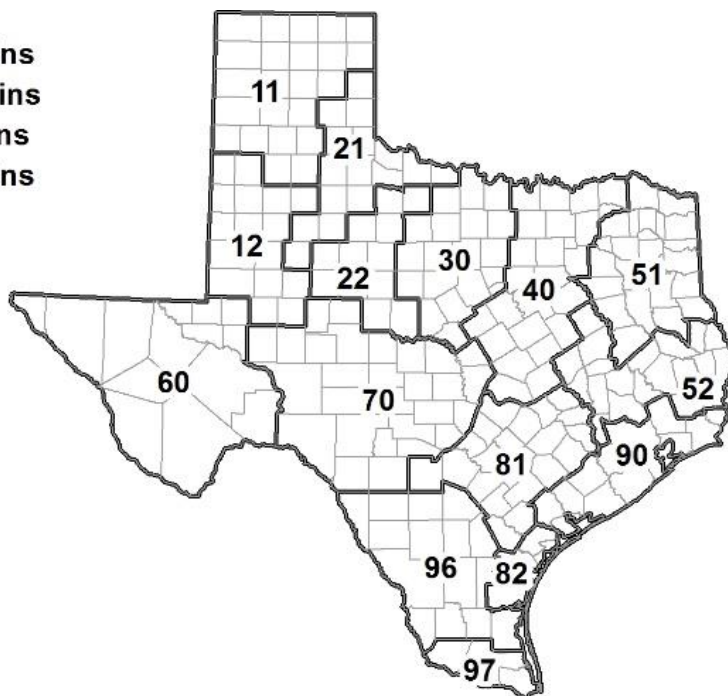
¹ The formula for the condition index is $I = (5V + 25P + 60F + 90G + 110E)/100$ where I = crop condition index and V, P, F, G, E = percentage of crop rated very poor, poor, fair, good, excellent.

Soil Moisture and Days Suitable by District

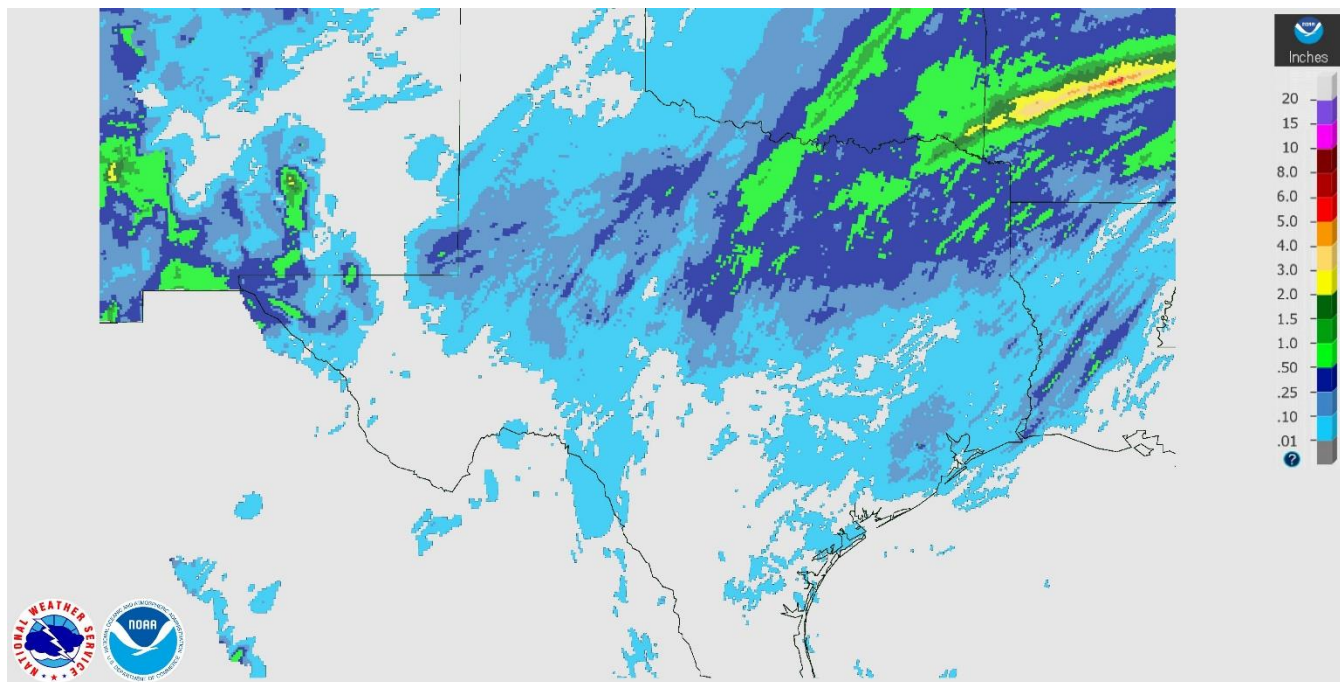
District	Subsoil Moisture Condition by District				Topsoil Moisture Condition by District				Days Suitable for Fieldwork
	Percentage of Acreage				Percentage of Acreage				
	Very Short	Short	Adequate	Surplus	Very Short	Short	Adequate	Surplus	
11	53	38	9	0	58	37	5	0	6.0
12	33	67	0	0	15	81	4	0	6.3
21	28	40	32	0	23	48	29	0	4.9
22	45	42	13	0	30	40	30	0	5.9
30	19	39	42	0	13	37	45	5	5.8
40	10	30	43	17	10	15	56	19	4.5
51	3	5	49	43	2	5	46	47	5.0
52	1	15	71	13	0	15	68	17	6.6
60	23	68	9	0	23	68	9	0	6.1
70	40	31	29	0	49	22	29	0	6.9
81	9	75	16	0	11	78	9	2	6.4
82	22	53	25	0	44	53	3	0	7.0
90	0	35	51	14	0	5	79	16	5.7
96	39	37	24	0	32	54	14	0	6.5
97	13	32	55	0	22	49	29	0	5.4
State	29	43	23	5	26	42	26	6	5.8

Texas Agricultural Districts

- 11 Northern High Plains
- 12 Southern High Plains
- 21 Northern Low Plains
- 22 Southern Low Plains
- 30 Cross Timbers
- 40 Blacklands
- 51 North East
- 52 South East
- 60 Trans-Pecos
- 70 Edwards Plateau
- 81 South Central
- 82 Coastal Bend
- 90 Upper Coast
- 96 South
- 97 Lower Valley

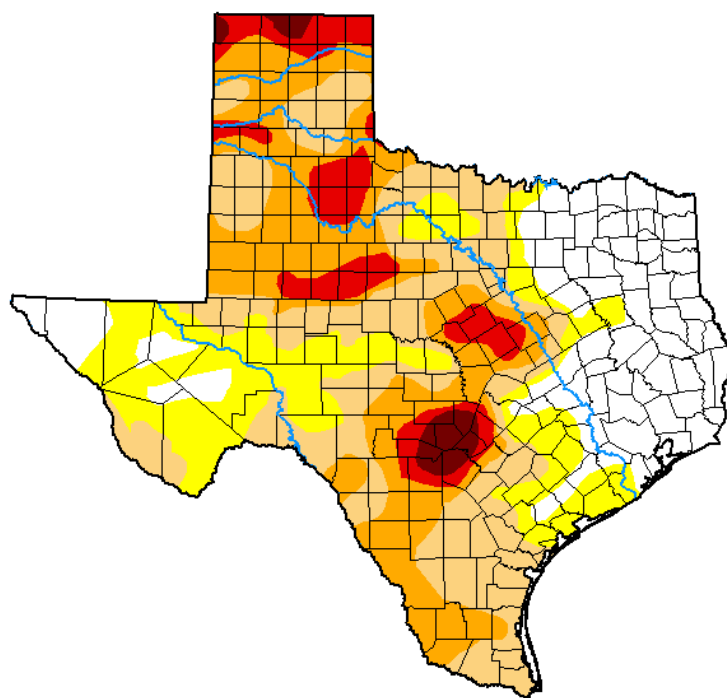


Seven Day Observed Regional Precipitation, February 26, 2023.



Source: National Weather Service, www.nws.noaa.gov

Drought Monitor, Valid February 21, 2023.



Drought Conditions (Percent Area)

	None	D0-D4	D1-D4	D2-D4	D3-D4	D4
Current	22.76	77.24	58.44	31.15	9.70	1.84
Last Week <i>02-14-2023</i>	22.96	77.04	54.75	29.94	9.38	1.82
3 Months Ago <i>11-22-2022</i>	13.07	86.93	62.68	38.09	14.70	2.36
Start of Calendar Year <i>01-03-2023</i>	28.84	71.16	49.90	26.60	7.41	1.60
Start of Water Year <i>09-27-2022</i>	14.96	85.04	61.36	31.61	8.82	1.06
One Year Ago <i>02-22-2022</i>	7.67	92.33	79.06	52.89	22.44	0.00

Intensity:

- None
- D0 Abnormally Dry
- D1 Moderate Drought
- D2 Severe Drought
- D3 Extreme Drought
- D4 Exceptional Drought

The Drought Monitor focuses on broad-scale conditions. Local conditions may vary. For more information on the Drought Monitor, go to <https://droughtmonitor.unl.edu/About.aspx>

Author:

Richard Heim
NCEI/NOAA



droughtmonitor.unl.edu

Source: National Drought Mitigation Center, a partnership with USDA, U.S. Department of Commerce/NOAA, <http://droughtmonitor.unl.edu>