



Texas Crop Progress and Condition

Southern Plains Regional Field Office
Post Office Box 70 Austin, Texas 78767
(800) 626-3142 · FAX (855) 270-2725 · www.nass.usda.gov/tx

Issue: TX-CW4622 Weekly Summary for November 21 - November 27 Released: November 29, 2022

Note: This is the final weekly Crop Progress and Condition report for the 2022 season.

Most of the state received from trace amounts up to 3 inches of precipitation this week with areas of the Upper Coast and South East Texas receiving as much as 6 inches. Drought conditions ranged from none to exceptionally dry, with isolated parts of South Central Texas and the Northern High Plains being the driest. There was an average of 4.2 days suitable for fieldwork, down from 5.5 days the previous week.

Small Grains: Winter wheat emergence continued across the state. Recent rain has helped some areas in the state with oats and wheat development. Winter wheat emerged reached 85 percent, up 3 points from the previous year. Oats emerged reached 86 percent, up 6 points from the previous week, and down 3 points from the previous year.

Row Crops: Cotton harvest is complete across much of the state with some fields in the Plains wrapping up in the coming weeks. Cotton conditions were rated 70 percent very poor to poor. Cotton harvest is currently at 77 percent, 3 points below previous year, and 5 points above normal. Peanut harvest continued. Peanuts mature reached 95 percent, up 1 point from the previous year and up 6 points from normal. Peanuts harvested reached 87 percent, same as the previous year and up 1 point from normal.

Livestock, Range and Pasture: Supplemental feeding continued. Range and pasture conditions were rated 66 percent fair to poor.

Crop Progress

Stage	Percent of Acreage			
	Current Week	Previous Week	Previous Year	5 Year Average
Cotton				
Harvested	77	71	80	72
Peanuts				
Mature	95	91	94	89
Harvested	87	79	87	86
Winter Wheat				
Emerged	85	80	82	80
Oats				
Emerged	86	80	89	86

Crop Condition

Crop	Percent of Acreage					Index ¹	
	Excellent	Good	Fair	Poor	Very Poor	2022	2021
Cotton	2	10	18	23	47	30	78
Peanuts	4	26	51	15	4	62	86
Wheat	6	15	50	21	8	56	48
Oats	22	24	38	12	4	72	52
Range and Pasture	4	13	29	37	17	44	53

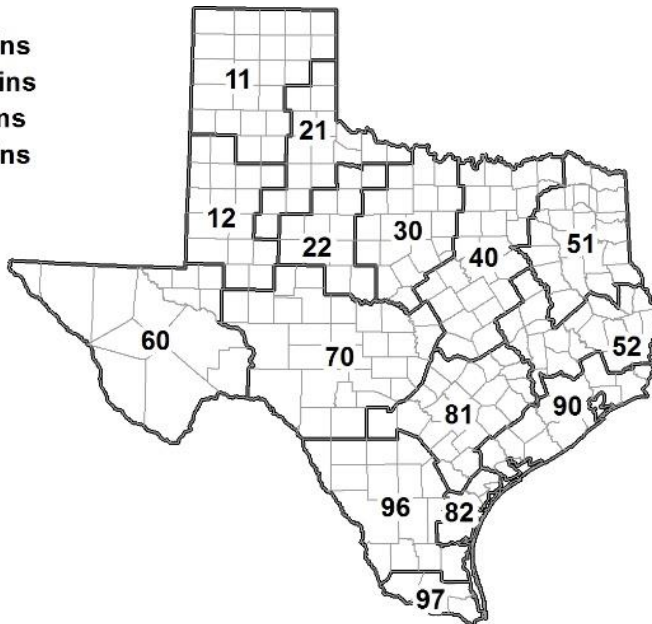
¹ The formula for the condition index is $I = (5V + 25P + 60F + 90G + 110E)/100$ where I = crop condition index and V, P, F, G, E = percentage of crop rated very poor, poor, fair, good, excellent.

Soil Moisture and Days Suitable by District

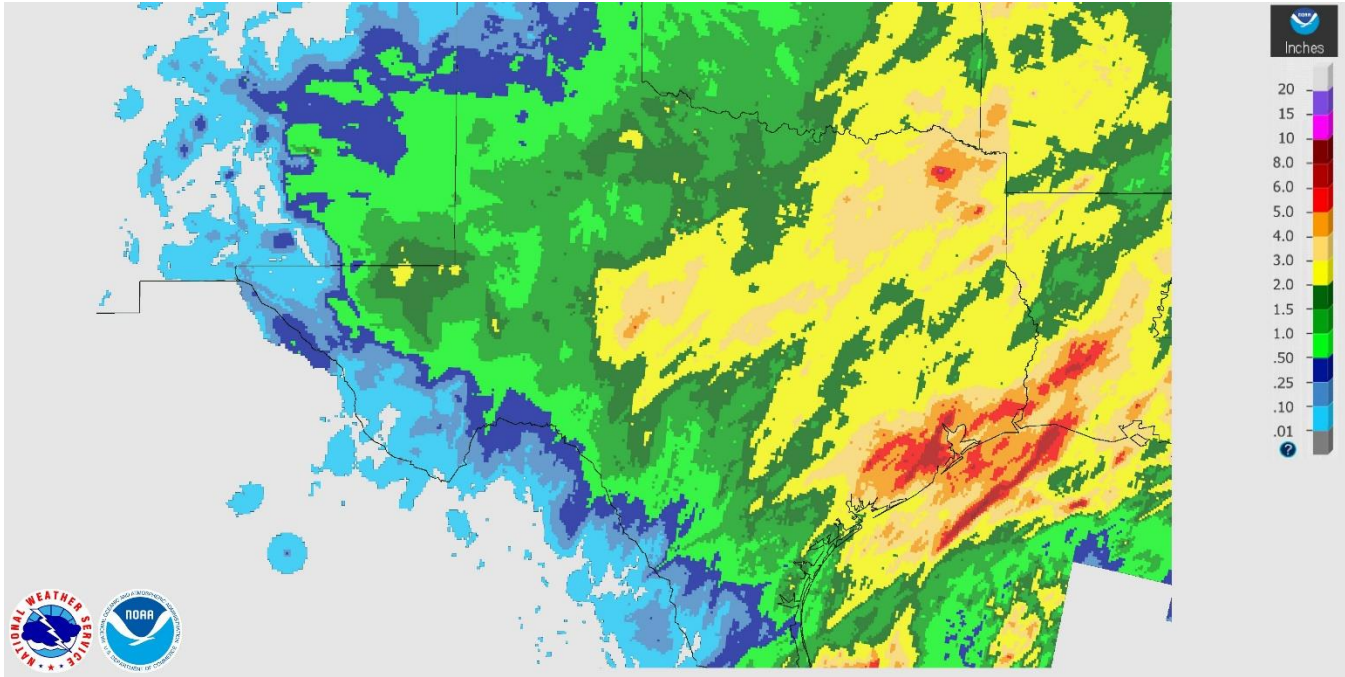
District	Subsoil Moisture Condition by District				Topsoil Moisture Condition by District				Days Suitable for Fieldwork
	Percentage of Acreage				Percentage of Acreage				
	Very Short	Short	Adequate	Surplus	Very Short	Short	Adequate	Surplus	
11	75	25	0	0	71	29	0	0	4.8
12	0	66	34	0	0	23	77	0	4.4
21	31	16	52	1	9	26	62	3	5.3
22	36	54	10	0	36	50	14	0	4.8
30	15	42	43	0	7	38	36	19	4.9
40	11	21	42	26	2	4	50	44	1.6
51	4	33	54	9	3	22	63	12	5.1
52	15	31	46	8	11	36	53	0	3.8
60	0	52	48	0	0	36	64	0	5.2
70	12	15	34	39	11	14	32	43	3.7
81	0	66	33	1	0	59	33	8	3.7
82	0	54	32	14	0	54	32	14	4.2
90	0	0	35	65	0	0	27	73	2.7
96	32	32	27	9	32	32	27	9	7.0
97	8	10	79	3	8	10	75	7	3.4
State	24	37	30	9	20	26	40	14	4.2

Texas Agricultural Districts

- 11 Northern High Plains
- 12 Southern High Plains
- 21 Northern Low Plains
- 22 Southern Low Plains
- 30 Cross Timbers
- 40 Blacklands
- 51 North East
- 52 South East
- 60 Trans-Pecos
- 70 Edwards Plateau
- 81 South Central
- 82 Coastal Bend
- 90 Upper Coast
- 96 South
- 97 Lower Valley

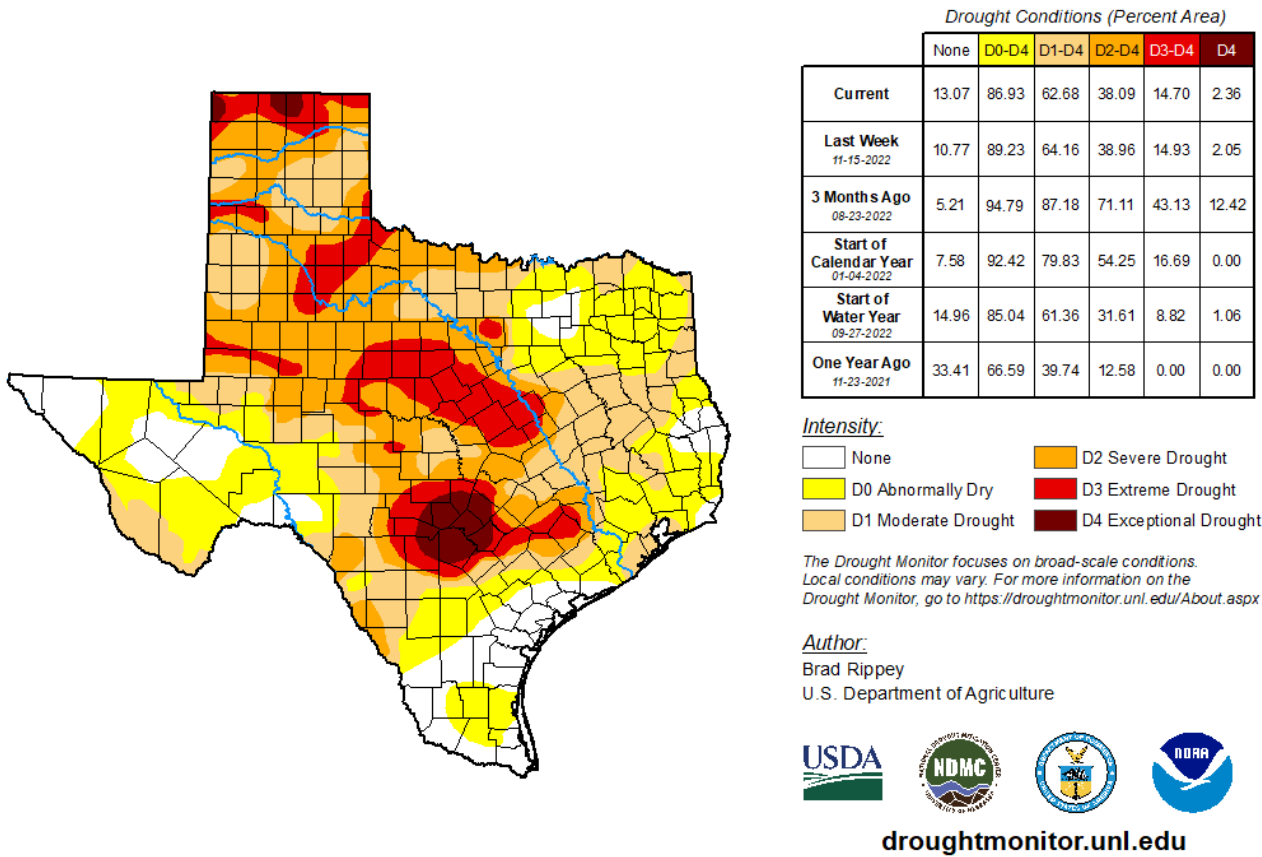


Seven Day Observed Regional Precipitation, November 27, 2022.



Source: National Weather Service, www.nws.noaa.gov

Drought Monitor, Valid November 22, 2022.



Source: National Drought Mitigation Center, a partnership with USDA, U.S. Department of Commerce/NOAA, <http://droughtmonitor.unl.edu>