



# Texas Crop Progress and Condition

Southern Plains Regional Field Office  
Post Office Box 70 Austin, Texas 78767  
(800) 626-3142 · FAX (855) 270-2725 · www.nass.usda.gov/tx

Issue: TX-CW4422

Weekly Summary for November 7 - November 13

Released: November 14, 2022

Much of the state received from trace amounts up to 2 inches of precipitation this week with areas of East Texas, the Upper Coast, the Blacklands and the Coastal Bend receiving as much as 3 inches. Drought conditions ranged from none to exceptionally dry, with isolated parts of South Central Texas, the Plains, and the Blacklands being the driest. There was an average of 5.9 days suitable for fieldwork, up from 5.8 days the previous week.

**Small Grains:** Winter wheat emergence and planting continues across the state. Recent rain has helped some areas in the state with oats and wheat development. Winter wheat planted reached 93 percent, up 5 points from the previous year. Winter wheat emerged reached 75 percent, up 5 points from the previous year. Oats planted reached 90 percent, up 10 points from the previous week, and down 3 points from the previous year. Oats emerged reached 72 percent, up 11 points from the previous week, and down 4 points from the previous year.

**Row Crops:** Cotton harvest continued across much of the state, cotton conditions were rated 70 percent very poor to poor. Cotton harvest is currently at 61 percent, 3 points above previous year, and 5 points above normal. Peanut and soybean harvest continued to progress statewide. Soybeans harvested reached 98 percent, up 1 point from the previous year, up 7 points from normal. Peanuts mature reached 85 percent, up 9 points from the previous year and up 10 points from normal. Peanuts harvested reached 70 percent, up 3 points from the previous year and up 2 points from normal.

**Livestock, Range and Pasture:** Supplemental feeding continued. Range and pasture conditions were rated 57 percent poor to very poor.

## Crop Progress

Stage	Percent of Acreage			
	Current Week	Previous Week	Previous Year	5 Year Average
<b>Cotton</b>				
Harvested	61	51	59	56
<b>Peanuts</b>				
Mature	85	79	76	75
Harvested	70	60	67	68
<b>Soybeans</b>				
Harvested	98	90	97	91
<b>Winter Wheat</b>				
Planted	93	88	88	85
Emerged	75	67	70	71
<b>Oats</b>				
Planted	90	80	93	92
Emerged	72	61	76	75

### Crop Condition

Crop	Percent of Acreage					Index <sup>1</sup>	
	Excellent	Good	Fair	Poor	Very Poor	2022	2021
Cotton	2	10	18	23	47	30	78
Peanuts	4	26	51	15	4	62	86
Soybeans	1	12	24	28	35	35	72
Wheat	3	15	34	27	21	45	52
Oats	3	17	28	24	28	43	54
Range and Pasture	3	13	27	30	27	40	54

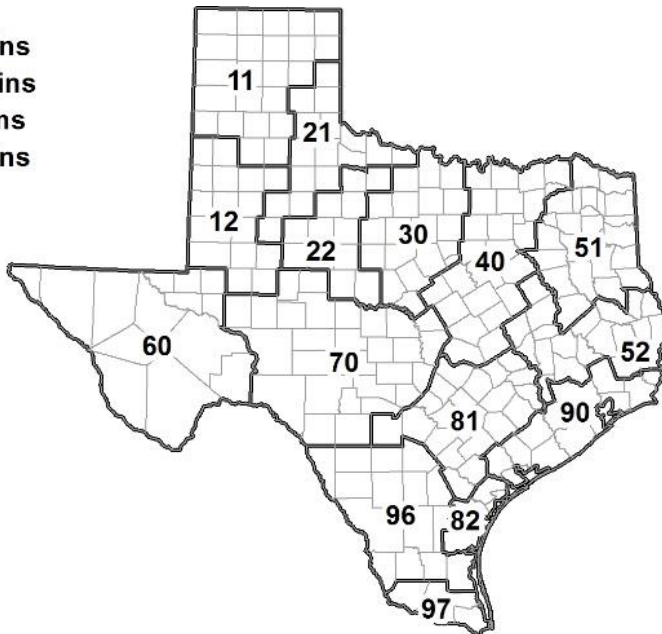
<sup>1</sup> The formula for the condition index is  $I = (5V + 25P + 60F + 90G + 110E)/100$  where I = crop condition index and V, P, F, G, E = percentage of crop rated very poor, poor, fair, good, excellent.

### Soil Moisture and Days Suitable by District

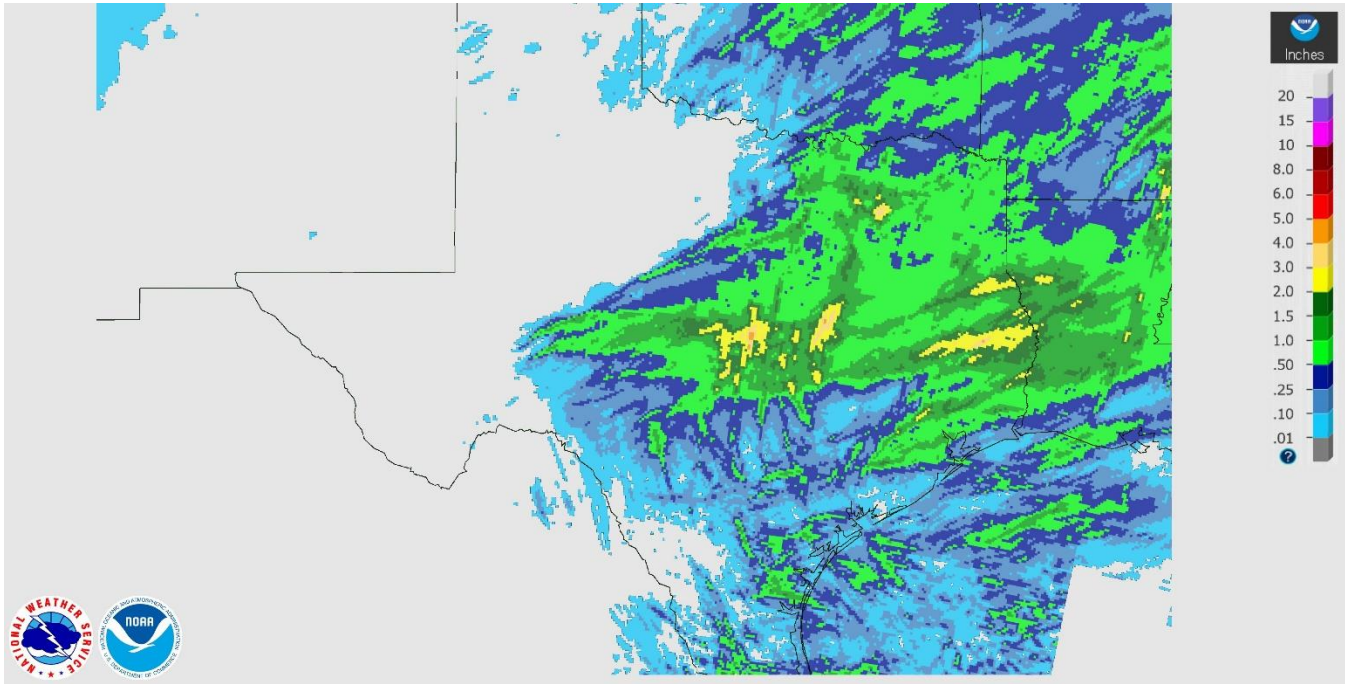
District	Subsoil Moisture Condition by District				Topsoil Moisture Condition by District				Days Suitable for Fieldwork
	Percentage of Acreage				Percentage of Acreage				
	Very Short	Short	Adequate	Surplus	Very Short	Short	Adequate	Surplus	
11	40	47	13	0	26	55	19	0	6.8
12	62	38	0	0	47	53	0	0	7.0
21	23	49	28	0	15	64	21	0	6.5
22	55	40	5	0	33	38	29	0	6.2
30	26	57	17	0	14	60	26	0	5.7
40	18	37	41	4	11	23	62	4	3.7
51	12	39	44	5	5	43	47	5	5.6
52	20	51	29	0	15	47	38	0	6.2
60	6	17	65	12	5	18	65	12	6.2
70	56	31	13	0	22	45	33	0	6.2
81	38	31	31	0	39	29	32	0	6.0
82	22	0	67	11	0	22	67	11	2.3
90	2	31	59	8	5	35	53	7	4.6
96	35	29	36	0	28	35	36	1	6.4
97	11	24	65	0	31	57	12	0	6.1
State	36	40	23	1	25	46	28	1	5.9

### Texas Agricultural Districts

- 11 Northern High Plains
- 12 Southern High Plains
- 21 Northern Low Plains
- 22 Southern Low Plains
- 30 Cross Timbers
- 40 Blacklands
- 51 North East
- 52 South East
- 60 Trans-Pecos
- 70 Edwards Plateau
- 81 South Central
- 82 Coastal Bend
- 90 Upper Coast
- 96 South
- 97 Lower Valley

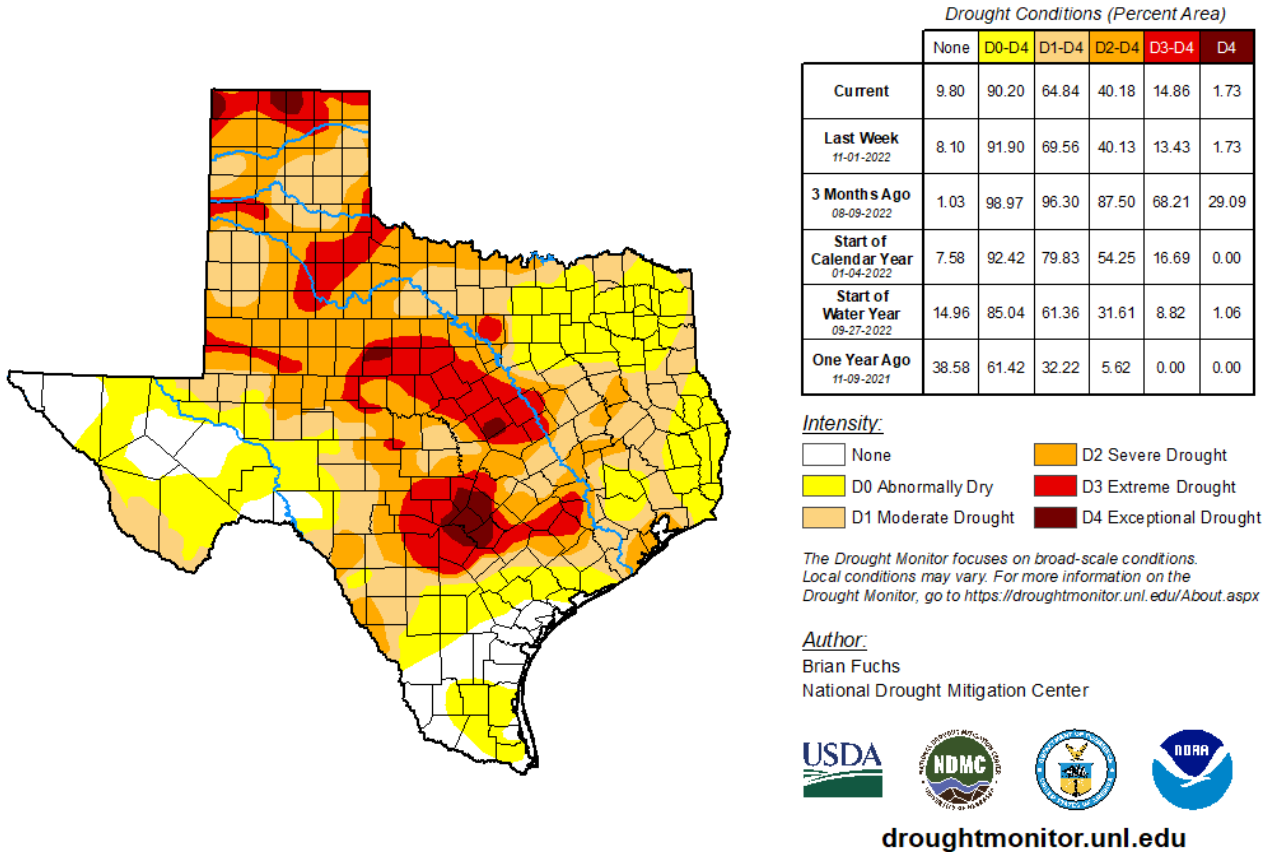


**Seven Day Observed Regional Precipitation, November 13, 2022.**



Source: National Weather Service, [www.nws.noaa.gov](http://www.nws.noaa.gov)

**Drought Monitor, Valid November 8, 2022.**



Source: National Drought Mitigation Center, a partnership with USDA, U.S. Department of Commerce/NOAA, <http://droughtmonitor.unl.edu>