



Texas Crop Progress and Condition

Southern Plains Regional Field Office
Post Office Box 70 Austin, Texas 78767
(800) 626-3142 · FAX (855) 270-2725 · www.nass.usda.gov/tx

Issue: TX-CW4122

Weekly Summary for October 17 - October 23

Released: October 24, 2022

Most of the state received from trace amounts up to 3 inches of precipitation this week with areas of the Northern High Plains and the Blacklands receiving little to no rain. Drought conditions ranged from none to exceptionally dry, with isolated parts of South Central Texas, the Plains, and the Blacklands being the driest. There was an average of 6.1 days suitable for fieldwork, down from 6.3 days the previous week.

Small Grains: Winter wheat and oat planting continued across the state. Winter wheat planted reached 75 percent, up 4 points from the previous year. Winter wheat emerged reached 46 percent, down 1 point from the previous year. Oats planted reached 65 percent, up 6 points from the previous week, and unchanged from the previous year.

Row Crops: Cotton harvest continued to progress across much of the state, cotton conditions were rated 64 percent very poor to poor. Cotton harvest is currently at 41 percent, 2 points above previous year, and 4 points above normal. Peanut and soybean harvest continued to progress statewide. Soybeans harvested reached 75 percent, down 10 points from the previous year and down 6 points from normal. Peanuts mature reached 70 percent, up 9 points from the previous year and up 15 points from normal. Peanuts harvested reached 32 percent, up 3 points from the previous year and normal.

Livestock, Range and Pasture: Supplemental feeding continued. Range and pasture conditions were rated 62 percent very poor to fair.

Crop Progress

Stage	Percent of Acreage			
	Current Week	Previous Week	Previous Year	5 Year Average
Corn				
Harvested	93	88	93	86
Cotton				
Bolls Opening	88	85	88	88
Harvested	41	40	39	37
Peanuts				
Mature	65	60	61	55
Harvested	42	25	29	29
Soybeans				
Harvested	72	65	85	81
Sunflowers				
Harvested	90	89	83	77
Winter Wheat				
Planted	75	70	71	69
Emerged	46	37	45	48
Oats				
Planted	65	59	73	73
Emerged	40	30	40	44

Crop Condition

Crop	Percent of Acreage					Index ¹	
	Excellent	Good	Fair	Poor	Very Poor	2022	2021
Corn	3	14	31	23	29	42	-3
Cotton	2	8	22	37	31	33	80
Peanuts	1	34	51	14	0	66	86
Soybeans	1	12	24	28	35	35	-3
Range and Pasture	1	10	29	27	33	36	59

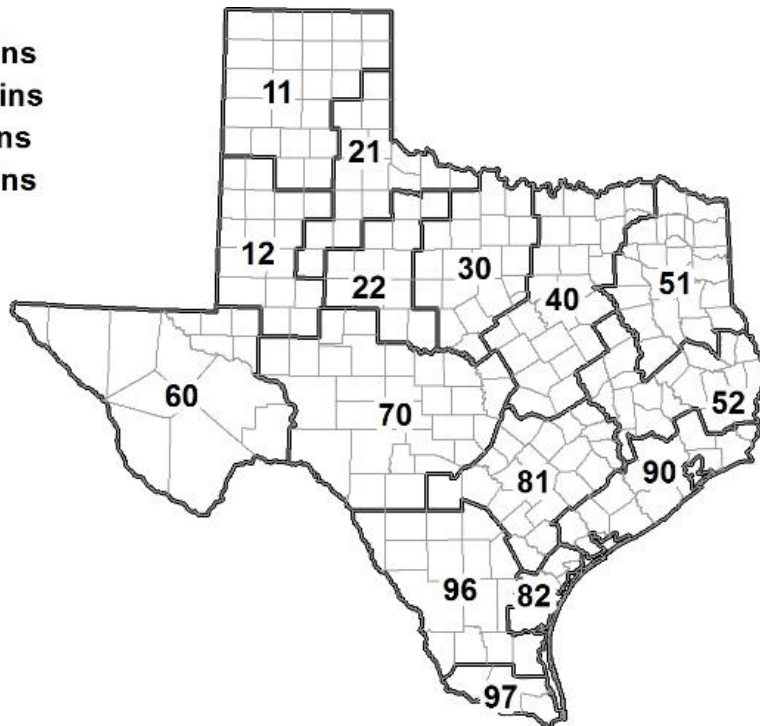
¹ The formula for the condition index is $I = (5V + 25P + 60F + 90G + 110E)/100$ where I = crop condition index and V, P, F, G, E = percentage of crop rated very poor, poor, fair, good, excellent.

Soil Moisture and Days Suitable by District

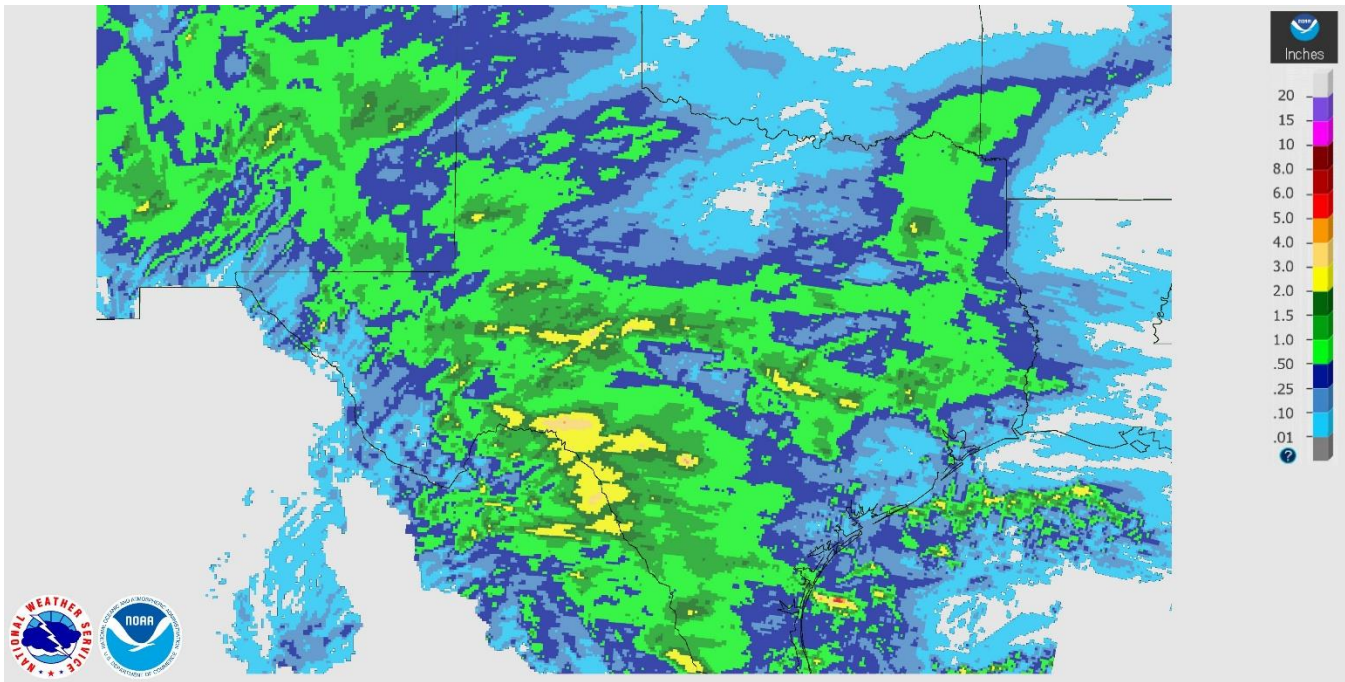
District	Subsoil Moisture Condition by District				Topsoil Moisture Condition by District				Days Suitable for Fieldwork
	Percentage of Acreage				Percentage of Acreage				
	Very Short	Short	Adequate	Surplus	Very Short	Short	Adequate	Surplus	
11	34	43	22	1	36	35	28	1	6.7
12	42	46	12	0	32	48	20	0	4.5
21	71	19	9	1	71	16	10	3	6.9
22	79	21	0	0	82	18	0	0	6.2
30	49	33	18	0	52	31	17	0	6.4
40	38	48	14	0	32	47	21	0	6.2
51	34	44	17	5	37	50	9	4	6.9
52	37	52	11	0	38	51	10	1	7.0
60	3	26	71	0	2	28	70	0	7.0
70	49	48	3	0	33	36	31	0	4.7
81	42	52	6	0	58	37	5	0	6.2
82	1	50	49	0	0	60	40	0	7.0
90	70	23	7	0	47	50	3	0	7.0
96	21	46	32	1	19	43	38	0	5.0
97	10	22	68	0	23	60	17	0	7.0
State	43	40	16	1	41	39	19	1	6.1

Texas Agricultural Districts

- 11 Northern High Plains
- 12 Southern High Plains
- 21 Northern Low Plains
- 22 Southern Low Plains
- 30 Cross Timbers
- 40 Blacklands
- 51 North East
- 52 South East
- 60 Trans-Pecos
- 70 Edwards Plateau
- 81 South Central
- 82 Coastal Bend
- 90 Upper Coast
- 96 South
- 97 Lower Valley

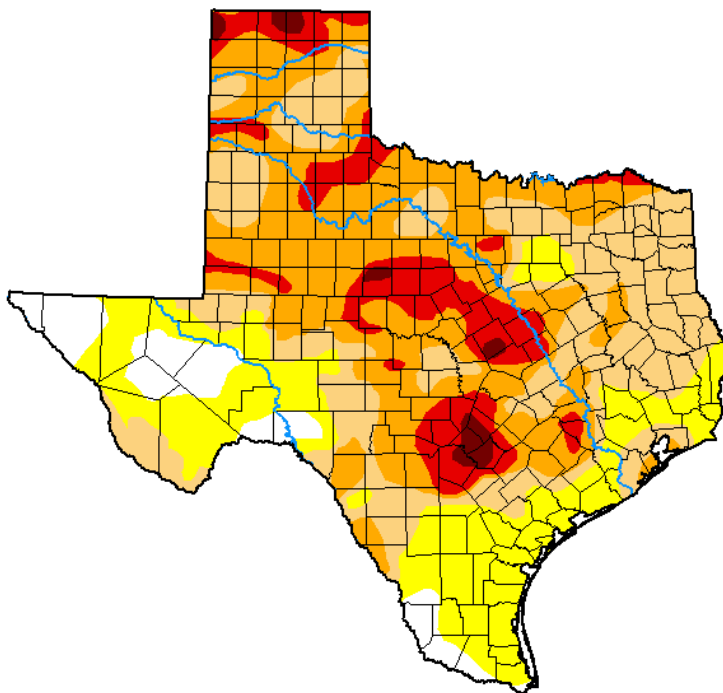


Seven Day Observed Regional Precipitation, October 23, 2022.



Source: National Weather Service, www.nws.noaa.gov

Drought Monitor, Valid October 18, 2022.



Drought Conditions (Percent Area)

	None	D0-D4	D1-D4	D2-D4	D3-D4	D4
Current	6.59	93.41	71.77	43.11	12.80	1.40
Last Week <i>10-11-2022</i>	5.75	94.25	72.82	43.58	15.25	1.48
3 Months Ago <i>07-19-2022</i>	0.82	99.18	94.77	84.08	56.67	20.40
Start of Calendar Year <i>01-04-2022</i>	7.58	92.42	79.83	54.25	16.69	0.00
Start of Water Year <i>09-27-2022</i>	14.96	85.04	61.36	31.61	8.82	1.06
One Year Ago <i>10-19-2021</i>	53.43	46.57	19.05	0.88	0.00	0.00

Intensity:

- None
- D0 Abnormally Dry
- D1 Moderate Drought
- D2 Severe Drought
- D3 Extreme Drought
- D4 Exceptional Drought

The Drought Monitor focuses on broad-scale conditions. Local conditions may vary. For more information on the Drought Monitor, go to <https://droughtmonitor.unl.edu/About.aspx>

Author:

Adam Hartman
NOAA/NWS/NCEP/CPC



droughtmonitor.unl.edu

Source: National Drought Mitigation Center, a partnership with USDA, U.S. Department of Commerce/NOAA, <http://droughtmonitor.unl.edu>