



Texas Crop Progress and Condition

Southern Plains Regional Field Office
Post Office Box 70 Austin, Texas 78767
(800) 626-3142 · FAX (855) 270-2725 · www.nass.usda.gov/tx

Issue: TX-CW3122

Weekly Summary for August 15 - August 21

Released: August 22, 2022

Texas producers were grateful for rainfall. Much of the state received from trace amounts to 3.00 inches of precipitation. Isolated areas in South Texas and the Coastal Bend received significantly higher amounts. Drought conditions ranged from none to exceptionally dry, with the Northern Low Plains, the Southern Plains, the Edwards Plateau, the Blacklands, and South Central Texas being the driest. There was an average of 5.9 days suitable for fieldwork, down from last week.

Row Crops: Cotton harvest continued across the state. Some cotton producers in the Blacklands reported delays in harvest because of the rain. Operations in the Southern High Plains noted that cotton plants have perked up a bit with moisture from the rain. Sorghum harvest continued; reporters in the Cross Timbers and Southern Low Plains expressed concerns about crop yields and quality. In the Northern High Plains there were reports of corn struggling with pollination due to high temperatures.

Livestock, Range and Pasture: Supplemental feeding continued across the state. Producers continued liquidating their cattle due to the lack of quality pastureland and dry conditions. Despite much needed rain arriving last week, range and pasture conditions are rated 84 percent very poor to poor.

Crop Progress

Stage	Percent of Acreage			
	Current Week	Previous Week	Previous Year	5 Year Average
Corn				
Dough	86	80	89	91
Dented	76	70	81	81
Mature	67	58	57	57
Harvested	44	29	33	43
Cotton				
Setting Bolls	85	76	71	81
Bolls Opening	25	21	15	21
Peanuts				
Pegging	87	80	87	89
Rice				
Harvested	66	51	49	59
Sorghum				
Headed	97	94	94	92
Coloring	81	74	79	80
Mature	67	60	68	69
Harvested	52	48	53	59
Soybeans				
Blooming	96	93	95	96
Setting Pods	84	81	80	81
Dropping Leaves	47	38	38	35
Sunflowers				
Harvested	46	41	48	45

Crop Condition

Crop	Percent of Acreage					Index ¹	
	Excellent	Good	Fair	Poor	Very Poor	2022	2021
Corn	2	15	34	22	27	43	79
Cotton	1	10	30	31	28	37	83
Peanuts	2	22	68	8	0	65	83
Rice	22	29	48	1	0	79	85
Sorghum	1	16	41	29	13	48	79
Soybeans	2	15	39	38	6	49	75
Range and Pasture	0	2	14	31	53	21	69

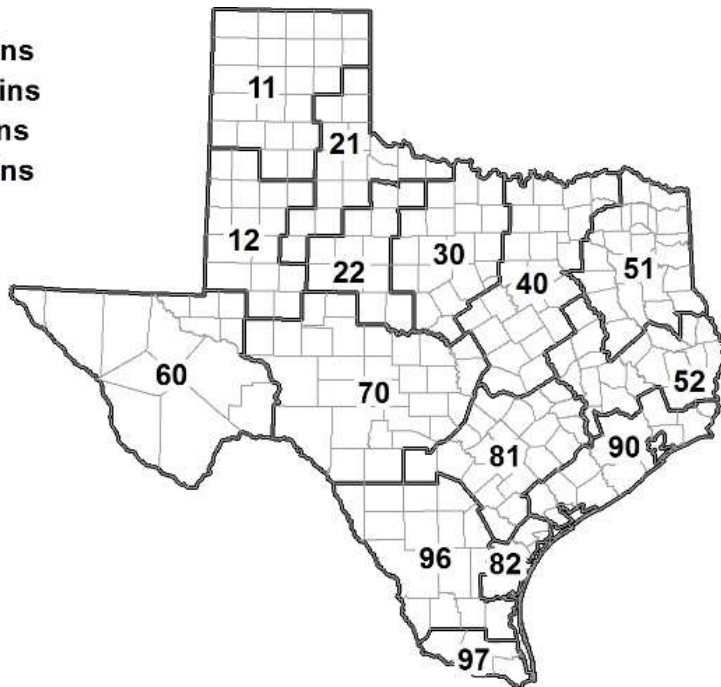
¹ The formula for the condition index is $I = (5V + 25P + 60F + 90G + 110E)/100$ where I = crop condition index and V, P, F, G, E = percentage of crop rated very poor, poor, fair, good, excellent.

Soil Moisture and Days Suitable by District

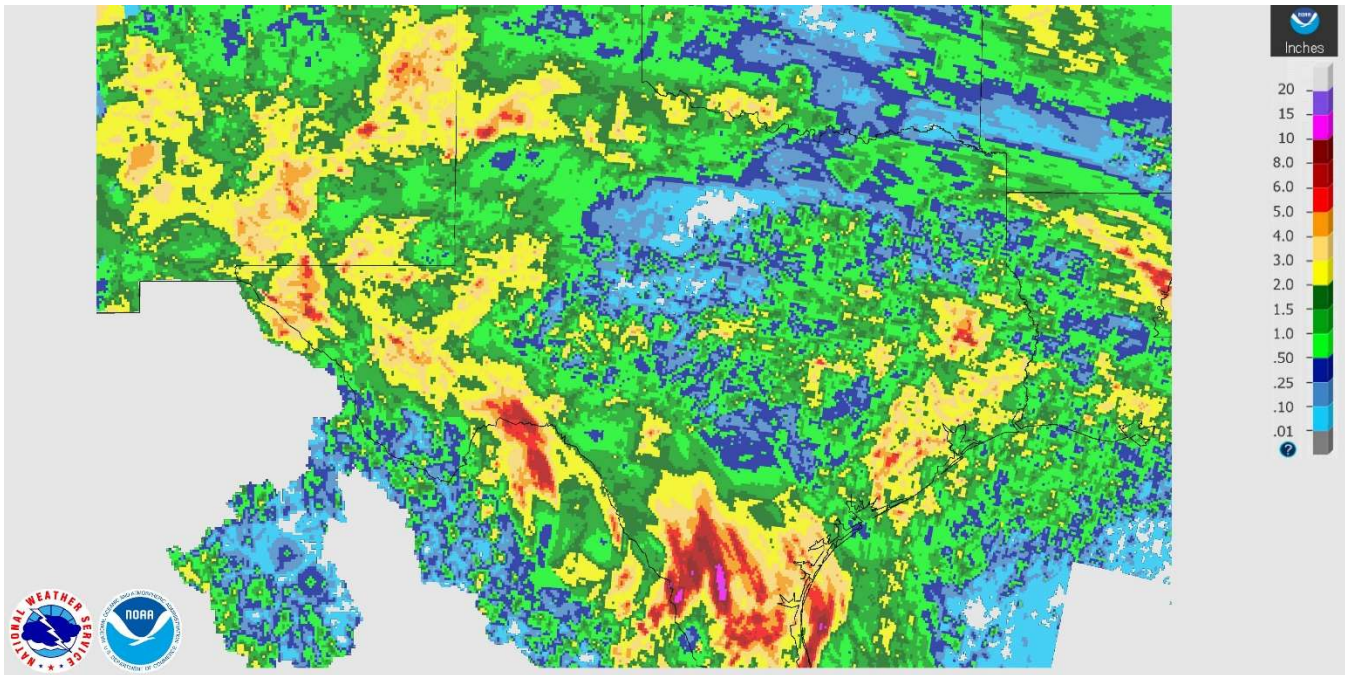
District	Subsoil Moisture Condition by District				Topsoil Moisture Condition by District				Days Suitable for Fieldwork
	Percentage of Acreage				Percentage of Acreage				
	Very Short	Short	Adequate	Surplus	Very Short	Short	Adequate	Surplus	
11	12	34	54	0	8	17	66	9	5.1
12	100	0	0	0	100	0	0	0	7.0
21	53	24	12	11	54	9	26	11	5.2
22	69	31	0	0	72	25	3	0	6.1
30	61	11	28	0	79	17	4	0	5.2
40	57	25	18	0	50	30	19	1	6.5
51	76	17	5	2	72	26	2	0	6.9
52	71	28	1	0	71	28	1	0	6.9
60	29	34	37	0	29	31	40	0	6.6
70	58	33	9	0	56	27	17	0	5.6
81	84	16	0	0	86	14	0	0	7.0
82	0	0	55	45	0	0	55	45	3.1
90	45	28	27	0	38	29	33	0	5.6
96	28	23	48	1	28	17	53	2	4.6
97	23	15	53	9	23	20	57	0	3.6
State	55	21	22	2	54	17	25	4	5.9

Texas Agricultural Districts

- 11 Northern High Plains
- 12 Southern High Plains
- 21 Northern Low Plains
- 22 Southern Low Plains
- 30 Cross Timbers
- 40 Blacklands
- 51 North East
- 52 South East
- 60 Trans-Pecos
- 70 Edwards Plateau
- 81 South Central
- 82 Coastal Bend
- 90 Upper Coast
- 96 South
- 97 Lower Valley

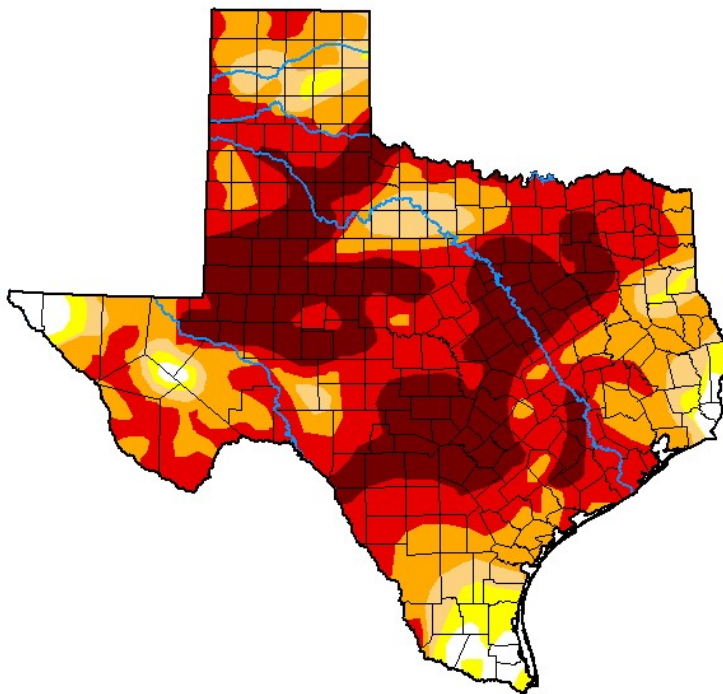


Seven Day Observed Regional Precipitation, August 21, 2022.



Source: National Weather Service, www.nws.noaa.gov

Drought Monitor, Valid August 16, 2022.



Drought Conditions (Percent Area)

	None	D0-D4	D1-D4	D2-D4	D3-D4	D4
Current	2.79	97.21	93.40	85.05	61.91	26.49
Last Week <i>08-09-2022</i>	1.03	98.97	96.30	87.50	68.21	29.09
3 Months Ago <i>05-17-2022</i>	9.57	90.43	81.42	69.47	55.79	28.91
Start of Calendar Year <i>01-04-2022</i>	7.58	92.42	79.83	54.25	16.69	0.00
Start of Water Year <i>09-28-2021</i>	45.57	54.43	7.26	0.27	0.00	0.00
One Year Ago <i>08-17-2021</i>	91.79	8.21	1.17	0.00	0.00	0.00

Intensity:

- None
- D0 Abnormally Dry
- D1 Moderate Drought
- D2 Severe Drought
- D3 Extreme Drought
- D4 Exceptional Drought

The Drought Monitor focuses on broad-scale conditions. Local conditions may vary. For more information on the Drought Monitor, go to <https://droughtmonitor.unl.edu/About.aspx>

Author:

Richard Tinker
CPC/NOAA/NWS/NCEP



droughtmonitor.unl.edu

Source: National Drought Mitigation Center, a partnership with USDA, U.S. Department of Commerce/NOAA, <http://droughtmonitor.unl.edu>