



Texas Crop Progress and Condition

Southern Plains Regional Field Office
Post Office Box 70 Austin, Texas 78767
(800) 626-3142 · FAX (855) 270-2725 · www.nass.usda.gov/tx

Issue: TX-CW2922

Weekly Summary for August 1 - August 7

Released: August 8, 2022

Much of the state received from trace amounts to upwards of 3.00 inches of precipitation. Isolated areas in the Trans-Pecos received up to 6.00 inches. Drought conditions ranged from none to exceptionally dry, with the High and Low Plains, the Edwards Plateau, the Blacklands, and South Central Texas being the driest. There was an average of 6.4 days suitable for fieldwork, up from last week.

Row Crops: Cotton producers in the Southern Plains and the Northern Low Plains have continued to report inadequate rain along with excessive heat. There have been reports of cotton harvested in the Upper Coast, the Trans-Pecos and the Edwards Plateau. Corn harvest continued across the state, with producers noticing lower crop yields in areas of the Blacklands due to drought conditions. In the Upper Coast, some producers are harvesting corn for forage.

Fruit, Vegetable and Specialty Crops: Pecans continue to progress well across the state. The Trans-Pecos, the Edwards Plateau, South and South Central Texas are still irrigating. Melons and cantaloupe continued to progress well in South Texas and the Southern High Plains.

Livestock, Range and Pasture: Supplemental feeding continued across the state. Producers continued liquidating their cattle due to the lack of quality pastureland and dry conditions. Range and pasture conditions are rated 90 percent very poor to poor.

Crop Progress

Stage	Percent of Acreage			
	Current Week	Previous Week	Previous Year	5 Year Average
Corn				
Silked	95	90	94	96
Dough	73	69	82	79
Dented	64	60	64	65
Mature	55	36	47	47
Harvested	16	8	-	16
Cotton				
Squaring	94	86	82	91
Setting Bolls	63	51	53	55
Peanuts				
Pegging	71	57	69	71
Rice				
Headed	94	91	89	96
Harvested	25	12	22	27
Sorghum				
Headed	89	86	88	86
Coloring	70	67	68	70
Mature	50	48	57	59
Harvested	39	36	26	45
Soybeans				
Blooming	88	82	84	88
Setting Pods	70	58	71	70
Dropping Leaves	20	7	16	16
Sunflowers				
Harvested	33	29	33	36

(NA) Not available.

Crop Condition

Crop	Percent of Acreage					Index ¹	
	Excellent	Good	Fair	Poor	Very Poor	2022	2021
Corn	2	15	33	30	20	44	79
Cotton	0	14	38	22	26	42	80
Peanuts	6	26	50	14	4	64	77
Rice	17	25	57	1	0	76	79
Sorghum	0	16	33	25	26	42	79
Soybeans	1	19	45	28	7	53	74
Range and Pasture	0	1	9	27	63	16	71

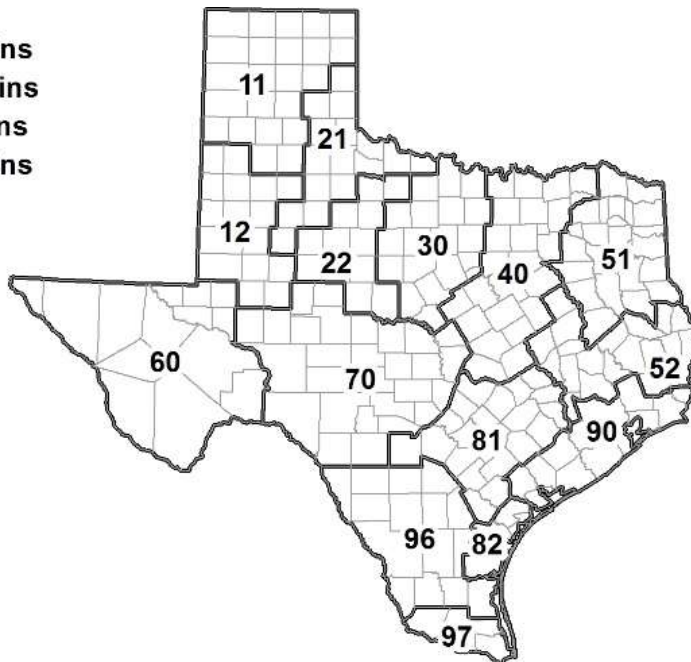
¹ The formula for the condition index is $I = (5V + 25P + 60F + 90G + 110E)/100$ where I = crop condition index and V, P, F, G, E = percentage of crop rated very poor, poor, fair, good, excellent.

Soil Moisture and Days Suitable by District

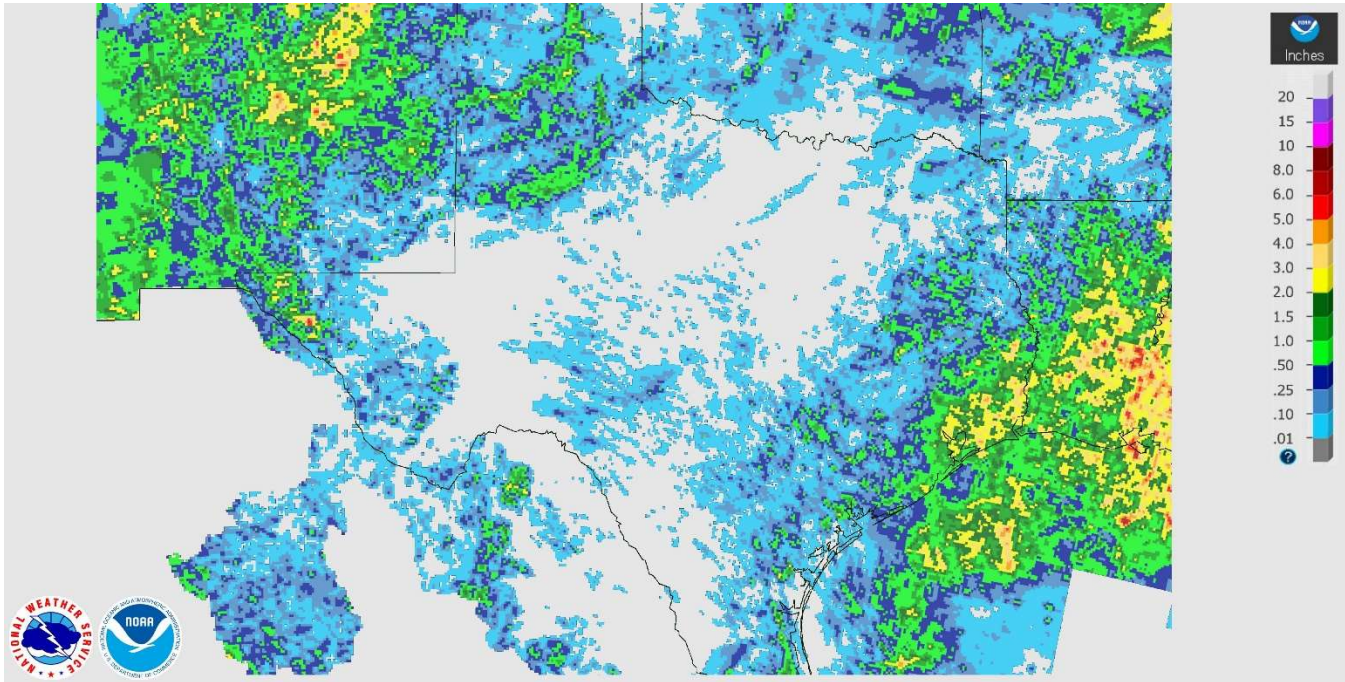
District	Topsoil Moisture Condition by District				Subsoil Moisture Condition by District				Days Suitable for Fieldwork
	Percentage of Acreage				Percentage of Acreage				
	Very Short	Short	Adequate	Surplus	Very Short	Short	Adequate	Surplus	
11	8	17	66	9	12	34	54	0	5.1
12	100	0	0	0	100	0	0	0	7.0
21	77	23	0	0	76	24	0	0	6.9
22	98	2	0	0	97	3	0	0	6.5
30	86	10	4	0	83	14	0	3	5.8
40	88	10	2	0	77	22	1	0	7.0
51	75	20	5	0	76	17	5	2	6.9
52	71	28	1	0	71	28	1	0	6.9
60	29	31	40	0	29	34	37	0	6.6
70	77	23	0	0	63	37	0	0	5.6
81	86	14	0	0	84	16	0	0	7.0
82	61	39	0	0	61	39	0	0	7.0
90	64	26	10	0	60	27	8	5	6.5
96	81	18	1	0	71	28	1	0	6.6
97	60	30	10	0	37	38	25	0	5.4
State	69	14	15	2	67	20	13	0	6.4

Texas Agricultural Districts

- 11 Northern High Plains
- 12 Southern High Plains
- 21 Northern Low Plains
- 22 Southern Low Plains
- 30 Cross Timbers
- 40 Blacklands
- 51 North East
- 52 South East
- 60 Trans-Pecos
- 70 Edwards Plateau
- 81 South Central
- 82 Coastal Bend
- 90 Upper Coast
- 96 South
- 97 Lower Valley

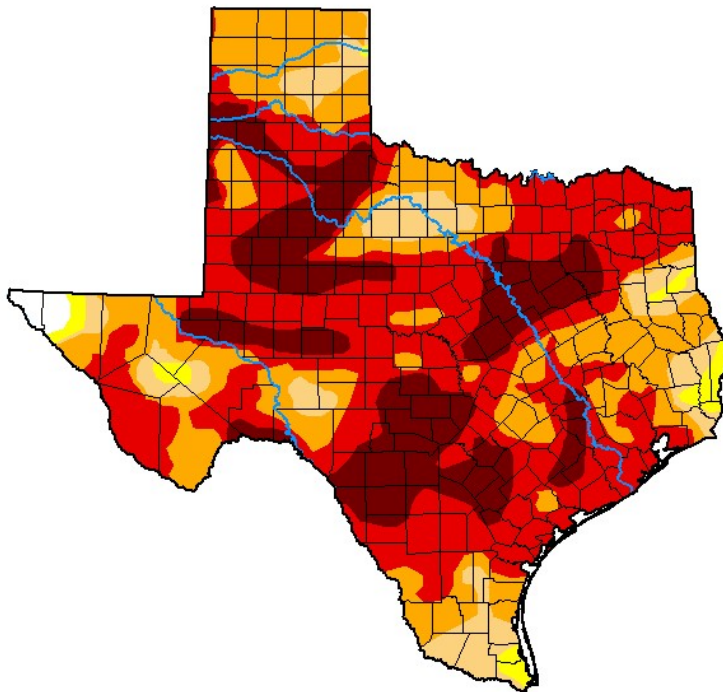


Seven Day Observed Regional Precipitation, August 7, 2022.



Source: National Weather Service, www.nws.noaa.gov

Drought Monitor, Valid August 2, 2022.



Drought Conditions (Percent Area)

	None	D0-D4	D1-D4	D2-D4	D3-D4	D4
Current	0.82	99.18	97.11	87.92	61.86	21.31
Last Week 07-26-2022	0.82	99.18	97.40	85.15	60.06	18.80
3 Months Ago 05-03-2022	8.83	91.17	80.02	67.29	50.91	23.19
Start of Calendar Year 01-04-2022	7.58	92.42	79.83	54.25	16.69	0.00
Start of Water Year 09-28-2021	45.57	54.43	7.26	0.27	0.00	0.00
One Year Ago 08-03-2021	94.72	5.28	1.10	0.00	0.00	0.00

Intensity:

- None
- D0 Abnormally Dry
- D1 Moderate Drought
- D2 Severe Drought
- D3 Extreme Drought
- D4 Exceptional Drought

The Drought Monitor focuses on broad-scale conditions. Local conditions may vary. For more information on the Drought Monitor, go to <https://droughtmonitor.unl.edu/About.aspx>

Author:

Curtis Riganti
National Drought Mitigation Center



droughtmonitor.unl.edu

Source: National Drought Mitigation Center, a partnership with USDA, U.S. Department of Commerce/NOAA, <http://droughtmonitor.unl.edu>