



# Texas Crop Progress and Condition

Southern Plains Regional Field Office  
Post Office Box 70 Austin, Texas 78767  
(800) 626-3142 · FAX (855) 270-2725 · www.nass.usda.gov/tx

Issue: TX-CW2122

Weekly Summary for June 6 - June 12

Released: June 13, 2022

Most of the state received from trace amounts to upwards of 1.00 inch of precipitation. Isolated areas in Northern High Plains received up to 2.00 inches. Drought conditions ranged from none to exceptionally dry with the Trans-Pecos, the Edwards Plateau, South Central Texas, and the Northern and Southern Plains being the driest. There was an average of 6.2 days suitable for fieldwork.

**Small Grains:** Harvesting throughout the Plains, the Cross Timbers, and the Blacklands; continued with low yields being reported. Many fields have been plowed while others have stored the harvest for next year's seed.

**Row Crops:** The Northern High Plains had heavy rainfall which led to some cotton and corn acres being destroyed. Other areas continue planting despite the lack of moisture.

**Fruit, Vegetable and Specialty Crops:** Pecans and watermelon are doing well in the Southern High Plains. Peanut planting is in full swing and potato harvesting continues in South Texas.

**Livestock, Range and Pasture:** In the Northern High Plains, recent rain has helped improve the fields. Topsoil and subsoil conditions were very short due to the lack of moisture. Range and pasture conditions are rated 70 percent, very poor to poor.

## Crop Progress

Stage	Percent of Acreage			
	Current Week	Previous Week	Previous Year	5 Year Average
<b>Corn</b>				
Emerged	95	94	93	94
Silked	59	50	54	51
<b>Cotton</b>				
Planted	89	82	84	84
Squaring	17	15	14	15
<b>Peanuts</b>				
Planted	84	68	64	83
<b>Rice</b>				
Emerged	95	93	93	96
<b>Sorghum</b>				
Planted	90	86	94	94
Headed	42	39	44	48
<b>Soybeans</b>				
Planted	81	72	84	-1
Emerged	65	64	71	76
Blooming	13	6	14	17
<b>Sunflowers</b>				
Planted	65	58	63	68
<b>Winter Wheat</b>				
Harvested	53	36	29	52
<b>Oats</b>				
Harvested	67	56	37	71

### Crop Condition

Crop	Percent of Acreage					Index <sup>1</sup>	
	Excellent	Good	Fair	Poor	Very Poor	2022	2021
Corn	4	21	45	19	11	56	89
Cotton	1	24	46	25	4	57	66
Peanuts	1	12	51	35	1	51	70
Rice	8	27	64	1	0	72	81
Sorghum	1	17	47	17	18	50	87
Soybeans	2	34	51	11	2	66	70
Wheat	1	4	12	23	60	21	56
Oats	1	8	13	30	48	26	49
Range and Pasture	2	9	19	36	34	32	68

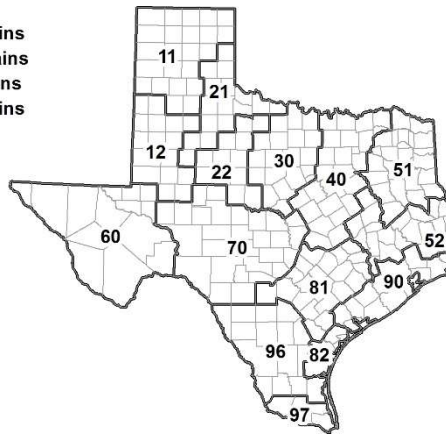
<sup>1</sup> The formula for the condition index is  $I = (5V + 25P + 60F + 90G + 110E)/100$  where I = crop condition index and V, P, F, G, E = percentage of crop rated very poor, poor, fair, good, excellent.

### Soil Moisture and Days Suitable by District

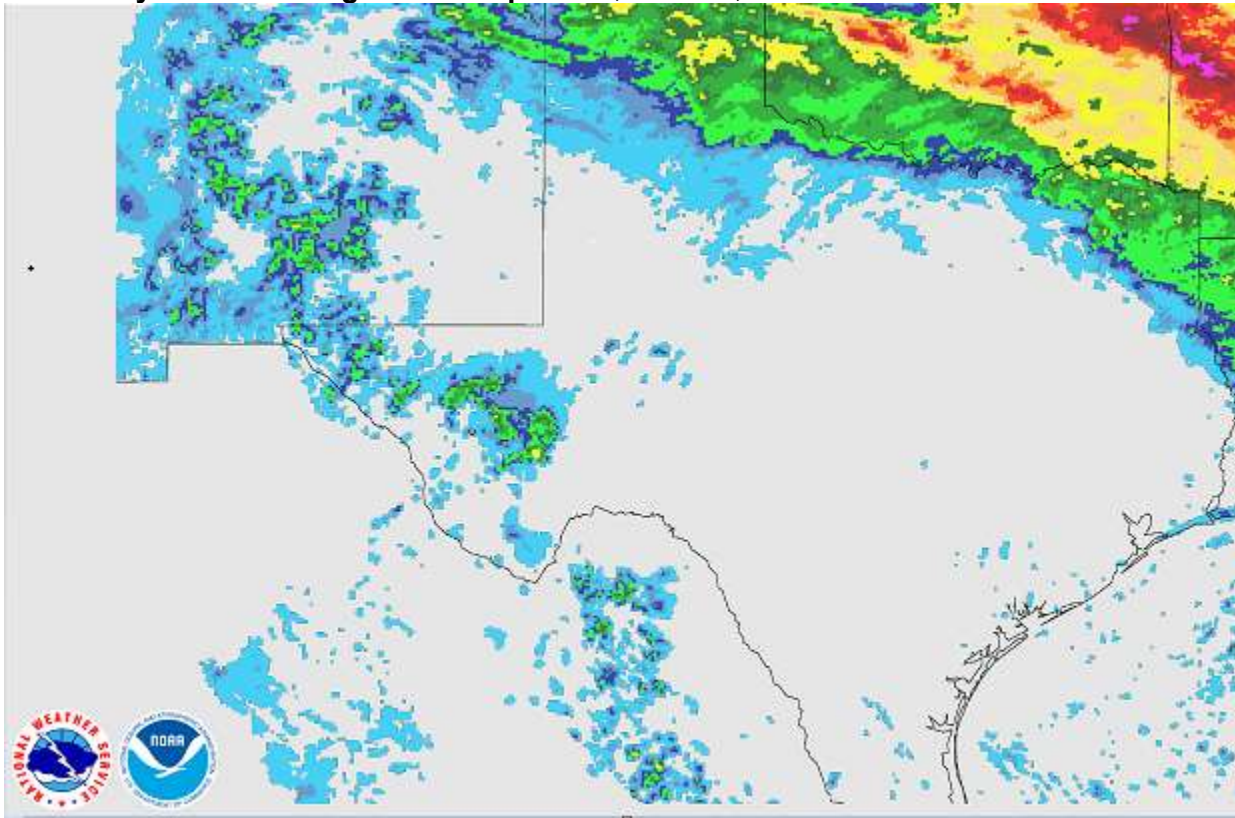
District	Topsoil Moisture Condition by District				Subsoil Moisture Condition by District				Days Suitable for Fieldwork
	Percentage of Acreage				Percentage of Acreage				
	Very Short	Short	Adequate	Surplus	Very Short	Short	Adequate	Surplus	
11	6	57	37	0	20	51	29	0	4.8
12	100	0	0	0	100	0	0	0	7.0
21	19	23	56	2	21	46	33	0	6.3
22	76	24	0	0	73	27	0	0	5.9
30	20	54	20	6	36	38	20	6	6.5
40	55	19	23	3	47	31	20	2	6.4
51	17	41	38	4	21	49	25	5	6.6
52	19	43	37	1	8	48	43	1	6.9
60	45	55	0	0	45	55	0	0	5.0
70	52	37	11	0	58	31	11	0	6.5
81	70	22	8	0	55	33	12	0	6.6
82	55	45	0	0	55	40	5	0	7.0
90	69	24	7	0	24	63	13	0	7.0
96	59	18	23	0	55	21	24	0	5.1
97	17	57	26	0	12	18	70	0	7.0
State	49	30	20	1	48	33	18	1	5.5

### Texas Agricultural Districts

- 11 Northern High Plains
- 12 Southern High Plains
- 21 Northern Low Plains
- 22 Southern Low Plains
- 30 Cross Timbers
- 40 Blacklands
- 51 North East
- 52 South East
- 60 Trans-Pecos
- 70 Edwards Plateau
- 81 South Central
- 82 Coastal Bend
- 90 Upper Coast
- 96 South
- 97 Lower Valley

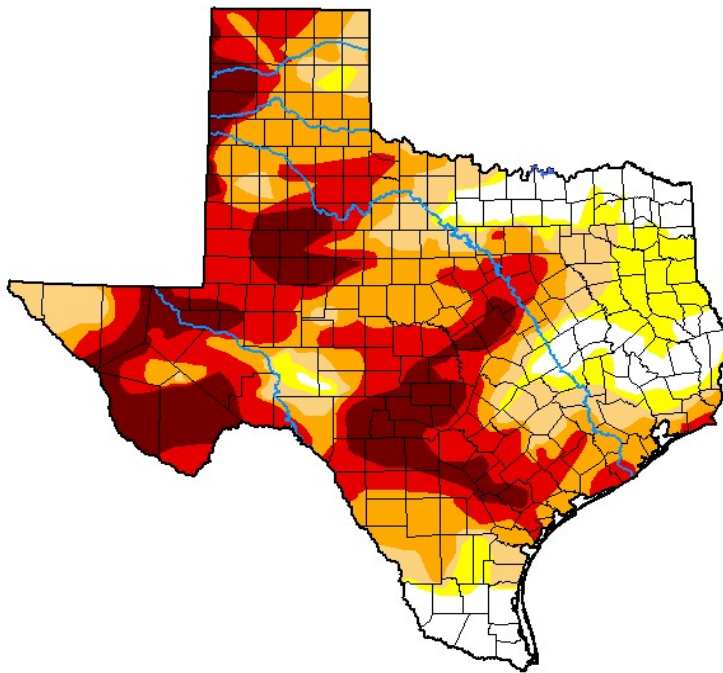


Seven Day Observed Regional Precipitation, June 12, 2022.



Source: National Weather Service, [www.nws.noaa.gov](http://www.nws.noaa.gov)

Drought Monitor, Valid June 7, 2022.



Drought Conditions (Percent Area)

	None	D0-D4	D1-D4	D2-D4	D3-D4	D4
<b>Current</b>	11.75	88.25	78.81	64.99	40.11	15.60
<b>Last Week</b> 05-31-2022	14.11	85.89	78.44	66.35	44.07	17.91
<b>3 Months Ago</b> 03-08-2022	3.95	96.05	89.93	68.43	36.38	6.39
<b>Start of Calendar Year</b> 01-04-2022	7.58	92.42	79.83	54.25	16.69	0.00
<b>Start of Water Year</b> 09-28-2021	45.57	54.43	7.26	0.27	0.00	0.00
<b>One Year Ago</b> 06-08-2021	77.24	22.76	12.57	7.71	4.47	1.16

Intensity:

- None
- D0 Abnormally Dry
- D1 Moderate Drought
- D2 Severe Drought
- D3 Extreme Drought
- D4 Exceptional Drought

The Drought Monitor focuses on broad-scale conditions. Local conditions may vary. For more information on the Drought Monitor, go to <https://droughtmonitor.unl.edu/About.aspx>

Author:

Brad Pugh  
CPC/NOAA



[droughtmonitor.unl.edu](http://droughtmonitor.unl.edu)

Source: National Drought Mitigation Center, a partnership with USDA, U.S. Department of Commerce/NOAA, <http://droughtmonitor.unl.edu>