



Texas Crop Progress and Condition

Southern Plains Regional Field Office
Post Office Box 70 Austin, Texas 78767
(800) 626-3142 · FAX (855) 270-2725 · www.nass.usda.gov/tx

Issue: TX-CW1722

Weekly Summary for May 9 - May 15

Released: May 16, 2022

Much of the state received from trace amounts to upwards of 1.50 inches of precipitation. Isolated areas in the Northern Plains, the Cross Timbers, and the Edwards Plateau received up to 3.00 inches. Drought conditions ranged from none to exceptionally dry with the Trans-Pecos, the Edwards Plateau, South Texas, and the Northern and Southern Plains being the driest. There was an average of 6.3 days suitable for fieldwork.

Small Grains: Winter wheat producers received little rain in the Northern and Southern High Plains and continue to irrigate. Some producers in the Northern Low Plains abandoned their wheat plantings. In the Blacklands and the Edwards Plateau, wheat continued to dry down while some producers neared closer towards harvest.

Row Crops: Some cotton producers in the High and Low Plains received enough moisture to begin planting and more would be needed in the coming days. Cotton plantings continued to progress in areas of the Blacklands and the Trans-Pecos, while some producers would start planting next week. Corn continued to progress in North East Texas, the Cross Timbers, and the Blacklands. However, corn plantings in the Edwards Plateau and South Central Texas struggled with the heat and lack of moisture.

Fruit, Vegetable and Specialty Crops: Pecan trees progressed in some areas of the Southern High Plains and the Trans-Pecos, while producers continued to spray insecticides in areas of South Central Texas. Vegetable plantings looked good in areas of North East Texas where potato harvest continued. Melon harvest in North East Texas would occur in the next few weeks.

Livestock, Range and Pasture: Supplemental feeding continued across the state. Flies continued to be a problem in areas of the Blacklands. Feral hogs continued to be nuisance to some producers in North East Texas. Topsoil and subsoil conditions were very short due to the lack of moisture. Range and pasture conditions are rated 74 percent, very poor to poor.

Crop Progress

Stage	Percent of Acreage			
	Current Week	Previous Week	Previous Year	5 Year Average
Corn				
Planted	87	81	85	84
Emerged	74	63	70	72
Silking	11	NA	15	15
Cotton				
Planted	30	22	34	33
Peanuts				
Planted	28	5	11	28
Rice				
Planted	92	88	95	90
Emerged	82	76	81	83
Sorghum				
Planted	73	70	72	78
Headed	13	11	22	18
Soybeans				
Planted	62	54	59	65
Emerged	35	28	29	NA
Sunflowers				
Planted	20	NA	NA	NA
Winter Wheat				
Headed	86	76	90	90
Harvested	7	1	9	8
Oats				
Headed	97	92	99	98
Harvested	15	1	11	10

Crop Condition

Crop	Percent of Acreage					Index ¹	
	Excellent	Good	Fair	Poor	Very Poor	2022	2021
Sorghum	1	10	48	25	16	46	77
Corn	6	21	47	18	8	59	86
Wheat	0	5	14	16	65	20	53
Oats	0	7	12	28	53	23	59
Range and Pasture	2	8	16	26	48	28	52

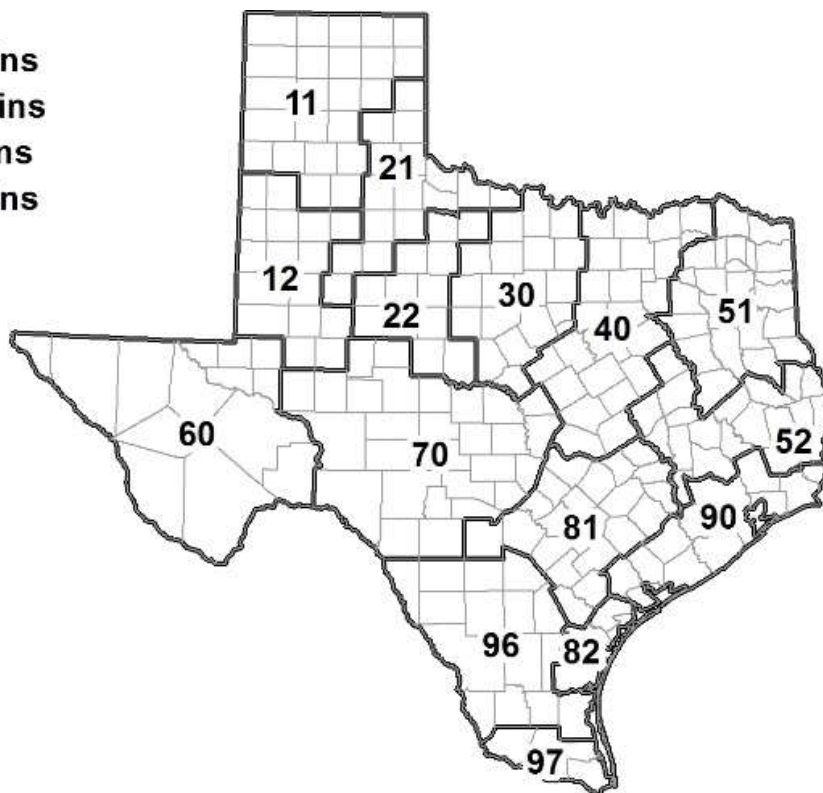
¹ The formula for the condition index is $I = (5V + 25P + 60F + 90G + 110E)/100$ where I = crop condition index and V, P, F, G, E = percentage of crop rated very poor, poor, fair, good, excellent.

Soil Moisture and Days Suitable by District

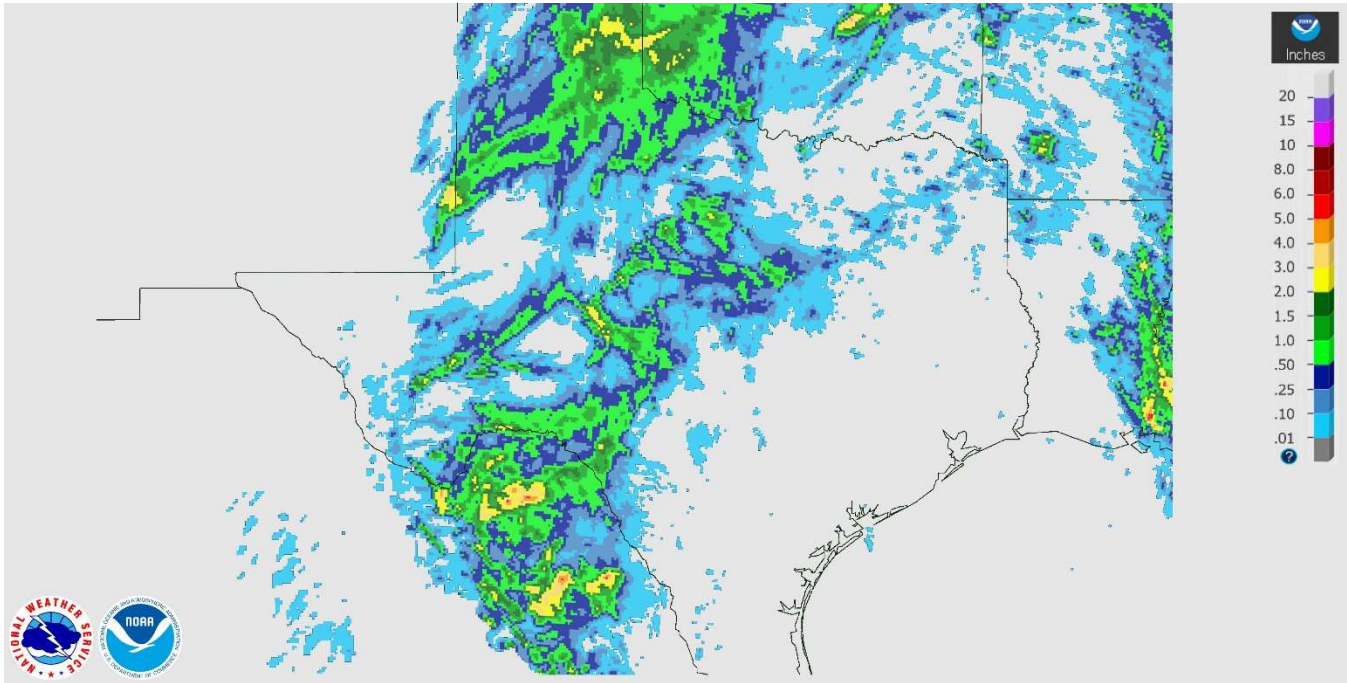
District	Topsoil Moisture Condition by District				Subsoil Moisture Condition by District				Days Suitable for Fieldwork
	Percentage of Acreage				Percentage of Acreage				
	Very Short	Short	Adequate	Surplus	Very Short	Short	Adequate	Surplus	
11	86	13	1	0	75	21	4	0	5.3
12	97	3	0	0	97	3	0	0	6.5
21	46	53	1	0	49	50	1	0	6.3
22	62	38	0	0	62	38	0	0	6.8
30	30	40	30	0	27	52	17	4	6.1
40	22	36	40	2	27	26	46	1	6.4
51	4	40	52	4	4	37	55	4	6.6
52	0	29	61	10	0	39	51	10	6.9
60	47	17	36	0	47	17	36	0	6.3
70	83	13	4	0	82	14	4	0	6.8
81	22	67	11	0	31	64	5	0	6.5
82	68	29	3	0	69	31	0	0	7.0
90	35	47	18	0	43	46	10	1	7.0
96	53	32	15	0	61	20	19	0	6.4
97	22	32	46	0	33	47	20	0	6.5
State	57	28	14	1	58	28	13	1	6.3

Texas Agricultural Districts

- 11 Northern High Plains
- 12 Southern High Plains
- 21 Northern Low Plains
- 22 Southern Low Plains
- 30 Cross Timbers
- 40 Blacklands
- 51 North East
- 52 South East
- 60 Trans-Pecos
- 70 Edwards Plateau
- 81 South Central
- 82 Coastal Bend
- 90 Upper Coast
- 96 South
- 97 Lower Valley

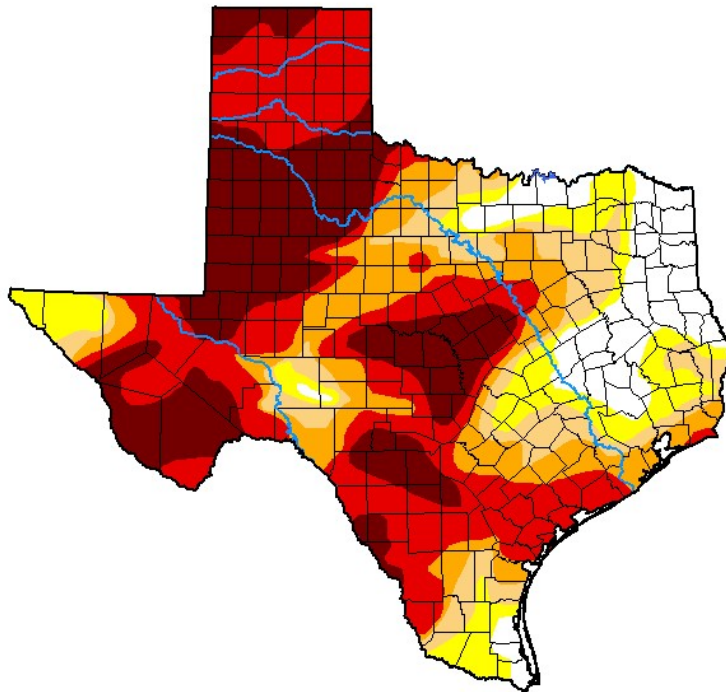


Seven Day Observed Regional Precipitation, May 15, 2022.



Source: National Weather Service, www.nws.noaa.gov

Drought Monitor, Valid May 10, 2022.



Drought Conditions (Percent Area)

	None	D0-D4	D1-D4	D2-D4	D3-D4	D4
Current	10.54	89.46	79.23	68.09	52.96	24.53
Last Week 05-03-2022	8.83	91.17	80.02	67.29	50.91	23.19
3 Months Ago 02-08-2022	11.83	88.17	78.09	55.02	23.88	0.00
Start of Calendar Year 01-04-2022	7.58	92.42	79.83	54.25	16.69	0.00
Start of Water Year 09-28-2021	45.57	54.43	7.26	0.27	0.00	0.00
One Year Ago 05-11-2021	34.32	65.68	44.28	27.69	16.88	7.85

Intensity:

- None
- D0 Abnormally Dry
- D1 Moderate Drought
- D2 Severe Drought
- D3 Extreme Drought
- D4 Exceptional Drought

The Drought Monitor focuses on broad-scale conditions. Local conditions may vary. For more information on the Drought Monitor, go to <https://droughtmonitor.unl.edu/About.aspx>

Author:

David Simeral
Western Regional Climate Center



droughtmonitor.unl.edu

Source: National Drought Mitigation Center, a partnership with USDA, U.S. Department of Commerce/NOAA, <http://droughtmonitor.unl.edu>

Texas Crop Progress and Condition (May 2022)

USDA, National Agricultural Statistics Service, Southern Plains Regional Field Office