



# Texas Crop Progress and Condition

Southern Plains Regional Field Office  
Post Office Box 70 Austin, Texas 78767  
(800) 626-3142 · FAX (855) 270-2725 · [www.nass.usda.gov/tx](http://www.nass.usda.gov/tx)

**Issue: TX-CW1422**

**Weekly Summary for April 18 - April 24**

**Released: April 25, 2022**

Much of the state received from trace amounts to upwards of 2.00 inches of precipitation. Isolated areas in the Cross Timbers and the Blacklands received up to 5.00 inches. Drought conditions ranged from none to exceptionally dry with the Northern and Southern Plains, the Blacklands, and South Texas being the driest. There was an average of 6.3 days suitable for fieldwork.

**Small Grains:** Winter wheat continued to struggle throughout most of the state. Irrigated wheat was doing well in the Northern and Southern High Plains. While the majority of the wheat crop is used for grazing in the Cross Timbers, wheat is starting to head out for those farmers trying to harvest the crop for grain.

**Row Crops:** In the Blacklands, corn has begun to emerge, and irrigation has started for cotton in the Edwards Plateau. Sorghum fields are in need of moisture. Rice planting continues in the Upper Coast.

**Fruit, Vegetable and Specialty Crops:** In the Lower Valley, onion harvesting continues while the citrus harvest has been completed. In South Texas, strawberry producers are picking at a feverish pace with fruit coming off fast.

**Livestock, Range and Pasture:** Supplemental feeding continued across the state. Topsoil and subsoil conditions were very short due to the lack of moisture. In areas of North East Texas, windy conditions are drying out pastures. Range and pasture conditions are rated 75 percent, very poor to poor.

## Crop Progress

Stage	Percent of Acreage			
	Current Week	Previous Week	Previous Year	5 Year Average
<b>Corn</b>				
Planted	69	64	65	66
Emerged	59	49	54	53
<b>Cotton</b>				
Planted	19	16	17	15
<b>Rice</b>				
Planted	77	73	84	77
Emerged	61	43	67	64
<b>Sorghum</b>				
Planted	63	57	63	67
<b>Soybeans</b>				
Planted	27	4	24	26
<b>Winter Wheat</b>				
Headed	45	30	55	60
<b>Oats</b>				
Headed	74	57	71	74

### Crop Condition

Crop	Percent of Acreage					Index <sup>1</sup>	
	Excellent	Good	Fair	Poor	Very Poor	2022	2021
Corn	6	20	63	8	3	65	68
Wheat	0	8	14	21	57	24	47
Oats	0	7	10	18	65	20	42
Range and Pasture	1	6	18	28	47	27	37

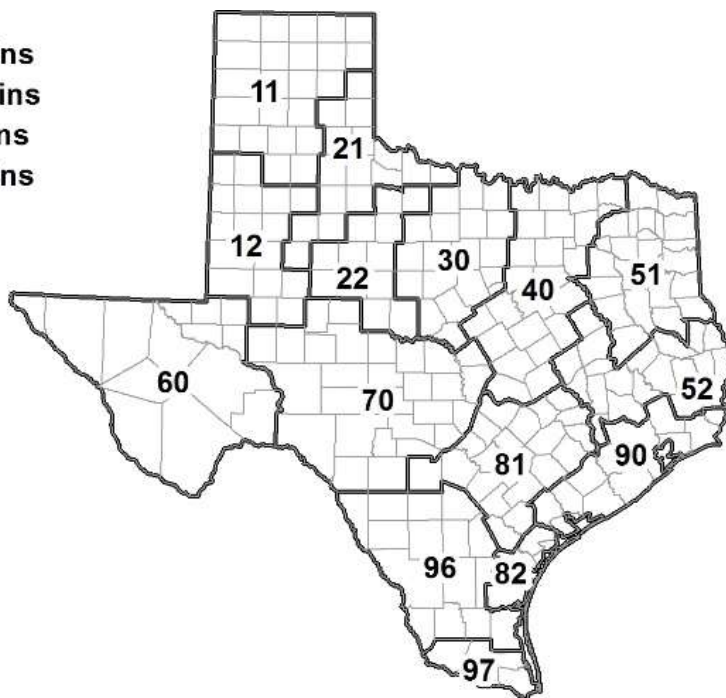
<sup>1</sup> The formula for the condition index is  $I = (5V + 25P + 60F + 90G + 110E)/100$  where I = crop condition index and V, P, F, G, E = percentage of crop rated very poor, poor, fair, good, excellent.

### Soil Moisture and Days Suitable by District

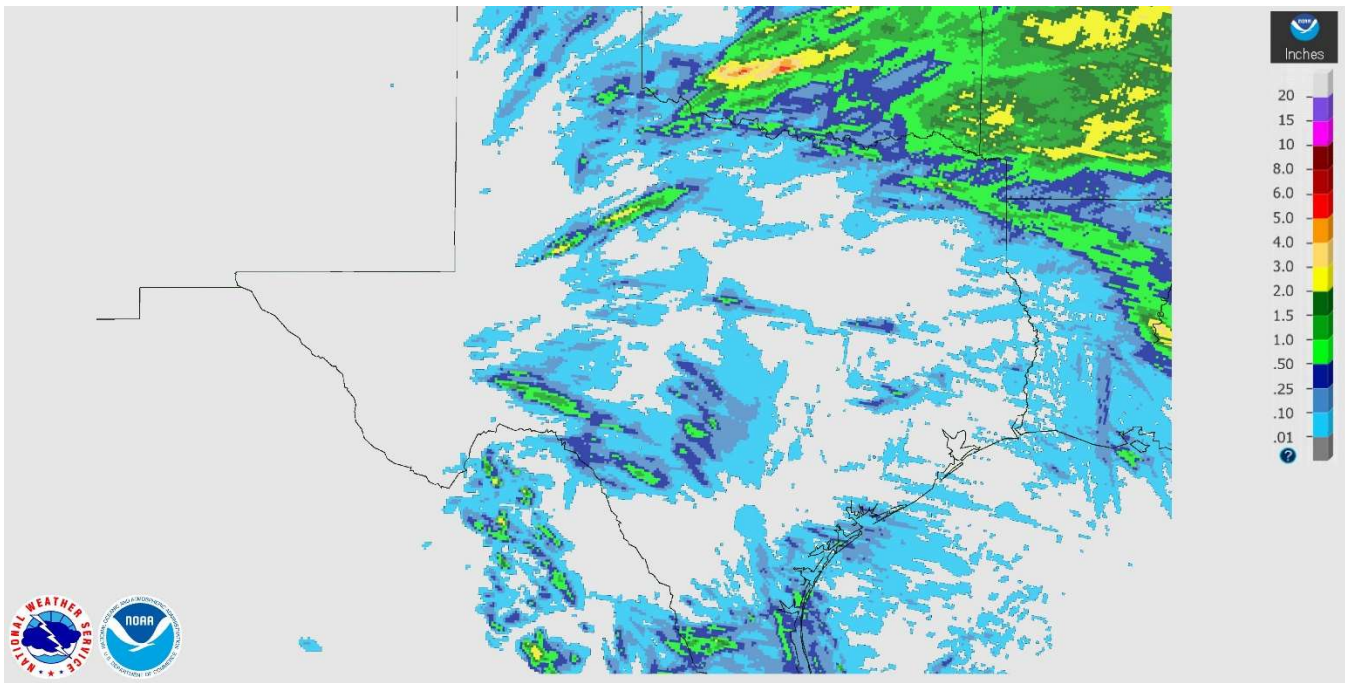
District	Topsoil Moisture Condition by District				Subsoil Moisture Condition by District				Days Suitable for Fieldwork
	Percentage of Acreage				Percentage of Acreage				
	Very Short	Short	Adequate	Surplus	Very Short	Short	Adequate	Surplus	
11	93	7	0	0	90	10	0	0	6.1
12	78	21	1	0	81	19	0	0	6.6
21	54	46	0	0	54	46	0	0	6.9
22	84	9	7	0	78	18	4	0	6.2
30	34	42	20	4	30	46	20	4	6.2
40	27	25	34	14	31	29	38	2	5.8
51	4	35	59	2	0	35	64	1	6.0
52	11	65	23	1	8	57	35	0	6.9
60	47	47	6	0	45	51	4	0	6.5
70	89	7	3	1	78	19	2	1	6.3
81	11	52	37	0	9	44	47	0	6.5
82	53	43	4	0	48	44	8	0	7.0
90	26	59	14	1	18	41	40	1	7.0
96	86	12	3	0	49	48	3	0	5.7
97	50	46	4	0	30	43	27	0	5.8
State	60	26	12	2	56	28	15	1	6.3

### Texas Agricultural Districts

- 11 Northern High Plains
- 12 Southern High Plains
- 21 Northern Low Plains
- 22 Southern Low Plains
- 30 Cross Timbers
- 40 Blacklands
- 51 North East
- 52 South East
- 60 Trans-Pecos
- 70 Edwards Plateau
- 81 South Central
- 82 Coastal Bend
- 90 Upper Coast
- 96 South
- 97 Lower Valley

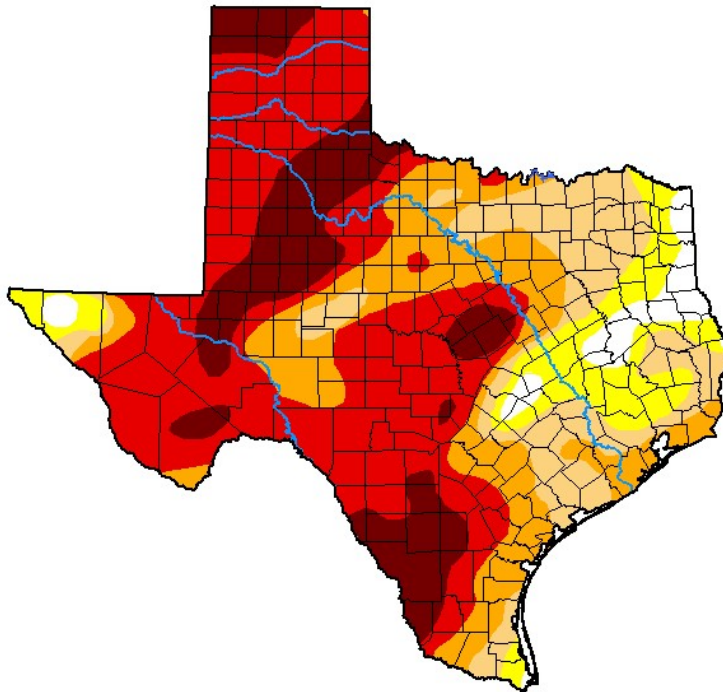


# Seven Day Observed Regional Precipitation, April 24, 2022



Source: National Weather Service, [www.nws.noaa.gov](http://www.nws.noaa.gov)

## Drought Monitor, Valid April 19, 2022.



Drought Conditions (Percent Area)

	None	D0-D4	D1-D4	D2-D4	D3-D4	D4
<b>Current</b>	3.87	96.13	87.38	72.46	53.54	15.91
<b>Last Week</b> 04-12-2022	2.87	97.13	87.66	74.12	49.11	14.20
<b>3 Months Ago</b> 01-18-2022	3.53	96.47	86.04	64.67	25.87	0.00
<b>Start of Calendar Year</b> 01-04-2022	7.58	92.42	79.83	54.25	16.69	0.00
<b>Start of Water Year</b> 09-28-2021	45.57	54.43	7.26	0.27	0.00	0.00
<b>One Year Ago</b> 04-20-2021	12.43	87.57	67.10	37.55	24.06	8.95

Intensity:

- None
- D0 Abnormally Dry
- D1 Moderate Drought
- D2 Severe Drought
- D3 Extreme Drought
- D4 Exceptional Drought

The Drought Monitor focuses on broad-scale conditions. Local conditions may vary. For more information on the Drought Monitor, go to <https://droughtmonitor.unl.edu/About.aspx>

Author:

Brad Rippey  
U.S. Department of Agriculture



[droughtmonitor.unl.edu](http://droughtmonitor.unl.edu)

Source: National Drought Mitigation Center, a partnership with USDA, U.S. Department of Commerce/NOAA, <http://droughtmonitor.unl.edu>