



Texas Crop Progress and Condition

Southern Plains Regional Field Office
Post Office Box 70 Austin, Texas 78767
(800) 626-3142 · FAX (855) 270-2725 · www.nass.usda.gov/tx

Issue: TX-CW1122

Weekly Summary for March 28 - April 3

Released: April 4, 2022

Parts of the state received from trace amounts to upwards of 0.50 inches of precipitation. Isolated areas in the Blacklands and East Texas received up to 2.00 inches. Drought conditions range from none to exceptionally dry with the Northern and Southern Plains, the Blacklands, and South Texas being the driest. There was an average of 5.9 days suitable for fieldwork.

Small Grains: Winter wheat continued to improve slightly in the Blacklands and the Cross Timbers. While irrigated wheat was reported as doing as well as expected, the dry land crop around the state is in need of a beneficial rain.

Row Crops: Corn planting had begun in the Southern High Plains, continued in the Northern Low Plains, and was nearing completion in the Blacklands and South Central Texas. Sorghum planting was progressing in some areas of the state, while others were waiting for more moisture. Field work was underway throughout the northern part of the state in preparation for cotton planting. Meanwhile, cotton planting was progressing in South Central Texas, the Upper Coast, and the Lower Valley. Rice producers in the Upper Coast made good progress in planting the crop compared to the previous week.

Fruit, Vegetable and Specialty Crops: Watermelon producers in the Southern High Plains were preparing for planting. Meanwhile, watermelon planting was underway in North East Texas. Pecans in the Trans-Pecos were being irrigated. Vegetable planting continued in South Central Texas and South Texas. Citrus, sugarcane, leafy greens, and onion harvest in the Lower Valley progressed.

Livestock, Range and Pasture: Feral hog control efforts continue in North East Texas. Supplemental feeding continued across the state. Topsoil and subsoil conditions are very short due to the lack of moisture. Range and pasture conditions continue to decline, especially in the Edwards Plateau and Coastal Bend. Range and pasture condition was rated 77 percent very poor to poor.

Crop Progress

Stage	Percent of Acreage			
	Current Week	Previous Week	Previous Year	5 Year Average
Corn				
Planted	54	51	54	55
Emerged	21	(NA)	28	28
Cotton				
Planted	6	(NA)	9	9
Rice				
Planted	43	25	56	50
Emerged	12	(NA)	30	22
Sorghum				
Planted	43	39	46	47
Winter Wheat				
Headed	23	21	25	22
Oats				
Headed	33	23	29	27

(NA) Not available.

Crop Condition

Crop	Percent of Acreage					Index ¹	
	Excellent	Good	Fair	Poor	Very Poor	2022	2021
Wheat	0	7	12	24	57	22	58
Oats	0	6	10	27	57	21	44
Range and Pasture	1	5	17	34	43	26	42

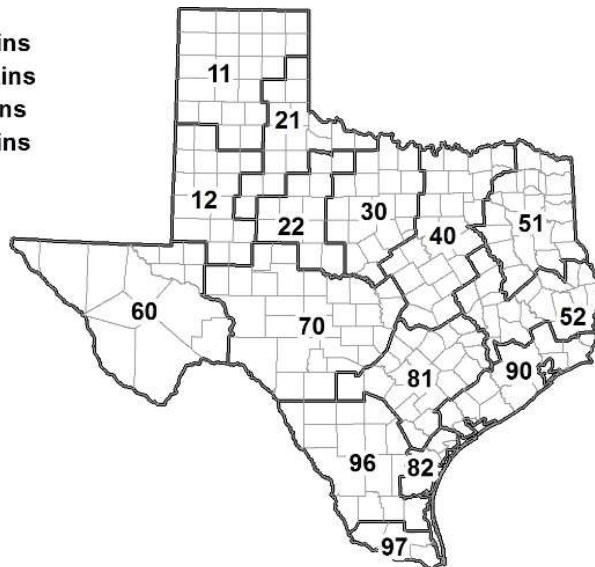
¹ The formula for the condition index is $I = (5V + 25P + 60F + 90G + 110E)/100$ where I = crop condition index and V, P, F, G, E = percentage of crop rated very poor, poor, fair, good, excellent.

Soil Moisture and Days Suitable by District

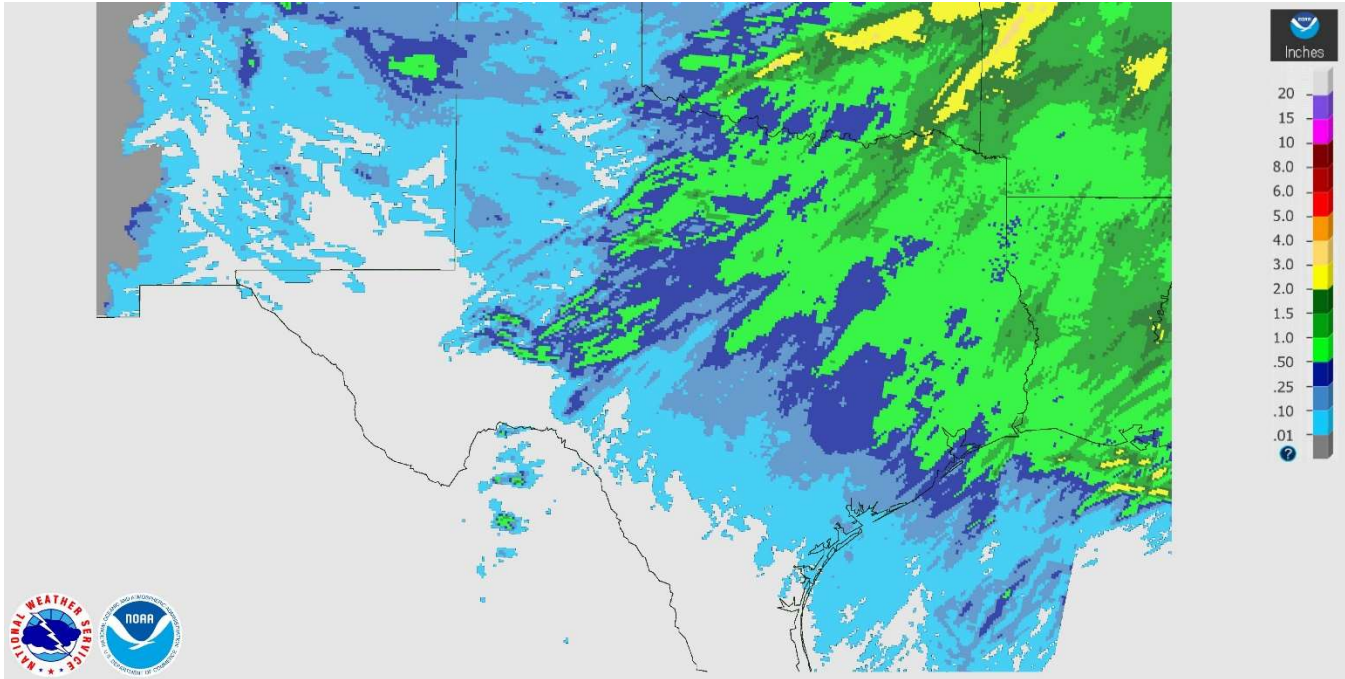
District	Topsoil Moisture Condition by District				Subsoil Moisture Condition by District				Days Suitable for Fieldwork
	Percentage of Acreage				Percentage of Acreage				
	Very Short	Short	Adequate	Surplus	Very Short	Short	Adequate	Surplus	
11	76	14	10	0	86	14	0	0	6.1
12	53	43	4	0	55	38	7	0	5.9
21	46	53	1	0	50	48	2	0	5.4
22	91	9	0	0	76	24	0	0	6.5
30	29	57	10	4	39	46	15	0	6.0
40	21	27	52	0	26	29	44	1	5.2
51	8	29	54	9	7	30	61	2	6.4
52	1	29	52	18	1	30	59	10	6.3
60	29	40	31	0	30	43	27	0	6.4
70	82	17	1	0	82	17	1	0	6.4
81	21	45	34	0	14	53	31	2	6.0
82	41	35	24	0	36	44	20	0	7.0
90	6	39	52	3	6	20	69	5	6.1
96	81	14	5	0	44	51	5	0	5.6
97	70	30	0	0	14	28	58	0	5.4
State	50	30	19	1	49	31	19	1	5.9

Texas Agricultural Districts

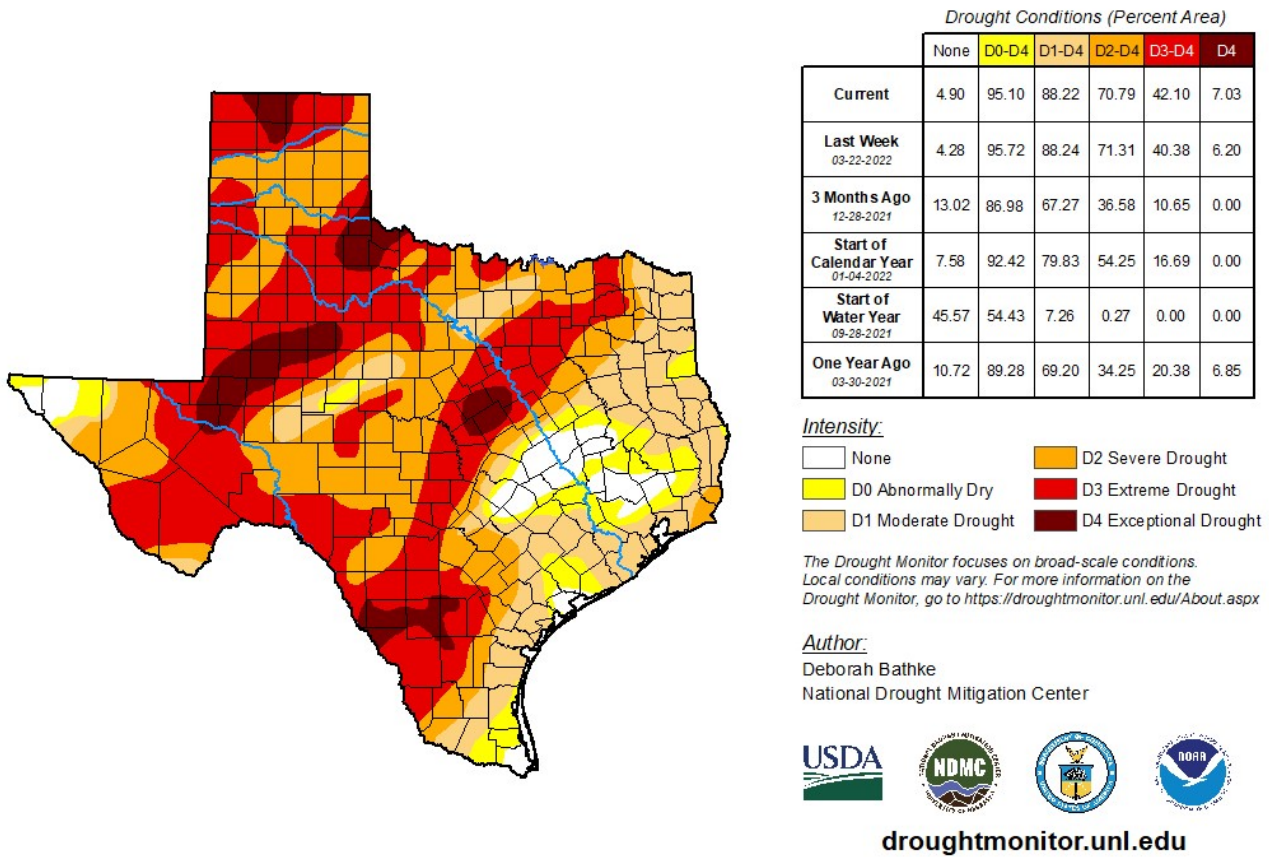
- 11 Northern High Plains
- 12 Southern High Plains
- 21 Northern Low Plains
- 22 Southern Low Plains
- 30 Cross Timbers
- 40 Blacklands
- 51 North East
- 52 South East
- 60 Trans-Pecos
- 70 Edwards Plateau
- 81 South Central
- 82 Coastal Bend
- 90 Upper Coast
- 96 South
- 97 Lower Valley



Seven Day Observed Regional Precipitation, April 3, 2022



Drought Monitor, Valid March 29, 2022.



Source: National Drought Mitigation Center, a partnership with USDA, U.S. Department of Commerce/NOAA, <http://droughtmonitor.unl.edu>.