



Texas Crop Progress and Condition

Southern Plains Regional Field Office
Post Office Box 70 Austin, Texas 78767
(800) 626-3142 · FAX (855) 270-2725 · www.nass.usda.gov/tx

Issue: TX-CW0922

Weekly Summary for March 14 – March 20

Released: March 21, 2022

Parts of the state received from trace amounts to upwards of 0.50 of an inch of precipitation. Isolated areas in the Northeast Texas received up to 2.00 inches. Drought conditions range from none to exceptionally dry with the Northern and Southern High Plains being the driest. There was an average of 6.0 days suitable for fieldwork.

Small Grains: Winter wheat conditions continue to deteriorate in the High Plains but are improving in the Blacklands.

Row Crops: In the Blacklands, corn and sorghum planting are progressing well and both are starting to sprout in the South Central and Upper Coast areas.

Fruit, Vegetable and Specialty Crops: In the Southeast area, vegetable planting is in various stages, while harvesting continues in the Lower Valley.

Livestock, Range and Pasture: Supplemental feeding continued across the state. Topsoil and subsoil conditions are very short due to the lack of moisture. Range and pasture conditions continue to decline, especially for the Northern and Southern Plains areas. Range and pasture condition was rated 75 percent very poor to poor.

Crop Progress

Stage	Percent of Acreage			
	Current Week	Previous Week	Previous Year	5 Year Average
Corn				
Planted	42	27	37	35
Sorghum				
Planted	30	18	33	29
Winter Wheat				
Headed	18	17	12	9
Oats				
Headed	20	17	14	11

(NA) Not available.

Crop Condition

Crop	Percent of Acreage					Index ¹	
	Excellent	Good	Fair	Poor	Very Poor	2022	2021
Wheat	0	6	15	21	58	23	58
Oats	0	8	17	17	58	25	38
Range and Pasture	0	5	20	34	41	27	43

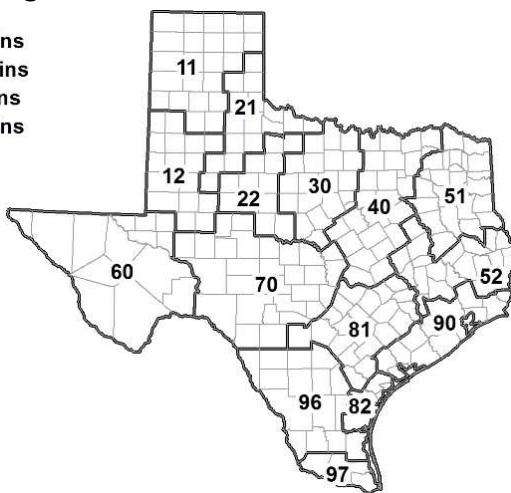
¹ The formula for the condition index is $I = (5V + 25P + 60F + 90G + 110E)/100$ where I = crop condition index and V, P, F, G, E = percentage of crop rated very poor, poor, fair, good, excellent.

Soil Moisture and Days Suitable by District

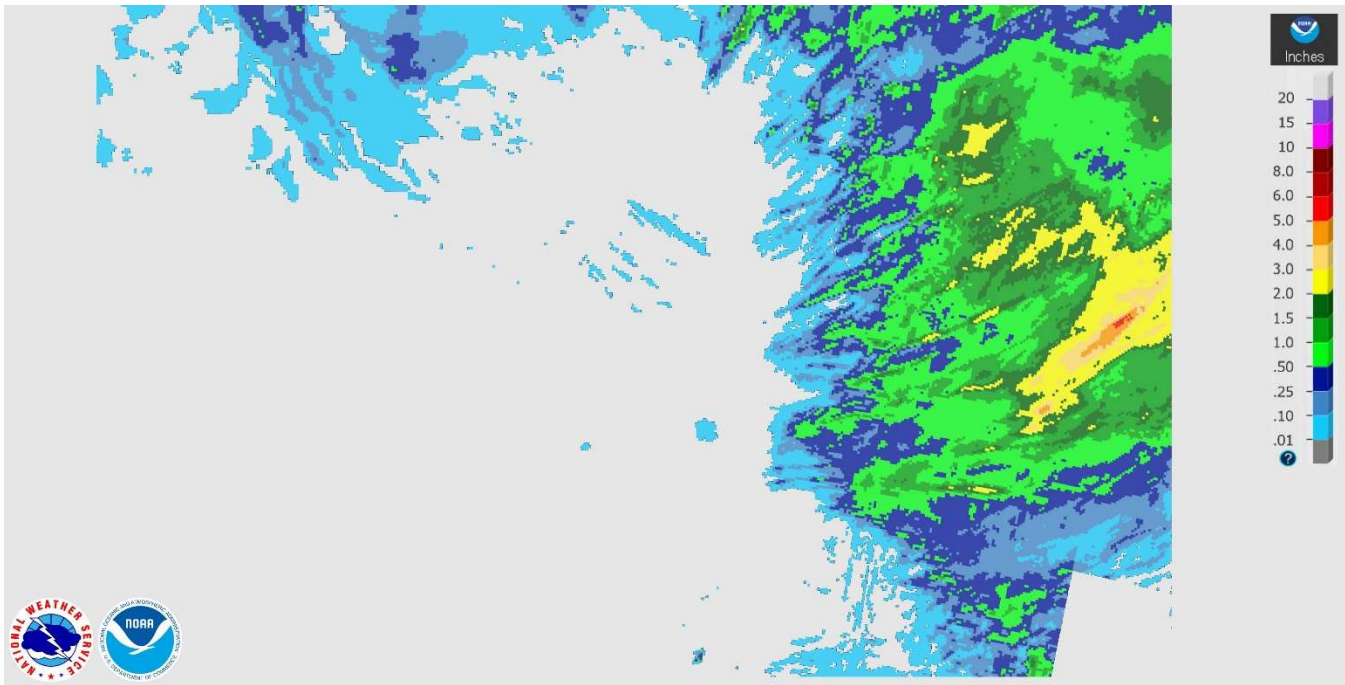
District	Topsoil Moisture Condition by District				Subsoil Moisture Condition by District				Days Suitable for Fieldwork
	Percentage of Acreage				Percentage of Acreage				
	Very Short	Short	Adequate	Surplus	Very Short	Short	Adequate	Surplus	
11	89	11	0	0	87	13	0	0	6.2
12	48	43	9	0	48	47	5	0	5.6
21	40	56	4	0	53	46	1	0	6.1
22	100	0	0	0	75	25	0	0	6.0
30	51	38	11	0	63	28	9	0	6.3
40	38	30	32	0	37	34	29	0	6.1
51	10	58	29	3	10	67	23	0	6.2
52	1	31	52	16	1	35	56	8	6.2
60	28	38	34	0	28	43	29	0	5.9
70	83	17	0	0	79	19	2	0	6.6
81	24	67	9	0	18	58	24	0	6.5
82	100	0	0	0	90	10	0	0	7.0
90	7	35	44	14	3	14	67	16	3.4
96	62	27	11	0	25	67	8	0	6.3
97	100	0	0	0	10	18	72	0	6.0
State	58	29	12	1	52	33	14	1	6.0

Texas Agricultural Districts

- 11 Northern High Plains
- 12 Southern High Plains
- 21 Northern Low Plains
- 22 Southern Low Plains
- 30 Cross Timbers
- 40 Blacklands
- 51 North East
- 52 South East
- 60 Trans-Pecos
- 70 Edwards Plateau
- 81 South Central
- 82 Coastal Bend
- 90 Upper Coast
- 96 South
- 97 Lower Valley

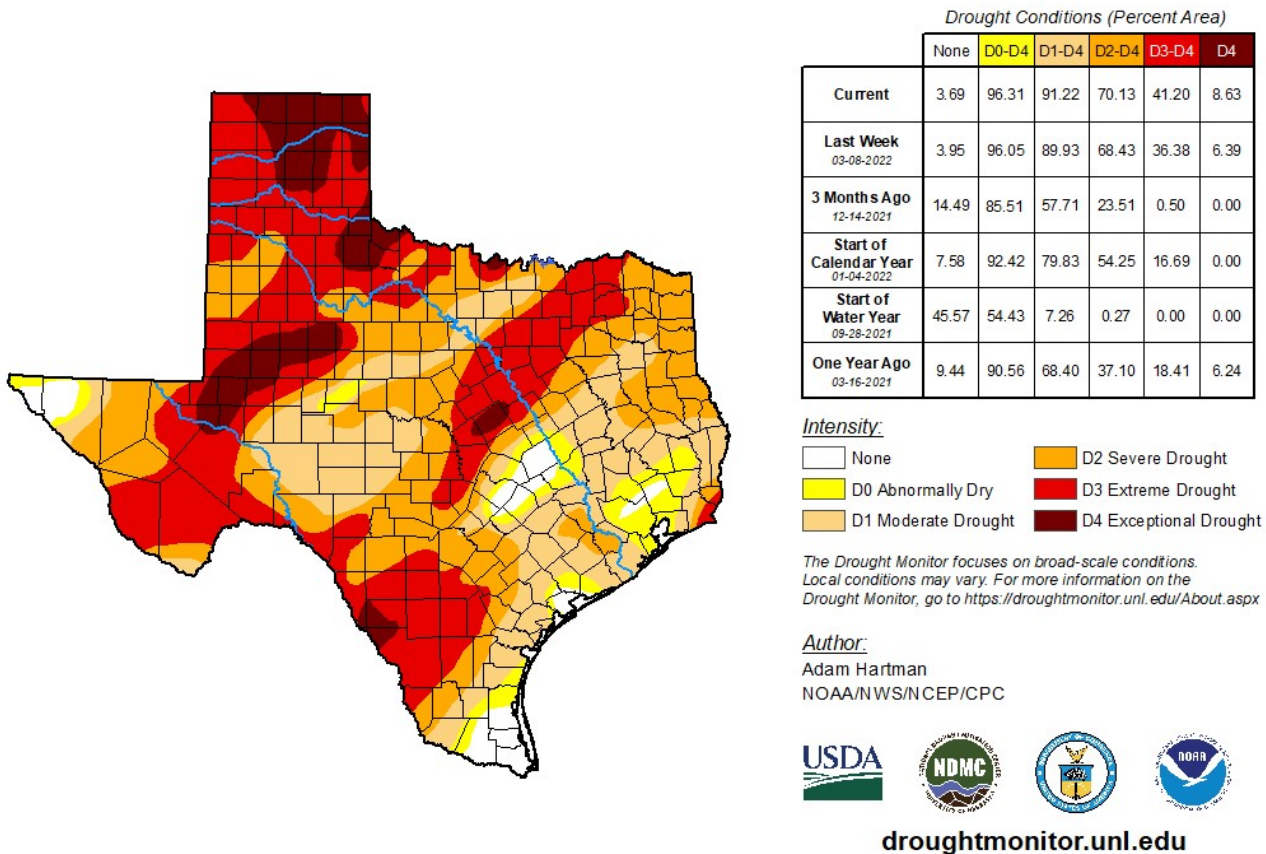


Seven Day Observed Regional Precipitation, March 20, 2022



Source: National Weather Service, www.nws.noaa.gov

Drought Monitor, Valid March 15, 2022.



Source: National Drought Mitigation Center, a partnership with USDA, U.S. Department of Commerce/NOAA, <http://droughtmonitor.unl.edu>