



Texas Crop Progress and Condition

Southern Plains Regional Field Office
Post Office Box 70 Austin, Texas 78767
(800) 626-3142 · FAX (855) 270-2725 · www.nass.usda.gov/tx

Issue: TX-CW4521

Weekly Summary for November 22-November 28

Released: November 29

Note: This is the final weekly Crop Progress and Condition report for the 2021 season.

Most of the state received from trace amounts to upwards of 4.0 inches of precipitation. Areas of the Coastal Bend and the Upper Coast received up to 6.0 inches. First frost of the year was reported in areas of South East Texas and some low-lying areas of the Edwards Plateau. There was an average of 5.9 days suitable for fieldwork.

Small Grains: Winter wheat was still in need of rain in most areas of the High and Low Plains. Although areas of the Cross Timbers, the Blacklands, and the Edwards Plateau received rain, winter wheat was in need of more moisture. Winter wheat emerged reached 83 percent, up 3 points from the previous year and normal. Oats emerged reached 90 percent, up 4 points from the previous year and normal.

Row Crops: Cotton harvest was in full swing in the High and Low Plains. Cotton harvested reached 82 percent, up 1 point from the previous year and up 13 points from normal. Peanut harvest was complete in areas of the Lower Valley. Peanuts harvested reached 88 percent, down 1 point from the previous year but unchanged from normal.

Fruit, Vegetable and Specialty Crops: Pecan harvest continued in areas of South Central Texas as weather allowed. Vegetable planting in the Lower Valley was delayed due to moisture but field prep work continued in areas that drained well.

Livestock, Range and Pasture: Supplemental feeding continued across the state. Pastures and pond levels were reported as low in areas of the Cross Timbers, the Blacklands, North East Texas, and South Texas. Moisture was still needed in many areas. Range and pasture condition was rated mostly fair.

Crop Progress

| Stage | Percent of Acreage | | | |
|---------------------|--------------------|---------------|---------------|----------------|
| | Current Week | Previous Week | Previous Year | 5 Year Average |
| Cotton | | | | |
| Harvested | 82 | 70 | 81 | 69 |
| Peanuts | | | | |
| Mature | 95 | 85 | 95 | 89 |
| Harvested | 88 | 79 | 89 | 88 |
| Winter Wheat | | | | |
| Planted | 96 | 93 | 95 | 92 |
| Emerged | 83 | 75 | 80 | 80 |
| Oats | | | | |
| Emerged | 90 | 84 | 86 | 86 |

(NA) Not available.

Crop Condition

| Crop | Percent of Acreage | | | | | Index ¹ | |
|-------------------|--------------------|------|------|------|-----------|--------------------|------|
| | Excellent | Good | Fair | Poor | Very Poor | 2021 | 2020 |
| Cotton | 15 | 43 | 37 | 4 | 1 | 78 | 47 |
| Peanuts | 18 | 58 | 23 | 1 | 0 | 86 | 70 |
| Wheat | 5 | 15 | 35 | 27 | 18 | 48 | 58 |
| Oats | 3 | 18 | 43 | 26 | 10 | 52 | 53 |
| Range and Pasture | 3 | 23 | 37 | 23 | 14 | - | - |

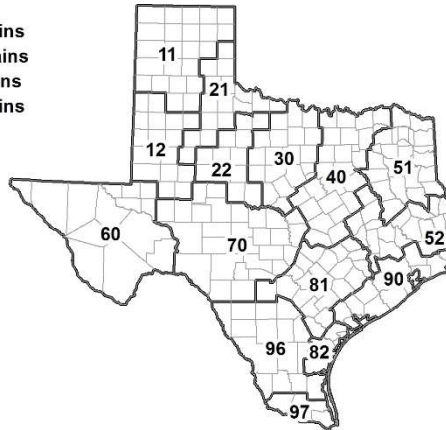
¹ The formula for the condition index is $I = (5V + 25P + 60F + 90G + 110E)/100$ where I = crop condition index and V, P, F, G, E = percentage of crop rated very poor, poor, fair, good, excellent.

Soil Moisture and Days Suitable by District

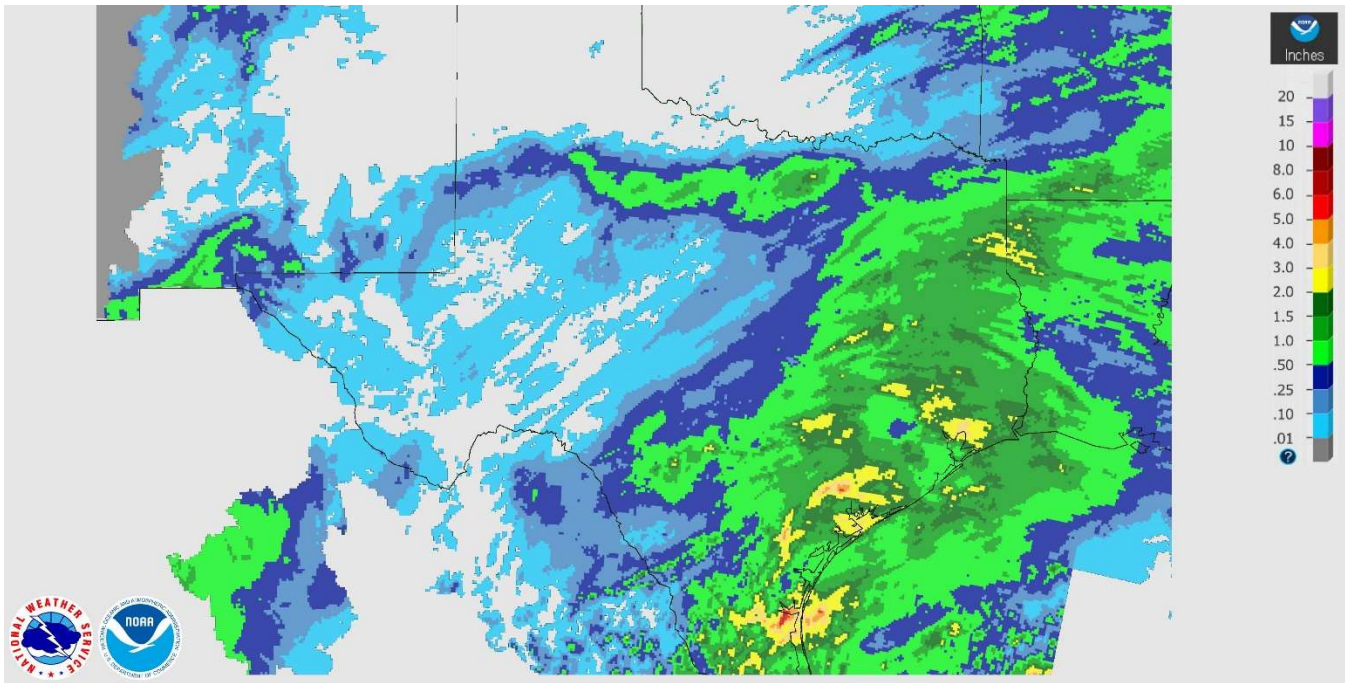
| District | Topsoil Moisture Condition by District | | | | Subsoil Moisture Condition by District | | | | Days Suitable for Fieldwork |
|----------|--|-------|----------|---------|--|-------|----------|---------|-----------------------------|
| | Percentage of Acreage | | | | Percentage of Acreage | | | | |
| | Very Short | Short | Adequate | Surplus | Very Short | Short | Adequate | Surplus | |
| 11 | 41 | 35 | 24 | 0 | 23 | 61 | 16 | 0 | 6.8 |
| 12 | 3 | 94 | 3 | 0 | 3 | 94 | 3 | 0 | 5.5 |
| 21 | 25 | 55 | 20 | 0 | 25 | 53 | 22 | 0 | 6.3 |
| 22 | 53 | 25 | 22 | 0 | 42 | 42 | 15 | 1 | 6.3 |
| 30 | 7 | 48 | 42 | 3 | 6 | 45 | 46 | 3 | 6.0 |
| 40 | 13 | 28 | 55 | 4 | 13 | 28 | 57 | 2 | 5.7 |
| 51 | 22 | 36 | 39 | 3 | 24 | 42 | 32 | 2 | 6.3 |
| 52 | 1 | 39 | 48 | 12 | 1 | 38 | 49 | 12 | 5.8 |
| 60 | 28 | 49 | 23 | 0 | 22 | 53 | 25 | 0 | 6.0 |
| 70 | 34 | 44 | 21 | 1 | 35 | 42 | 22 | 1 | 6.7 |
| 81 | 1 | 9 | 90 | 0 | 0 | 6 | 94 | 0 | 5.9 |
| 82 | 0 | 50 | 50 | 0 | 0 | 40 | 60 | 0 | 7.0 |
| 90 | 1 | 5 | 33 | 61 | 2 | 5 | 34 | 59 | 2.7 |
| 96 | 7 | 47 | 45 | 1 | 9 | 50 | 40 | 1 | 6.2 |
| 97 | 3 | 8 | 80 | 9 | 3 | 7 | 83 | 7 | 2.5 |
| State | 20 | 44 | 32 | 4 | 15 | 50 | 31 | 4 | 5.9 |

Texas Agricultural Districts

- 11 Northern High Plains
- 12 Southern High Plains
- 21 Northern Low Plains
- 22 Southern Low Plains
- 30 Cross Timbers
- 40 Blacklands
- 51 North East
- 52 South East
- 60 Trans-Pecos
- 70 Edwards Plateau
- 81 South Central
- 82 Coastal Bend
- 90 Upper Coast
- 96 South
- 97 Lower Valley

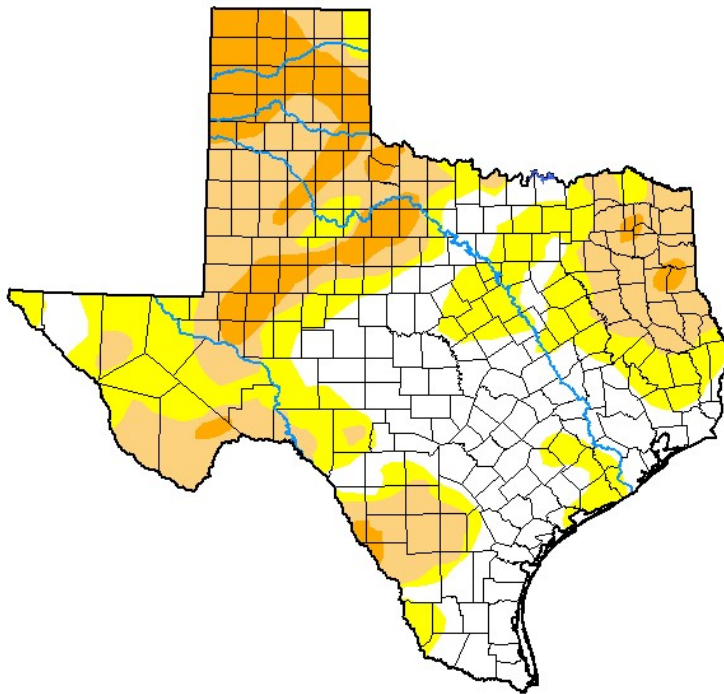


Seven Day Observed Regional Precipitation, November 28, 2021.



Source: National Weather Service, www.nws.noaa.gov

Drought Monitor, Valid November 23, 2021.



Drought Conditions (Percent Area)

| | None | D0-D4 | D1-D4 | D2-D4 | D3-D4 | D4 |
|--|-------|-------|-------|-------|-------|-------|
| Current | 33.41 | 66.59 | 39.74 | 12.58 | 0.00 | 0.00 |
| Last Week <i>11-16-2021</i> | 36.07 | 63.93 | 35.85 | 9.35 | 0.00 | 0.00 |
| 3 Months Ago <i>08-24-2021</i> | 94.51 | 5.49 | 1.10 | 0.00 | 0.00 | 0.00 |
| Start of Calendar Year <i>12-29-2020</i> | 8.80 | 91.20 | 81.11 | 50.33 | 30.09 | 13.03 |
| Start of Water Year <i>09-28-2021</i> | 45.57 | 54.43 | 7.26 | 0.27 | 0.00 | 0.00 |
| One Year Ago <i>11-24-2020</i> | 1.85 | 98.15 | 84.24 | 43.74 | 21.54 | 9.54 |

Intensity:

- None
- D0 Abnormally Dry
- D1 Moderate Drought
- D2 Severe Drought
- D3 Extreme Drought
- D4 Exceptional Drought

The Drought Monitor focuses on broad-scale conditions. Local conditions may vary. For more information on the Drought Monitor, go to <https://droughtmonitor.unl.edu/About.aspx>

Author:

Richard Heim
NCEI/NOAA



droughtmonitor.unl.edu

Source: National Drought Mitigation Center, a partnership with USDA, U.S. Department of Commerce/NOAA, <http://droughtmonitor.unl.edu>