



Texas Crop Progress and Condition

Southern Plains Regional Field Office
Post Office Box 70 Austin, Texas 78767
(800) 626-3142 · FAX (855) 270-2725 · www.nass.usda.gov/tx

Issue: TX-CW4121

Weekly Summary for October 25-October 31

Released: November 1

Most of the state received from trace amounts to upwards of 2.0 inches of precipitation. Areas of the Upper Coast and South East Texas received up to 4.0 inches. There was an average of 5.7 days suitable for fieldwork.

Small Grains: Small grains continued to progress in areas of the Blacklands and Edwards Plateau. Winter wheat was in need of moisture in most areas of the High and Low Plains, and the Cross Timbers.

Row Crops: Corn harvest was wrapping up in the Northern High Plains. Cotton harvest was in full swing in the Plains, the Cross Timbers, and the Edwards Plateau, and was nearly complete in the Blacklands. Peanuts harvested reached 48 percent, down 1 point from the previous year but unchanged from normal. Soybeans harvested reached 90 percent, up 7 points from the previous year and up 7 points from normal.

Fruit, Vegetable and Specialty Crops: Pecan harvest continued in some areas of the Trans-Pecos, the Edwards Plateau, South Texas, and South Central Texas. Sugar cane harvest has begun in areas of the Lower Valley, while citrus and vegetable harvests continued.

Livestock, Range and Pasture: Supplemental feeding continued in various areas across the state. Pastures were reported in good condition in various areas of Central Texas with other areas reporting needing more moisture. Range and pasture condition was rated mostly fair to good.

Crop Progress

Stage	Percent of Acreage			
	Current Week	Previous Week	Previous Year	5 Year Average
Corn				
Harvested	97	94	92	89
Cotton				
Bolls Opening	93	89	97	93
Harvested	45	40	57	41
Peanuts				
Matured	67	62	66	61
Harvested	48	30	49	48
Soybeans				
Harvested	90	86	83	83
Sunflowers				
Harvested	89	84	86	78
Winter Wheat				
Planted	79	72	75	76
Emerged	56	48	56	58
Oats				
Planted	84	75	79	81
Emerged	53	42	51	54

(NA) Not available.

Crop Condition

Crop	Percent of Acreage					Index ¹	
	Excellent	Good	Fair	Poor	Very Poor	2021	2020
Corn	17	44	29	9	1	78	67
Cotton	14	44	38	4	0	79	49
Peanuts	13	51	34	2	0	81	70
Soybeans	5	45	40	7	3	72	81
Wheat	1	16	37	31	15	46	60
Range and Pasture	6	28	36	20	10	-	-

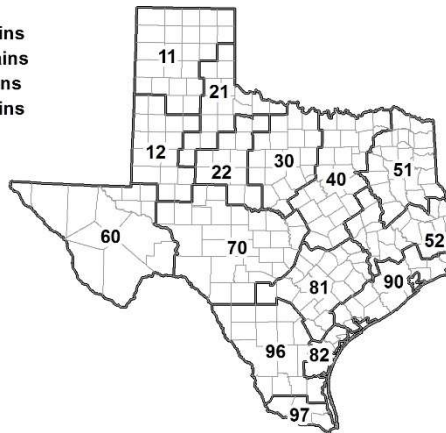
¹ The formula for the condition index is $I = (5V + 25P + 60F + 90G + 110E)/100$ where I = crop condition index and V, P, F, G, E = percentage of crop rated very poor, poor, fair, good, excellent.

Soil Moisture and Days Suitable by District

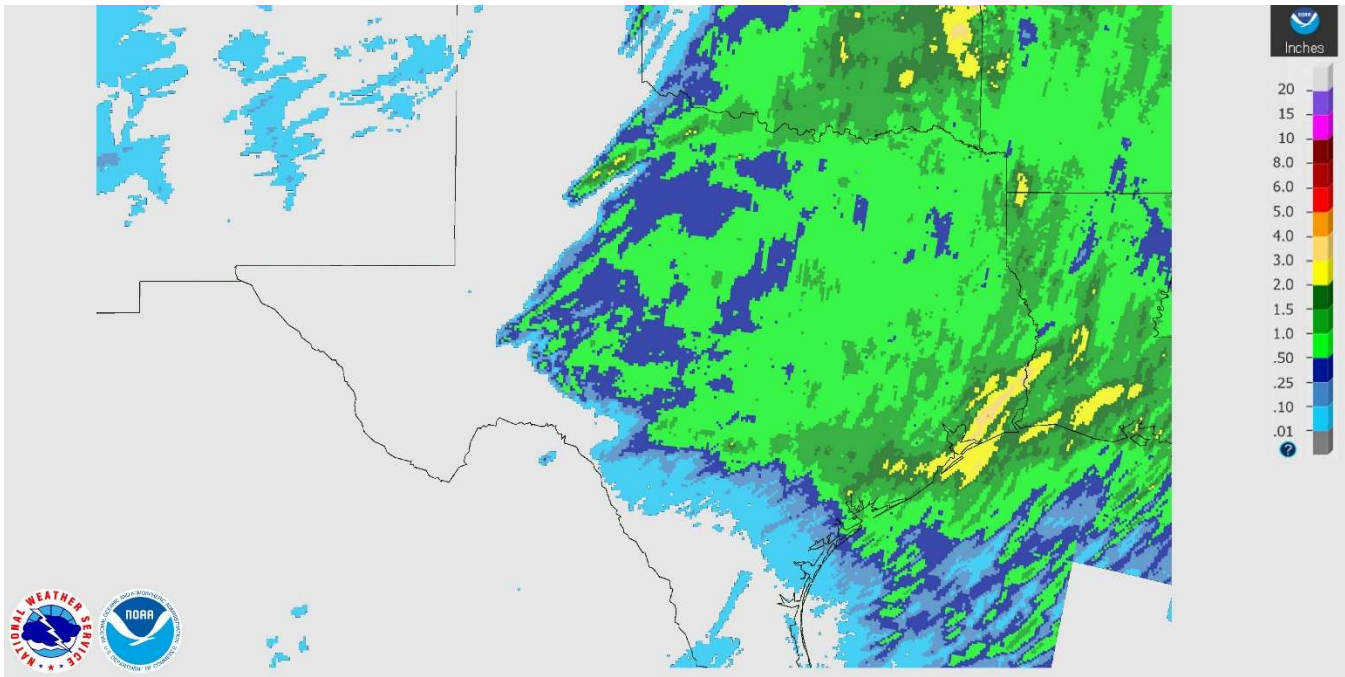
District	Topsoil Moisture Condition by District				Subsoil Moisture Condition by District				Days Suitable for Fieldwork
	Percentage of Acreage				Percentage of Acreage				
	Very Short	Short	Adequate	Surplus	Very Short	Short	Adequate	Surplus	
11	35	30	35	0	30	55	15	0	6.1
12	15	61	24	0	15	57	28	0	6.6
21	17	47	29	7	22	46	32	0	5.2
22	30	37	33	0	33	42	25	0	6.1
30	7	35	54	4	7	35	54	4	5.3
40	8	36	45	11	15	42	37	6	4.8
51	32	43	22	3	40	38	21	1	6.5
52	2	35	61	2	2	38	60	0	6.0
60	18	27	53	2	18	24	55	3	6.0
70	20	28	52	0	17	28	54	1	6.9
81	1	16	78	5	1	20	73	6	6.0
82	0	11	85	4	0	2	94	4	5.4
90	0	1	61	38	0	2	33	65	1.7
96	22	36	42	0	21	47	32	0	6.5
97	9	31	55	5	10	31	55	4	4.1
State	18	36	41	5	19	41	35	5	5.7

Texas Agricultural Districts

- 11 Northern High Plains
- 12 Southern High Plains
- 21 Northern Low Plains
- 22 Southern Low Plains
- 30 Cross Timbers
- 40 Blacklands
- 51 North East
- 52 South East
- 60 Trans-Pecos
- 70 Edwards Plateau
- 81 South Central
- 82 Coastal Bend
- 90 Upper Coast
- 96 South
- 97 Lower Valley

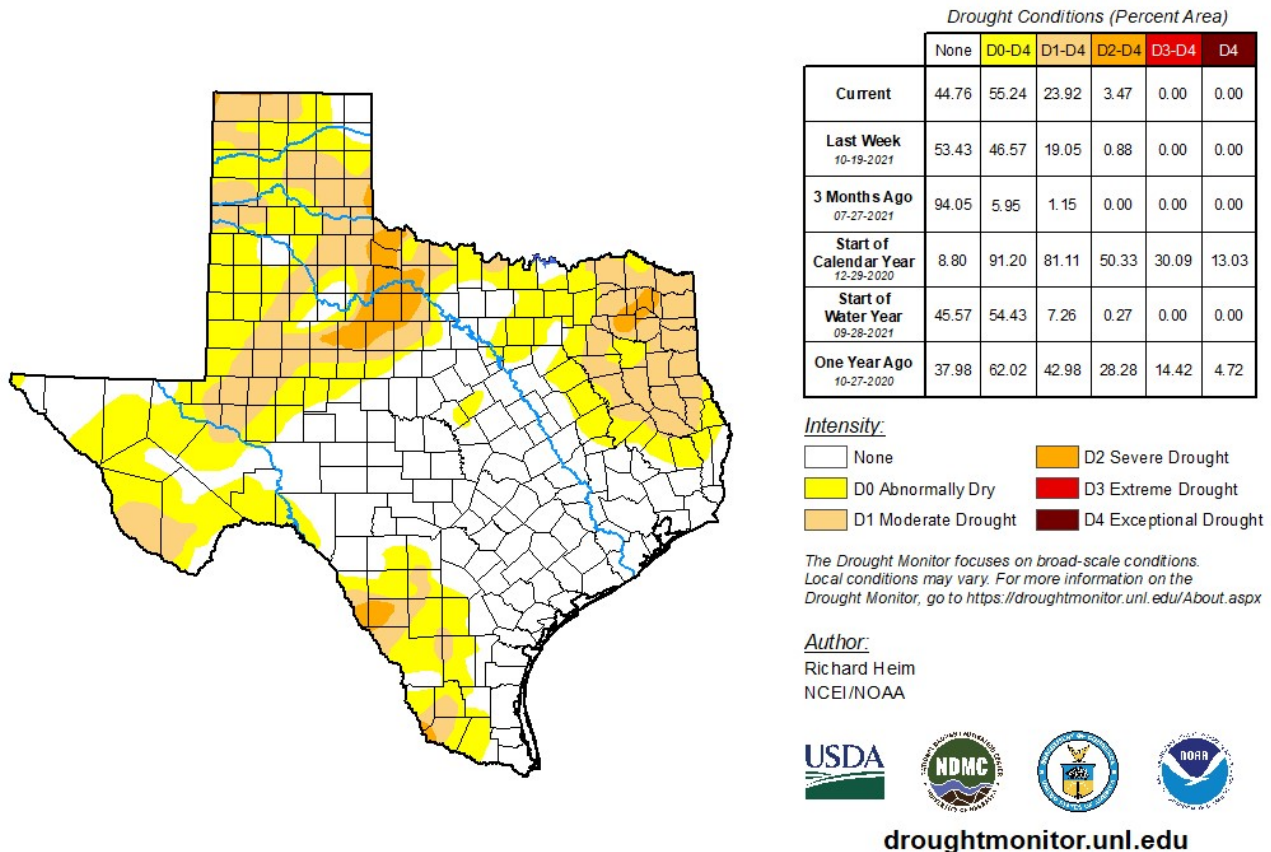


Seven Day Observed Regional Precipitation, October 31, 2021.



Source: National Weather Service, www.nws.noaa.gov

Drought Monitor, Valid October 26, 2021.



Source: National Drought Mitigation Center, a partnership with USDA, U.S. Department of Commerce/NOAA, <http://droughtmonitor.unl.edu>