



Texas Crop Progress and Condition

Southern Plains Regional Field Office
Post Office Box 70 Austin, Texas 78767
(800) 626-3142 · FAX (855) 270-2725 · www.nass.usda.gov/tx

Issue: TX-CW3721

Weekly Summary for September 27-October 3

Released: October 4

Most of the state received from trace amounts to 8.0 inches of precipitation. Some areas in South Central Texas, the Upper Coast, and the Coastal Bend received up to 10.0 inches of precipitation. There was an average of 5.6 days suitable for fieldwork.

Small Grains: Winter wheat seeded increased to 47 percent, up 5 points from the previous year and up 4 points from normal. Winter wheat seedings continued around the state although some producers were waiting until after the rain to begin. Oats seeded reached 35 percent, up 5 points from the previous year and from normal.

Row Crops: Corn harvested increased to 86 percent, up 9 points from the previous year and up 12 points from normal. Cotton harvested reached 23 percent, down 2 points from the previous year but unchanged from normal. Peanuts harvested reached 11 percent, up 1 point from the previous year and up 5 points from normal. Rice harvested increased to 99 percent, down 1 point from the previous year but unchanged from normal. Sorghum harvested reached 84 percent, down 4 points from the previous year but up 5 points from normal. Soybeans harvested reached 69 percent, up 10 points from the previous year and up 7 points from normal. Row crop harvest continued statewide but was delayed due to precipitation.

Fruit, Vegetable and Specialty Crops: Pecan harvest in the Trans-Pecos commenced. Pumpkins were being harvested in the Northern High Plains and the Trans-Pecos. Winter vegetables in the Lower Valley were being planted.

Livestock, Range and Pasture: Livestock were reported to be in good condition. Supplemental feeding occurred in various areas across the state. The pasture and range condition was rated mostly fair to good.

Soil Moisture and Days Suitable by District

District	Topsoil Moisture Condition by District				Subsoil Moisture Condition by District				Days Suitable for Fieldwork
	Percentage of Acreage				Percentage of Acreage				
	Very Short	Short	Adequate	Surplus	Very Short	Short	Adequate	Surplus	
11	41	37	22	0	22	45	33	0	6.3
12	0	100	0	0	0	100	0	0	5.8
21	27	46	27	0	21	55	24	0	6.2
22	21	50	21	8	22	50	28	0	5.4
30	22	47	21	10	21	50	24	5	5.4
40	34	21	41	4	34	31	34	1	5.4
51	20	47	29	4	21	41	34	4	6.4
52	3	41	52	4	4	47	45	4	5.9
60	13	24	52	11	12	25	53	10	5.6
70	14	23	43	20	24	10	65	1	5.7
81	0	13	85	2	0	33	65	2	5.2
82	0	7	62	31	0	5	64	31	4.7
90	7	38	27	28	8	20	14	58	3.3
96	12	35	52	1	16	32	52	0	4.6
97	2	43	42	13	0	13	70	17	3.3
State	19	48	28	5	16	49	30	5	5.6

Crop Progress

Stage	Percent of Acreage			
	Current Week	Previous Week	Previous Year	5 Year Average
Corn				
Mature	97	94	92	87
Harvested	86	83	77	74
Cotton				
Bolls Opening	64	54	80	67
Harvested	23	21	25	23
Peanuts				
Mature	41	35	39	31
Harvested	11	4	10	6
Rice				
Harvested	99	94	100	99
Sorghum				
Mature	95	90	92	86
Harvested	84	80	88	79
Soybeans				
Dropping Leaves	95	90	81	83
Harvested	69	59	59	62
Sunflowers				
Harvested	72	69	69	64
Winter Wheat				
Planted	47	37	42	43
Emerged	19	10	16	17
Oats				
Planted	35	26	30	30
Emerged	8	(NA)	9	6

(NA)Not available.

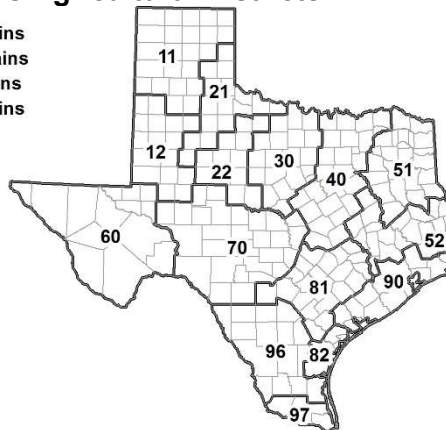
Crop Condition

Crop	Percent of Acreage					Index ¹	
	Excellent	Good	Fair	Poor	Very Poor	2021	2020
Corn	17	44	29	9	1	78	67
Cotton	9	48	37	5	1	77	52
Peanuts	10	52	37	1	0	80	60
Rice	0	0	0	0	0	0	0
Sorghum	15	48	28	8	1	79	67
Soybeans	0	0	0	0	0	0	0
Range and Pasture	2	25	38	22	13	54	61

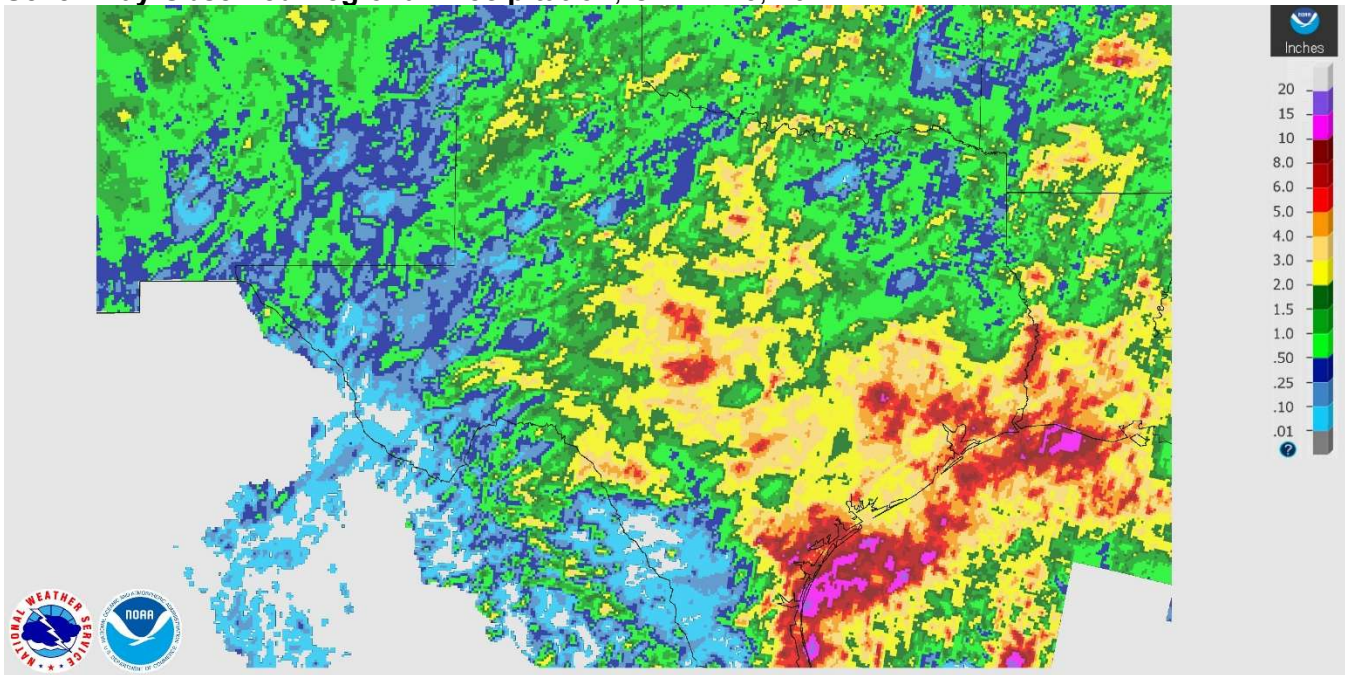
¹ The formula for the condition index is $I = (5V + 25P + 60F + 90G + 110E)/100$ where I = crop condition index and V, P, F, G, E = percentage of crop rated very poor, poor, fair, good, excellent.

Texas Agricultural Districts

- 11 Northern High Plains
- 12 Southern High Plains
- 21 Northern Low Plains
- 22 Southern Low Plains
- 30 Cross Timbers
- 40 Blacklands
- 51 North East
- 52 South East
- 60 Trans-Pecos
- 70 Edwards Plateau
- 81 South Central
- 82 Coastal Bend
- 90 Upper Coast
- 96 South
- 97 Lower Valley

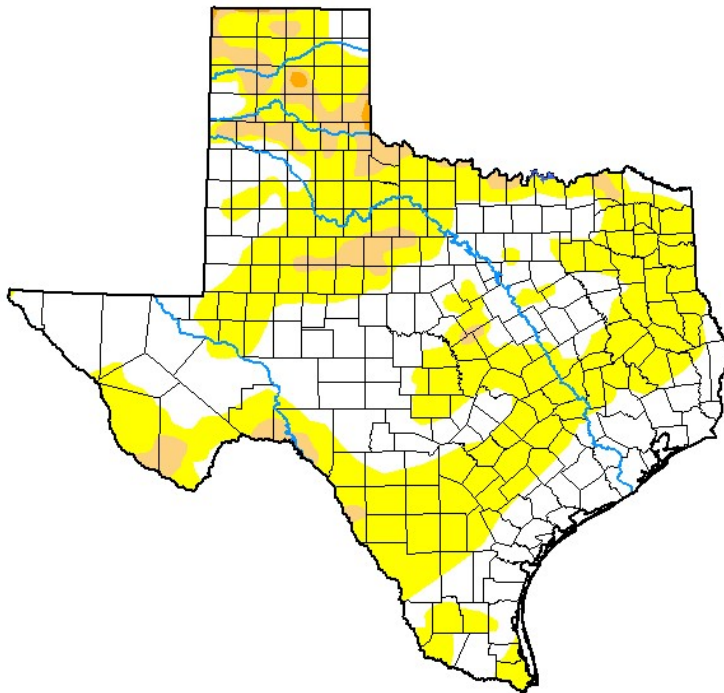


Seven Day Observed Regional Precipitation, October 3, 2021.



Source: National Weather Service, www.nws.noaa.gov

Drought Monitor, Valid September 28, 2021.



Drought Conditions (Percent Area)

	None	D0-D4	D1-D4	D2-D4	D3-D4	D4
Current	45.57	54.43	7.26	0.27	0.00	0.00
Last Week <i>09-21-2021</i>	69.37	30.63	5.51	0.15	0.00	0.00
3 Months Ago <i>06-29-2021</i>	81.56	18.44	9.00	5.67	1.17	0.00
Start of Calendar Year <i>12-29-2020</i>	8.80	91.20	81.11	50.33	30.09	13.03
Start of Water Year <i>09-29-2020</i>	57.35	42.65	31.96	20.91	12.02	3.29
One Year Ago <i>09-29-2020</i>	57.35	42.65	31.96	20.91	12.02	3.29

Intensity:

- None
- D0 Abnormally Dry
- D1 Moderate Drought
- D2 Severe Drought
- D3 Extreme Drought
- D4 Exceptional Drought

The Drought Monitor focuses on broad-scale conditions. Local conditions may vary. For more information on the Drought Monitor, go to <https://droughtmonitor.unl.edu/About.aspx>

Author:

Brian Fuchs
National Drought Mitigation Center



droughtmonitor.unl.edu

Source: National Drought Mitigation Center, a partnership with USDA, U.S. Department of Commerce/NOAA, <http://droughtmonitor.unl.edu>.