



Texas Crop Progress and Condition

Southern Plains Regional Field Office
Post Office Box 70 Austin, Texas 78767
(800) 626-3142 · FAX (855) 270-2725 · www.nass.usda.gov/tx

Issue: TX-CW3621 Weekly Summary for September 20-September 26 Released: September 27

Most of the state received from trace amounts to 2.0 inches of precipitation with most of the rainfall concentrated the South. There was an average of 6.3 days suitable for fieldwork.

Small Grains: Winter wheat planted increased to 37 percent, up 8 points from the previous year and up 5 points from normal. Oats planted reached 26 percent, up 7 points from the previous year and up 8 points from normal.

Row Crops: Corn harvested increased to 83 percent, up 13 points from the previous year and up 14 points from normal. Cotton harvested reached 21 percent, down 1 point from the previous year but up 2 points from normal. In the Northern High Plains, some respondents mentioned cotton producers have finished irrigating for the season. Peanuts mature reached 35 percent, up 2 points from the previous year and up 10 points from normal. Rice harvested increased to 94 percent, down 5 points from the previous year and down 4 points from normal. Sorghum harvested reached 80 percent, down 4 points from the previous year but up 4 points from normal. Soybeans harvested reached 59 percent, up 5 points from the previous year and up 4 points from normal.

Livestock, Range and Pasture: Livestock were reported to be in good condition. Multiple areas in the Southern Low Plains, the Cross Timbers, and the Blacklands report drought stress on pastures, and some areas have experienced fires due to dry conditions. The pasture and range condition was rated mostly fair to good.

Crop Progress

Stage	Percent of Acreage			
	Current Week	Previous Week	Previous Year	5 Year Average
Corn				
Mature	94	85	88	82
Harvested	83	70	70	69
Cotton				
Bolls Opening	54	42	59	54
Harvested	21	19	22	19
Peanuts				
Mature	35	22	33	25
Rice				
Harvested	94	92	99	98
Sorghum				
Mature	90	83	90	84
Harvested	80	73	84	76
Soybeans				
Dropping Leaves	90	78	77	79
Harvested	59	50	54	55
Sunflowers				
Harvested	69	63	63	60
Winter Wheat				
Planted	37	20	29	32
Emerging	10	(NA)	(NA)	6
Oats				
Planted	26	10	19	18

(NA) Not available.

Crop Condition

Crop	Percent of Acreage					Index ¹	
	Excellent	Good	Fair	Poor	Very Poor	2021	2020
Corn	17	44	29	9	1	78	67
Cotton	9	53	33	4	1	78	54
Peanuts	10	51	38	1	0	80	66
Rice	16	58	24	1	1	85	88
Sorghum	15	48	28	8	1	79	67
Soybeans	5	45	40	7	3	72	81
Range and Pasture	3	23	37	22	15	52	58

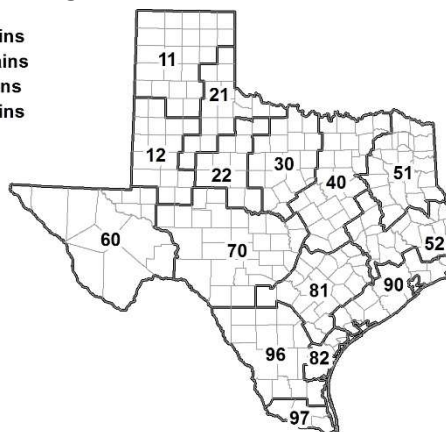
¹ The formula for the condition index is $I = (5V + 25P + 60F + 90G + 110E)/100$ where I = crop condition index and V, P, F, G, E = percentage of crop rated very poor, poor, fair, good, excellent.

Soil Moisture and Days Suitable by District

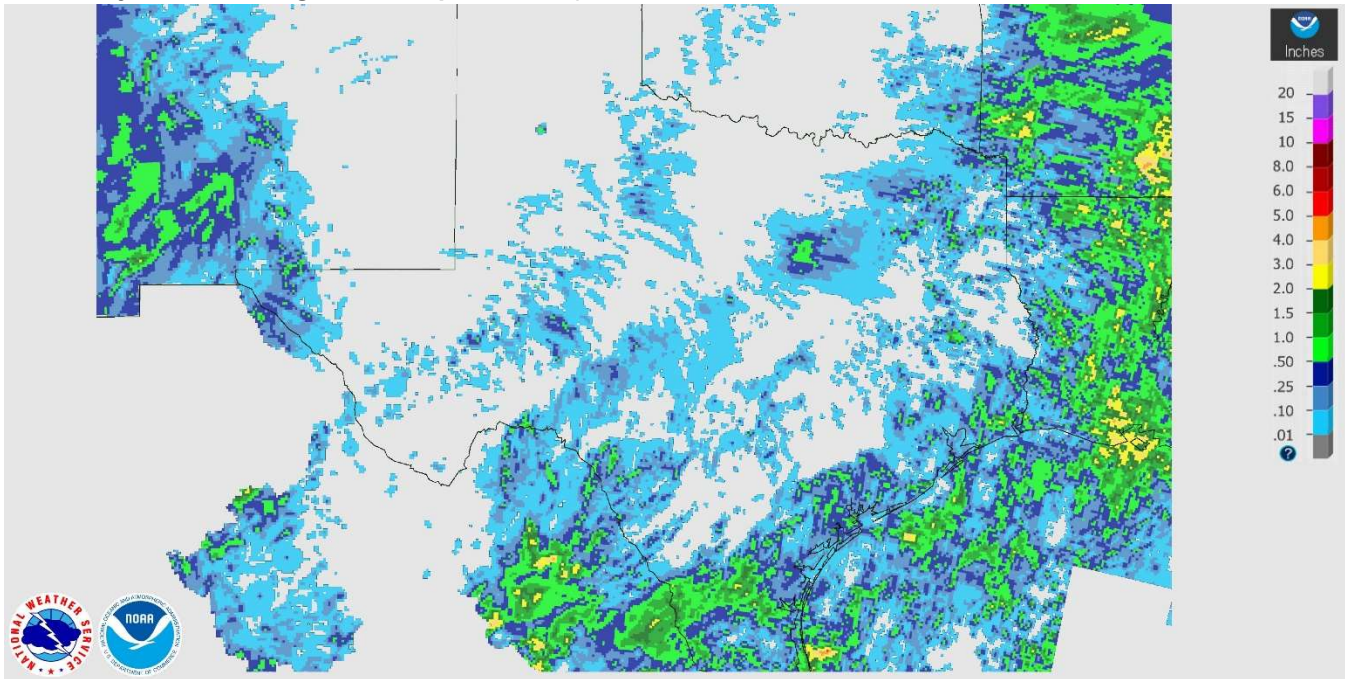
District	Topsoil Moisture Condition by District				Subsoil Moisture Condition by District				Days Suitable for Fieldwork
	Percentage of Acreage				Percentage of Acreage				
	Very Short	Short	Adequate	Surplus	Very Short	Short	Adequate	Surplus	
11	44	36	20	0	15	51	34	0	6.7
12	0	50	50	0	0	44	56	0	4.9
21	28	55	17	0	24	43	33	0	6.7
22	33	63	4	0	26	62	12	0	6.8
30	25	57	18	0	19	59	22	0	6.5
40	37	53	10	0	34	48	18	0	7.0
51	28	52	20	0	29	53	18	0	6.9
52	29	41	30	0	8	51	39	2	6.8
60	28	27	28	17	28	28	27	17	6.1
70	48	37	14	1	52	30	17	1	7.0
81	25	47	28	0	15	45	40	0	6.8
82	0	53	47	0	0	27	73	0	7.0
90	11	34	42	13	9	15	33	43	5.3
96	24	41	34	1	23	32	44	1	6.6
97	17	54	27	2	4	25	69	2	5.4
State	26	48	25	1	17	46	35	2	6.3

Texas Agricultural Districts

- 11 Northern High Plains
- 12 Southern High Plains
- 21 Northern Low Plains
- 22 Southern Low Plains
- 30 Cross Timbers
- 40 Blacklands
- 51 North East
- 52 South East
- 60 Trans-Pecos
- 70 Edwards Plateau
- 81 South Central
- 82 Coastal Bend
- 90 Upper Coast
- 96 South
- 97 Lower Valley

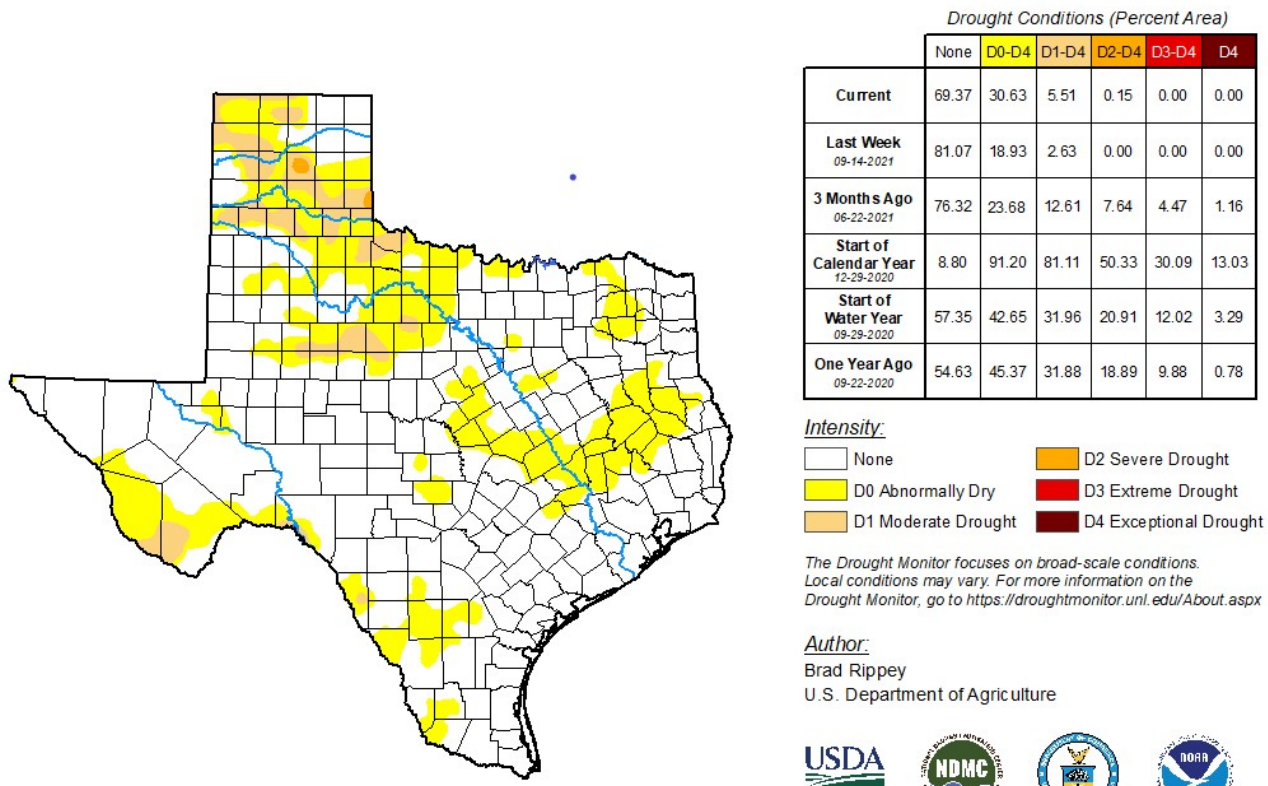


Seven Day Observed Regional Precipitation, September 26, 2021.



Source: National Weather Service, www.nws.noaa.gov

Drought Monitor, Valid September 21, 2021.



Source: National Drought Mitigation Center, a partnership with USDA, U.S. Department of Commerce/NOAA, <http://droughtmonitor.unl.edu>



droughtmonitor.unl.edu