



Texas Crop Progress and Condition

Southern Plains Regional Field Office
Post Office Box 70 Austin, Texas 78767
(800) 626-3142 · FAX (855) 270-2725 · www.nass.usda.gov/tx

Issue: TX-CW3221

Weekly Summary for August 23-August 29

Released: August 30

Most of the state received from trace amounts to 2.0 inches of precipitation. The Coastal Bend and Upper Coast received up to 8.0 inches of precipitation. There was an average of 6.4 days suitable for fieldwork.

Small Grains: Winter wheat seeding was just getting underway in some areas of the High and Low Plains. Meanwhile, preparations ramped up in areas of the Cross Timbers, the Blacklands, and the Edwards Plateau.

Row Crops: Corn harvested reached 50 percent, down 4 points from the previous year and down 3 points from normal. Many areas throughout Texas reported advantageous harvesting conditions with warm weather and little or no rain. Cotton bolls opening reached 22 percent, down 10 points from the previous year and down 4 points from normal. Some areas in the Southern Low Plains reported continued stress due to prolonged heat and insufficient moisture. Peanuts pegging reached 6 percent, down 4 points from the previous year and down 1 point from normal. In the Southern High Plains, some areas reported peanuts were maturing quickly. Rice harvested reached 68 percent, down 8 points from the previous year and down 9 points from normal. While rice harvest progressed last week, there were some complications due to rainfall in the Upper Coast. Sorghum harvested was 63 percent, down 5 points from the previous year and up 1 point from normal. Soybeans dropping leaves was 52 percent, up 9 points from the previous year and up 9 points from normal.

Livestock, Range and Pasture: Reports throughout the state indicate livestock were in good condition. Pasture and range condition was rated mostly good to fair.

Crop Progress

Stage	Percent of Acreage			
	Current Week	Previous Week	Previous Year	5 Year Average
Corn				
Dough	95	90	94	96
Dented	84	82	83	84
Mature	60	57	64	62
Harvested	50	35	54	53
Cotton				
Setting Bolls	81	72	91	92
Bolls Opening	22	15	32	26
Peanuts				
Pegging	93	88	94	96
Mature	6	NA	10	7
Rice				
Harvested	68	51	76	77
Sorghum				
Coloring	85	80	83	83
Mature	75	69	73	73
Harvested	63	55	68	62
Soybeans				
Setting Pods	87	80	81	85
Dropping Leaves	52	39	43	43
Sunflowers				
Harvested	53	49	47	43

NA: Not Available

Crop Condition

Crop	Percent of Acreage					Index ¹	
	Excellent	Good	Fair	Poor	Very Poor	2021	2020
Corn	17	44	29	9	1	78	67
Cotton	18	50	25	6	1	81	50
Peanuts	11	62	26	1	0	84	75
Rice	16	58	24	1	1	85	88
Sorghum	15	48	28	8	1	79	67
Soybeans	2	50	37	9	2	72	78
Range and Pasture	10	33	33	17	7	65	42

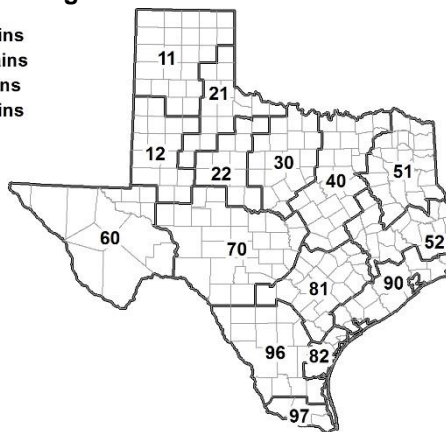
¹ The formula for the condition index is $I = (5V + 25P + 60F + 90G + 110E)/100$ where I = crop condition index and V, P, F, G, E = percentage of crop rated very poor, poor, fair, good, excellent.

Soil Moisture and Days Suitable by District

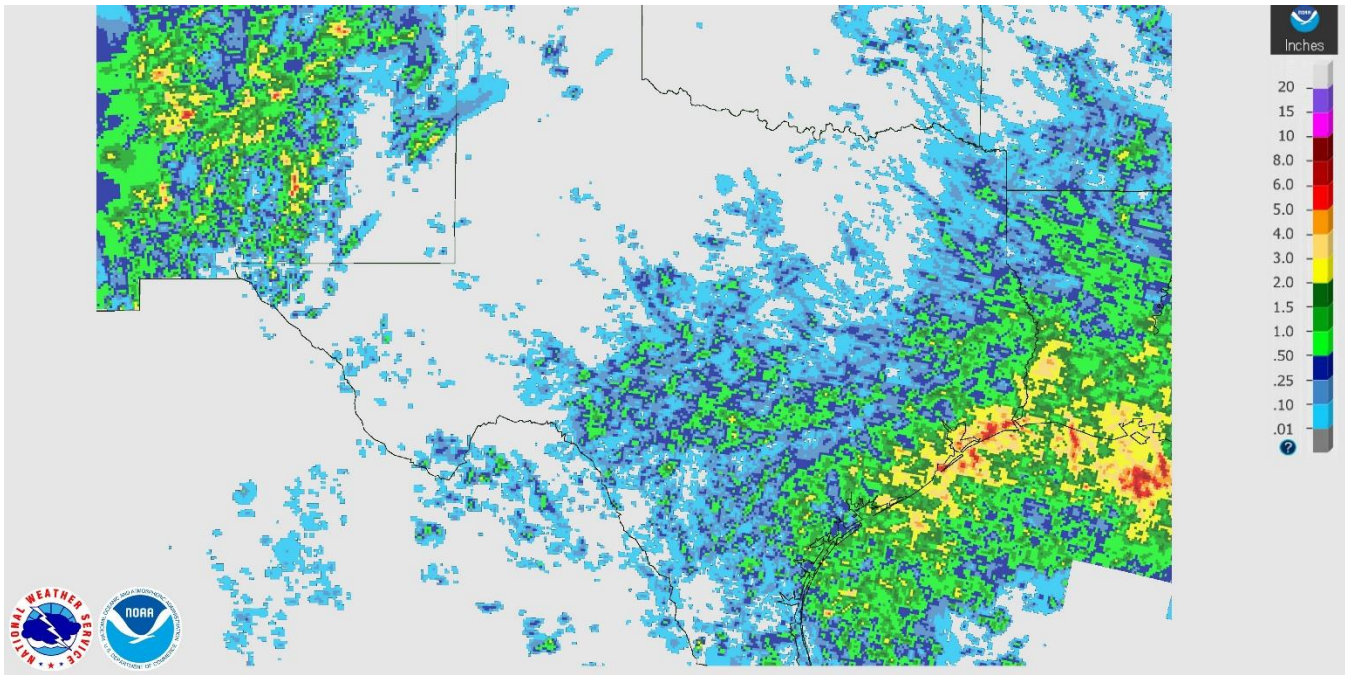
District	Topsoil Moisture Condition by District				Subsoil Moisture Condition by District				Days Suitable for Fieldwork
	Percentage of Acreage				Percentage of Acreage				
	Very Short	Short	Adequate	Surplus	Very Short	Short	Adequate	Surplus	
11	21	40	39	0	13	36	51	0	7.0
12	2	15	51	32	0	25	71	4	5.3
21	10	41	49	0	7	30	62	1	6.2
22	4	42	54	0	0	43	57	0	6.8
30	4	29	67	0	5	31	64	0	6.7
40	8	44	47	1	5	30	64	1	6.7
51	6	23	70	1	8	24	68	0	6.9
52	1	32	67	0	1	28	69	2	6.8
60	13	22	51	14	14	24	48	14	6.0
70	19	35	45	1	18	34	47	1	7.0
81	0	27	71	2	0	18	80	2	6.8
82	0	29	67	4	0	5	91	4	5.4
90	2	19	52	27	1	15	37	47	4.3
96	23	47	30	0	12	32	56	0	6.7
97	6	40	52	2	4	16	78	2	7.0
State	9	32	51	8	6	29	61	4	6.4

Texas Agricultural Districts

- 11 Northern High Plains
- 12 Southern High Plains
- 21 Northern Low Plains
- 22 Southern Low Plains
- 30 Cross Timbers
- 40 Blacklands
- 51 North East
- 52 South East
- 60 Trans-Pecos
- 70 Edwards Plateau
- 81 South Central
- 82 Coastal Bend
- 90 Upper Coast
- 96 South
- 97 Lower Valley

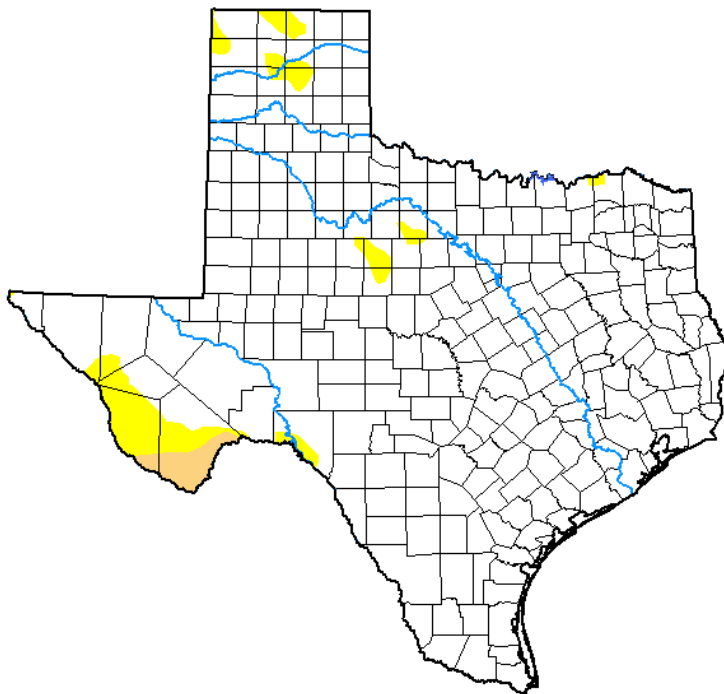


Seven Day Observed Regional Precipitation, August 29, 2021.



Source: National Weather Service, www.nws.noaa.gov

Drought Monitor, Valid August 24, 2021.



Drought Conditions (Percent Area)

	None	D0-D4	D1-D4	D2-D4	D3-D4	D4
Current	94.51	5.49	1.10	0.00	0.00	0.00
Last Week <i>08-17-2021</i>	91.79	8.21	1.17	0.00	0.00	0.00
3 Months Ago <i>05-25-2021</i>	61.55	38.45	25.29	15.87	9.06	4.95
Start of Calendar Year <i>12-29-2020</i>	8.80	91.20	81.11	50.33	30.09	13.03
Start of Water Year <i>09-29-2020</i>	57.35	42.65	31.96	20.91	12.02	3.29
One Year Ago <i>08-25-2020</i>	29.43	70.57	57.27	33.49	12.24	0.74

Intensity:

- None
- D0 Abnormally Dry
- D1 Moderate Drought
- D2 Severe Drought
- D3 Extreme Drought
- D4 Exceptional Drought

The Drought Monitor focuses on broad-scale conditions. Local conditions may vary. For more information on the Drought Monitor, go to <https://droughtmonitor.unl.edu/About.aspx>

Author:

Curtis Riganti
National Drought Mitigation Center



droughtmonitor.unl.edu

Source: National Drought Mitigation Center, a partnership with USDA, U.S. Department of Commerce/NOAA, <http://droughtmonitor.unl.edu>