



Texas Crop Progress and Condition

Southern Plains Regional Field Office
Post Office Box 70 Austin, Texas 78767
(800) 626-3142 · FAX (855) 270-2725 · www.nass.usda.gov/tx

Issue: TX-CW2821

Weekly Summary for July 26-August 1

Released: August 2, 2021

Most of the state received from trace amounts to upwards of 2.0 inches of precipitation. Some areas of the Northern Plains and South East Texas received up to 3.0 inches. There were 6.4 days suitable for fieldwork.

Small Grains: Some producers in the Edwards Plateau were preparing the ground for small grain seedings.

Row Crops: Corn dented reached 58 percent, up 2 points from the previous year and unchanged from normal. Corn harvest continues to pick up in a few areas around the state. Cotton setting bolls reached 41 percent, down 2 points from the previous year and down 1 point from normal. Some cotton producers in the Northern High Plains reported fields destroyed due to hail. Producers in South Central Texas and the Coastal Bend reported cotton is progressing well, and some producers in South Texas reported opening bolls. Peanuts pegging reached 60 percent, down 5 points from the previous year and down 2 points from normal. Rice headed reached 85 percent, down 10 points from the previous year and down 9 points from normal. Rice harvest in the Upper Coast commenced. Sorghum coloring reached 65 percent, down 4 points from the previous year and down 2 points from normal. Sorghum harvesting began in the Blacklands and throughout the southern portion of the state. Soybeans blooming reached 81 percent, down 1 point from the previous year and down 1 point from normal.

Livestock, Range and Pasture: Livestock producers throughout the state reported livestock were faring well. Pasture and range condition was rated mostly good to fair.

Crop Condition

Crop	Percent of Acreage					Index ¹	
	Excellent	Good	Fair	Poor	Very Poor	2021	2020
Corn	19	44	29	6	2	80	70
Cotton	11	43	37	8	1	75	59
Peanuts	2	51	38	9	0	73	76
Rice	12	44	42	1	1	78	83
Sorghum	11	49	28	9	3	75	74
Soybeans	2	48	43	6	1	73	80
Range and Pasture	18	35	28	11	8	71	52

¹ The formula for the condition index is $I = (5V + 25P + 60F + 90G + 110E)/100$ where I = crop condition index and V, P, F, G, E = percentage of crop rated very poor, poor, fair, good, excellent.

Crop Progress

Stage	Percent of Acreage			
	Current Week	Previous Week	Previous Year	5 Year Average
Corn				
Silked	93	88	95	94
Dough	73	67	75	71
Dented	58	53	56	58
Mature	40	22	34	39
Cotton				
Squaring	76	73	89	88
Setting Bolls	41	30	43	42
Peanuts				
Pegging	60	40	65	62
Rice				
Headed	85	81	95	94
Harvested	7	1	14	14
Sorghum				
Headed	87	86	84	83
Coloring	65	64	69	67
Mature	50	42	55	55
Soybeans				
Blooming	81	77	82	82
Setting Pods	58	45	57	56
Dropping Leaves	3	(NA)	7	7
Sunflowers				
Harvested	30	26	34	25

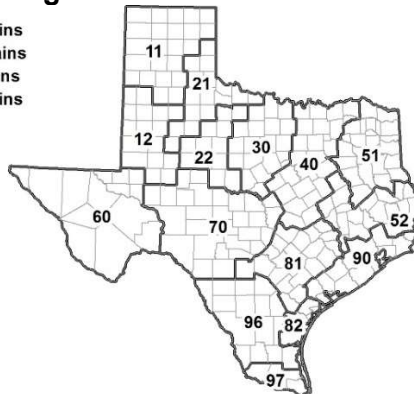
(NA) Not available.

Soil Moisture and Days Suitable by District

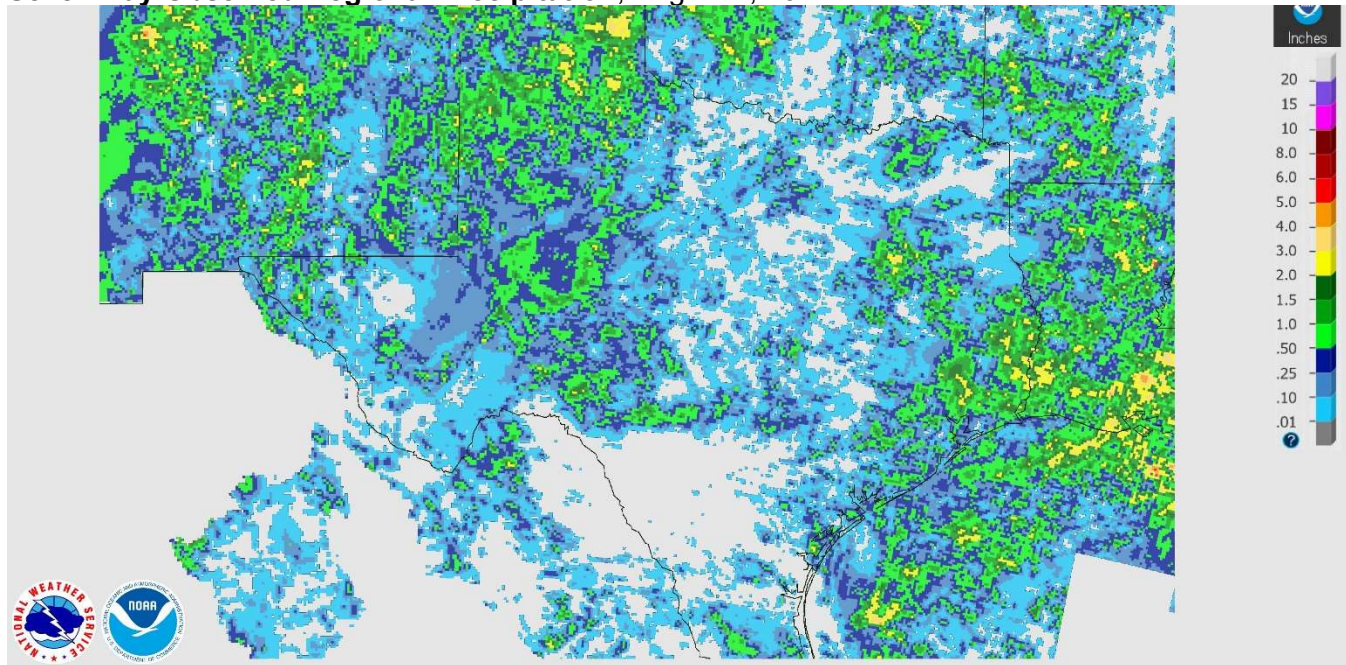
District	Topsoil Moisture Condition by District				Subsoil Moisture Condition by District				Days Suitable for Fieldwork
	Percentage of Acreage				Percentage of Acreage				
	Very Short	Short	Adequate	Surplus	Very Short	Short	Adequate	Surplus	
11	0	30	69	1	0	22	78	0	6.2
12	0	31	69	0	0	35	65	0	6.5
21	0	29	70	1	0	25	74	1	6.9
22	6	35	59	0	1	31	63	5	6.4
30	8	37	55	0	7	25	68	0	6.4
40	5	19	69	7	6	13	75	6	6.7
51	6	19	57	18	5	19	55	21	6.5
52	2	23	65	10	0	18	62	20	6.8
60	14	23	46	17	14	21	48	17	5.6
70	14	41	44	1	12	21	66	1	5.3
81	0	24	76	0	0	15	85	0	6.8
82	0	0	80	20	0	0	78	22	6.2
90	1	13	59	27	1	10	40	49	6.0
96	2	23	74	1	2	18	79	1	6.2
97	5	10	60	25	5	5	75	15	7.0
State	3	27	65	5	2	22	70	6	6.4

Texas Agricultural Districts

- 11 Northern High Plains
- 12 Southern High Plains
- 21 Northern Low Plains
- 22 Southern Low Plains
- 30 Cross Timbers
- 40 Blacklands
- 51 North East
- 52 South East
- 60 Trans-Pecos
- 70 Edwards Plateau
- 81 South Central
- 82 Coastal Bend
- 90 Upper Coast
- 96 South
- 97 Lower Valley

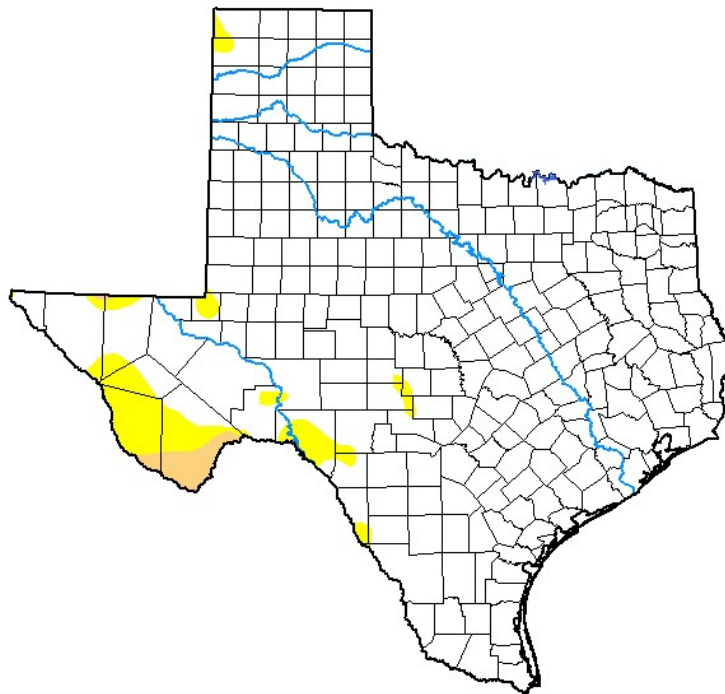


Seven Day Observed Regional Precipitation, August 1, 2021.



Source: National Weather Service, www.nws.noaa.gov.

Drought Monitor, Valid July 27, 2021.



Drought Conditions (Percent Area)

	None	D0-D4	D1-D4	D2-D4	D3-D4	D4
Current	94.05	5.95	1.15	0.00	0.00	0.00
Last Week <i>07-20-2021</i>	92.29	7.71	3.46	0.00	0.00	0.00
3 Months Ago <i>04-27-2021</i>	13.47	86.53	64.95	37.80	24.70	9.74
Start of Calendar Year <i>12-29-2020</i>	8.80	91.20	81.11	50.33	30.09	13.03
Start of Water Year <i>09-29-2020</i>	57.35	42.65	31.96	20.91	12.02	3.29
One Year Ago <i>07-28-2020</i>	39.66	60.34	34.39	14.99	2.99	0.00

Intensity:

- None
- D0 Abnormally Dry
- D1 Moderate Drought
- D2 Severe Drought
- D3 Extreme Drought
- D4 Exceptional Drought

The Drought Monitor focuses on broad-scale conditions. Local conditions may vary. For more information on the Drought Monitor, go to <https://droughtmonitor.unl.edu/About.aspx>

Author:

Brad Rippey
U.S. Department of Agriculture



droughtmonitor.unl.edu

Source: National Drought Mitigation Center, a partnership with USDA, U.S. Department of Commerce/NOAA, <http://droughtmonitor.unl.edu>.