



## Texas Crop Progress and Condition

Southern Plains Regional Field Office  
Post Office Box 70 Austin, Texas 78767  
(800) 626-3142 · FAX (855) 270-2725 · www.nass.usda.gov/tx

**Issue: TX-CW2021**

**Weekly Summary for May 31-June 6**

**Released: June 7, 2021**

Most of the state received from 0.1 inches to upwards of 5.0 inches of precipitation. Some areas in North East Texas received up to 10.0 inches. There were 3.3 days suitable for fieldwork.

**Small Grains:** Winter wheat harvested for grain reached 20 percent, down 30 points from the previous year and down 20 points from normal. Oats harvested for grain reached 21 percent, down 53 point from the previous year and down 39 points from normal. Winter wheat harvest and hay cuttings were delayed further in some areas of the Northern Low Plains, the Cross Timbers, the Blacklands, the Upper Coast, and East Texas due to excess moisture. Small grains in the Southern Low Plains were reaching maturity for harvest.

**Row Crops:** Corn silking reached 49 percent, down 1 point from the previous year but up 6 points from normal. Corn was beginning to get oversaturated in some areas of the Blacklands. Cotton planted reached 60 percent, down 12 points from both the previous year and normal. Cotton squaring reached 12 percent, down 4 points from the previous year and down 1 point from normal. Cotton planting was delayed throughout the High and Low Plains due to precipitation. Peanuts planted reached 50 percent, down 28 points from the previous year and down 34 points from normal. Rice emerged reached 91 percent, down 7 points from the previous year and down 5 points from normal. Rice was progressing well as farmers continued to repair and monitor field levees in the Upper Coast. Sorghum headed reached 40 percent, down 7 points from the previous year and down 3 points from normal. Corn and sorghum in Edwards Plateau were progressing well with recent moisture. Soybeans emerged reached 58 percent, down 12 points from the previous year and down 15 points from normal.

**Fruit, Vegetable and Specialty Crops:** Vegetable planting in North East Texas was slowed due to wet field conditions. Sweet corn harvest in South Texas continued. Cantaloupes and watermelons were progressing well in South Texas. Watermelon harvest in the Lower Valley continued. Pecans were progressing well in South Texas.

**Livestock, Range and Pasture:** Supplemental feeding continued to decline across the state. Insects were bothering livestock in some areas of the Cross Timbers, the Blacklands, the Coastal Bend, and North East Texas. Pasture and range condition was rated mostly good to fair, though pastures continued to show improvement due to recent rainfall events across most of the state.

**Crop Condition**

Crop	Percent of Acreage					Index <sup>1</sup>	
	Excellent	Good	Fair	Poor	Very Poor	2021	2020
Corn	29	50	19	2	0	89	83
Cotton	3	26	50	20	1	62	64
Peanuts	2	49	30	18	1	69	73
Rice	10	41	44	5	0	76	81
Sorghum	13	67	15	4	1	85	72
Soybeans	7	36	49	7	1	71	78
Wheat	3	26	42	21	8	58	63
Oats	2	30	34	25	9	56	74
Range and Pasture	20	31	24	15	10	69	60

<sup>1</sup> The formula for the condition index is  $I = (5V + 25P + 60F + 90G + 110E)/100$  where I = crop condition index and V, P, F, G, E = percentage of crop rated very poor, poor, fair, good, excellent.

### Crop Progress

Stage	Percent of Acreage			
	Current Week	Previous Week	Previous Year	5 Year Average
<b>Corn</b>				
Emerged	90	88	97	91
Silked	49	46	50	43
<b>Cotton</b>				
Planted	60	54	72	72
Squaring	12	10	16	13
<b>Peanuts</b>				
Planted	50	39	78	84
<b>Rice</b>				
Emerged	91	89	98	96
<b>Sorghum</b>				
Planted	89	82	88	90
Headed	40	36	47	43
Coloring	9	(NA)	15	14
<b>Soybeans</b>				
Planted	75	67	82	85
Emerged	65	57	70	73
Blooming	6	1	11	8
<b>Sunflowers</b>				
Planted	57	42	60	63
<b>Winter Wheat</b>				
Harvested	20	18	50	40
<b>Oats</b>				
Harvested	21	18	74	60

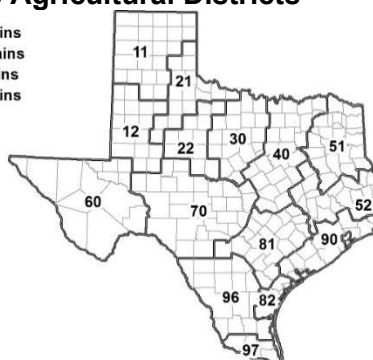
(NA) Not available.

### Soil Moisture and Days Suitable by District

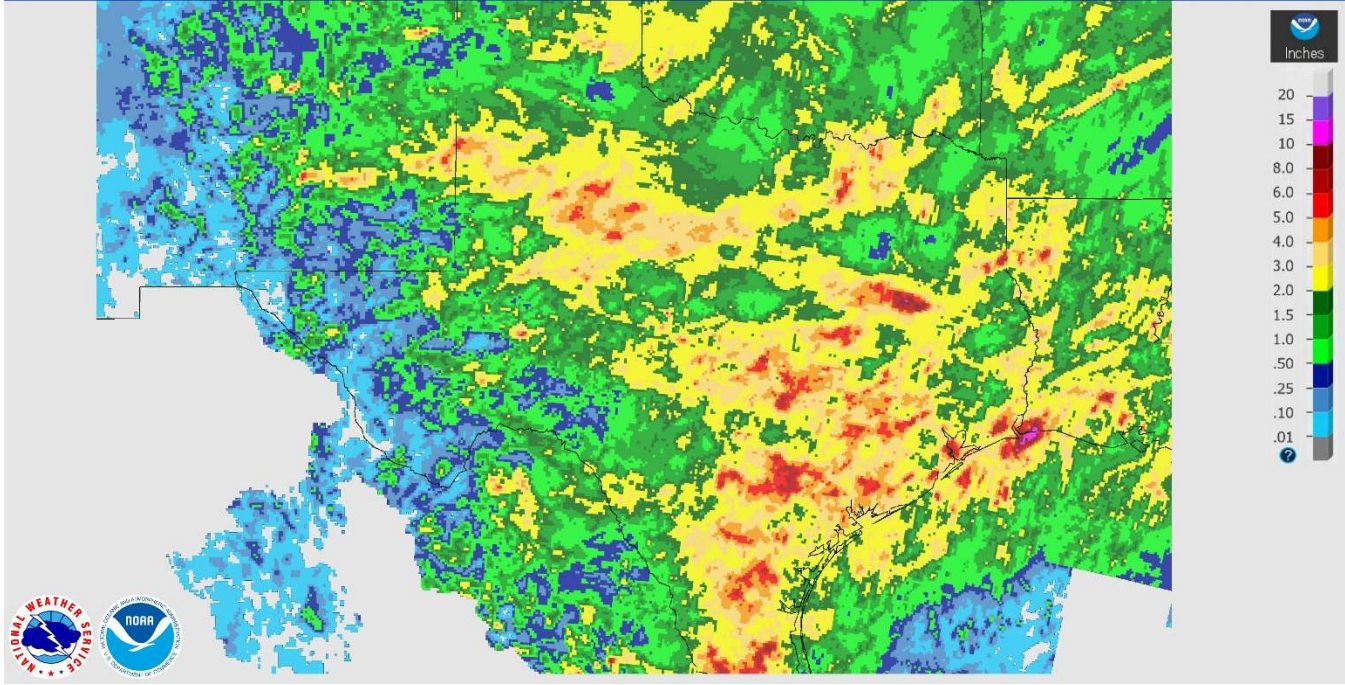
District	Topsoil Moisture Condition by District				Subsoil Moisture Condition by District				Days Suitable for Fieldwork
	Percentage of Acreage				Percentage of Acreage				
	Very Short	Short	Adequate	Surplus	Very Short	Short	Adequate	Surplus	
11	0	17	80	3	0	30	62	8	3.5
12	0	36	64	0	6	54	40	0	6.2
21	0	5	95	0	0	9	91	0	3.2
22	0	0	60	40	0	18	47	35	1.2
30	2	2	42	54	1	3	43	53	2.8
40	0	0	31	69	0	0	32	68	1.4
51	0	1	34	65	0	0	32	68	4.7
52	0	0	24	76	0	0	29	71	3.1
60	60	37	3	0	66	30	3	1	6.1
70	8	10	64	18	16	12	57	15	4.3
81	0	1	14	85	0	1	72	27	3.9
82	0	0	59	41	0	0	59	41	1.1
90	0	0	2	98	0	0	5	95	1.3
96	1	4	34	61	1	4	78	17	2.7
97	0	0	0	100	0	0	0	100	0.0
State	1	11	53	35	2	19	48	31	3.3

### Texas Agricultural Districts

- 11 Northern High Plains
- 12 Southern High Plains
- 21 Northern Low Plains
- 22 Southern Low Plains
- 30 Cross Timbers
- 40 Blacklands
- 51 North East
- 52 South East
- 60 Trans-Pecos
- 70 Edwards Plateau
- 81 South Central
- 82 Coastal Bend
- 90 Upper Coast
- 96 South
- 97 Lower Valley

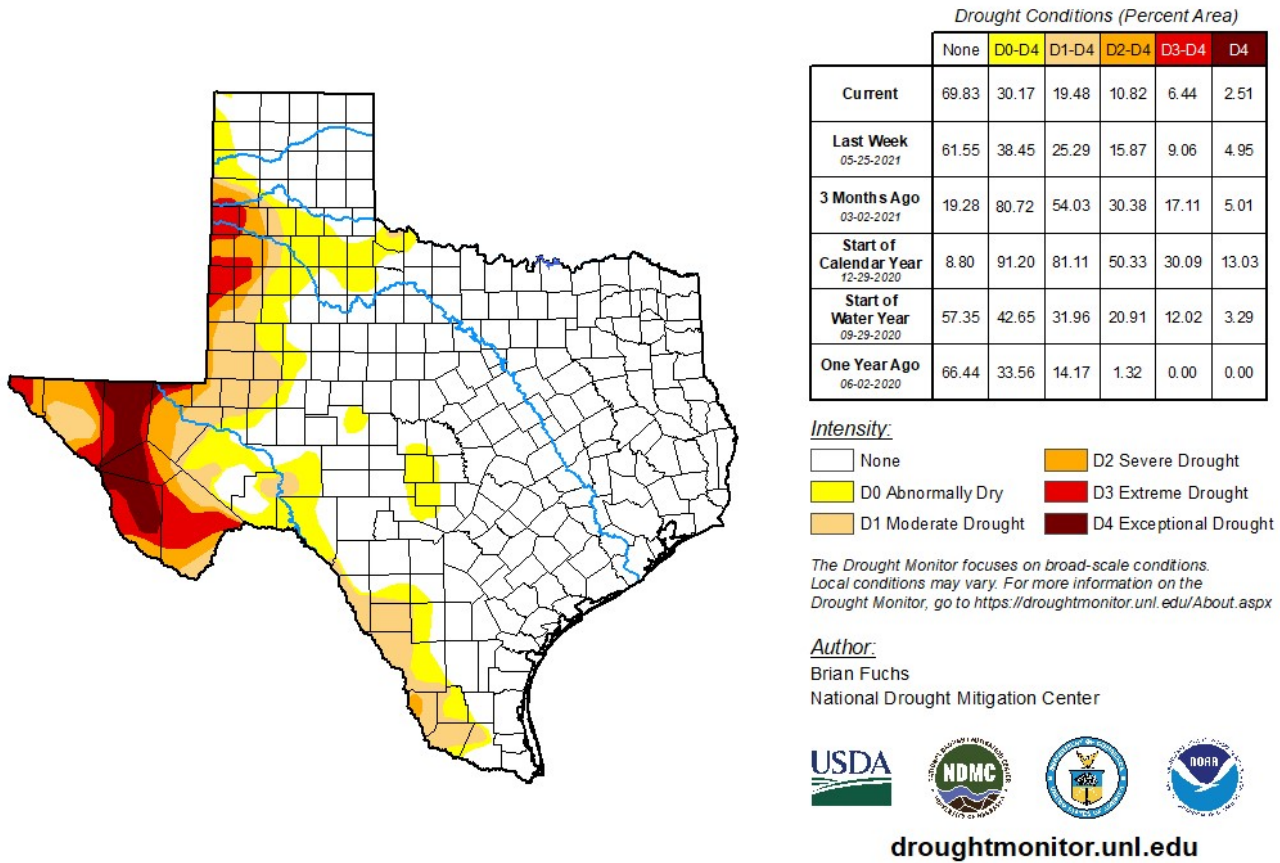


## Seven Day Observed Regional Precipitation, June 6, 2021.



Source: National Weather Service, [www.nws.noaa.gov](http://www.nws.noaa.gov).

## Drought Monitor, Valid June 1, 2021.



Source: National Drought Mitigation Center, a partnership with USDA, U.S. Department of Commerce/NOAA, <http://droughtmonitor.unl.edu>.