



## Texas Crop Progress and Condition

Southern Plains Regional Field Office  
Post Office Box 70 Austin, Texas 78767  
(800) 626-3142 · FAX (855) 270-2725 · www.nass.usda.gov/tx

Issue: TX-CW2121

Weekly Summary for June 07-June 13

Released: June 14, 2021

Most of the state received from trace amounts to upwards of 1.5 inches of precipitation. Some areas in the Low Plains, the Cross Timbers, the Blacklands, and East Texas received up to 5.0 inches. There were 5.4 days suitable for fieldwork.

**Small Grains:** Winter wheat harvested for grain reached 30 percent, down 36 points from the previous year and down 25 points from normal. Winter wheat was progressing well in the Northern High Plains aided by the heat and wind. Oats harvested for grain reached 40 percent, down 46 points from the previous year and down 33 points from normal. Small grain harvest in the Northern Low Plains and the Blacklands commenced. Farmers across the state worked on cutting and baling hay as others waited for fields to dry out.

**Row Crops:** Corn silking reached 55 percent, up 2 point from the previous year and up 7 points from normal. Cotton squaring reached 14 percent, down 4 points from the previous year and down 1 point from normal. Cotton planting moved towards completion in the Southern High Plains. Meanwhile, in the Low Plains cotton planting had begun. Cotton in the Edwards Plateau and the Coastal Bend progressed well with recent favorable weather. Peanuts planted reached 66 percent, down 19 points from the previous year and down 24 points from normal. Peanut planting in South Texas was in full swing. Rice headed reached 6 percent, down 9 points from the previous year and down 2 points from normal. Rice was progressing well in the Upper Coast. Sorghum coloring reached 26 percent, down 6 points from the previous year but up 1 point from normal. Corn and grain sorghum in some areas of the Cross Timbers and the Blacklands were progressing well. Soybeans blooming reached 15 percent, down 4 points from both the previous year and normal.

**Fruit, Vegetable and Specialty Crops:** Pecan orchards in the Southern High Plains were being irrigated and sprayed for Pecan Nut Casebearers. Potato, sweet corn, and cantaloupe harvest in South Texas continued. Meanwhile, watermelon harvest in South Texas and the Lower Valley progressed.

**Livestock, Range and Pasture:** Supplemental feeding continued to decline across the state. An increase in various insect populations were bothering livestock in some areas of the Southern Low Plains, the Cross Timbers, the Blacklands, East Texas, the Edwards Plateau, and the Upper Coast. Cattle producers in South Texas were busy vaccinating and deworming their herds. Pasture and range condition was rated mostly good to fair.

Crop Condition

Crop	Percent of Acreage					Index <sup>1</sup>	
	Excellent	Good	Fair	Poor	Very Poor	2021	2020
Corn	33	45	19	2	1	89	76
Cotton	8	20	61	10	1	66	61
Peanuts	2	49	33	15	1	70	69
Rice	14	54	27	5	0	81	78
Sorghum	22	59	15	3	1	87	65
Soybeans	7	29	57	6	1	70	75
Wheat	2	23	46	22	7	56	60
Oats	2	14	44	30	10	49	63
Range and Pasture	15	35	26	15	9	68	58

<sup>1</sup> The formula for the condition index is  $I = (5V + 25P + 60F + 90G + 110E)/100$  where I = crop condition index and V, P, F, G, E = percentage of crop rated very poor, poor, fair, good, excellent.

### Crop Progress

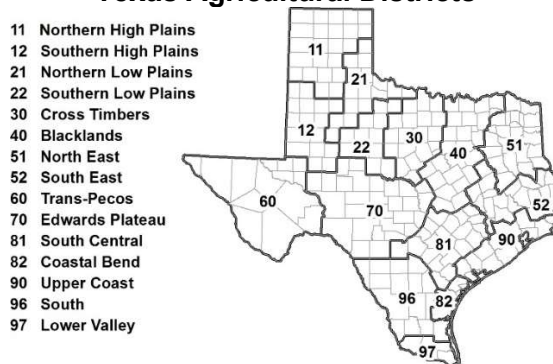
Stage	Percent of Acreage			
	Current Week	Previous Week	Previous Year	5 Year Average
<b>Corn</b>				
Emerged	94	90	99	94
Silked	55	49	53	48
Dough	6	(NA)	0	6
<b>Cotton</b>				
Planted	88	60	85	86
Squaring	14	12	18	15
<b>Peanuts</b>				
Planted	66	50	85	90
<b>Rice</b>				
Emerged	93	91	98	98
Headed	6	4	15	8
<b>Sorghum</b>				
Planted	95	89	92	93
Headed	45	40	50	47
Coloring	26	9	32	25
<b>Soybeans</b>				
Planted	85	75	(NA)	(NA)
Emerged	72	65	76	79
Blooming	15	6	19	19
<b>Sunflowers</b>				
Planted	64	57	68	72
<b>Winter Wheat</b>				
Harvested	30	20	66	55
<b>Oats</b>				
Harvested	40	21	86	73

(NA) Not available.

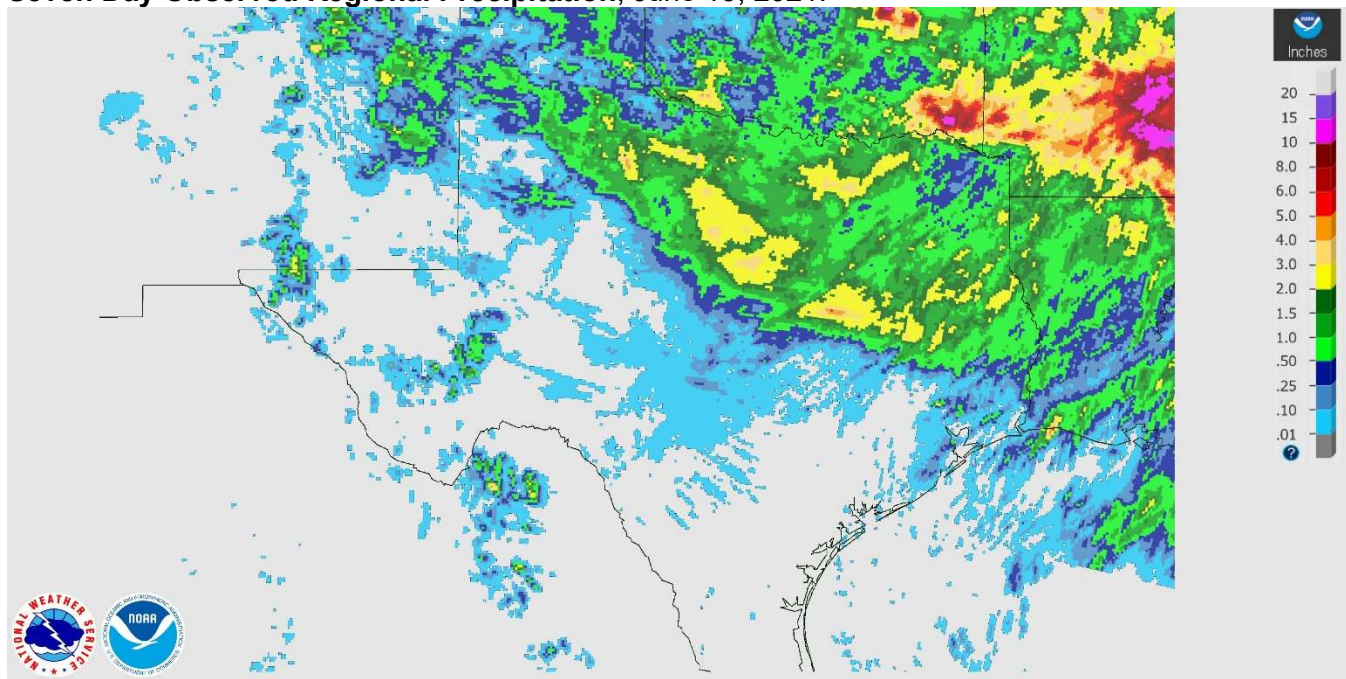
### Soil Moisture and Days Suitable by District

District	Topsoil Moisture Condition by District				Subsoil Moisture Condition by District				Days Suitable for Fieldwork
	Percentage of Acreage				Percentage of Acreage				
	Very Short	Short	Adequate	Surplus	Very Short	Short	Adequate	Surplus	
11	0	17	80	3	0	22	72	6	5.3
12	0	60	40	0	1	69	30	0	7.0
21	0	9	90	1	0	9	91	0	5.6
22	0	5	71	24	0	16	58	26	4.6
30	2	1	57	40	1	3	57	39	4.3
40	0	9	54	37	0	2	57	41	3.2
51	0	0	48	52	0	0	46	54	6.0
52	0	6	45	49	0	3	40	57	5.1
60	47	24	29	0	47	24	29	0	6.4
70	3	23	57	17	3	10	72	15	6.8
81	0	6	91	3	0	0	99	1	6.2
82	0	0	80	20	0	0	74	26	4.7
90	1	2	36	61	1	2	29	68	4.5
96	1	10	66	23	1	11	79	9	4.9
97	6	17	66	11	6	17	62	15	7.0
State	1	19	62	18	1	21	59	19	5.4

### Texas Agricultural Districts

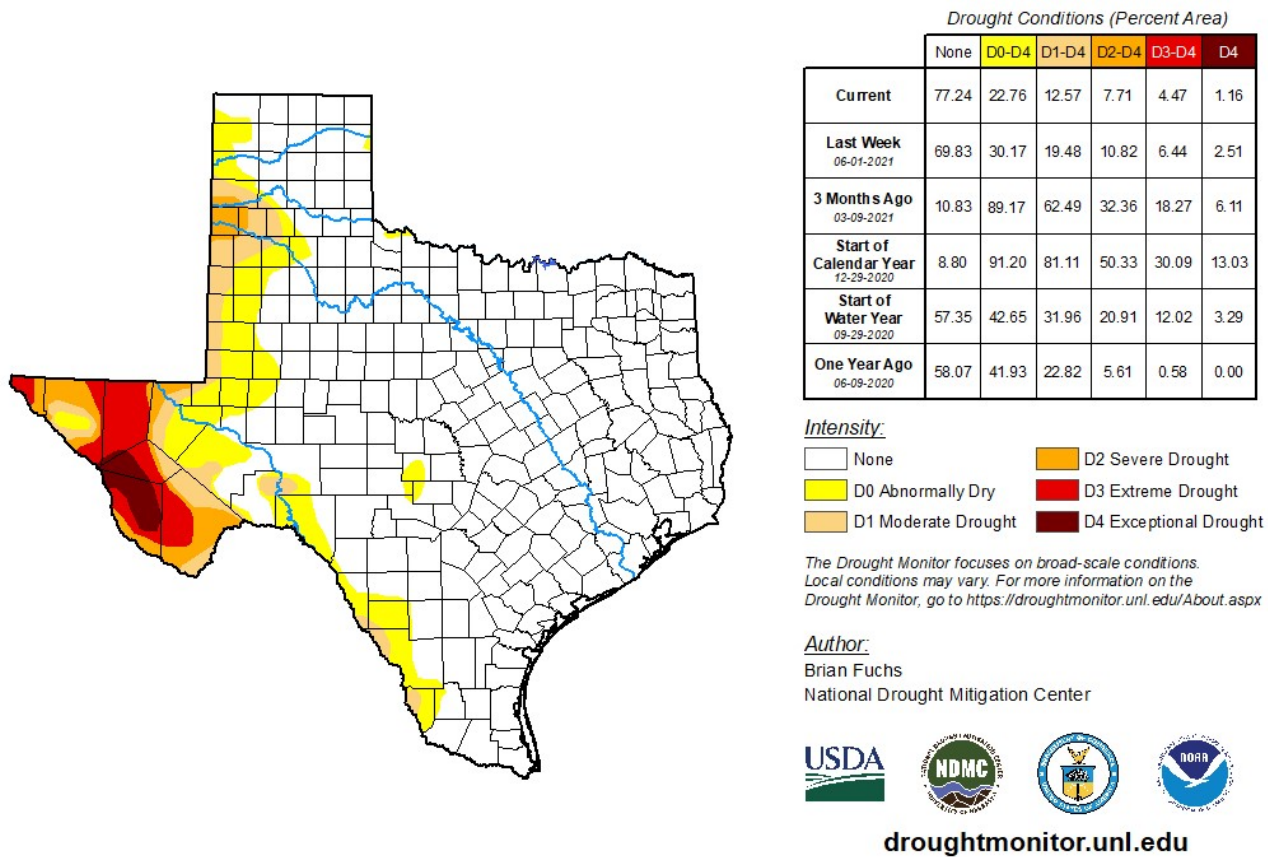


## Seven Day Observed Regional Precipitation, June 13, 2021.



Source: National Weather Service, [www.nws.noaa.gov](http://www.nws.noaa.gov).

## Drought Monitor, Valid June 8, 2021.



Source: National Drought Mitigation Center, a partnership with USDA, U.S. Department of Commerce/NOAA, <http://droughtmonitor.unl.edu>.