

TEXAS FIRE POTENTIAL UPDATE

JUNE 14TH – JUNE 20TH 2021

PREDICTIVE SERVICES DEPARTMENT



Fire Potential Notes

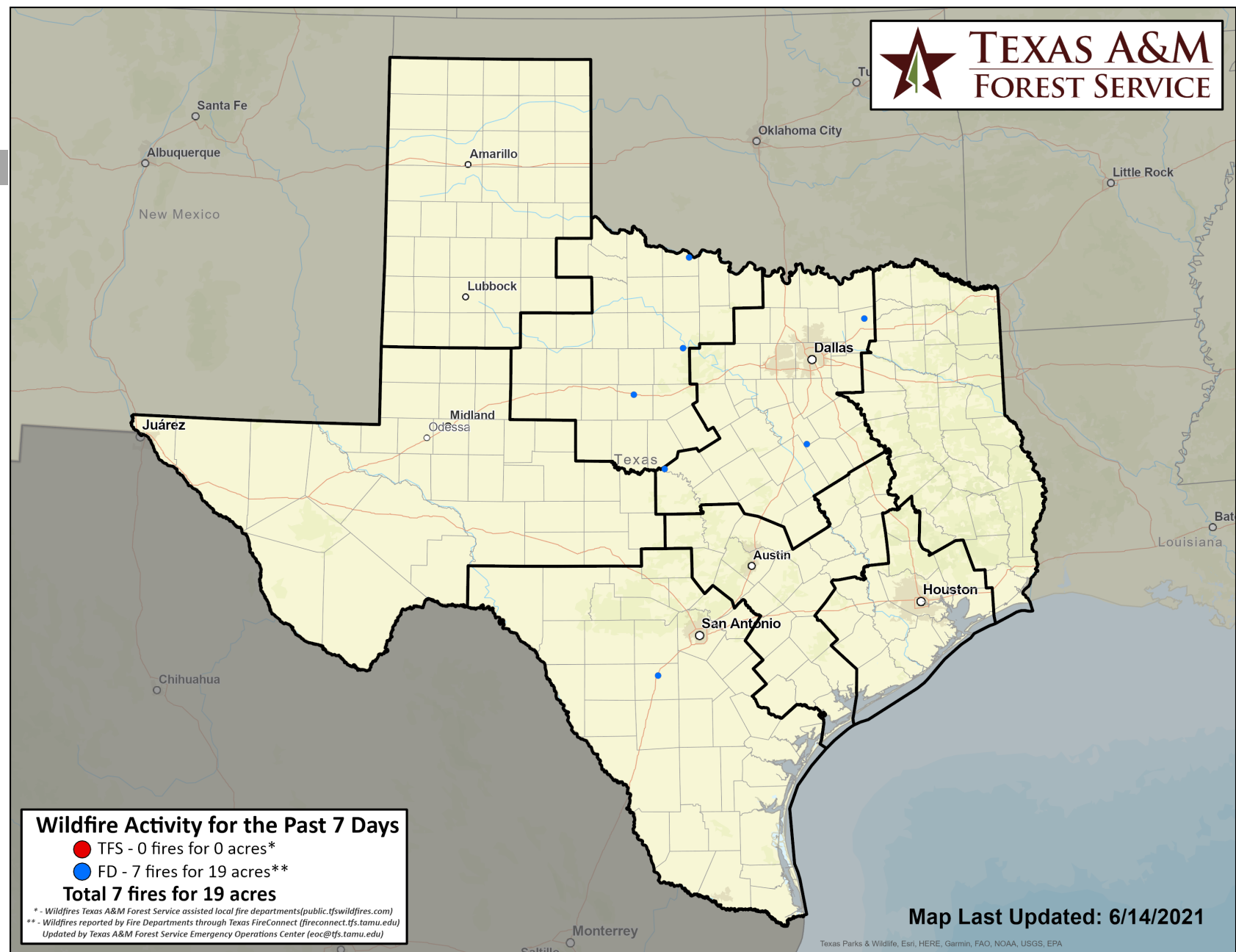
2

- The state's fire environment through Friday will generally feature above normal temperatures and mostly dry conditions. Timber litter surface fuel will continue to dry in East Texas and become more receptive to wildfire ignitions late in the week, but overall initial attack potential should remain low. The rest of the state will continue to have low initial attack potential due to green herbaceous fuel or normal to above normal fuel moisture.
- A tropical system may develop in the Gulf of Mexico late in the week. The current forecast indicates some rainfall by the weekend for the Upper Texas Coast and South East Texas near the lower Sabine River. No elevated or critical fire weather is forecast to develop west of the tropical system. Initial attack potential should remain low across the state this upcoming weekend.

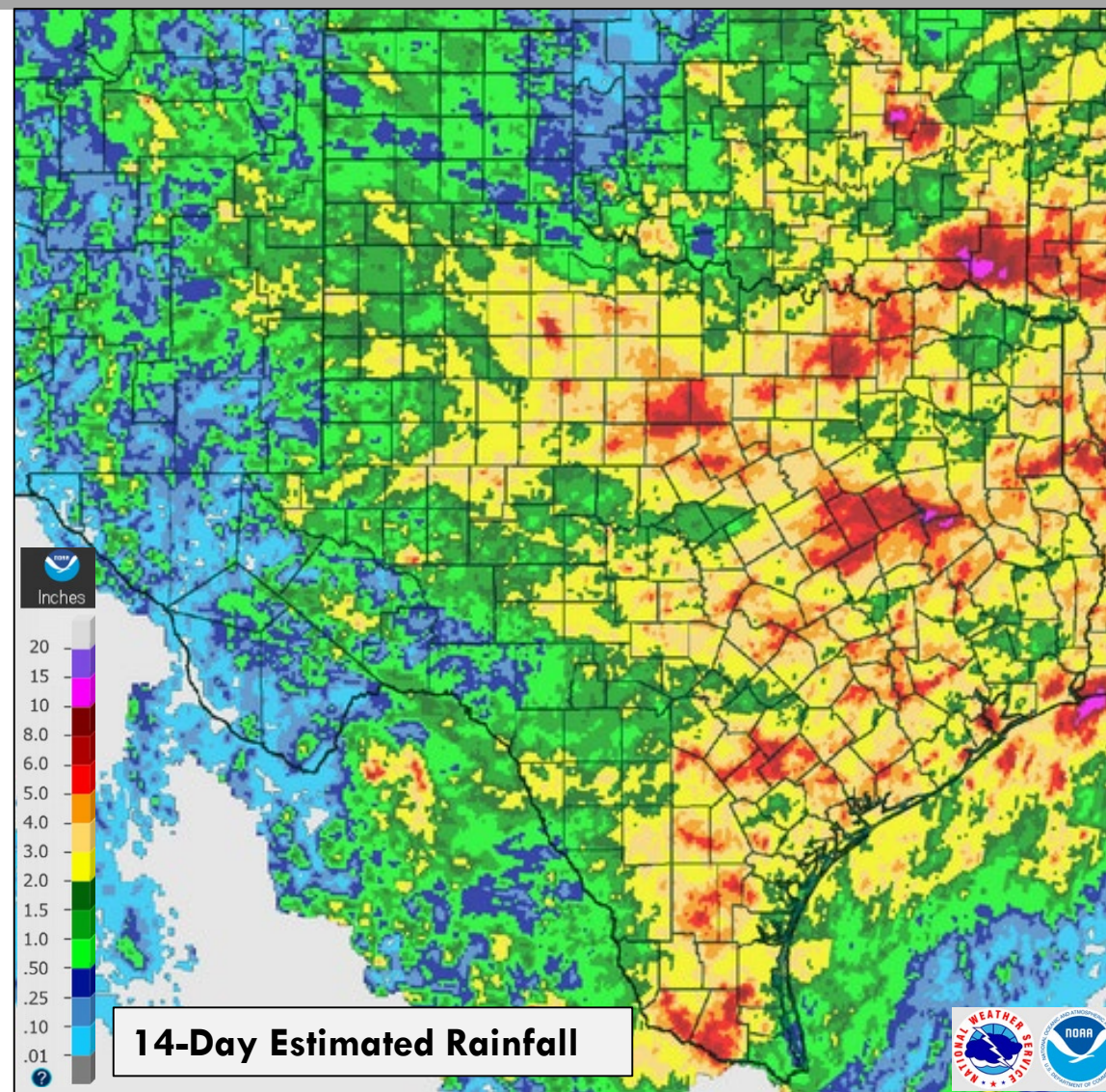
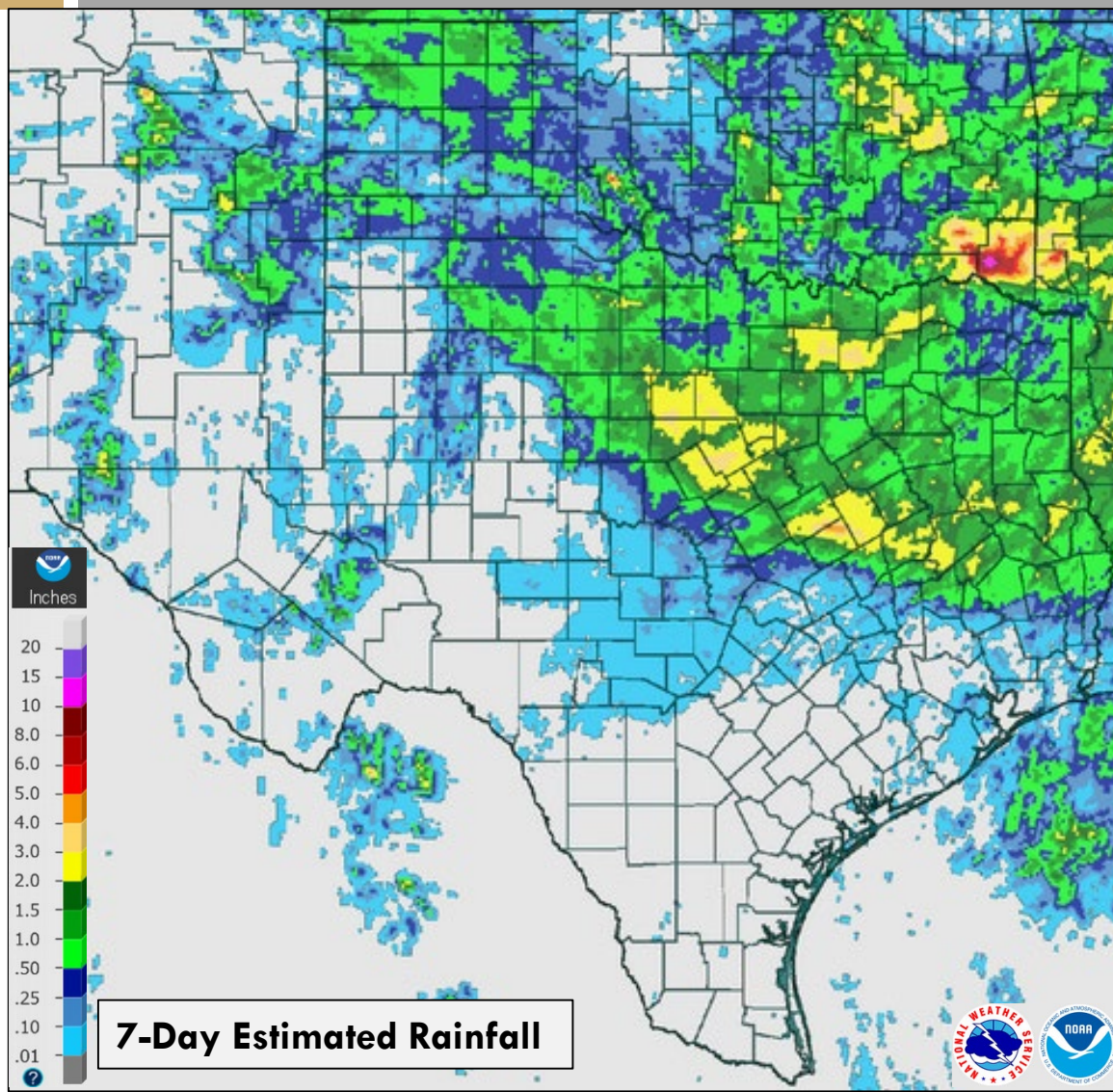


3

Locally reported fire activity has been low over the past week. Initial attack fire potential should remain low this week as green herbaceous fuel and normal to above normal dead fuel moisture should counter this week's warm and mostly dry fire environment. TFS has not responded to an initial attack fire since May 14th due to the prolonged moist fire environment.

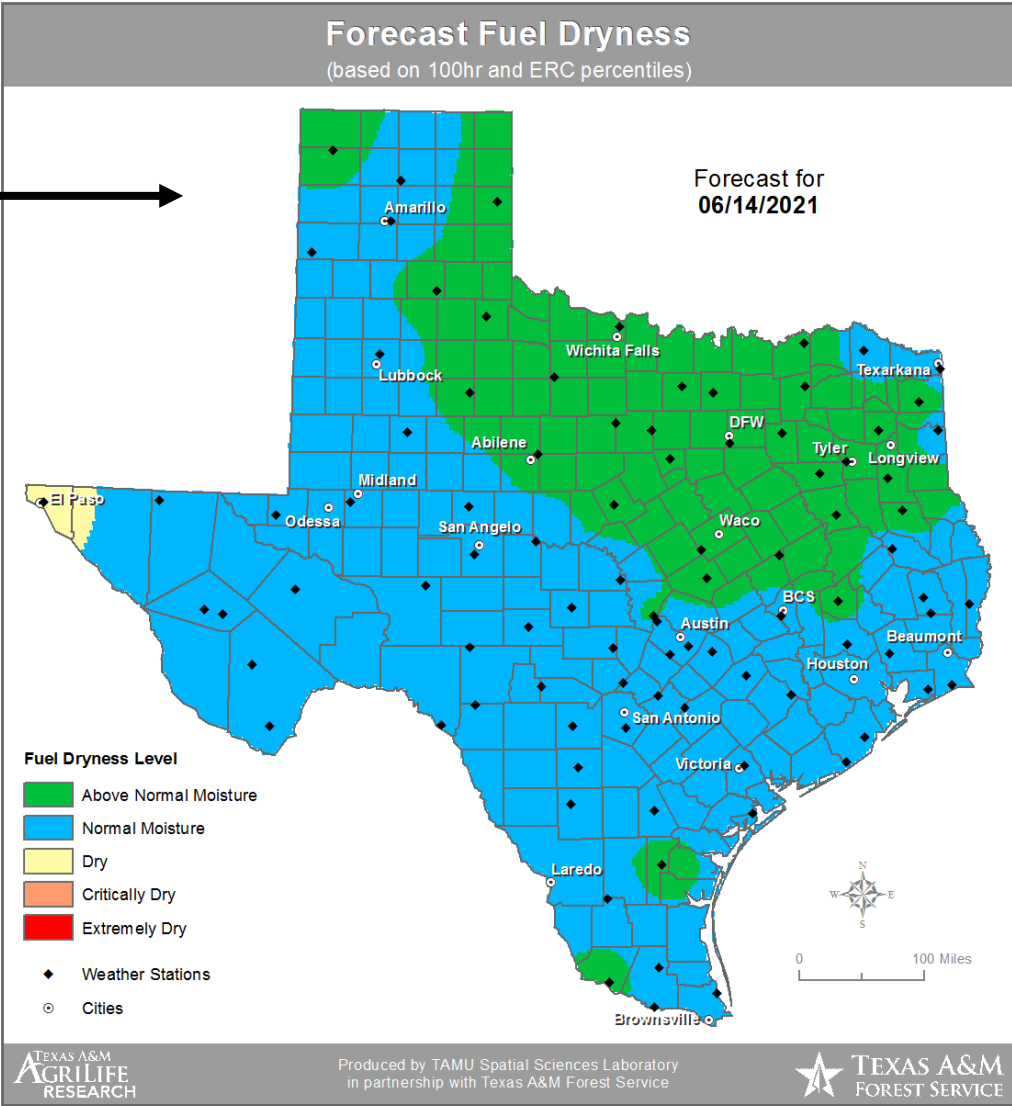
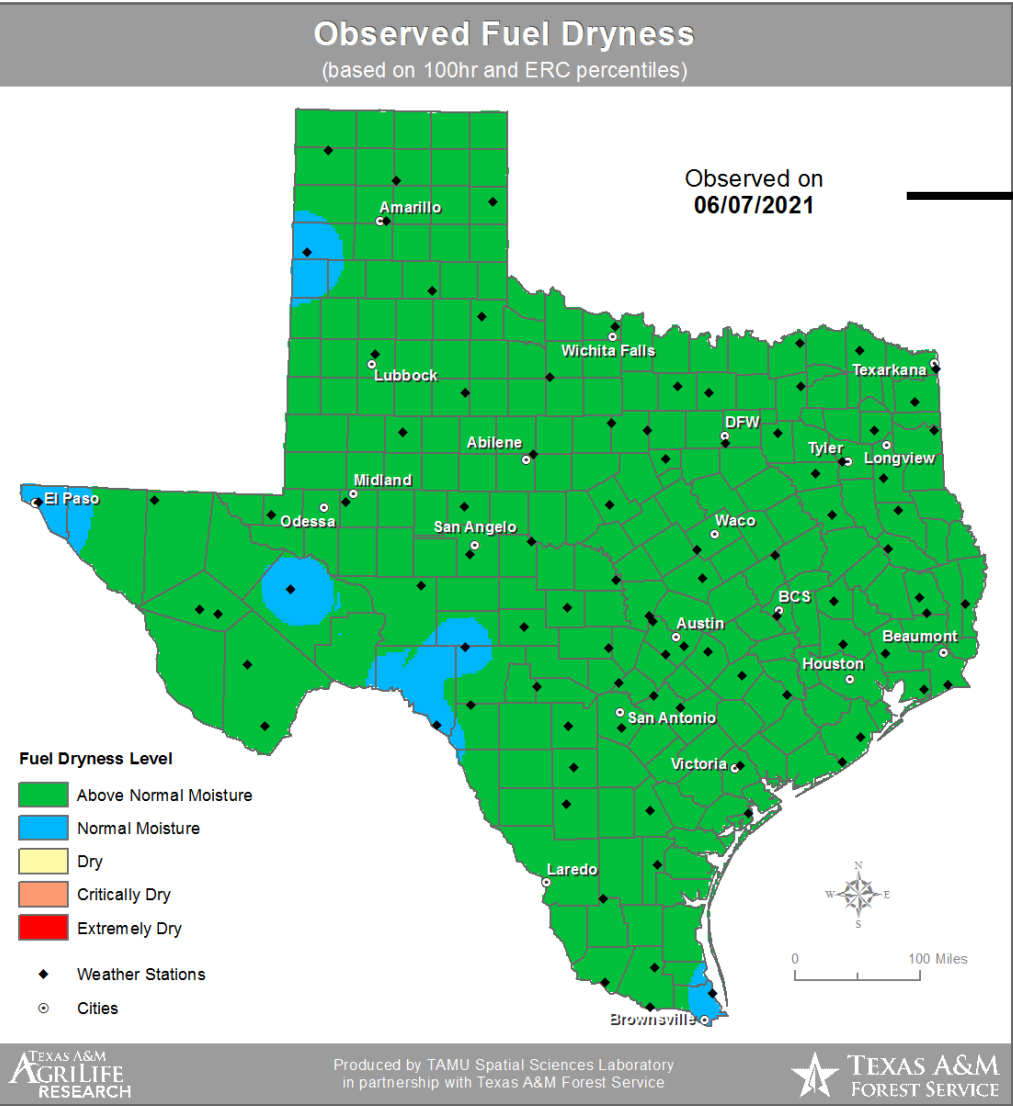


The rainfall footprint over the past 7-days has been focused over the northern half of Texas, while the rest of the state observed localized rainfall or been dry. Typically during the summer months, several drying clocks are ongoing across the state based on separate rainfall events.

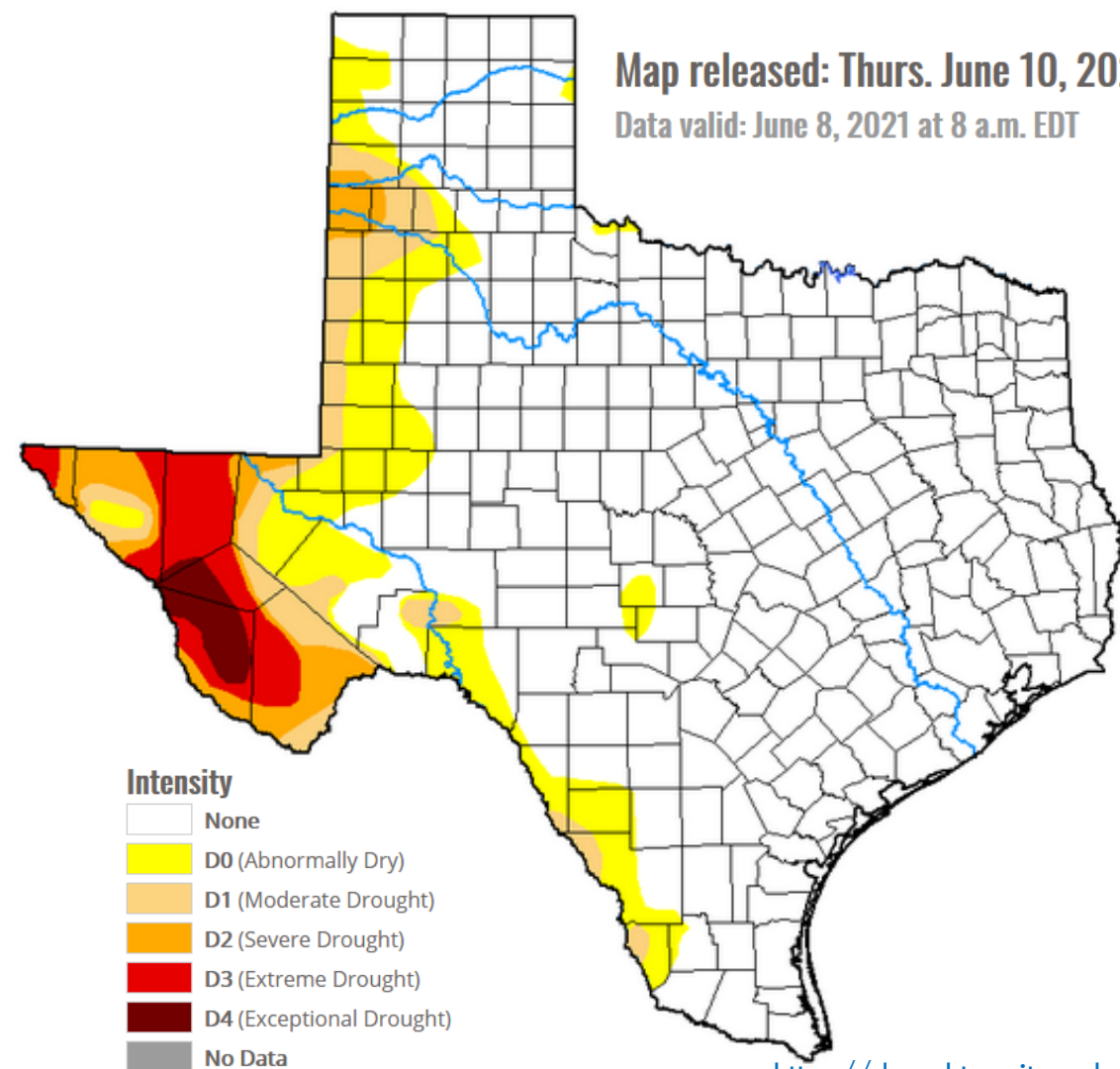
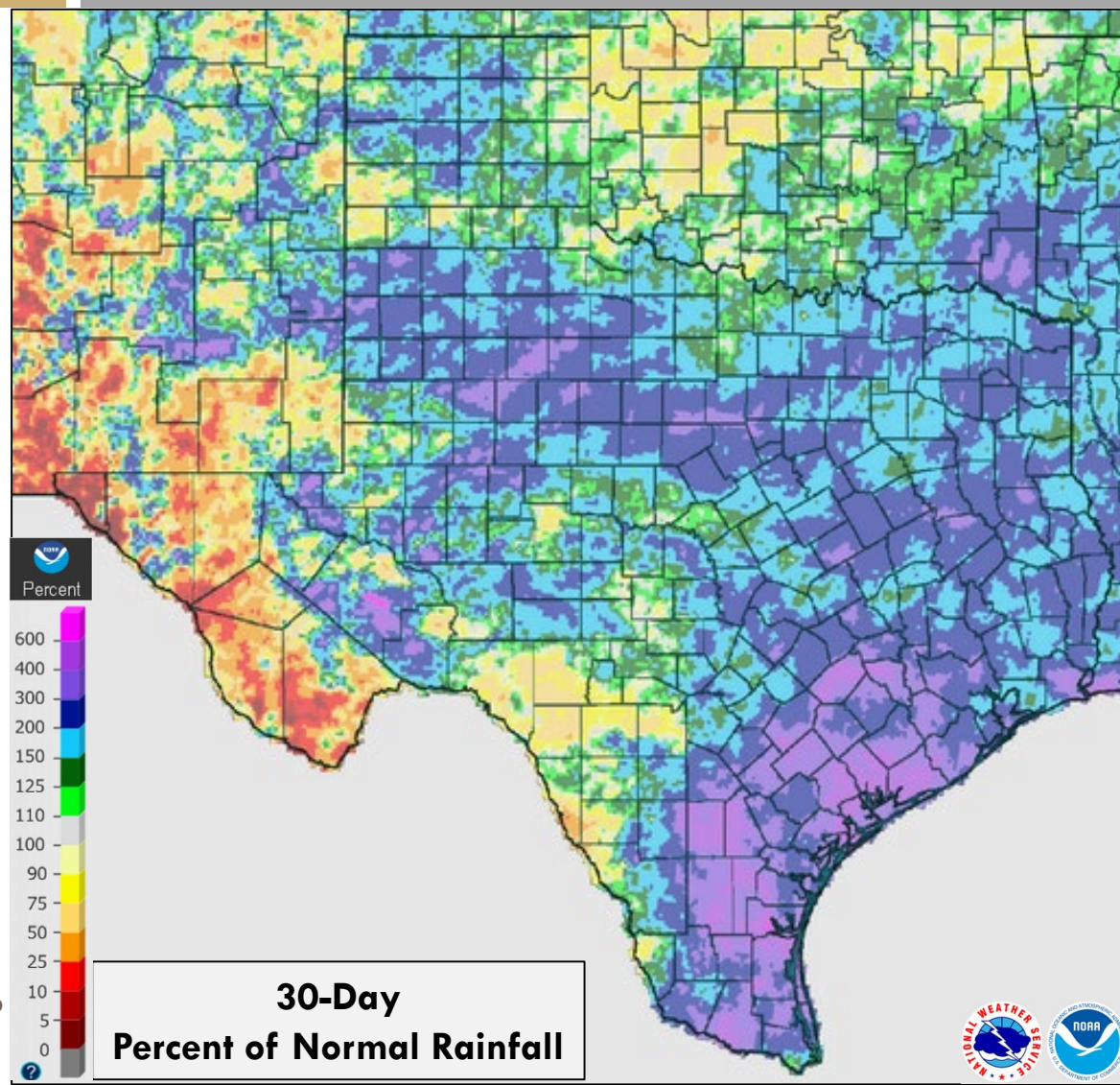




The 7-day rainfall footprint has helped keep dead fuel moisture above normal for northern Texas. Elsewhere, a warm and dry fire environment has resulted in dead fuel moisture decreasing to normal. The combination of green herbaceous fuel and normal to above normal dead fuel moisture should keep initial attack potential low through the week. The mountains in the Trans Pecos remain cured, but the lack of dry thunderstorms will keep IA potential low.



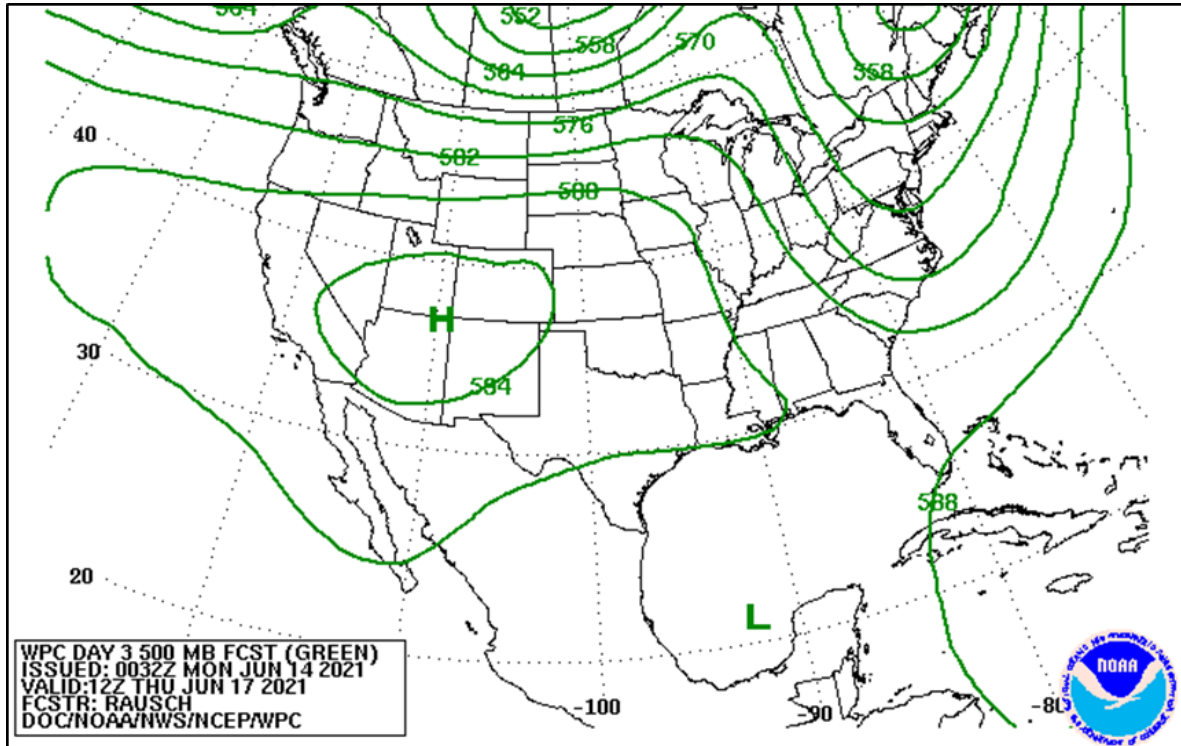
Surplus rainfall over the past month should provide adequate soil moisture to keep herbaceous fuel green for the next several weeks. Based on the June 8th US Drought Monitor, only 23% of the state is observing some level of abnormal dryness or drought. Extreme to exceptional drought remains in the parts of the Trans Pecos.



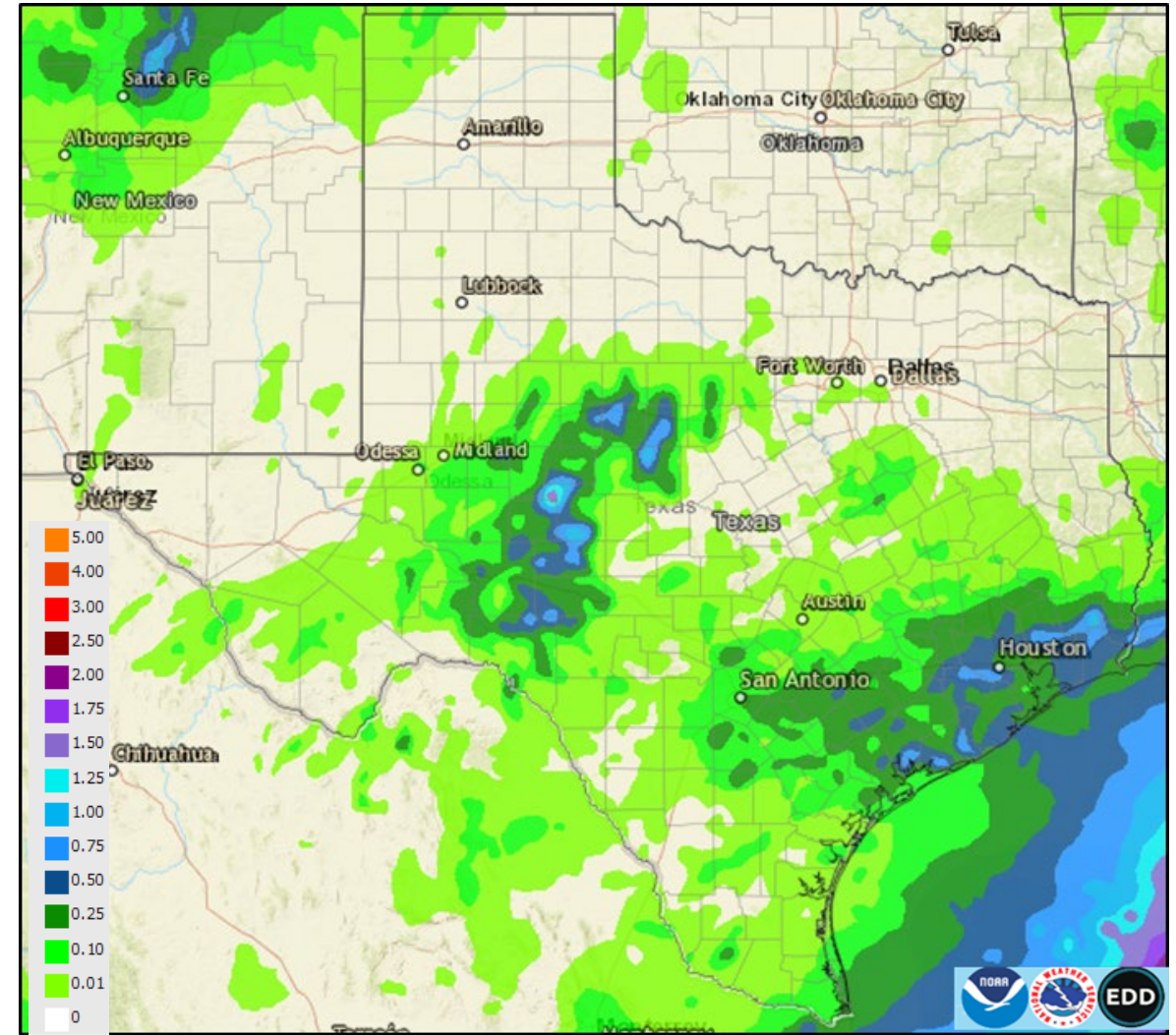
An upper level ridge of high pressure over the Four Corners region and Intermountain West will result in generally warm and dry conditions across the state through Friday. A few isolated storms are possible in the Rolling Plains and Western Hill Country Monday. Some localized afternoon showers and thunderstorms will be possible along the Upper Coast during the week.



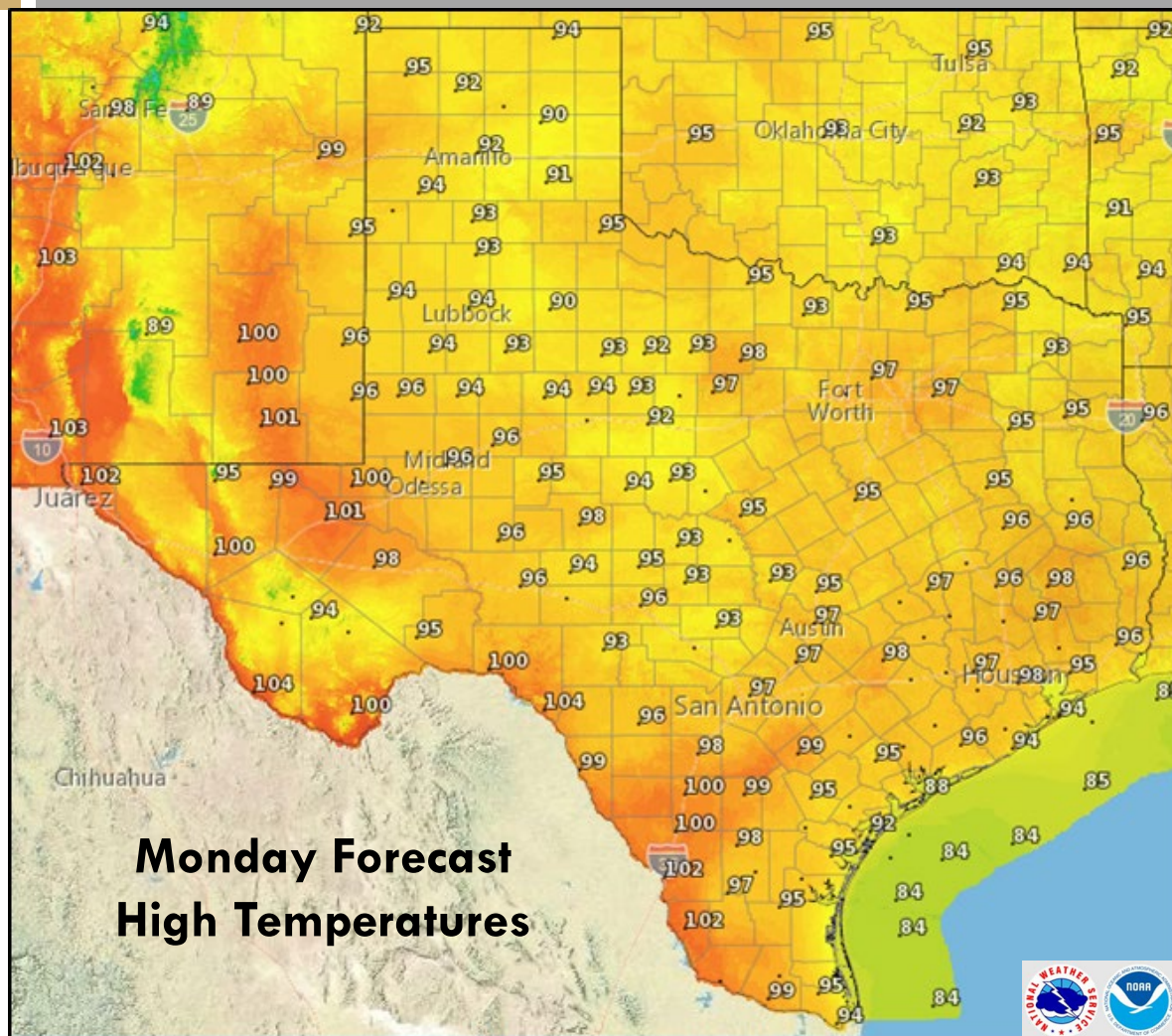
Thursday Upper Air (500mb) Forecast



Monday through Friday Rainfall Forecast

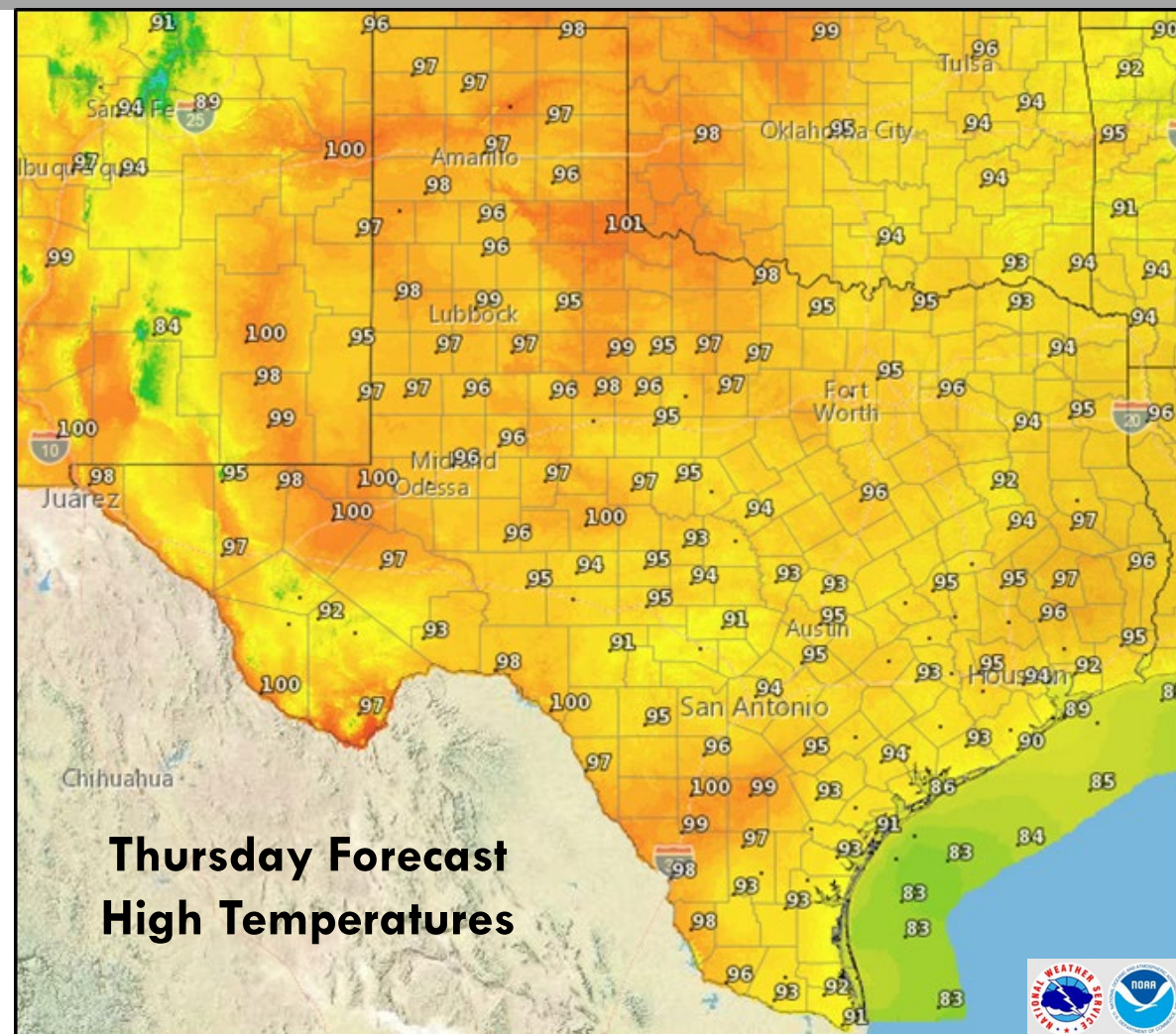


Max temperatures are forecast to trend above normal for much of the state during the week. The warm and mostly dry conditions will promote moderate drying potential in dead surface fuels.



**Monday Forecast
High Temperatures**

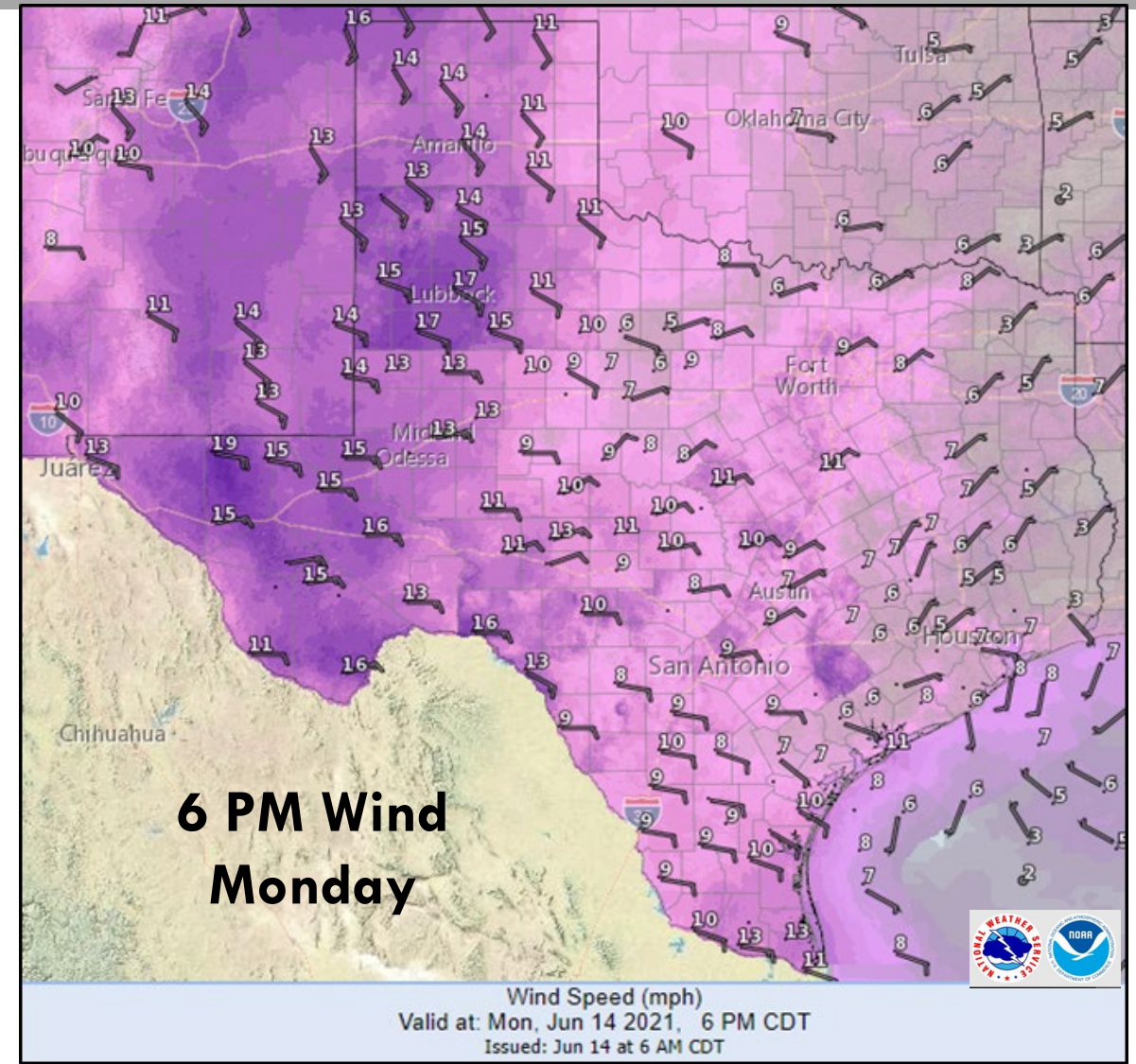
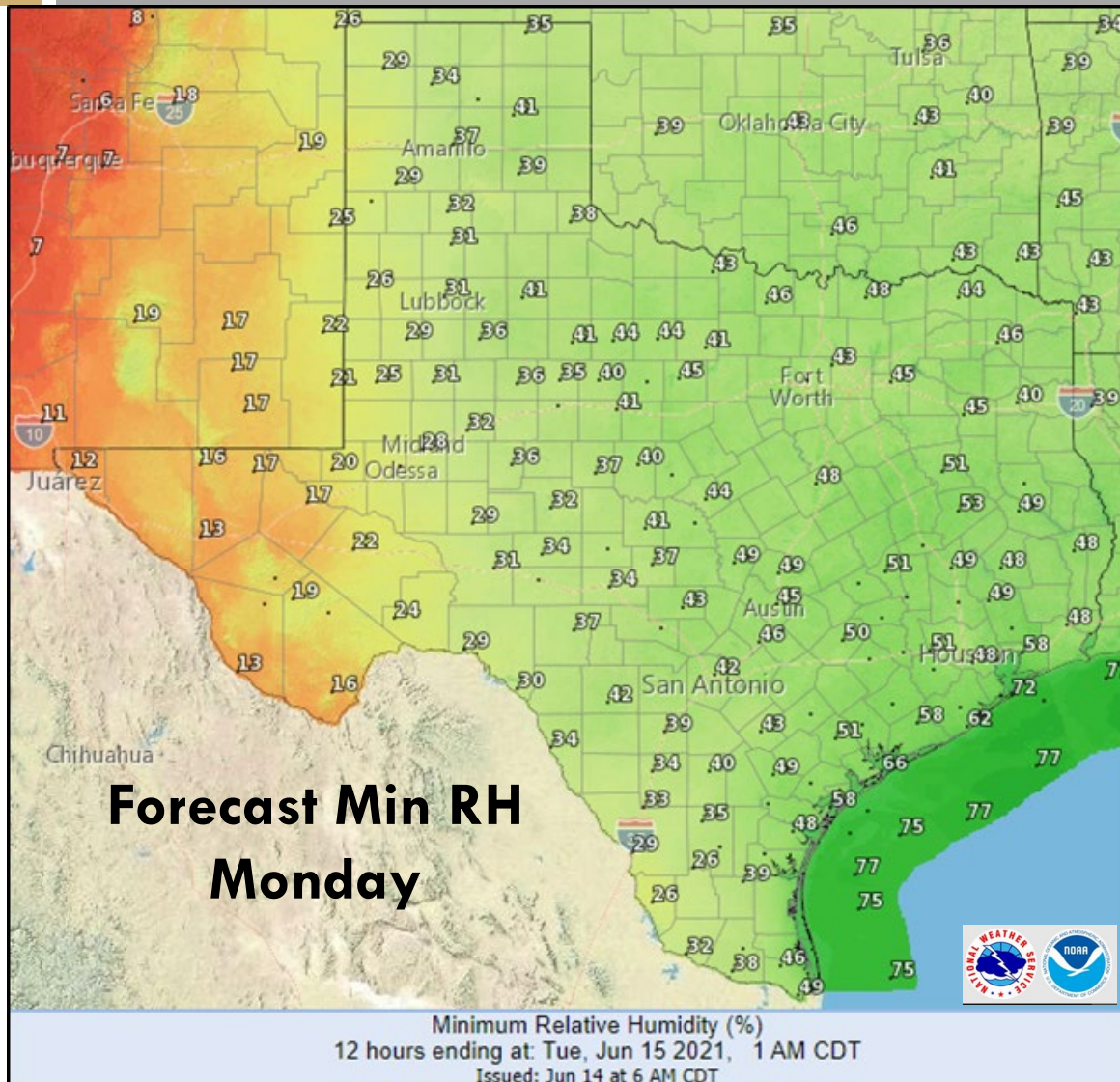
Maximum Temperature (°F)
Daytime High for: Mon, Jun 14 2021, 7 PM CDT
Issued: Jun 14 at 5 AM CDT



**Thursday Forecast
High Temperatures**

Maximum Temperature (°F)
Daytime High for: Thu, Jun 17 2021, 7 PM CDT
Issued: Jun 14 at 1 AM CDT

Monday's fire environment will be similar to what is forecast for the rest of the week. Easterly flow will help filter slightly drier air into East Texas and promote moderate drying in timber litter fuel.

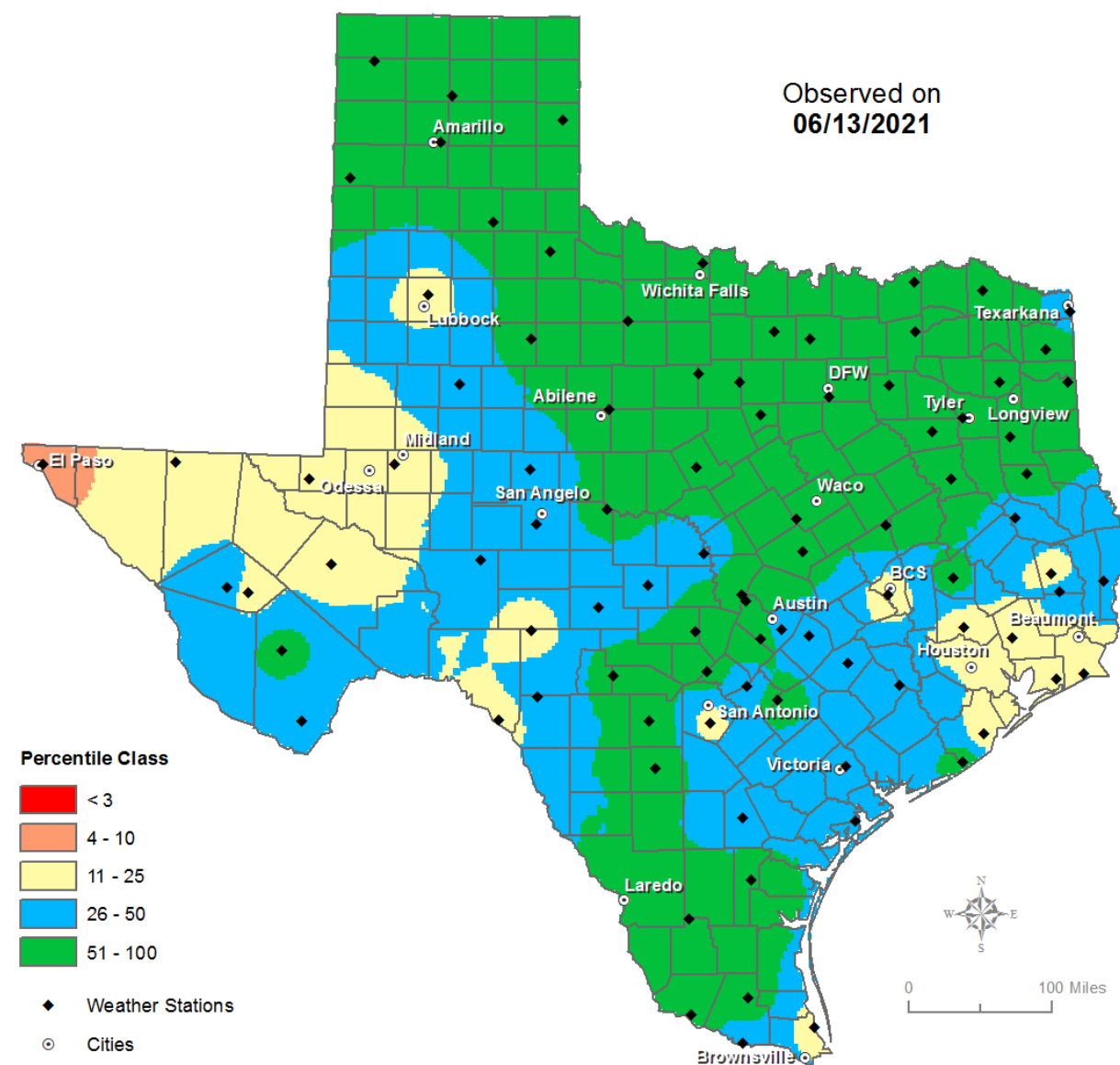




100-hr fuel moisture at or below the 25th percentile (yellow) provides guidance on where timber/brush litter fuels are receptive to wildfire ignitions and spread. The warm and dry fire environment will promote further drying of 100-hr fuel moisture across East Texas through Friday. Overall, initial attack potential should remain low.

Lower 100-hr fuel moisture near Midland/Odessa and near Del Rio should be countered by green herbaceous fuel, keeping IA potential low.

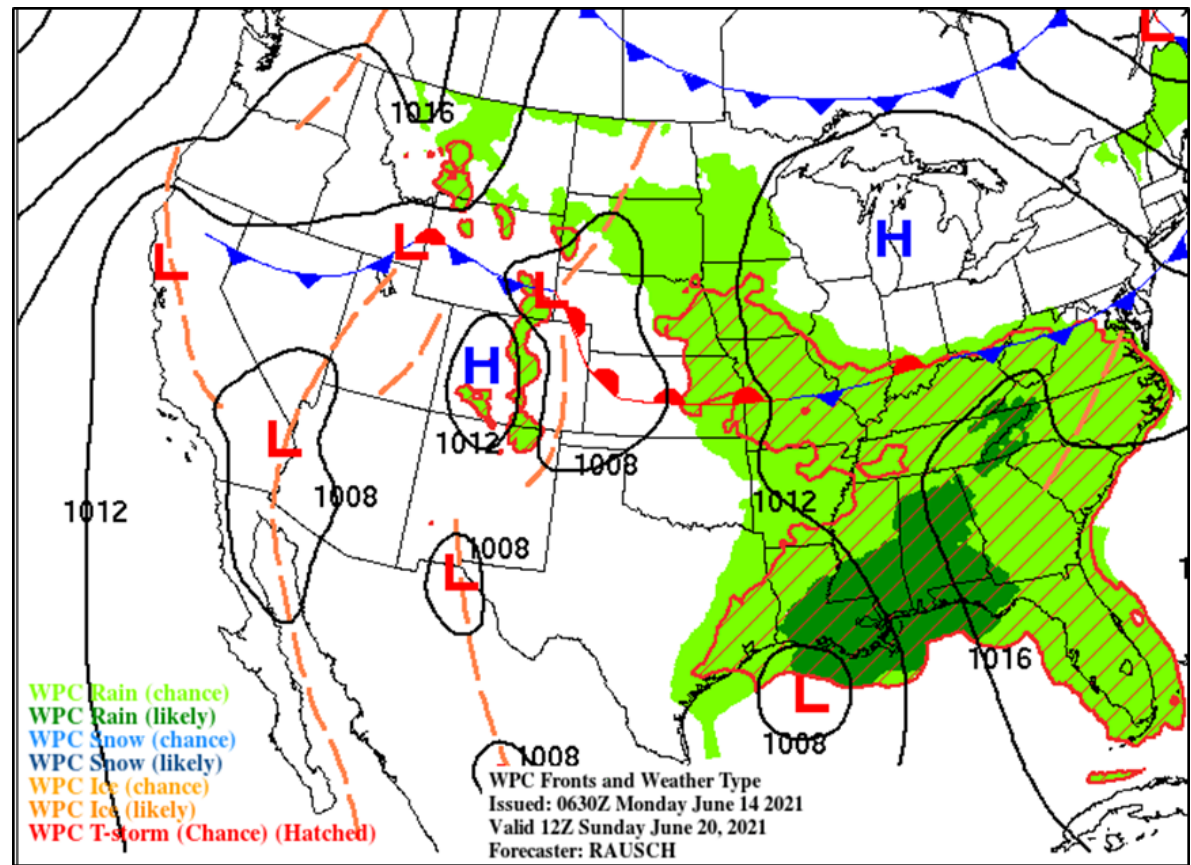
Observed 100 Hour Fuel Moisture Percentile



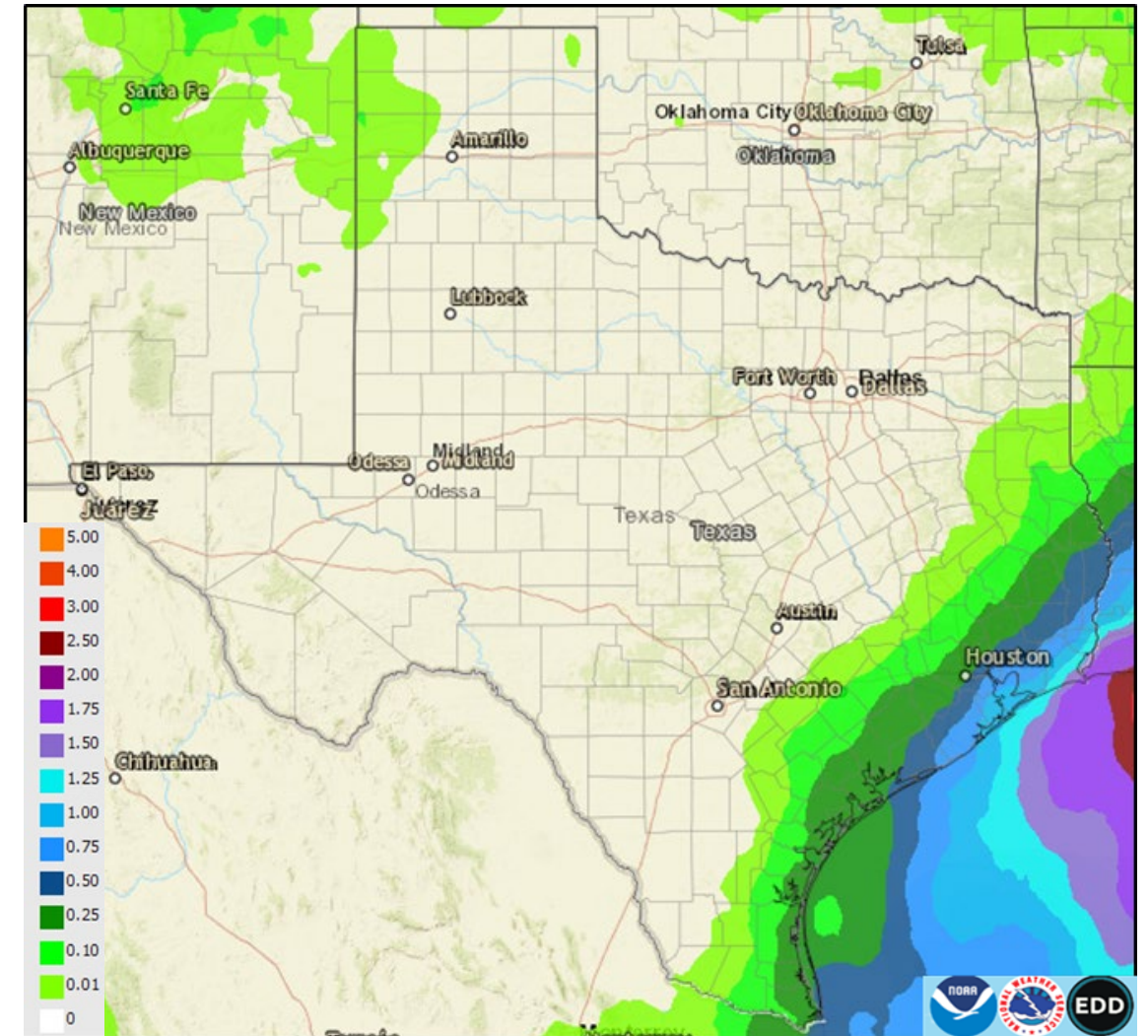


A tropical system may form over the western Gulf of Mexico late this week, then pull northward towards the Louisiana coast over the weekend. Much of the rainfall from this system is currently forecast to move towards Louisiana and the central US Gulf Coast. Some wrap-around showers are possible along the Texas Gulf Coast and southern parts of East TX. Much of the state will be dry away from the TX Gulf Coast this weekend. Please monitor the [National Hurricane Center's](#) forecast this week for any tropical development.

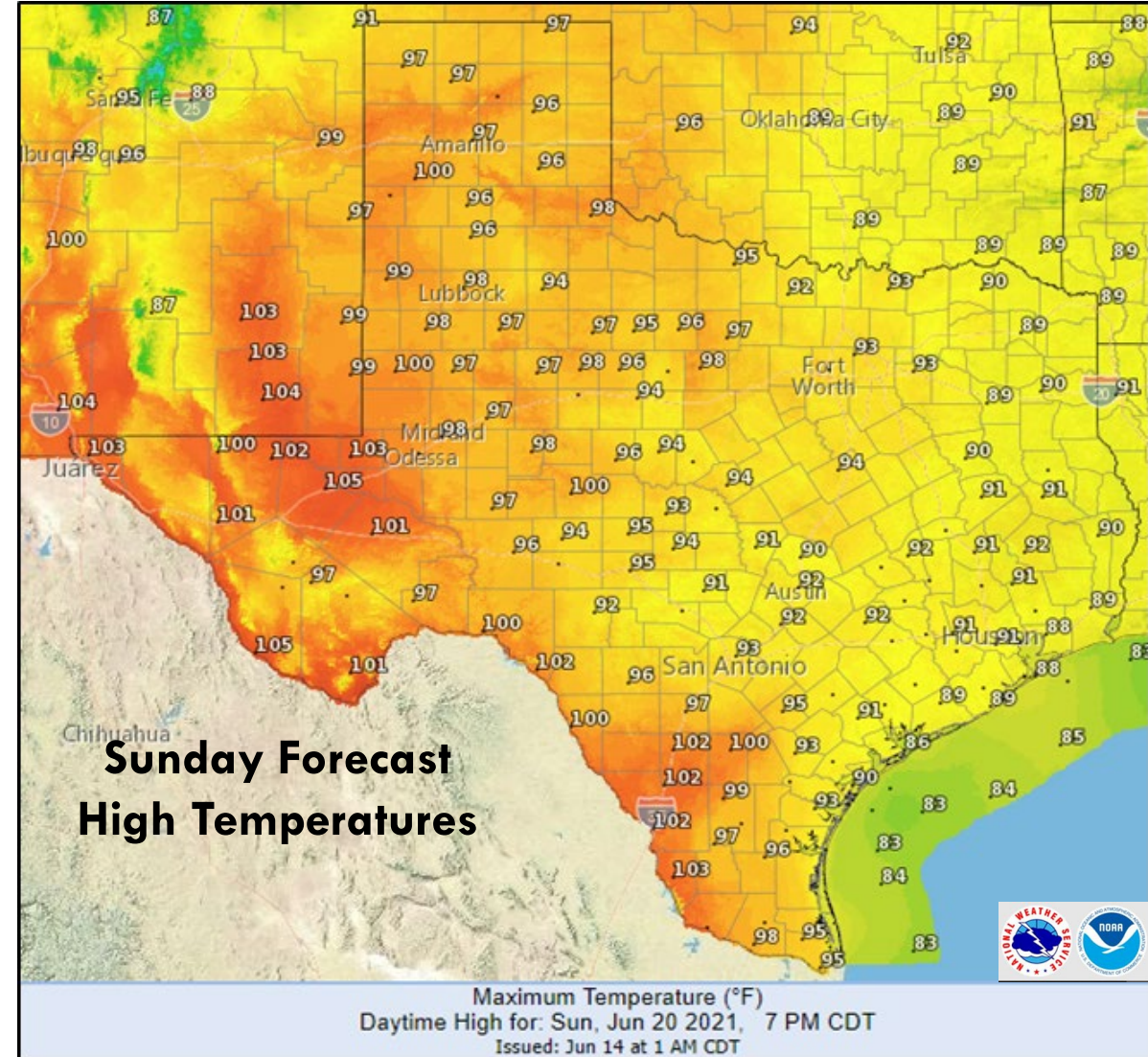
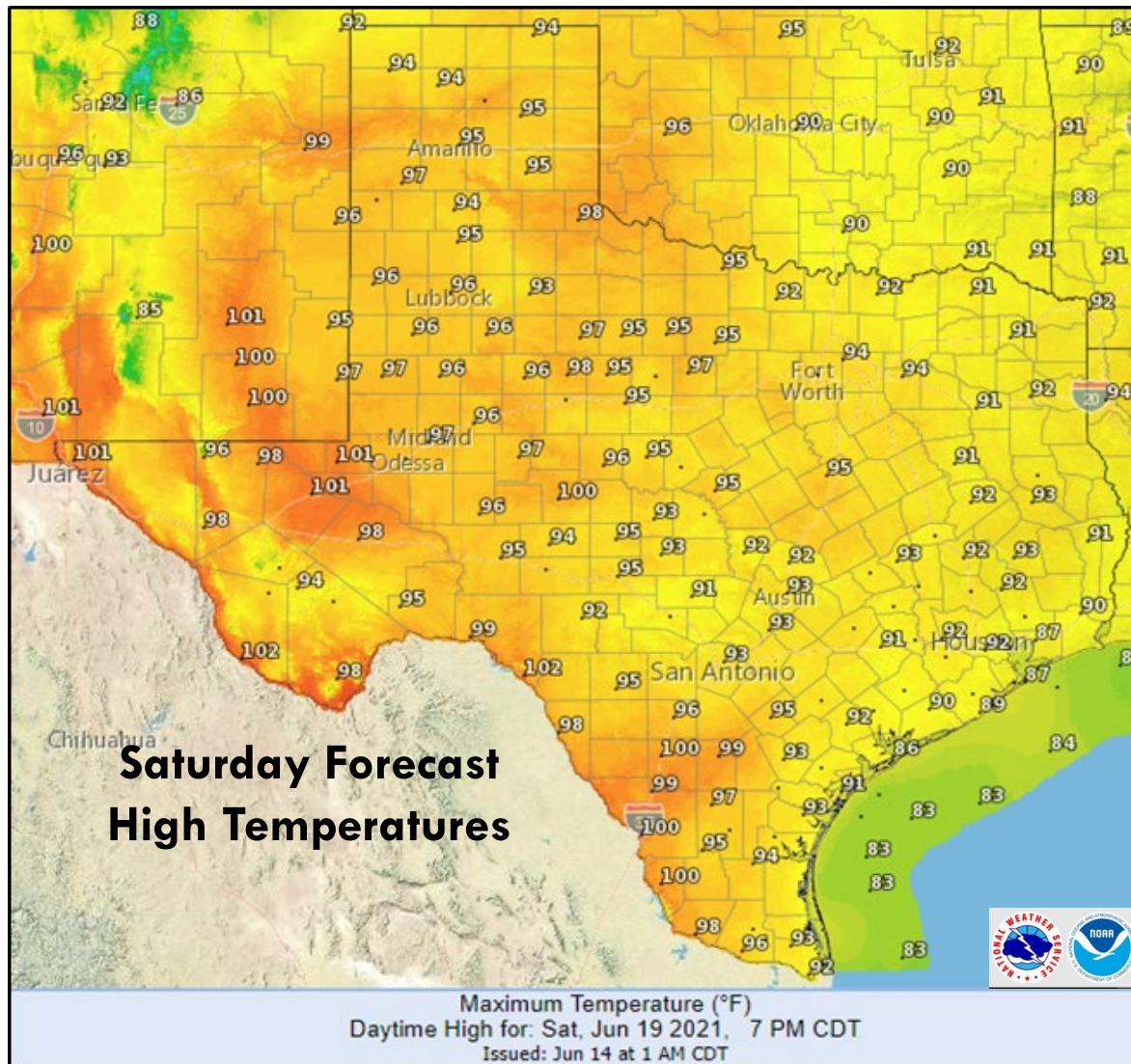
Sunday Morning Surface Forecast



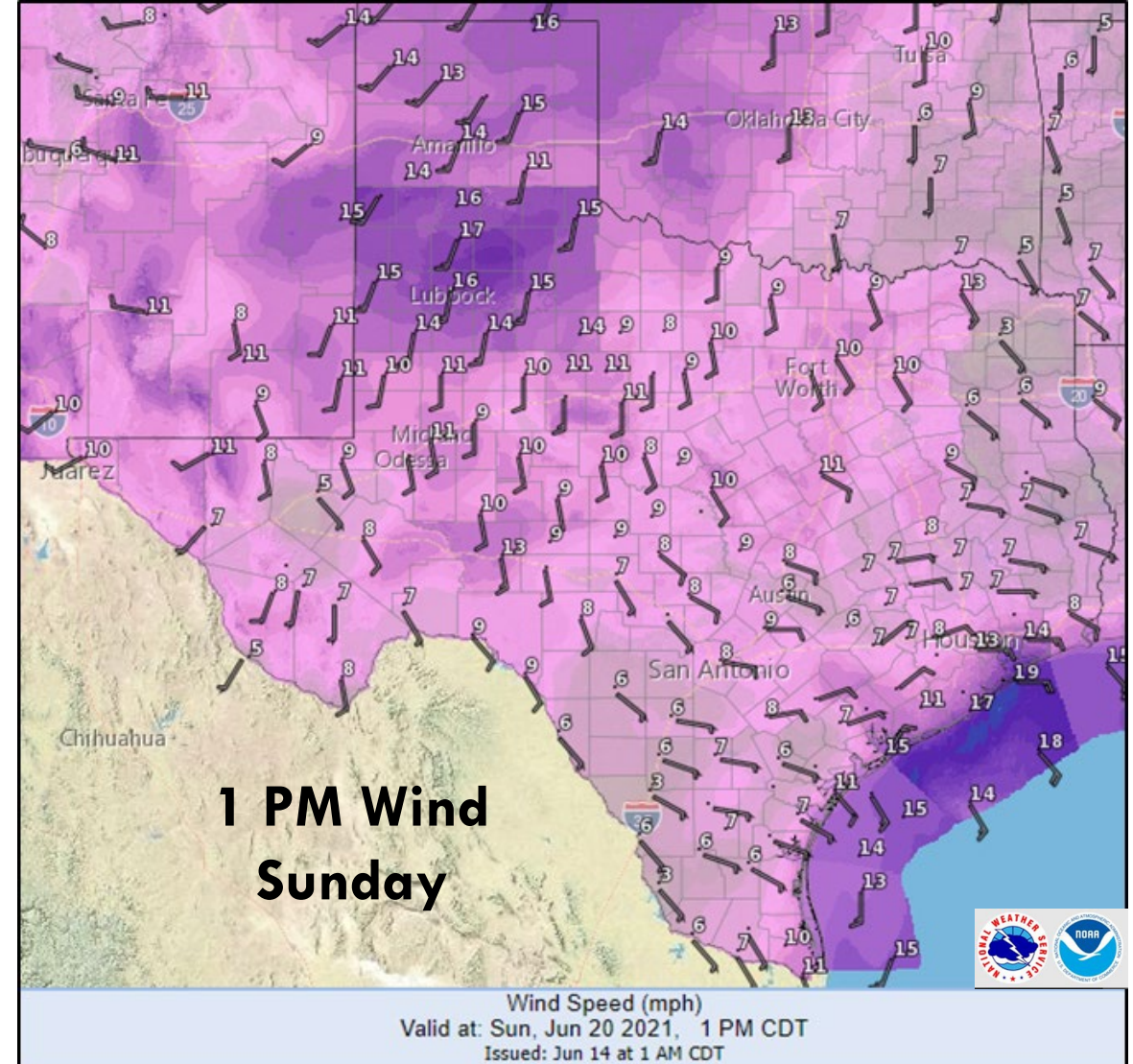
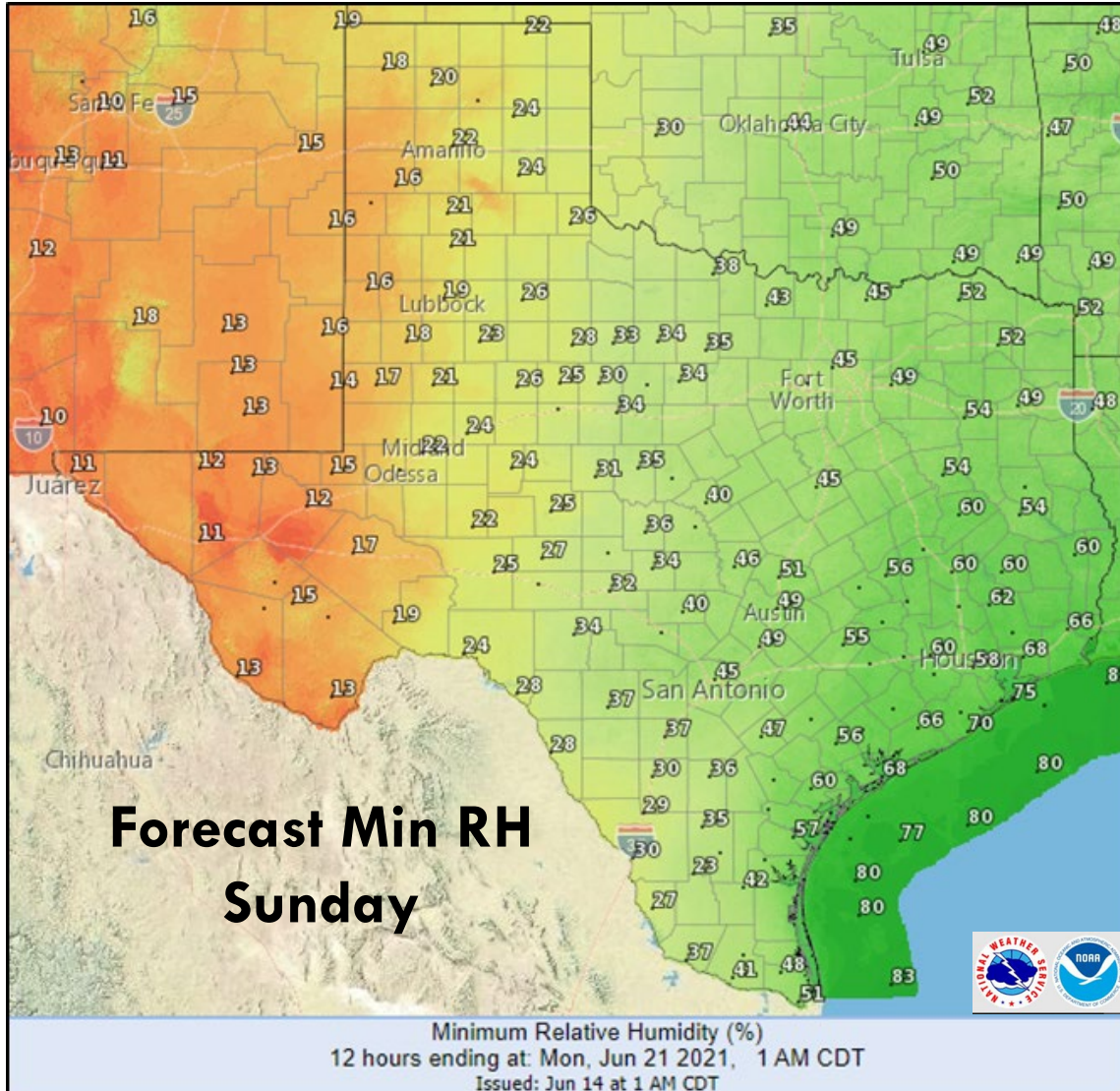
Saturday through Sunday Rainfall Forecast



Increased cloud cover and showers will likely decrease temperatures to near normal in East Texas and along the Gulf Coast. Max temperatures are forecast to remain above normal for the rest of the state over the weekend.

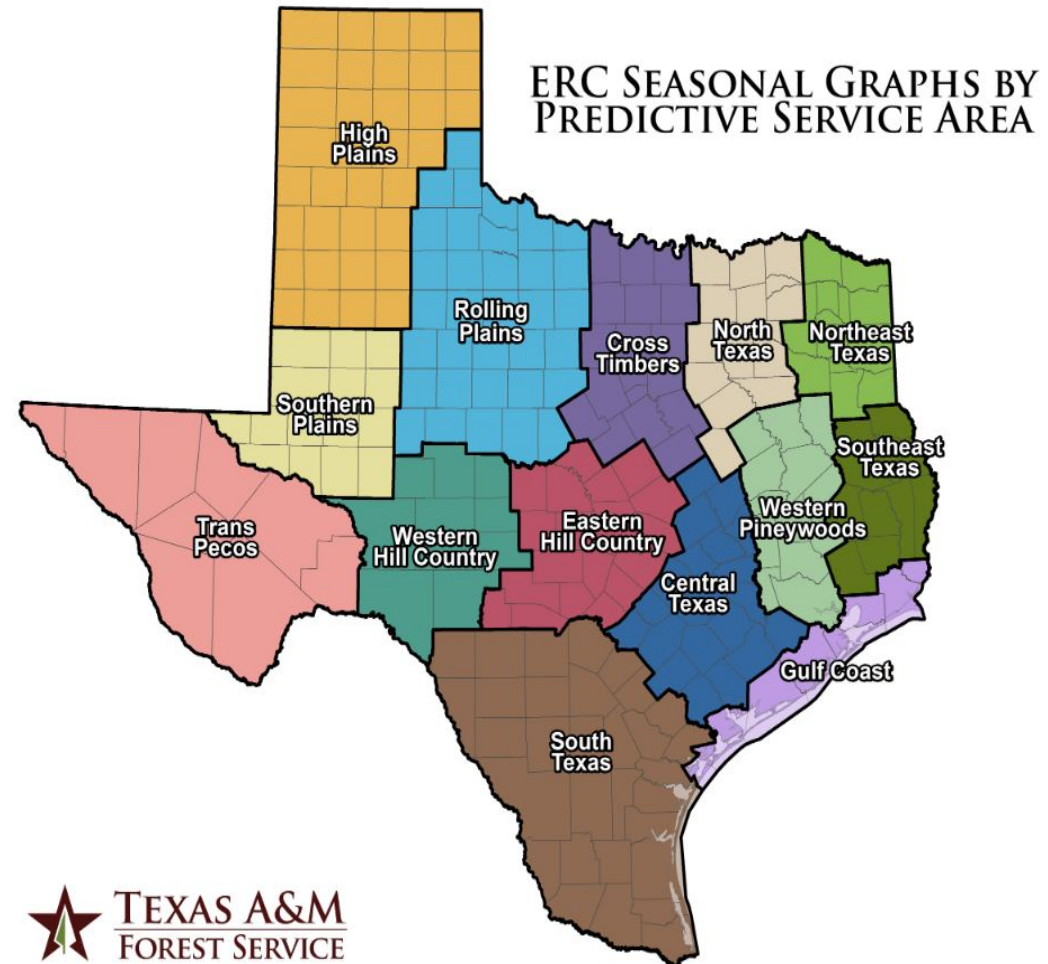


No elevated or critical fire weather is forecast to the west of the tropical system this weekend. The presence of green herbaceous fuel and normal to above normal fuel moisture will support low initial attack potential across the state this weekend.



Even with the drying that occurred over the past week, all predictive service areas (PSA) seasonal energy release component (ERC) values are trending below normal. This week's warm and dry fire environment will likely support moderate drying potential for most PSAs resulting in increasing ERC values. ERC trends may return to near normal in several PSAs this weekend.

PSA	Observed
High Plains	Below Normal
Southern Plains	Below Normal
Trans Pecos	Below Normal
Western Hill Country	Below Normal
Rolling Plains	Below Normal
Eastern Hill Country	Below Normal
Cross Timbers	Below Normal
Central Texas	Below Normal
North Texas	Below Normal
Western Pineywoods	Below Normal
Northeast Texas	Below Normal
Southeast Texas	Below Normal
South Texas	Below Normal
Gulf Coast	Below Normal



[Link to ERC Seasonal Graphs](#)



The Trans Pecos ERC will likely trend near or slightly above normal with warm and dry conditions forecasted this week. ERC values are increasing across Southeast Texas, but still well below normal for mid-June. ERC values will likely increase in East Texas this week before cloud cover, cooler temperatures, and increased surface moisture return this weekend.

