



# Texas Crop Progress and Condition

Southern Plains Regional Field Office  
Post Office Box 70 Austin, Texas 78767  
(800) 626-3142 · FAX (855) 270-2725 · www.nass.usda.gov/tx

**Issue: TX-CW1321**

**Weekly Summary for April 12-April 18**

**Released: April 19, 2021**

Most of the state received from trace amounts to upwards of 3.0 inches of precipitation. Some areas in the Blacklands, East Texas, and the Upper Coast received up to 5.0 inches. Precipitation was needed throughout the state as drought conditions persisted in many areas. There were 5.5 days suitable for fieldwork.

**Small Grains:** Small grains were reported in various stages and conditions across the state. Small grains needed more moisture in many areas of the state. Irrigated winter wheat in the Northern High Plains progressed and was nearing the flag leaf stage. Winter wheat was being harvested for hay and silage in some areas of the Cross Timbers. Meanwhile, in North East Texas winter wheat was progressing well. Hay producers were preparing for the first major cutting in South Texas.

**Row Crops:** In the Northern Low Plains, preparations were underway for cotton planting in the upcoming weeks. Irrigated corn was reportedly looking good in the Cross Timbers. Corn and grain sorghum were off to a good start in the Blacklands. In Edwards Plateau corn and grain sorghum had progressed but could use some precipitation. Row crop farmers in South Central Texas and the Coastal Bend saw some precipitation but needed more. Rice and cotton planting progressed in the Upper Coast. Cotton planting continued in South Texas. Drought conditions in the Lower Valley were negatively affecting row crops.

**Fruit, Vegetable and Specialty Crops:** Producers worked on planting watermelon and tomatoes in North East Texas. Strawberry harvest continued in South Texas.

**Livestock, Range and Pasture:** Supplemental feeding continued across the state. Rainwater runoff was needed in the Blacklands and South Central Texas to fill tanks for livestock. Feral hogs continued to be a problem in East Texas, as South East Texas saw a large increase in fly population. Farmers continued working lambs and kid goats in Edwards Plateau. Producers in South Texas had begun to cull cattle herds in response to dry conditions. Pasture and range condition was rated mostly poor to fair, though pasture conditions varied greatly across the state.

**Crop Condition**

Crop	Percent of Acreage					Index <sup>1</sup>	
	Excellent	Good	Fair	Poor	Very Poor	2021	2020
Corn	8	39	42	9	2	71	50
Rice	8	67	24	1	0	84	79
Wheat	8	20	36	21	15	54	75
Oats	0	20	29	26	25	43	79
Range and Pasture	1	15	27	33	24	40	74

<sup>1</sup> The formula for the condition index is  $I = (5V + 25P + 60F + 90G + 110E)/100$  where I = crop condition index and V, P, F, G, E = percentage of crop rated very poor, poor, fair, good, excellent.

### Crop Progress

Stage	Percent of Acreage			
	Current Week	Previous Week	Previous Year	5 Year Average
Corn				
Planted	60	57	64	59
Emerged	51	48	50	47
Cotton				
Planted	16	13	17	13
Rice				
Planted	79	70	82	71
Emerged	60	47	70	55
Sorghum				
Planted	51	49	63	59
Soybeans				
Planted	15	(NA)	(NA)	(NA)
Winter Wheat				
Headed	41	26	50	45
Oats				
Headed	56	45	52	57

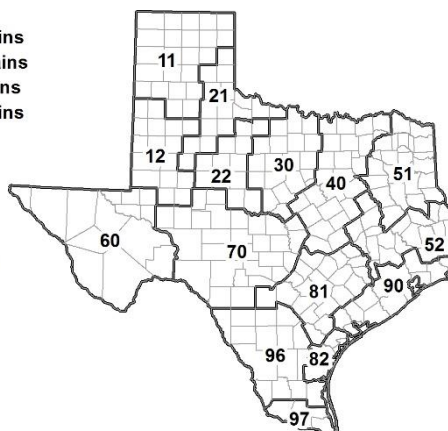
(NA) Not available.

### Soil Moisture and Days Suitable by District

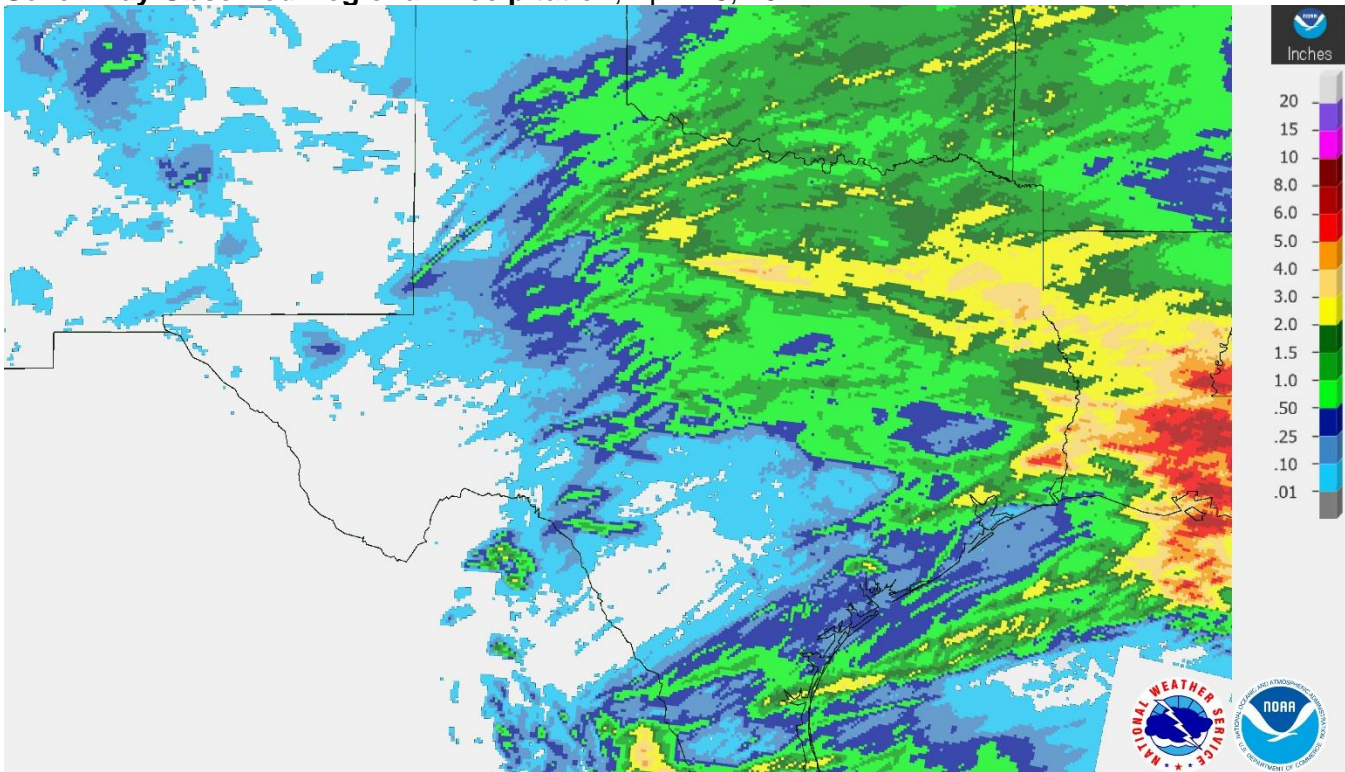
District	Topsoil Moisture Condition by District				Subsoil Moisture Condition by District				Days Suitable for Fieldwork
	Percentage of Acreage				Percentage of Acreage				
	Very Short	Short	Adequate	Surplus	Very Short	Short	Adequate	Surplus	
11	25	47	27	1	30	33	37	0	5.2
12	28	45	27	0	28	67	5	0	6.4
21	4	24	69	3	4	30	66	0	3.5
22	18	42	40	0	20	43	25	12	4.7
30	4	32	57	7	5	36	58	1	4.8
40	6	40	46	8	13	42	45	0	5.0
51	1	25	53	21	1	28	56	15	6.1
52	2	31	65	2	1	29	68	2	6.2
60	20	35	45	0	20	21	59	0	5.9
70	21	62	16	1	22	63	15	0	5.9
81	44	32	24	0	40	27	33	0	6.7
82	29	47	24	0	22	39	39	0	6.2
90	0	20	77	3	0	10	85	5	4.8
96	69	27	4	0	70	27	3	0	6.5
97	78	20	2	0	71	20	9	0	6.1
State	21	39	37	3	22	40	36	2	5.5

### Texas Agricultural Districts

- 11 Northern High Plains
- 12 Southern High Plains
- 21 Northern Low Plains
- 22 Southern Low Plains
- 30 Cross Timbers
- 40 Blacklands
- 51 North East
- 52 South East
- 60 Trans-Pecos
- 70 Edwards Plateau
- 81 South Central
- 82 Coastal Bend
- 90 Upper Coast
- 96 South
- 97 Lower Valley

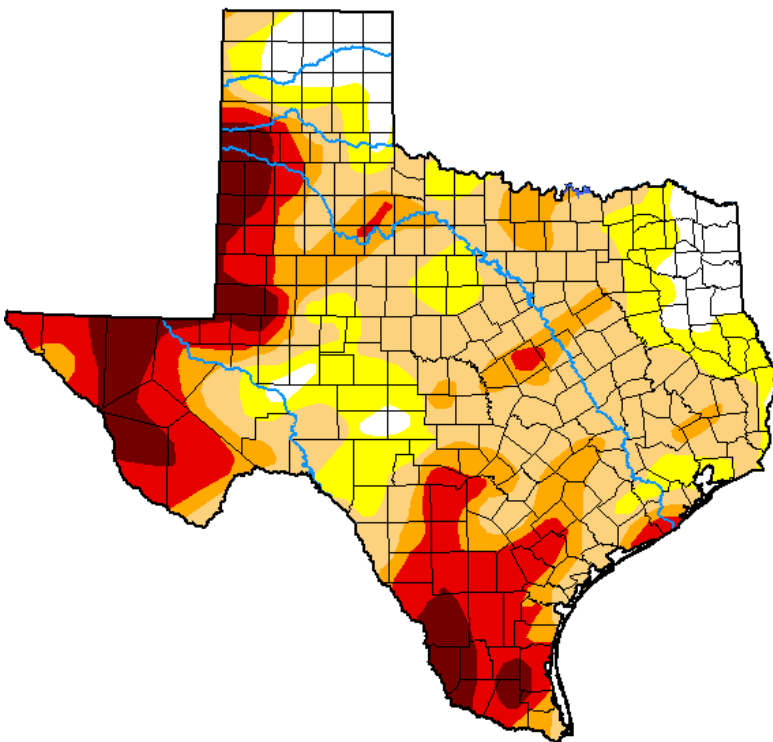


**Seven Day Observed Regional Precipitation, April 18, 2021.**



Source: National Weather Service, [www.nws.noaa.gov](http://www.nws.noaa.gov).

**Drought Monitor, Valid April 13, 2021.**



*Drought Conditions (Percent Area)*

	None	D0-D4	D1-D4	D2-D4	D3-D4	D4
<b>Current</b>	8.22	91.78	75.19	39.61	24.29	8.53
<b>Last Week</b> <i>04-06-2021</i>	8.55	91.45	74.46	38.46	23.57	8.53
<b>3 Months Ago</b> <i>01-12-2021</i>	31.29	68.71	48.01	32.25	18.61	5.97
<b>Start of Calendar Year</b> <i>12-29-2020</i>	8.80	91.20	81.10	50.33	30.09	13.03
<b>Start of Water Year</b> <i>09-29-2020</i>	57.35	42.65	31.96	20.91	12.02	3.29
<b>One Year Ago</b> <i>04-14-2020</i>	75.16	24.84	15.93	7.75	1.80	0.14

Intensity:

- None
- D0 Abnormally Dry
- D1 Moderate Drought
- D2 Severe Drought
- D3 Extreme Drought
- D4 Exceptional Drought

*The Drought Monitor focuses on broad-scale conditions. Local conditions may vary. For more information on the Drought Monitor, go to <https://droughtmonitor.unl.edu/About.aspx>*

Author:

Deborah Bathke  
National Drought Mitigation Center



Source: National Drought Mitigation Center, a partnership with USDA, U.S. Department of Commerce/NOAA, <http://droughtmonitor.unl.edu>.