



Texas Crop Progress and Condition

Southern Plains Regional Field Office
Post Office Box 70 Austin, Texas 78767
(800) 626-3142 · FAX (855) 270-2725 · www.nass.usda.gov/tx

Issue: TX-CW1021

Weekly Summary for March 22-March 28

Released: March 29, 2021

Most of the state received from trace amounts to upwards of 2.0 inches of precipitation. Some areas in South Central Texas, the Blacklands, and North East Texas received 3.0 inches up to 5.0 inches. There were 5.3 days suitable for fieldwork.

Small Grains: Small grains were reported in various stages and conditions across the state. Winter wheat producers in the Northern High Plains had begun light irrigation. Wheat farmers were scouting for insects in the Southern Low Plains. Some aphid and greenbug issues in small grains were reported in the Cross Timbers. Meanwhile, warmer weather in the Blacklands helped wheat growth. Small grains were reported in the soft dough stage in areas of South Texas.

Row Crops: Farmers continued preparing fields for planting cotton and peanuts in the Southern High Plains. Field preparation was underway in the Northern Low Plains for cotton planting. Corn and sorghum planting neared completion in areas of the Blacklands. Pre-irrigation for row crops began in the Trans-Pecos. Irrigated corn in Edwards Plateau was coming in well. Meanwhile, fieldwork continued for spring cotton planting in Edwards Plateau. Some farmers began planting cotton with more to follow soon in South Central Texas. Producers had begun applying nitrogen to corn fields in South Central Texas. Corn and grain sorghum planting were almost complete while cotton planting was well underway in the Coastal Bend. Cotton, soybean, and rice planting continued in the Upper Coast. Sorghum planting had begun in South Texas, and cotton planting continued in the Lower Valley.

Fruit, Vegetable and Specialty Crops: Fruit trees continued blooming in the Cross Timbers. Peach, plum, and blueberry fields were doing better than citrus and olive fields in South East Texas after the freeze last month. Pre-irrigation for pecan orchards began in the Trans-Pecos. Meanwhile, in the Lower Valley, onion and sugarcane harvest continued.

Livestock, Range and Pasture: Supplemental feeding continued across the state. Runoff rainwater was still needed in the Cross Timbers, the Blacklands, and South Texas to fill tanks for livestock. Cattle began grazing on pastures in areas of the Blacklands. Feral hogs and an increase in the fly population continued to be a problem in areas of North East Texas. Spring calving, lambing, and kidding season continued in Edwards Plateau. Calves in the Coastal Bend were doing well. Hay producers continued fertilizing and irrigating pastures in the Lower Valley. Pasture and range condition was rated mostly poor to fair, though pasture conditions varied greatly across the state.

Crop Condition

Crop	Percent of Acreage					Index ¹	
	Excellent	Good	Fair	Poor	Very Poor	2021	2020
Wheat	8	20	41	17	14	56	73
Oats	1	12	35	33	19	42	69
Range and Pasture	1	13	33	34	19	42	67

¹ The formula for the condition index is $I = (5V + 25P + 60F + 90G + 110E)/100$ where I = crop condition index and V, P, F, G, E = percentage of crop rated very poor, poor, fair, good, excellent.

Crop Progress

Stage	Percent of Acreage			
	Current Week	Previous Week	Previous Year	5 Year Average
Corn				
Planted	50	38	48	46
Cotton				
Planted	6	(NA)	4	5
Rice				
Planted	39	(NA)	48	33
Sorghum				
Planted	45	34	43	38
Winter Wheat				
Headed	24	23	28	13
Oats				
Headed	16	14	23	17

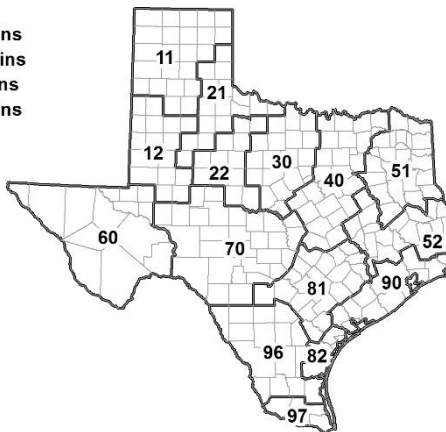
(NA) Not available.

Soil Moisture and Days Suitable by District

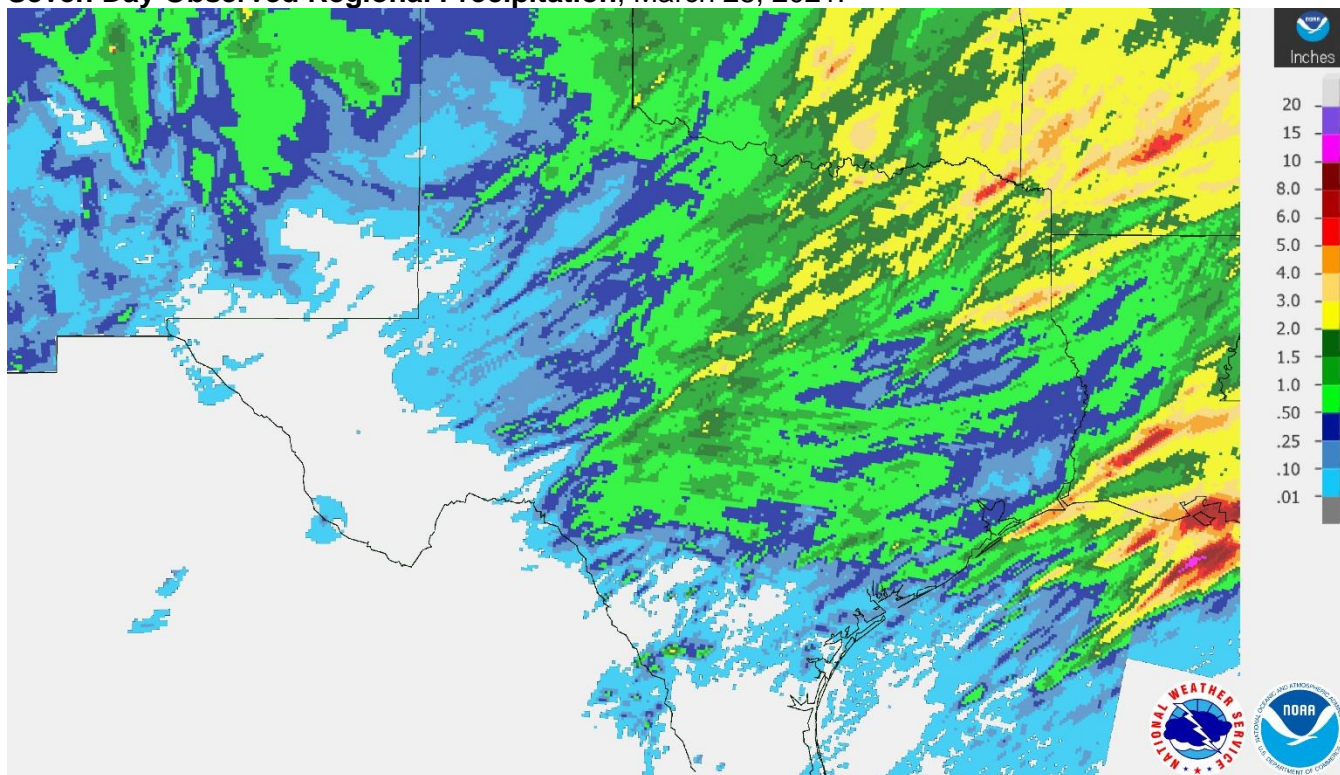
District	Topsoil Moisture Condition by District				Subsoil Moisture Condition by District				Days Suitable for Fieldwork
	Percentage of Acreage				Percentage of Acreage				
	Very Short	Short	Adequate	Surplus	Very Short	Short	Adequate	Surplus	
11	20	39	20	21	27	35	37	1	3.3
12	29	71	0	0	37	63	0	0	6.5
21	2	28	69	1	3	27	70	0	5.8
22	0	50	50	0	0	41	39	20	6.6
30	2	14	83	1	4	23	73	0	4.7
40	4	26	51	19	6	19	63	12	4.5
51	1	8	68	23	1	9	63	27	6.0
52	1	27	70	2	1	23	72	4	6.5
60	9	46	45	0	11	42	47	0	6.2
70	23	39	35	3	23	56	20	1	6.8
81	15	45	40	0	12	50	38	0	6.3
82	18	40	42	0	26	46	28	0	7.0
90	5	8	65	22	6	9	51	34	5.2
96	53	35	12	0	51	37	12	0	6.5
97	81	18	1	0	73	26	1	0	4.8
State	16	39	36	9	19	37	38	6	5.3

Texas Agricultural Districts

- 11 Northern High Plains
- 12 Southern High Plains
- 21 Northern Low Plains
- 22 Southern Low Plains
- 30 Cross Timbers
- 40 Blacklands
- 51 North East
- 52 South East
- 60 Trans-Pecos
- 70 Edwards Plateau
- 81 South Central
- 82 Coastal Bend
- 90 Upper Coast
- 96 South
- 97 Lower Valley

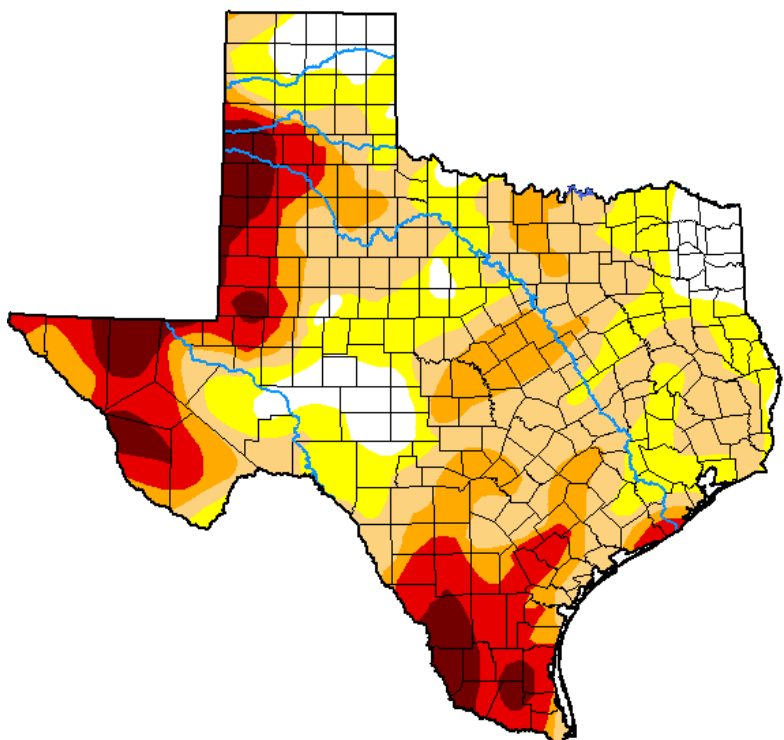


Seven Day Observed Regional Precipitation, March 28, 2021.



Source: National Weather Service, www.nws.noaa.gov.

Drought Monitor, Valid March 23, 2021.



Drought Conditions (Percent Area)

	None	D0-D4	D1-D4	D2-D4	D3-D4	D4
Current	9.70	90.30	67.92	36.19	20.42	6.91
Last Week <i>03-16-2021</i>	9.44	90.56	68.40	37.10	18.41	6.24
3 Months Ago <i>12-22-2020</i>	8.60	91.40	81.17	50.14	29.51	13.03
Start of Calendar Year <i>12-29-2020</i>	8.80	91.20	81.10	50.33	30.09	13.03
Start of Water Year <i>09-29-2020</i>	57.35	42.65	31.96	20.91	12.02	3.29
One Year Ago <i>03-24-2020</i>	73.64	26.36	19.78	14.89	4.44	0.35

Intensity:

- None
- D0 Abnormally Dry
- D1 Moderate Drought
- D2 Severe Drought
- D3 Extreme Drought
- D4 Exceptional Drought

The Drought Monitor focuses on broad-scale conditions. Local conditions may vary. For more information on the Drought Monitor, go to <https://droughtmonitor.unl.edu/About.aspx>

Author:

Brad Pugh
CPC/NOAA



Source: National Drought Mitigation Center, a partnership with USDA, U.S. Department of Commerce/NOAA, <http://droughtmonitor.unl.edu>.