



## Texas Crop Progress and Condition

Southern Plains Regional Field Office  
Post Office Box 70 Austin, Texas 78767  
(800) 626-3142 · FAX (855) 270-2725 · [www.nass.usda.gov/tx](http://www.nass.usda.gov/tx)

**Issue: TX-CW0921**

**Weekly Summary for March 15-March 21**

**Released: March 22, 2021**

Most of the state received from trace amounts to upwards of 1.5 inches of precipitation. Some areas in the Northern High Plains and East Texas received up to 2.0 inches. There were 5.4 days suitable for fieldwork.

**Small Grains:** Small grains were reported in various stages and conditions across the state. Small grains in the High Plains, South Texas, and Edwards Plateau were reported as needing more moisture. Winter wheat improved as a result of precipitation received earlier in March in the Southern Low Plains. Meanwhile, winter wheat continued to recover after the winter storm in February in the Cross Timbers and the Blacklands.

**Row Crops:** Producers began planting corn and preparing fields to plant sorghum in the Southern High Plains. Field preparation for planting corn and cotton is underway in the Northern Low Plains. Fieldwork had begun in preparation for planting sorghum in the Southern Low Plains. Corn planting continued in the Cross Timbers. Meanwhile, corn planting has progressed and is close to complete in the Blacklands and South Central Texas. Corn and sorghum planting continued in Edwards Plateau and South Texas. Cotton and corn planting neared completion in the Coastal Bend. Rice planting continued in the Upper Coast. Cotton planting was halted due to a lack of moisture in certain areas of the Upper Coast and South Texas. Cotton, corn, and sorghum planting continued in the Lower Valley.

**Fruit, Vegetable and Specialty Crops:** Farmers began preparing fields to plant watermelons in the Southern High Plains. Some fruit trees, including peaches, began blooming in the Cross Timbers. Vegetable crops were doing well in South East Texas. Sugarcane harvest progressed as vegetable, watermelon, and other summer fruits were being irrigated.

**Livestock, Range and Pasture:** Supplemental feeding continued across the state. Spring calving season was wrapping up in the Cross Timbers. Spring born calves were doing well in areas of the Blacklands and North East Texas. Feral hogs in hay meadows and pastures continued to be a problem in North East Texas. Meanwhile, the fly population continued to increase in East Texas. Hay reserves were low in the Edwards Plateau. Runoff rainwater was still needed in the Edwards Plateau and South Texas to fill tanks for livestock. Pasture and range condition was rated mostly poor to fair, though pasture conditions varied greatly across the state.

### Crop Progress

Stage	Percent of Acreage			
	Current Week	Previous Week	Previous Year	5 Year Average
Corn Planted	38	26	36	34
Sorghum Planted	34	20	31	28
Winter Wheat Headed	23	22	27	8
Oats Headed	14	13	21	10

### Crop Condition

Crop	Percent of Acreage					Index <sup>1</sup>	
	Excellent	Good	Fair	Poor	Very Poor	2021	2020
Wheat	7	22	42	17	12	58	69
Oats	2	7	34	29	28	38	71
Range and Pasture	1	14	33	33	19	43	64

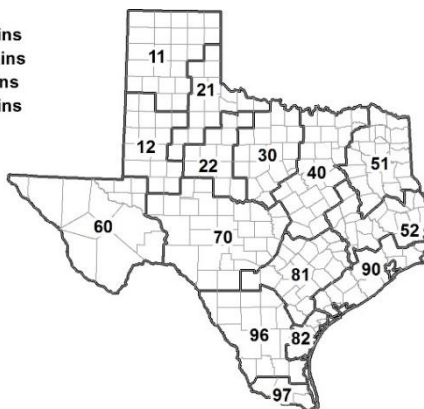
<sup>1</sup> The formula for the condition index is  $I = (5V + 25P + 60F + 90G + 110E)/100$  where I = crop condition index and V, P, F, G, E = percentage of crop rated very poor, poor, fair, good, excellent.

### Soil Moisture and Days Suitable by District

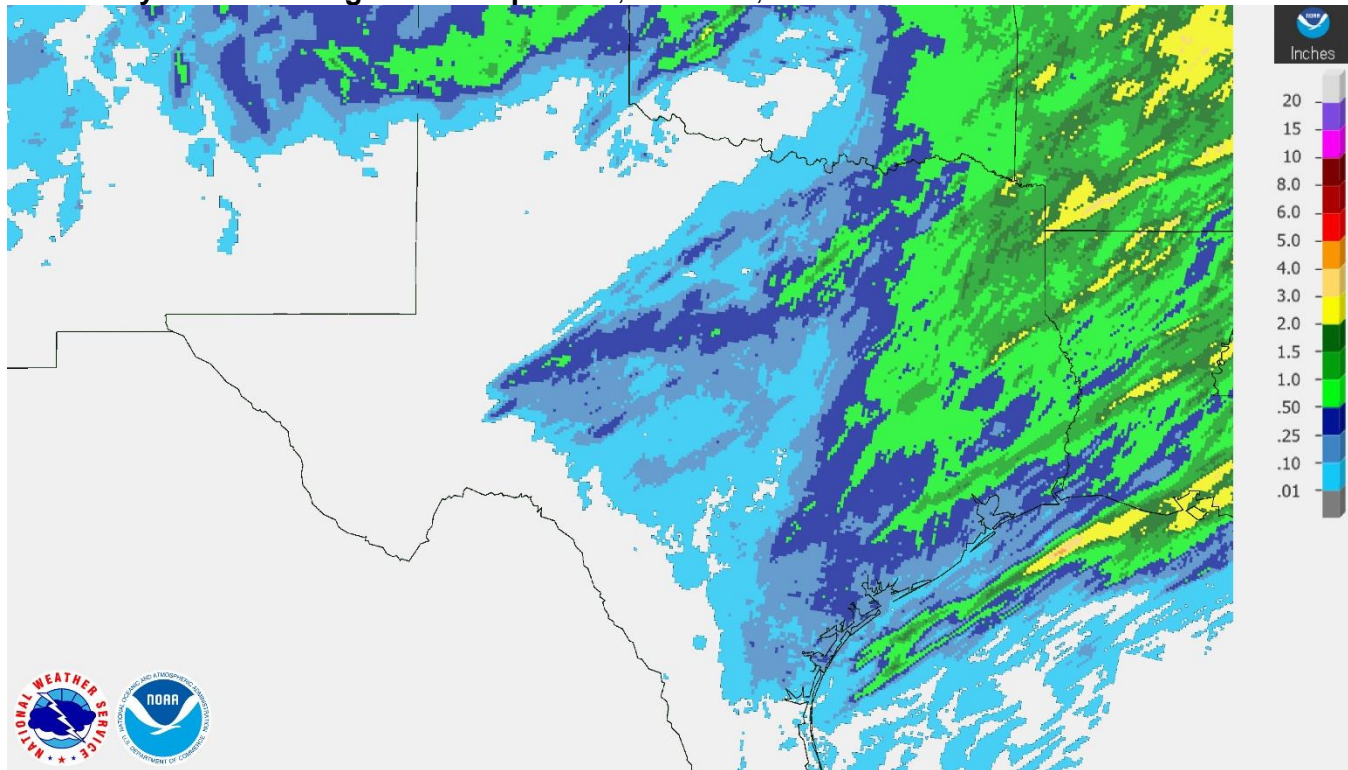
District	Topsoil Moisture Condition by District				Subsoil Moisture Condition by District				Days Suitable for Fieldwork
	Percentage of Acreage				Percentage of Acreage				
	Very Short	Short	Adequate	Surplus	Very Short	Short	Adequate	Surplus	
11	21	30	49	0	31	32	37	0	2.6
12	17	63	20	0	22	59	19	0	5.9
21	1	45	54	0	2	38	60	0	6.5
22	2	40	58	0	0	42	43	15	5.8
30	7	41	52	0	8	33	59	0	6.1
40	4	32	58	6	5	23	64	8	6.5
51	1	4	69	26	1	5	67	27	5.7
52	1	10	81	8	0	12	83	5	6.5
60	13	61	26	0	12	58	30	0	6.2
70	18	63	19	0	17	57	26	0	6.8
81	9	35	56	0	7	35	57	1	6.7
82	13	32	55	0	23	40	37	0	6.6
90	5	9	64	22	6	8	47	39	4.6
96	39	46	15	0	37	49	14	0	6.3
97	65	25	5	5	68	30	2	0	5.4
State	13	38	46	3	16	36	43	5	5.4

### Texas Agricultural Districts

- 11 Northern High Plains
- 12 Southern High Plains
- 21 Northern Low Plains
- 22 Southern Low Plains
- 30 Cross Timbers
- 40 Blacklands
- 51 North East
- 52 South East
- 60 Trans-Pecos
- 70 Edwards Plateau
- 81 South Central
- 82 Coastal Bend
- 90 Upper Coast
- 96 South
- 97 Lower Valley

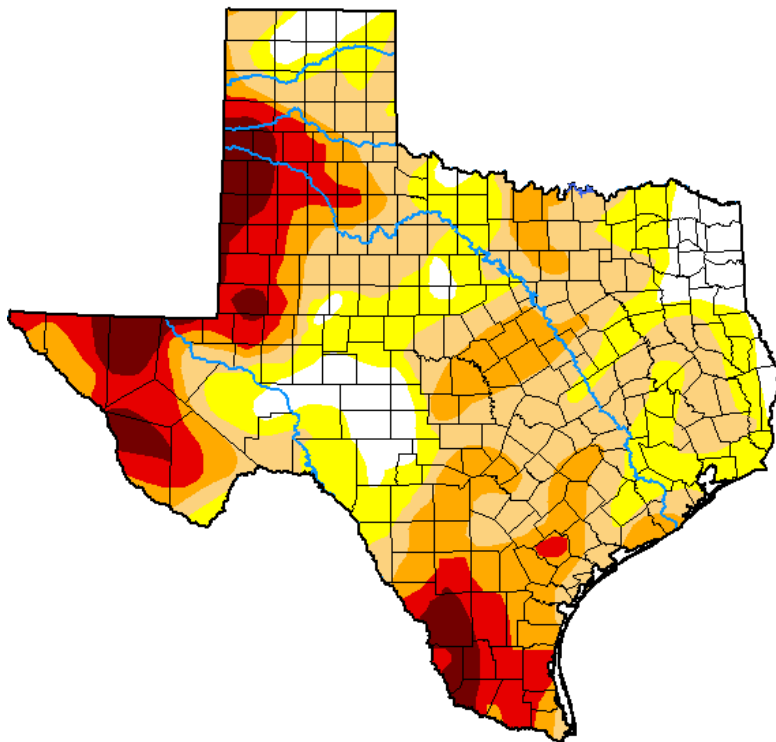


## Seven Day Observed Regional Precipitation, March 21, 2021.



Source: National Weather Service, [www.nws.noaa.gov](http://www.nws.noaa.gov).

## Drought Monitor, Valid March 16, 2021.



*Drought Conditions (Percent Area)*

	None	D0-D4	D1-D4	D2-D4	D3-D4	D4
<b>Current</b>	9.44	90.56	68.40	37.10	18.41	6.24
<b>Last Week</b> 03-09-2021	10.83	89.17	62.49	32.36	18.27	6.10
<b>3 Months Ago</b> 12-15-2020	7.49	92.51	78.41	48.60	27.39	13.03
<b>Start of Calendar Year</b> 12-29-2020	8.80	91.20	81.10	50.33	30.09	13.03
<b>Start of Water Year</b> 09-29-2020	57.35	42.65	31.96	20.91	12.02	3.29
<b>One Year Ago</b> 03-17-2020	69.38	30.62	22.05	15.97	6.96	0.29

Intensity:

- None
- D0 Abnormally Dry
- D1 Moderate Drought
- D2 Severe Drought
- D3 Extreme Drought
- D4 Exceptional Drought

*The Drought Monitor focuses on broad-scale conditions. Local conditions may vary. For more information on the Drought Monitor, go to <https://droughtmonitor.unl.edu/About.aspx>*

Author:

Brad Pugh  
CPC/NOAA



Source: National Drought Mitigation Center, a partnership with USDA, U.S. Department of Commerce/NOAA, <http://droughtmonitor.unl.edu>.