



## Texas Crop Progress and Condition

Southern Plains Regional Field Office  
Post Office Box 70 Austin, Texas 78767  
(800) 626-3142 · FAX (855) 270-2725 · [www.nass.usda.gov/tx](http://www.nass.usda.gov/tx)

Issue: TX-CW0721

Weekly Summary for March 1-March 7

Released: March 8, 2021

Most of the state received from trace amounts to upwards of 1.0 inch of precipitation. Some areas in East Texas received up to 3.0 inches. There were 6.2 days suitable for fieldwork.

**Small Grains:** Small grains were reported in various stages and conditions across the state. Winter wheat producers reported applying top dress fertilizer and herbicide in the Northern High Plains. Wheat was beginning to grow some in the Southern High Plains but more moisture was needed. Meanwhile, some producer's main priority for wheat in the Southern Low Plains was applying top dressing. Small grain crops were slowly improving after the winter storm in some areas of the Cross Timbers, South Central Texas, South Texas, and the Blacklands.

**Row Crops:** Fieldwork continued for cotton, corn, and grain sorghum ground with tillage, pre-plant herbicide, and fertilizer applications in the Northern High Plains. Farmers continued preparing cotton fields for planting in the Southern Plains and Northern Low Plains. Planting of corn, and grain sorghum was underway in areas of the Blacklands where fields were dry enough to allow work. Pre-irrigation was applied to cotton fields in areas of the Trans-Pecos. Corn planting had begun in South Central Texas and South Texas but more topsoil moisture was still needed. Planters were reportedly running at full throttle in parts of the Coastal Bend as producers worked to get corn, cotton, and grain sorghum in the ground. Farmers in the Lower Valley continued planting corn, grain sorghum, and sunflowers.

**Fruit, Vegetable and Specialty Crops:** Some pecan orchards were receiving water in the Trans-Pecos. Farmers were preparing the soil for the next vegetable season and some began planting in South Texas. Pecan orchards were reportedly looking good and being irrigated in South Texas. Vegetable and citrus producers continued to assess the freeze damage in the Lower Valley as some harvested onions and other vegetables that did not have significant damage. Sugarcane harvest continued in the Lower Valley.

**Livestock, Range and Pasture:** Supplemental feeding continued across the state. Precipitation was needed in parts of the Northern Low Plains, Edwards Plateau, South Texas, and the Blacklands to fill lakes and stock tanks for livestock. Cows were calving and ewes were lambing in parts of the Cross Timbers. Spring calving was also reported in the Blacklands, North East Texas, and the Upper Coast. Winter pastures were reportedly doing better in parts of North East Texas. Pasture and range condition was rated mostly poor to fair, though pasture conditions varied greatly across the state.

### Crop Condition

Crop	Percent of Acreage					Index <sup>1</sup>	
	Excellent	Good	Fair	Poor	Very Poor	2021	2020
Wheat	6	21	34	26	13	53	55
Oats	0	6	17	18	59	23	72
Range and Pasture	1	14	29	32	24	40	61

<sup>1</sup> The formula for the condition index is  $I = (5V + 25P + 60F + 90G + 110E)/100$  where I = crop condition index and V, P, F, G, E = percentage of crop rated very poor, poor, fair, good, excellent.

### Crop Progress

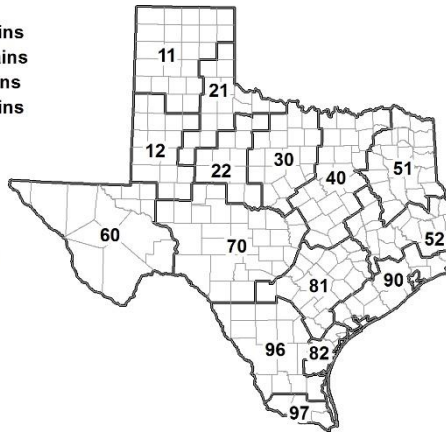
Stage	Percent of Acreage			
	Current Week	Previous Week	Previous Year	5 Year Average
Corn				
Planted	10	3	29	16
Sorghum				
Planted	16	4	26	14
Winter Wheat				
Headed	21	20	25	6
Oats				
Headed	11	10	13	5

### Soil Moisture and Days Suitable by District

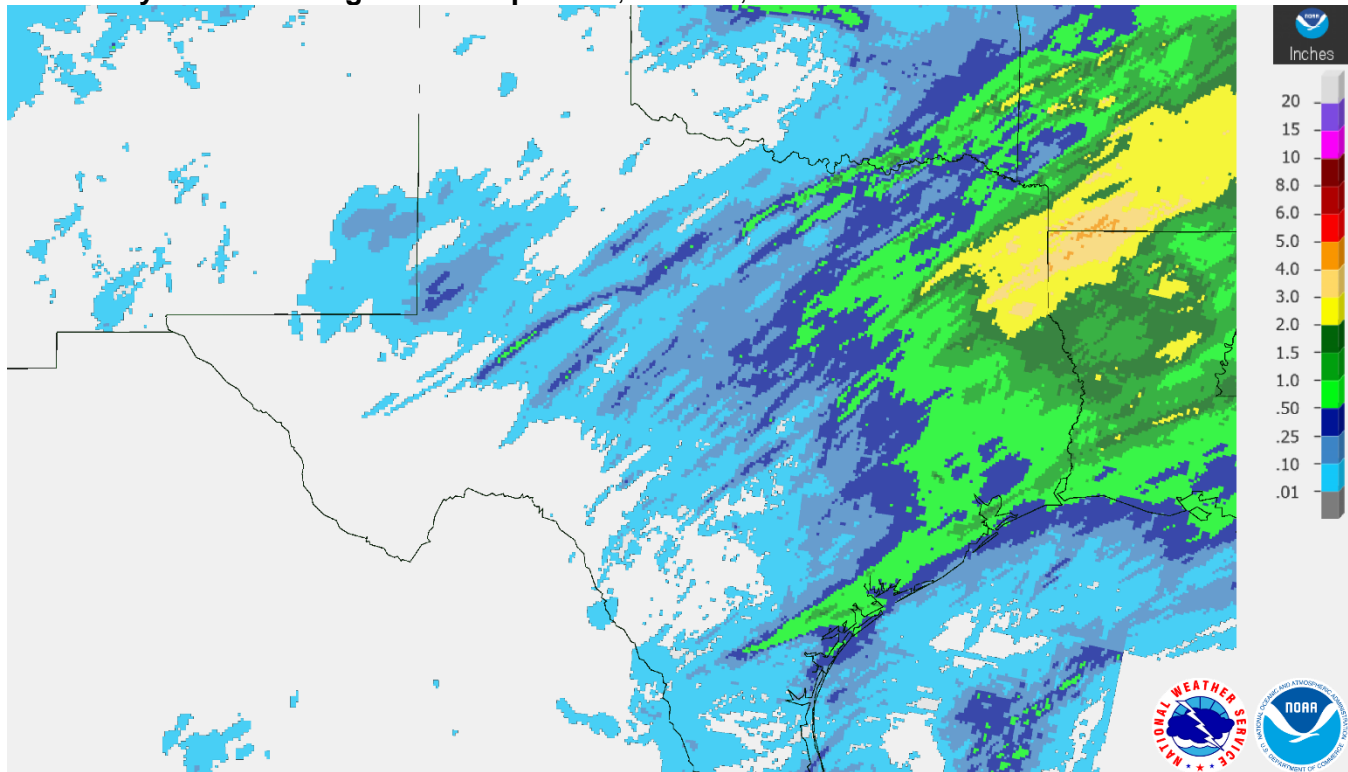
District	Topsoil Moisture Condition by District				Subsoil Moisture Condition by District				Days Suitable for Fieldwork
	Percentage of Acreage				Percentage of Acreage				
	Very Short	Short	Adequate	Surplus	Very Short	Short	Adequate	Surplus	
11	30	51	18	1	43	36	21	0	6.6
12	2	78	20	0	2	81	15	2	7.0
21	0	31	69	0	0	26	74	0	6.5
22	4	47	46	3	0	31	45	24	6.1
30	8	32	59	1	9	30	61	0	6.2
40	0	3	77	20	0	4	82	14	4.3
51	2	8	73	17	2	7	72	19	6.7
52	0	16	74	10	0	14	72	14	6.1
60	9	49	42	0	9	45	46	0	6.2
70	17	45	32	6	15	48	32	5	6.9
81	5	32	60	3	5	30	62	3	5.8
82	13	11	76	0	21	37	42	0	6.2
90	0	4	66	30	0	4	51	45	4.9
96	17	45	38	0	24	44	32	0	6.4
97	66	30	4	0	56	41	3	0	5.4
State	11	40	43	6	13	36	43	8	6.2

### Texas Agricultural Districts

- 11 Northern High Plains
- 12 Southern High Plains
- 21 Northern Low Plains
- 22 Southern Low Plains
- 30 Cross Timbers
- 40 Blacklands
- 51 North East
- 52 South East
- 60 Trans-Pecos
- 70 Edwards Plateau
- 81 South Central
- 82 Coastal Bend
- 90 Upper Coast
- 96 South
- 97 Lower Valley

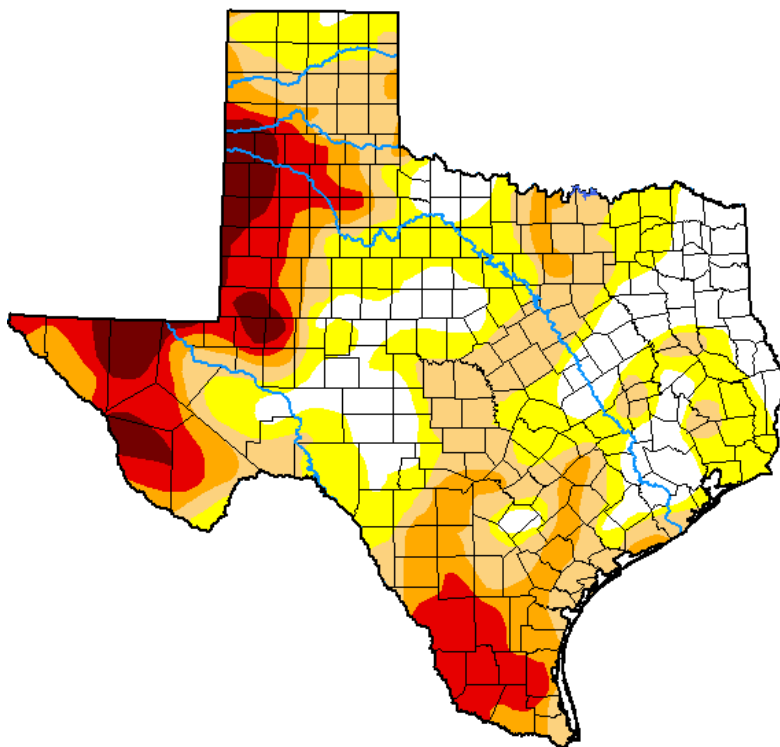


## Seven Day Observed Regional Precipitation, March 7, 2021.



Source: National Weather Service, [www.nws.noaa.gov](http://www.nws.noaa.gov).

## Drought Monitor, Valid March 2, 2021.



*Drought Conditions (Percent Area)*

	None	D0-D4	D1-D4	D2-D4	D3-D4	D4
<b>Current</b>	19.28	80.72	54.03	30.38	17.11	5.01
<b>Last Week</b> <i>02-23-2021</i>	24.20	75.80	50.66	28.18	16.29	4.27
<b>3 Months Ago</b> <i>12-01-2020</i>	4.08	95.92	79.40	43.56	24.47	13.03
<b>Start of Calendar Year</b> <i>12-29-2020</i>	8.80	91.20	81.10	50.33	30.09	13.03
<b>Start of Water Year</b> <i>09-29-2020</i>	57.35	42.65	31.96	20.91	12.02	3.29
<b>One Year Ago</b> <i>03-03-2020</i>	65.58	34.42	21.16	13.93	5.87	0.00

Intensity:

- None
- D0 Abnormally Dry
- D1 Moderate Drought
- D2 Severe Drought
- D3 Extreme Drought
- D4 Exceptional Drought

*The Drought Monitor focuses on broad-scale conditions. Local conditions may vary. For more information on the Drought Monitor, go to <https://droughtmonitor.unl.edu/About.aspx>*

Author:

Brian Fuchs  
National Drought Mitigation Center



Source: National Drought Mitigation Center, a partnership with USDA, U.S. Department of Commerce/NOAA, <http://droughtmonitor.unl.edu>.

## Texas Crop Progress and Condition (8 March 2021)

USDA, National Agricultural Statistics Service, Southern Plains Regional Field Office