



Texas Crop Progress and Condition

Southern Plains Regional Field Office
Post Office Box 70 Austin, Texas 78767
(800) 626-3142 · FAX (855) 270-2725 · www.nass.usda.gov/tx

Issue: TX-CW0521 corrected Weekly Summary for Feb 15-Feb 21 Released: February 23, 2021

Most of the state received from trace amounts to upwards of 1.5 inches of precipitation. Areas of East Texas received up to 2.0 inches. Freezing temperatures with snowfall and ice were reported across the state. There were 4.3 days suitable for fieldwork.

Small Grains: Small grains were reported in various stages and conditions across the state. Winter wheat and oats needed the moisture that came this past week all over the state. Meanwhile, producers started to assess the damage to small grains from the weather.

Row Crops: Ground preparation for cotton continued in some parts of the Trans-Pecos area. Corn planting continued towards the end of the week in the Coastal Bend and the Upper Coast but some crop damage was reported from the extreme temperatures. Corn that was planted in South Texas and the Lower Valley was also affected by the weather.

Fruit, Vegetable and Specialty Crops: Most pecan trees were reported as having little to no limb breakage from last week's weather in the Southern High Plains. Pecan orchards were irrigated in the Trans-Pecos. Meanwhile, fruit and vegetables in North East Texas, the Lower Valley, and the Trans-Pecos were damaged from the weather. Early fruit trees froze in South Central Texas.

Livestock, Range and Pasture: Supplemental feeding increased across the state as producers worked to keep livestock safe during extremely cold temperatures. As a result, supplemental feed and hay was in high demand throughout the state. Some livestock loss was reported throughout the state due to weather. Pasture and range condition was rated mostly poor, though pasture conditions varied greatly across the state.

Crop Progress

Stage	Percent of Acreage			
	Current Week	Previous Week	Previous Year	5 Year Average
Winter Wheat				
Headed	19	18	22	5
Oats				
Headed	9	8	9	2

Crop Condition

Crop	Percent of Acreage					Index ¹	
	Excellent	Good	Fair	Poor	Very Poor	2021	2020
Wheat	7	23	39	19	12	57	59
Oats	1	11	26	26	36	35	58
Range and Pasture	0	8	28	36	28	34	56

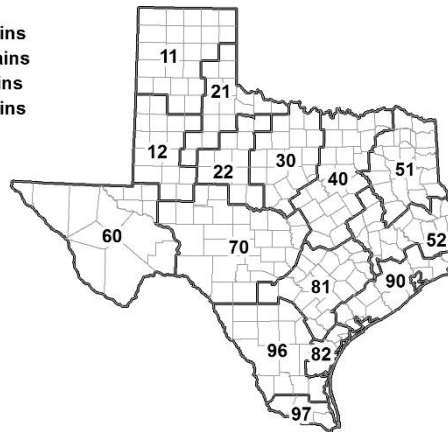
¹ The formula for the condition index is $I = (5V + 25P + 60F + 90G + 110E)/100$ where I = crop condition index and V, P, F, G, E = percentage of crop rated very poor, poor, fair, good, excellent.

Soil Moisture and Days Suitable by District

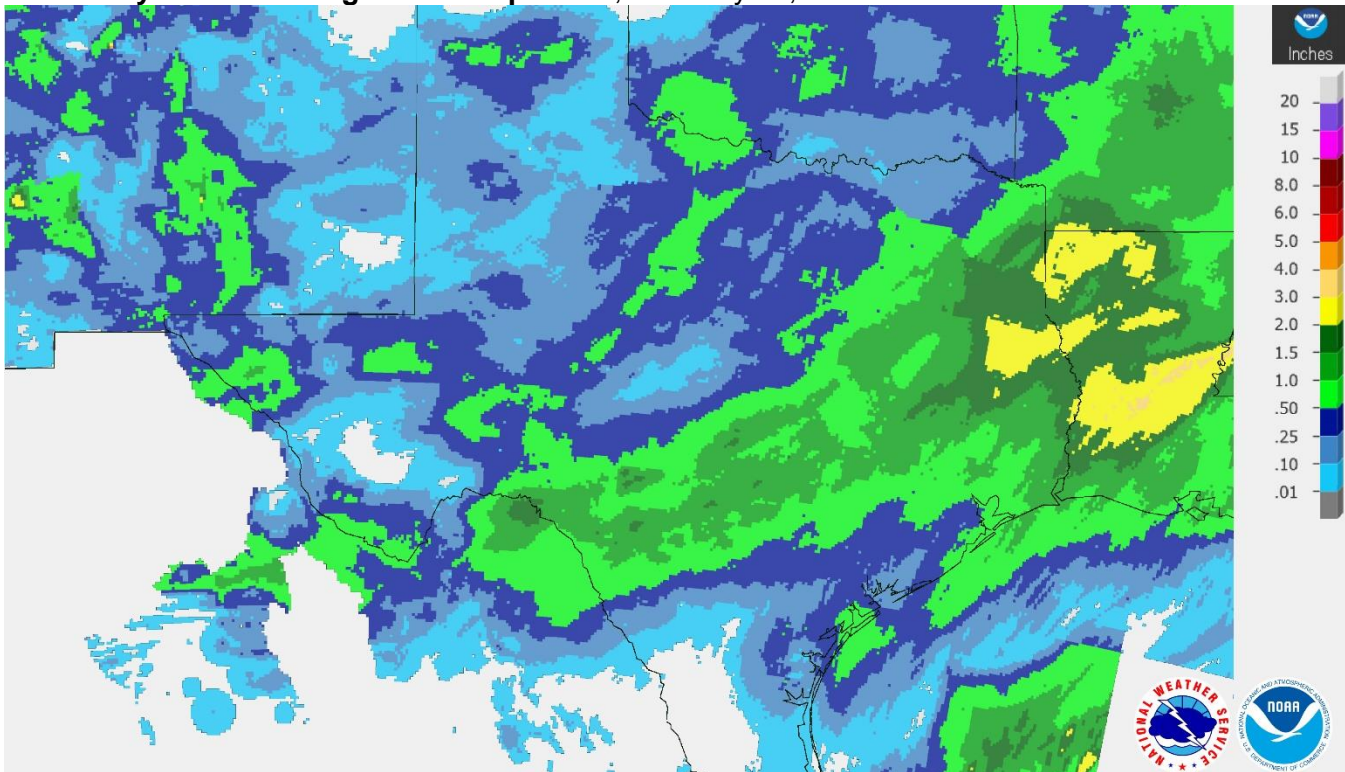
District	Topsoil Moisture Condition by District				Subsoil Moisture Condition by District				Days Suitable for Fieldwork
	Percentage of Acreage				Percentage of Acreage				
	Very Short	Short	Adequate	Surplus	Very Short	Short	Adequate	Surplus	
11	56	40	4	0	53	27	20	0	6.3
12	4	80	14	2	12	59	12	17	5.7
21	4	35	61	0	2	38	59	1	6.9
22	0	19	73	8	0	19	66	15	0.0
30	0	22	76	2	1	28	71	0	1.5
40	1	1	69	29	1	5	71	23	0.9
51	6	18	62	14	0	6	60	34	4.4
52	0	13	84	3	0	16	78	6	6.6
60	5	32	63	0	7	34	59	0	5.9
70	0	29	59	12	1	10	86	3	6.3
81	1	46	51	2	3	45	51	1	6.8
82	11	12	69	8	11	30	56	3	2.7
90	1	3	58	38	0	3	36	61	1.5
96	5	54	41	0	3	52	44	1	2.6
97	61	28	11	0	53	38	9	0	4.9
State	15	35	42	8	15	29	44	12	4.3

Texas Agricultural Districts

- 11 Northern High Plains
- 12 Southern High Plains
- 21 Northern Low Plains
- 22 Southern Low Plains
- 30 Cross Timbers
- 40 Blacklands
- 51 North East
- 52 South East
- 60 Trans-Pecos
- 70 Edwards Plateau
- 81 South Central
- 82 Coastal Bend
- 90 Upper Coast
- 96 South
- 97 Lower Valley

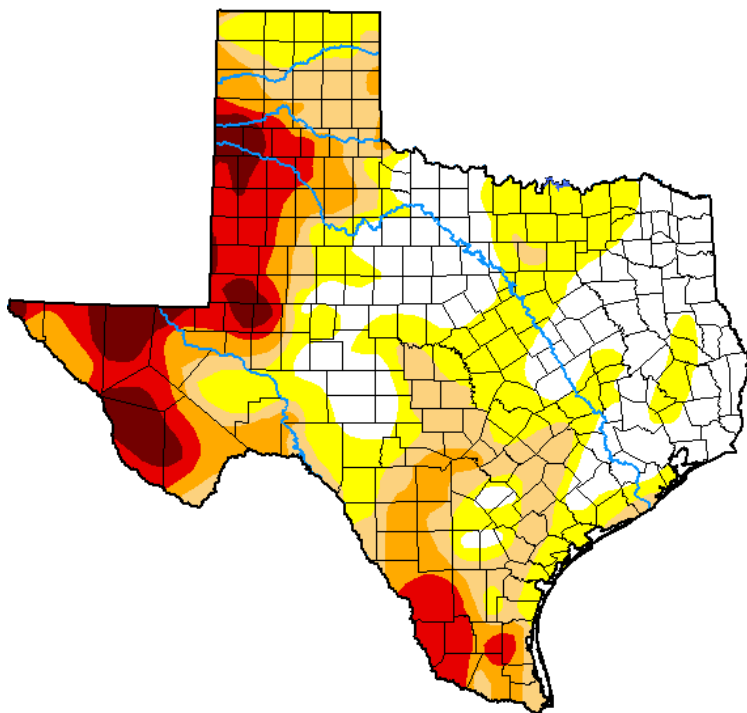


Seven Day Observed Regional Precipitation, February 21, 2021.



Source: National Weather Service, www.nws.noaa.gov.

Drought Monitor, Valid February 16, 2021.



Drought Conditions (Percent Area)

	None	D0-D4	D1-D4	D2-D4	D3-D4	D4
Current	27.25	72.75	44.90	28.13	15.89	5.22
Last Week <i>02-09-2021</i>	25.72	74.28	46.98	30.24	18.16	5.56
3 Months Ago <i>11-17-2020</i>	2.81	97.19	75.44	39.79	20.50	9.10
Start of Calendar Year <i>12-29-2020</i>	8.80	91.20	81.10	50.33	30.09	13.03
Start of Water Year <i>09-29-2020</i>	57.35	42.65	31.96	20.91	12.02	3.29
One Year Ago <i>02-18-2020</i>	59.37	40.63	23.84	12.73	2.66	0.00

Intensity:

- None
- D0 Abnormally Dry
- D1 Moderate Drought
- D2 Severe Drought
- D3 Extreme Drought
- D4 Exceptional Drought

The Drought Monitor focuses on broad-scale conditions. Local conditions may vary. For more information on the Drought Monitor, go to <https://droughtmonitor.unl.edu/About.aspx>

Author:

David Miskus
NOAA/NWS/NCEP/CPC



Source: National Drought Mitigation Center, a partnership with USDA, U.S. Department of Commerce/NOAA, <http://droughtmonitor.unl.edu>.