



## Texas Crop Progress and Condition

Southern Plains Regional Field Office  
Post Office Box 70 Austin, Texas 78767  
(800) 626-3142 · FAX (855) 270-2725 · [www.nass.usda.gov/tx](http://www.nass.usda.gov/tx)

**Issue: TX-CW0420**

**Weekly Summary for February 10-16**

**Released: February 18, 2020**

Most of the state received from trace amounts to upwards of 6.0 inches of precipitation. Several areas of the Blacklands and North East Texas received in excess of 6.0 inches. There were 4.5 days suitable for fieldwork.

**Small Grains:** Winter wheat in the High and Low Plains continued to develop but more rain was still needed in several areas. Meanwhile, producers with adequate moisture in the Northern High Plains began applying fertilizer. Development was slowed in areas of the Southern Low Plains with some areas reporting widespread freeze damage from the previous week's cold temperatures. Oat seedings were completed but army worms damaged several wheat fields in the Blacklands. The Edwards Plateau reported small grains progress lagged normal development. Producers were hopeful that favorable weather forecasts would facilitate progress. South Texas small grain crops continued to progress.

**Row Crops:** Corn silage producers in the Cross Timbers experienced cold and wet conditions which has delayed plantings for at least a week or two. The Edwards Plateau needed more rain before cotton planting could continue. Corn planting continued in the Coastal Bend and the Upper Coast where moisture was sufficient, while planting stalled in areas too wet for field work. Producers in the Lower Valley pre-irrigated fields in preparation for cotton and sesame planting.

**Fruit, Vegetable and Specialty Crops:** Pecan harvest in the Trans-Pecos was delayed due to previous snowfall. Spinach harvest continued while potato planting has been completed in South Texas.

**Livestock, Range and Pasture:** Livestock were rated in fair to good condition. Meanwhile, beef producers in the Southern High Plains reported the fall calf crop in good to very good condition. Supplemental feeding continued across the state. Pasture and range condition was rated mostly fair to good, though pasture conditions varied greatly across the state. The Blacklands received adequate rainfall and their stock tanks were reported full. North East Texas reported feral hog damage in several areas.

### Crop Progress

Stage	Percent of Acreage			
	Current Week	Previous Week	Previous Year	5 Year Average
Winter Wheat Headed	7	*5	1	(NA)
Oats Headed	8	7	1	(NA)

(NA) Not available.

\* Previous week has been revised.

### Crop Condition

Crop	Percent of Acreage					Index <sup>1</sup>	
	Excellent	Good	Fair	Poor	Very Poor	2020	2019
Wheat	5	30	41	20	4	62	58
Oats	4	26	42	19	9	58	61
Range and Pasture	3	24	38	24	11	54	60

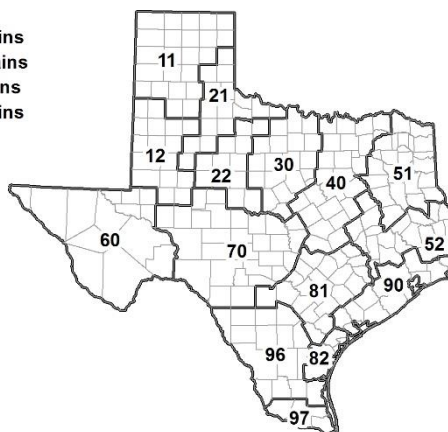
<sup>1</sup> The formula for the condition index is  $I = (5V + 25P + 60F + 90G + 110E)/100$  where I = crop condition index and V, P, F, G, E = percentage of crop rated very poor, poor, fair, good, excellent.

### Soil Moisture and Days Suitable by District

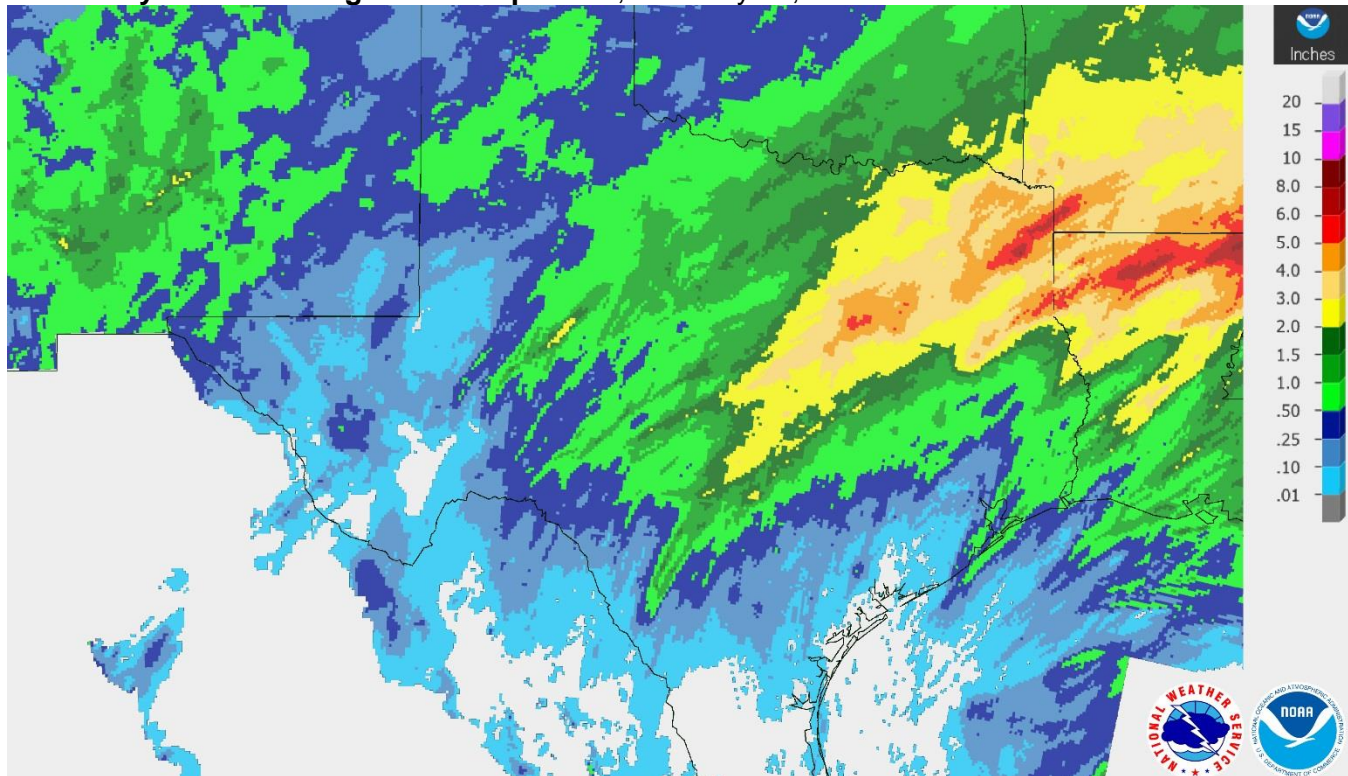
District	Topsoil Moisture Condition by District				Subsoil Moisture Condition by District				Days Suitable for Fieldwork
	Percentage of Acreage				Percentage of Acreage				
	Very Short	Short	Adequate	Surplus	Very Short	Short	Adequate	Surplus	
11	1	40	59	0	1	31	68	0	5.8
12	18	39	33	10	20	44	30	6	4.0
21	2	17	77	4	6	24	69	1	4.3
22	0	11	74	15	0	11	81	8	4.3
30	1	8	80	11	2	24	63	11	3.5
40	0	3	47	50	0	3	49	48	3.7
51	0	1	36	63	0	1	46	53	2.9
52	0	23	50	27	0	25	52	23	4.9
60	15	35	40	10	15	30	45	10	0.0
70	5	50	43	2	6	54	39	1	5.3
81	8	42	42	8	14	42	44	0	5.6
82	22	24	54	0	11	23	66	0	5.4
90	4	12	70	14	2	43	28	27	2.2
96	48	48	4	0	49	48	3	0	6.2
97	38	48	14	0	18	48	34	0	7.0
State	7	27	51	15	8	29	50	13	4.5

### Texas Agricultural Districts

- 11 Northern High Plains
- 12 Southern High Plains
- 21 Northern Low Plains
- 22 Southern Low Plains
- 30 Cross Timbers
- 40 Blacklands
- 51 North East
- 52 South East
- 60 Trans-Pecos
- 70 Edwards Plateau
- 81 South Central
- 82 Coastal Bend
- 90 Upper Coast
- 96 South
- 97 Lower Valley

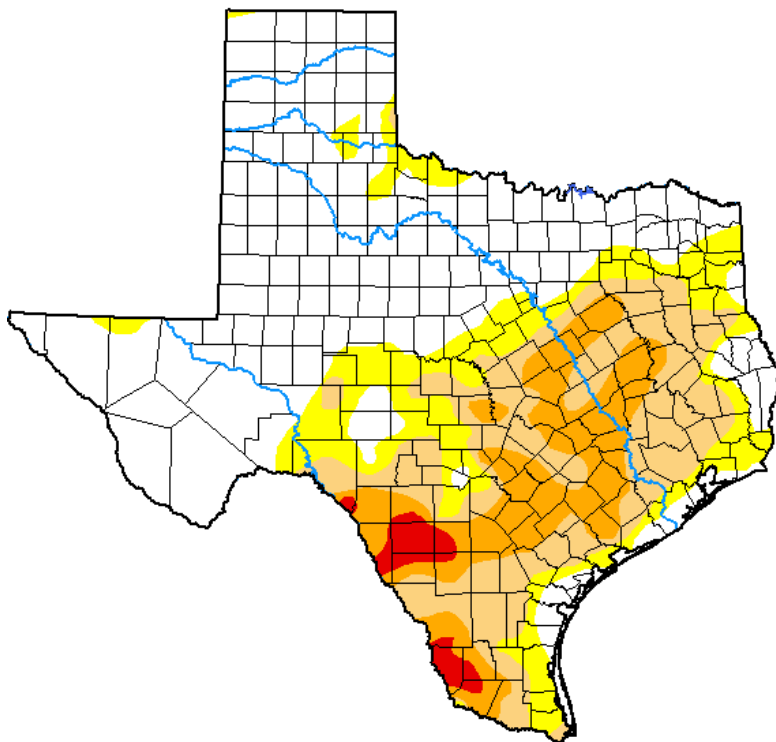


## Seven Day Observed Regional Precipitation, February 17, 2020.



Source: National Weather Service, [www.nws.noaa.gov](http://www.nws.noaa.gov).

## Drought Monitor, Valid February 11, 2020.



*Drought Conditions (Percent Area)*

	None	D0-D4	D1-D4	D2-D4	D3-D4	D4
<b>Current</b>	52.03	47.97	32.68	13.95	1.87	0.00
<b>Last Week</b> <i>02-04-2020</i>	46.59	53.41	33.07	12.66	0.81	0.00
<b>3 Months Ago</b> <i>11-12-2019</i>	46.76	53.24	31.97	11.04	0.56	0.00
<b>Start of Calendar Year</b> <i>12-31-2019</i>	44.69	55.31	36.12	9.19	0.74	0.00
<b>Start of Water Year</b> <i>10-01-2019</i>	31.74	68.26	46.05	22.33	6.32	0.00
<b>One Year Ago</b> <i>02-12-2019</i>	64.76	35.24	3.06	0.00	0.00	0.00

**Intensity:**

- None
- D0 Abnormally Dry
- D1 Moderate Drought
- D2 Severe Drought
- D3 Extreme Drought
- D4 Exceptional Drought

The Drought Monitor focuses on broad-scale conditions. Local conditions may vary. For more information on the Drought Monitor, go to <https://droughtmonitor.unl.edu/About.aspx>

**Author:**

Richard Tinker  
CPC/NOAA/NWS/NCEP



Source: National Drought Mitigation Center, a partnership with USDA, U.S. Department of Commerce/NOAA, <http://droughtmonitor.unl.edu>.