



## Texas Crop Progress and Condition

Southern Plains Regional Field Office  
Post Office Box 70 Austin, Texas 78767  
(800) 626-3142 · FAX (855) 270-2725 · www.nass.usda.gov/tx

**Issue: TX-CW4519**

**Weekly Summary for December 2-8**

**Released: December 9, 2019**

Weather was mostly dry across Texas last week, while average temperatures were slightly warmer than the week prior. Precipitation in the Northern High Plains ranged from trace amounts to a quarter of an inch, while the rest state received little to no precipitation. There were 6.3 days suitable for fieldwork.

**Small Grains:** Small grains were in need of moisture in the Northern High Plains, the Cross Timbers, the Blacklands, the Edwards Plateau and South Texas. The lack of moisture has affected emergence and growth. Some producers in the Plains continued seeding winter wheat, while others decided to wait for an increase in top soil moisture. Insect pressure was increasing in some Cross Timbers small grains.

**Row Crops:** Cotton harvest was winding down in the Plains, the Trans-Pecos and the Edwards Plateau, but it was delayed in areas of the Blacklands due to wet conditions. Peanut harvest continued in South Texas.

**Fruit, Vegetable and Specialty Crops:** Spinach and cabbage harvest continued in South Texas. Development of fall vegetable crops continued to progress in South Texas and the Lower Valley. Pecan harvest continued in the Southern High Plains, the Cross Timbers, the Trans-Pecos, the Edwards Plateau, South Central Texas and South Texas.

**Livestock, Range and Pasture:** Livestock condition remained mostly fair to good across the state. The lack of moisture throughout the state forced producers to continue supplemental feeding. Range and pasture condition remained mostly fair to poor.

**Crop Condition**

Crop	Percent of Acreage					Index <sup>1</sup>	
	Excellent	Good	Fair	Poor	Very Poor	2019	2018
Cotton	3	20	45	24	8	55	(NA)
Peanuts	0	47	52	1	0	74	(NA)
Soybeans	1	30	48	16	5	61	(NA)
Wheat	7	16	47	18	12	55	(NA)
Oats	1	28	46	20	5	59	(NA)
Range and Pasture	2	15	38	29	16	47	(NA)

<sup>1</sup> The formula for the condition index is  $I = (5V + 25P + 60F + 90G + 110E)/100$  where I = crop condition index and V, P, F, G, E = percentage of crop rated very poor, poor, fair, good, excellent.

(NA) Not available.

### Crop Progress

Stage	Percent of Acreage			
	Current Week	Previous Week	Previous Year	5 Year Average
Cotton				
Harvested	82	74	(NA)	(NA)
Peanuts				
Harvested	95	94	(NA)	(NA)
Soybeans				
Harvested	95	93	(NA)	(NA)
Sunflowers				
Harvested	96	94	(NA)	(NA)
Winter Wheat				
Planted	93	91	90	91
Emerged	83	79	80	81

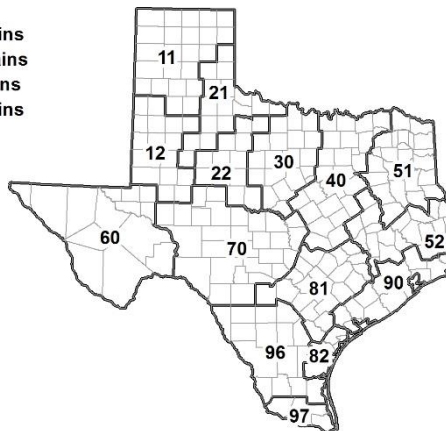
(NA) Not available.

### Soil Moisture and Days Suitable by District

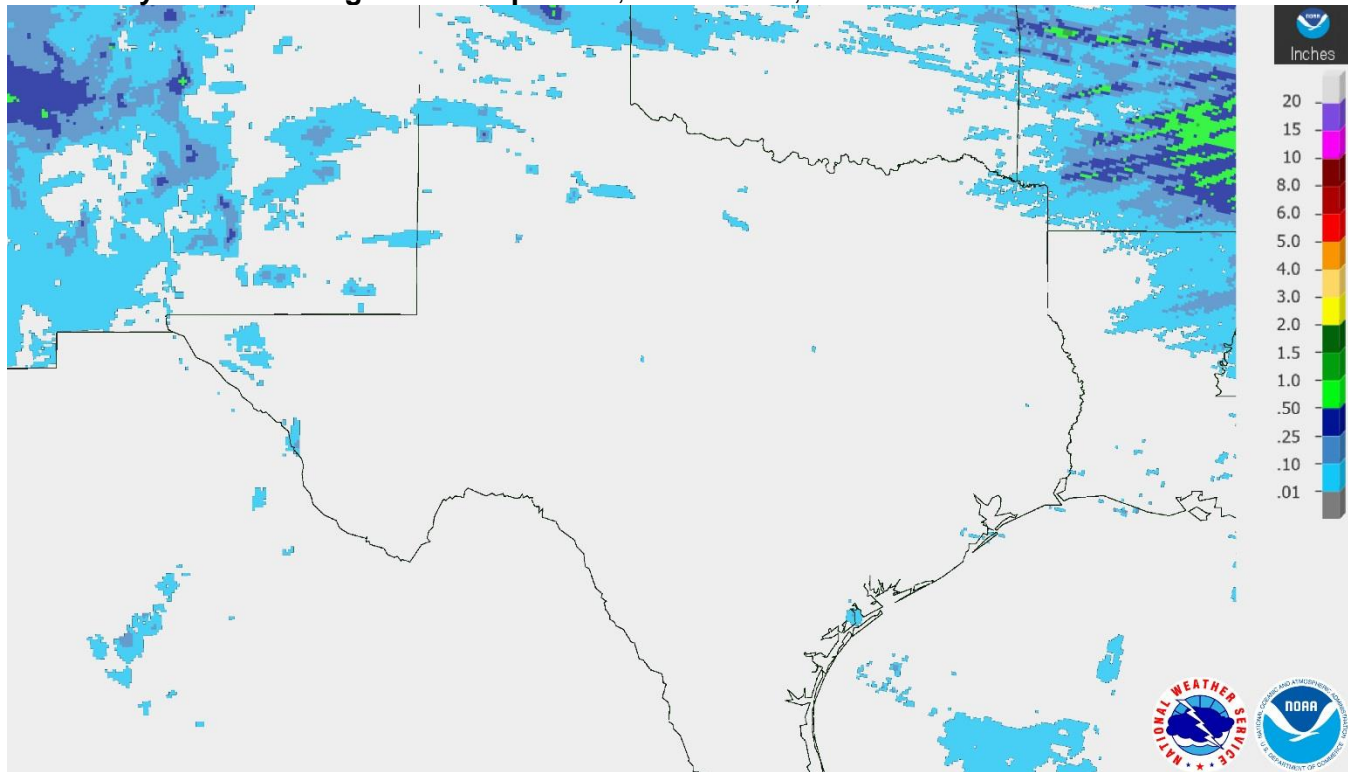
District	Topsoil Moisture Condition by District				Subsoil Moisture Condition by District				Days Suitable for Fieldwork
	Percentage of Acreage				Percentage of Acreage				
	Very Short	Short	Adequate	Surplus	Very Short	Short	Adequate	Surplus	
11	13	48	39	0	6	47	47	0	6.7
12	12	60	28	0	9	69	20	2	6.0
21	8	45	46	1	20	50	30	0	6.5
22	24	28	48	0	23	37	40	0	6.4
30	8	43	49	0	10	39	51	0	6.2
40	15	31	45	9	11	32	49	8	6.0
51	6	30	62	2	7	32	58	3	7.0
52	1	23	76	0	2	19	78	1	7.0
60	18	18	56	8	19	18	55	8	5.9
70	52	33	15	0	52	31	17	0	6.7
81	3	58	39	0	12	48	40	0	6.3
82	18	27	53	2	17	42	39	2	7.0
90	4	23	63	10	4	19	65	12	5.2
96	26	55	19	0	16	67	16	1	6.7
97	17	57	24	2	8	35	55	2	7.0
State	14	43	41	2	12	45	41	2	6.3

### Texas Agricultural Districts

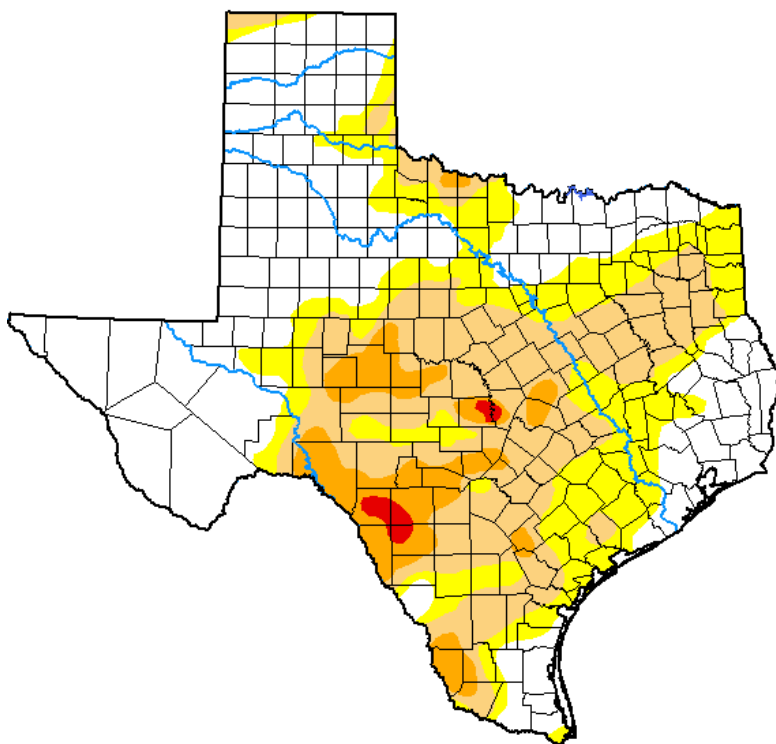
- 11 Northern High Plains
- 12 Southern High Plains
- 21 Northern Low Plains
- 22 Southern Low Plains
- 30 Cross Timbers
- 40 Blacklands
- 51 North East
- 52 South East
- 60 Trans-Pecos
- 70 Edwards Plateau
- 81 South Central
- 82 Coastal Bend
- 90 Upper Coast
- 96 South
- 97 Lower Valley



## Seven Day Observed Regional Precipitation, December 8, 2019.



## Drought Monitor, Valid December 3, 2019.



Drought Conditions (Percent Area)

	None	D0-D4	D1-D4	D2-D4	D3-D4	D4
<b>Current</b>	44.14	55.86	33.54	8.42	0.67	0.00
<b>Last Week</b> 11-26-2019	45.51	54.49	32.37	9.98	0.53	0.00
<b>3 Months Ago</b> 09-03-2019	33.59	66.41	42.90	10.26	1.73	0.00
<b>Start of Calendar Year</b> 01-01-2019	92.99	7.01	1.32	0.00	0.00	0.00
<b>Start of Water Year</b> 10-01-2019	31.74	68.26	46.05	22.33	6.32	0.00
<b>One Year Ago</b> 12-04-2018	96.13	3.87	0.80	0.00	0.00	0.00

Intensity:

- None
- D0 Abnormally Dry
- D1 Moderate Drought
- D2 Severe Drought
- D3 Extreme Drought
- D4 Exceptional Drought

The Drought Monitor focuses on broad-scale conditions. Local conditions may vary. For more information on the Drought Monitor, go to <https://droughtmonitor.unl.edu/About.aspx>

Author:

Deborah Bathke  
National Drought Mitigation Center



Source: National Drought Mitigation Center, a partnership with USDA, U.S. Department of Commerce/NOAA, <http://droughtmonitor.unl.edu>.