



Texas Crop Progress and Condition

Southern Plains Regional Field Office
Post Office Box 70 Austin, Texas 78767
(800) 626-3142 · FAX (855) 270-2725 · www.nass.usda.gov/tx

Issue: TX-CW4419

Weekly Summary for November 25-December 1

Released: December 2, 2019

Weather was mostly dry and cool throughout Texas last week. Precipitation in areas of the Northern High Plains, the Low Plains, the Cross Timbers, the Blacklands and North East Texas ranged between 0.2 of an inch and 1 inch of rain, with isolated areas in the Blacklands getting upwards of 2 inches. The rest of the state received little to no precipitation. There were 5.8 days suitable for fieldwork.

Small Grains: Wheat seeding was ongoing in areas of the Plains and the Cross Timbers. Wheat conditions were improving in areas of the Low Plains with the recent rains. However, dryland small grains were struggling due to lack of moisture in many parts of the state. Small grains seedings were mostly completed everywhere in the state, with the exception of the Plains.

Row Crops: Cotton harvest was active in the Plains where the weather allowed. Precipitation slowed harvest in areas of the Northern High Plains, the Low Plains and the Trans-Pecos. Meanwhile, harvest was nearing completion in the Edwards Plateau. Peanut harvest continued in South Texas. Ratoon rice crop harvest was almost completed in the Upper Coast.

Fruit, Vegetable and Specialty Crops: Spinach harvest continued in South Texas. Development of fall vegetable crops continued to make good progress in South Texas and the Lower Valley. Pecan harvest continued in the Edwards Plateau and South Central Texas. Rainfall delayed pecan harvest in the Trans-Pecos.

Livestock, Range and Pasture: Livestock condition was mostly fair to good across the state. Producers continued providing supplemental feed in many areas of the state. Range and pasture condition remained mostly fair to poor.

Crop Progress

Stage	Percent of Acreage			
	Current Week	Previous Week	Previous Year	5 Year Average
Cotton				
Harvested	74	68	60	65
Peanuts				
Mature	100	85	85	86
Harvested	94	79	80	92
Soybeans				
Harvested	93	90	93	92
Sunflowers				
Harvested	94	90	89	91
Winter Wheat				
Planted	91	87	90	91
Emerged	79	75	80	81
Oats				
Emerged	95	90	77	76

Crop Condition

Crop	Percent of Acreage					Index ¹	
	Excellent	Good	Fair	Poor	Very Poor	2019	2018
Cotton	3	20	45	24	8	55	(NA)
Peanuts	0	47	52	1	0	74	(NA)
Soybeans	1	30	48	16	5	61	(NA)
Wheat	7	22	42	19	10	58	(NA)
Oats	2	35	44	14	5	64	(NA)
Range and Pasture	1	14	40	31	14	--	(NA)

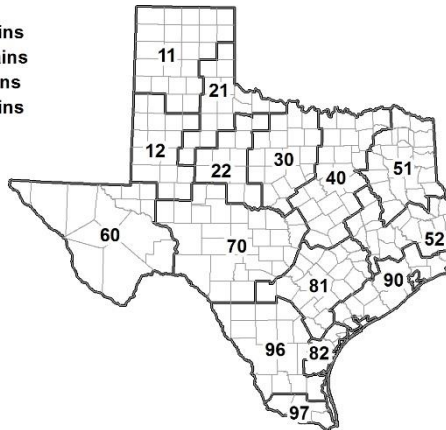
¹ The formula for the condition index is $I = (5V + 25P + 60F + 90G + 110E)/100$ where I = crop condition index and V, P, F, G, E = percentage of crop rated very poor, poor, fair, good, excellent.
 (NA) Not available.

Soil Moisture and Days Suitable by District

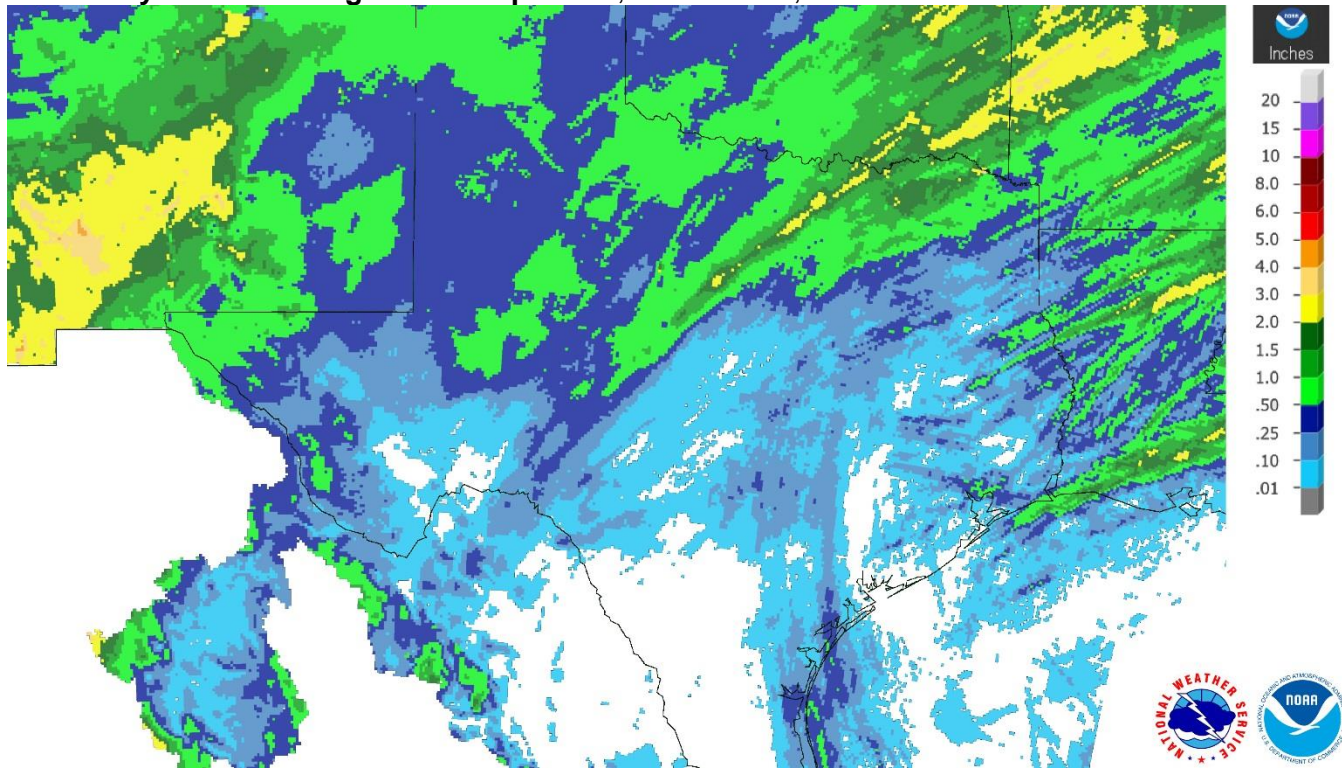
District	Topsoil Moisture Condition by District				Subsoil Moisture Condition by District				Days Suitable for Fieldwork
	Percentage of Acreage				Percentage of Acreage				
	Very Short	Short	Adequate	Surplus	Very Short	Short	Adequate	Surplus	
11	7	38	54	1	3	30	66	1	6.9
12	5	71	24	0	5	79	16	0	6.1
21	10	43	46	1	26	49	25	0	4.4
22	2	25	71	2	7	37	54	2	4.2
30	7	36	55	2	10	34	55	1	5.3
40	14	19	61	6	7	21	65	7	4.9
51	3	29	65	3	6	28	62	4	6.7
52	2	17	70	11	2	15	75	8	6.9
60	18	19	63	0	19	17	64	0	4.9
70	18	67	15	0	28	54	18	0	6.2
81	3	54	43	0	15	43	42	0	5.7
82	21	29	50	0	18	49	33	0	6.2
90	2	23	67	8	2	27	61	10	5.2
96	8	52	40	0	6	70	23	1	6.6
97	14	55	27	4	7	33	58	2	5.4
State	8	42	48	2	8	42	48	2	5.8

Texas Agricultural Districts

- 11 Northern High Plains
- 12 Southern High Plains
- 21 Northern Low Plains
- 22 Southern Low Plains
- 30 Cross Timbers
- 40 Blacklands
- 51 North East
- 52 South East
- 60 Trans-Pecos
- 70 Edwards Plateau
- 81 South Central
- 82 Coastal Bend
- 90 Upper Coast
- 96 South
- 97 Lower Valley

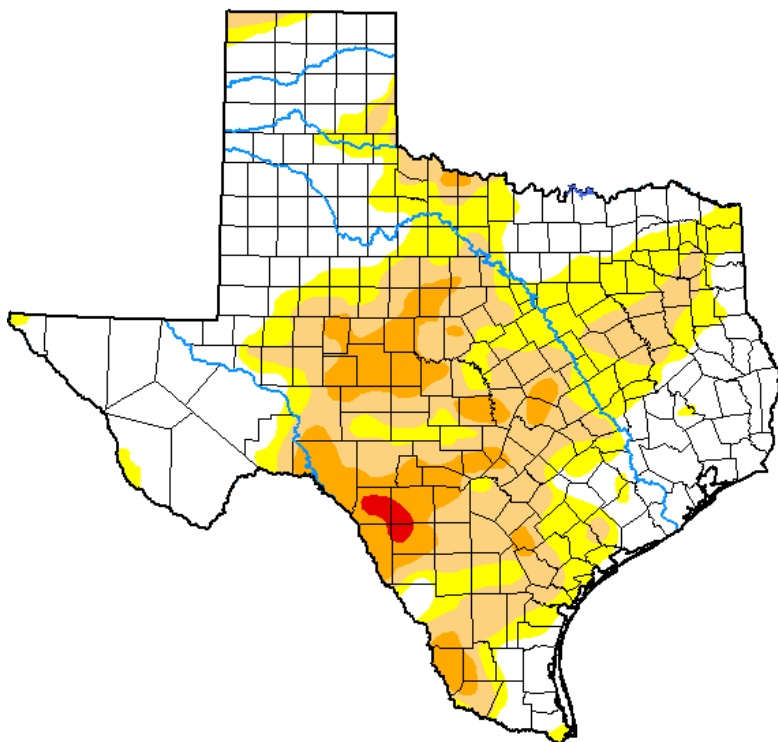


Seven Day Observed Regional Precipitation, December 1, 2019.



Source: National Weather Service, www.nws.noaa.gov.

Drought Monitor, Valid November 26, 2019.



Drought Conditions (Percent Area)

	None	D0-D4	D1-D4	D2-D4	D3-D4	D4
Current	45.51	54.49	32.37	9.98	0.53	0.00
Last Week <i>11-19-2019</i>	47.81	52.19	31.96	10.46	0.53	0.00
3 Months Ago <i>08-27-2019</i>	25.90	74.10	37.58	8.75	1.21	0.00
Start of Calendar Year <i>01-01-2019</i>	92.99	7.01	1.32	0.00	0.00	0.00
Start of Water Year <i>10-01-2019</i>	31.74	68.26	46.05	22.33	6.32	0.00
One Year Ago <i>11-27-2018</i>	97.73	2.27	0.80	0.00	0.00	0.00

Intensity:

- None
- D0 Abnormally Dry
- D1 Moderate Drought
- D2 Severe Drought
- D3 Extreme Drought
- D4 Exceptional Drought

The Drought Monitor focuses on broad-scale conditions. Local conditions may vary. For more information on the Drought Monitor, go to <https://droughtmonitor.unl.edu/About.aspx>

Author:

Brad Rippey
U.S. Department of Agriculture



Source: National Drought Mitigation Center, a partnership with USDA, U.S. Department of Commerce/NOAA, <http://droughtmonitor.unl.edu>.

Texas Crop Progress and Condition (2 December 2019)

USDA, National Agricultural Statistics Service, Southern Plains Regional Field Office