



# Texas Crop Progress and Condition

Southern Plains Regional Field Office  
Post Office Box 70 Austin, Texas 78767  
(800) 626-3142 · FAX (855) 270-2725 · [www.nass.usda.gov/tx](http://www.nass.usda.gov/tx)

**Issue: TX-CW3419**

**Weekly Summary for September 16- 22**

**Released: September 23, 2019**

Texas weather varied greatly last week. Precipitation in the Plains, the Trans-Pecos and East Texas ranged from trace amounts up to 5 inches, while the Edwards Plateau, South Central Texas, South Texas and the Lower Valley received little to no precipitation. The Upper Coast received upwards of 20 inches of rain due to tropical depression Imelda. There were 5.8 days suitable for fieldwork.

**Small Grains:** Small grain seeding continued in parts of the Plains and the Cross Timbers. Producers were preparing fields for small grain seeding in areas of East Texas, the Edwards Plateau and South Central Texas.

**Row Crops:** Cotton harvest was active in the Blacklands, the Edwards Plateau, the Upper Coast and South Texas. Sorghum continued to mature in the Northern High Plains. Some late planted rice remained unharvested in the Upper Coast. Peanuts continued to mature in South Texas. Producers along the Upper Coast were waiting for flood waters to subside to determine Imelda's effect on crops.

**Fruit, Vegetable and Specialty Crops:** Early planted cabbage was emerging in South Texas. However, most vegetable producers continued preparing fields for planting. Pecans condition remained mostly unchanged.

**Livestock, Range and Pasture:** Livestock condition remained rated mostly fair to good across the state thanks to the continued use of supplemental feed. Range and pasture condition remained mostly fair to poor across the state.

### Crop Progress

Stage	Percent of Acreage			
	Current Week	Previous Week	Previous Year	5 Year Average
<b>Corn</b>				
Mature	77	67	81	77
Harvested	65	59	67	65
<b>Cotton</b>				
Bolls Opening	56	47	44	45
Harvested	16	15	23	17
<b>Peanuts</b>				
Mature	19	14	22	19
<b>Rice</b>				
Harvested	94	92	97	97
<b>Sorghum</b>				
Mature	89	87	82	80
Harvested	83	79	73	67
<b>Soybeans</b>				
Setting Pods	99	92	99	100
Dropping Leaves	72	65	78	73
Harvested	50	45	51	46
<b>Sunflowers</b>				
Harvested	66	62	66	58
<b>Winter Wheat</b>				
Planted	23	4	28	24

### Crop Condition

Crop	Percent of Acreage					Index <sup>1</sup>	
	Excellent	Good	Fair	Poor	Very Poor	2019	2018
Corn	11	41	38	9	1	74	54
Cotton	4	24	47	22	3	60	50
Peanuts	0	62	35	3	0	78	76
Rice	11	54	30	4	1	80	75
Sorghum	25	40	29	5	1	82	52
Soybeans	1	30	48	16	5	61	64
Range and Pasture	1	18	34	32	15	--	--

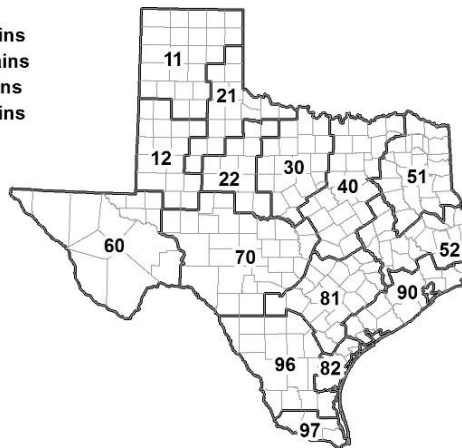
<sup>1</sup> The formula for the condition index is  $I = (5V + 25P + 60F + 90G + 110E)/100$  where I = crop condition index and V, P, F, G, E = percentage of crop rated very poor, poor, fair, good, excellent.

### Soil Moisture and Days Suitable by District

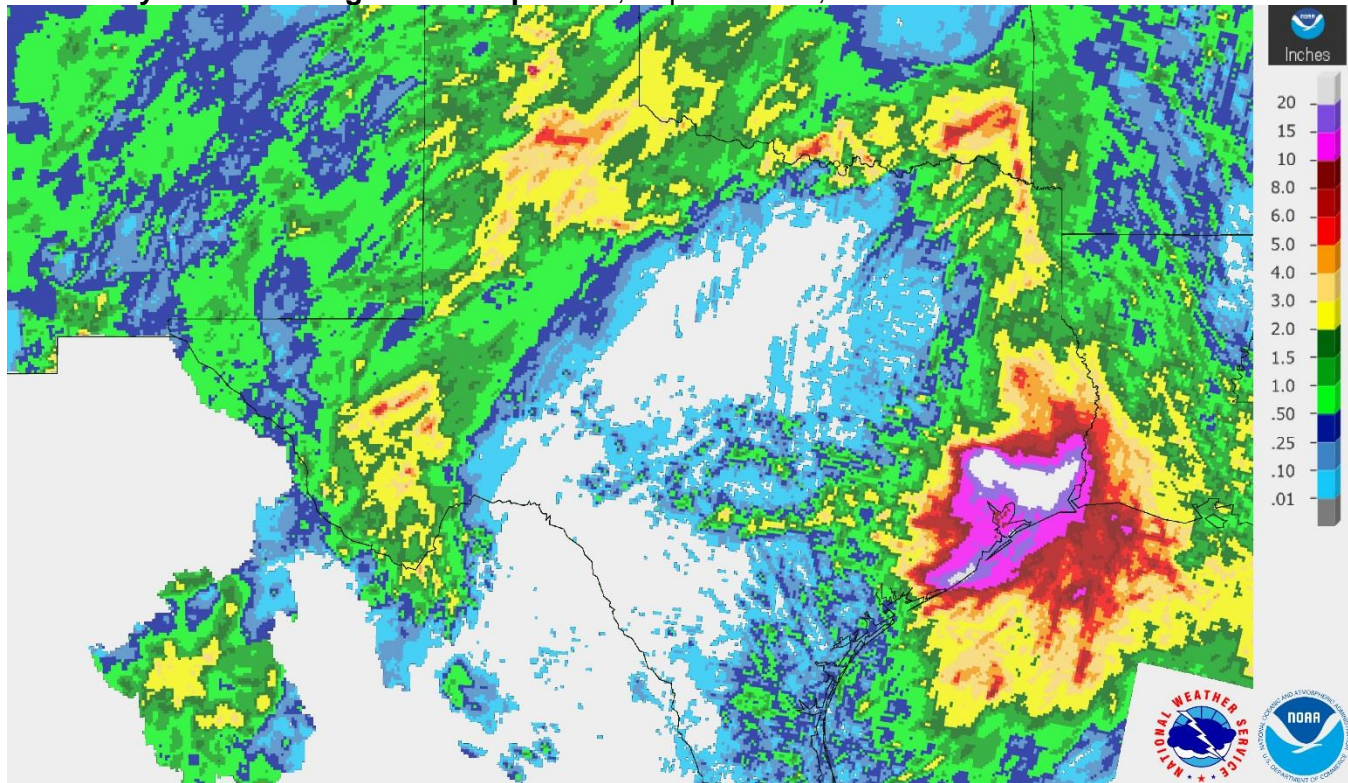
District	Topsoil Moisture Condition by District				Subsoil Moisture Condition by District				Days Suitable for Fieldwork
	Percentage of Acreage				Percentage of Acreage				
	Very Short	Short	Adequate	Surplus	Very Short	Short	Adequate	Surplus	
11	20	31	43	6	18	38	41	3	5.0
12	6	60	22	12	6	62	28	4	6.0
21	35	44	21	0	33	48	19	0	6.0
22	34	39	22	5	33	47	17	3	6.0
30	22	43	35	0	12	51	37	0	6.3
40	33	47	20	0	37	45	18	0	6.4
51	14	55	31	0	18	48	30	4	6.4
52	11	45	20	24	11	46	21	22	6.1
60	34	12	54	0	40	6	54	0	6.1
70	54	35	11	0	37	49	14	0	7.0
81	29	45	26	0	29	59	12	0	6.4
82	22	41	36	1	34	42	23	1	6.5
90	15	40	15	30	15	50	9	26	2.8
96	41	39	20	0	43	37	20	0	6.7
97	13	37	43	7	9	33	51	7	7.0
State	23	43	28	6	22	47	27	4	5.8

### Texas Agricultural Districts

- 11 Northern High Plains
- 12 Southern High Plains
- 21 Northern Low Plains
- 22 Southern Low Plains
- 30 Cross Timbers
- 40 Blacklands
- 51 North East
- 52 South East
- 60 Trans-Pecos
- 70 Edwards Plateau
- 81 South Central
- 82 Coastal Bend
- 90 Upper Coast
- 96 South
- 97 Lower Valley

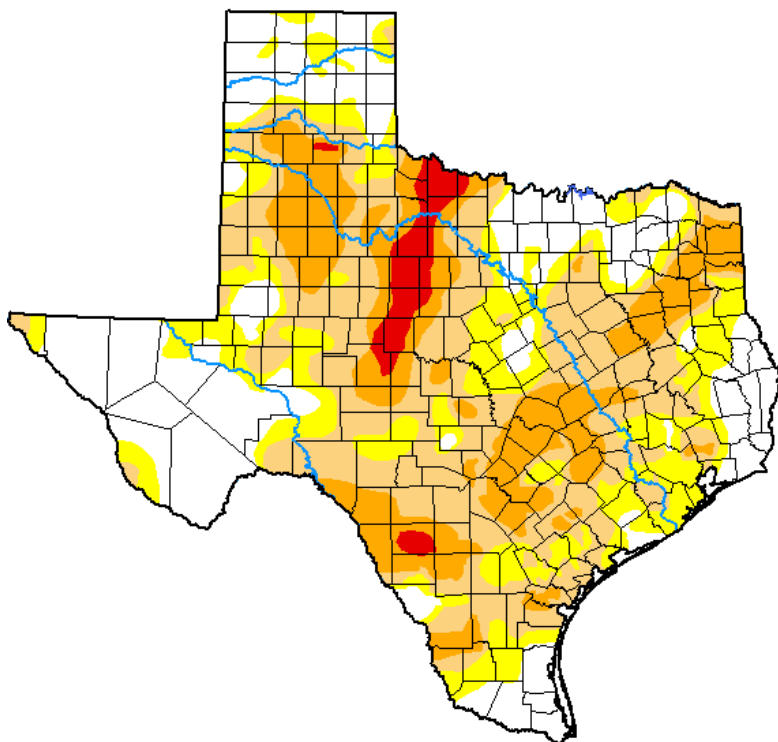


## Seven Day Observed Regional Precipitation, September 22, 2019.



Source: National Weather Service, [www.nws.noaa.gov](http://www.nws.noaa.gov).

## Drought Monitor, Valid September 17, 2019.



*Drought Conditions (Percent Area)*

	None	D0-D4	D1-D4	D2-D4	D3-D4	D4
<b>Current</b>	27.74	72.26	51.75	21.20	3.07	0.00
<b>Last Week</b> 09-10-2019	28.16	71.84	53.42	17.43	2.76	0.00
<b>3 Months Ago</b> 06-18-2019	94.17	5.83	1.59	0.00	0.00	0.00
<b>Start of Calendar Year</b> 01-01-2019	92.99	7.01	1.32	0.00	0.00	0.00
<b>Start of Water Year</b> 09-25-2018	57.46	42.54	20.19	7.03	0.96	0.00
<b>One Year Ago</b> 09-18-2018	39.87	60.13	28.85	9.26	2.43	0.10

Intensity:

- None
- D0 Abnormally Dry
- D1 Moderate Drought
- D2 Severe Drought
- D3 Extreme Drought
- D4 Exceptional Drought

*The Drought Monitor focuses on broad-scale conditions. Local conditions may vary. See accompanying text summary for forecast statements.*

Author:

Eric Luebehusen  
U.S. Department of Agriculture



Source: National Drought Mitigation Center, a partnership with USDA, U.S. Department of Commerce/NOAA, <http://droughtmonitor.unl.edu>.

## Texas Crop Progress and Condition (September 2019)

USDA, National Agricultural Statistics Service, Southern Plains Regional Field Office