



Texas Crop Progress and Condition

Southern Plains Regional Field Office
Post Office Box 70 Austin, Texas 78767
(800) 626-3142 · FAX (855) 270-2725 · www.nass.usda.gov/tx

Issue: TX-CW2619

Weekly Summary for July 22-July 28

Released: July 29, 2019

Conditions were mostly warm and dry across the state. However, a cold front entered the state on Tuesday, lowering temperatures in most parts of the state. Most of the state received little to no precipitation. The Southern High Plains, East Texas, and areas near the Gulf Coast received the most notable rains, ranging from trace amounts to 2 inches. There were 6.7 days suitable for fieldwork.

Small Grains: Some producers in the Edwards Plateau were preparing their fields for fall seedings of small grains.

Row Crops: Producers were concerned with the negative impact that flea hoppers might have on late planted cotton in the Southern High Plains and the Northern Low Plains. Cotton harvest was underway in areas of the Coastal Bend and South Texas. Aphid pressure was reported in sorghum in the Northern Low Plains and the Blacklands. Sorghum harvest started in South Central Texas. Corn harvest was active in the Blacklands, South Central Texas, Coastal Bend, the Upper Coast and South Texas. Rice was heading in the Upper Coast. Peanuts in South Texas were in the pegging stage and were being irrigated.

Fruit, Vegetable and Specialty Crops: Vegetable crops continued to progress in South Texas. Pecan orchards in South Texas, the Northern Low Plains and the Trans-Pecos were enjoying favorable weather, low pest pressure and adequate water supply.

Livestock, Range and Pasture: Livestock condition remained mostly good to fair across the state. Some cattle producers were using supplemental feed in South Texas and the Southern High Plains. Dusty conditions and wide temperature ranges from morning lows to afternoon highs were causing some livestock respiratory issues in the Northern Low Plains. Pasture and range condition continued to be rated mostly good to fair across the state.



2017 CENSUS OF AGRICULTURE

RESULTS NOW AVAILABLE

www.nass.usda.gov/AgCensus

USDA  United States Department of Agriculture
National Agricultural Statistics Service

Crop Progress

Stage	Percent of Acreage			
	Current Week	Previous Week	Previous Year	5 Year Average
Corn				
Silked	89	81	88	91
Dough	65	58	70	68
Dented	53	45	59	59
Cotton				
Squaring	83	74	82	83
Setting Bolls	34	24	34	34
Bolls Opening	10	5	11	8
Peanuts				
Pegging	32	26	64	57
Rice				
Headed	86	78	93	88
Harvested	4	N/A	5	5
Sorghum				
Headed	79	73	79	83
Coloring	70	53	70	64
Mature	45	27	58	53
Harvested	38	18	47	36
Soybeans				
Blooming	75	65	81	76
Setting Pods	48	35	50	48
Sunflowers				
Harvested	27	20	46	14

(NA) Not Available

Crop Condition

Crop	Percent of Acreage					Index ¹	
	Excellent	Good	Fair	Poor	Very Poor	2019	2018
Corn	17	52	27	3	1	82	58
Cotton	18	41	27	13	1	76	48
Peanuts	9	87	4	0	0	91	73
Rice	11	60	27	2	0	83	71
Sorghum	23	50	26	1	0	86	59
Soybeans	14	35	37	7	7	71	64
Range and Pasture	12	41	29	14	4	--	--

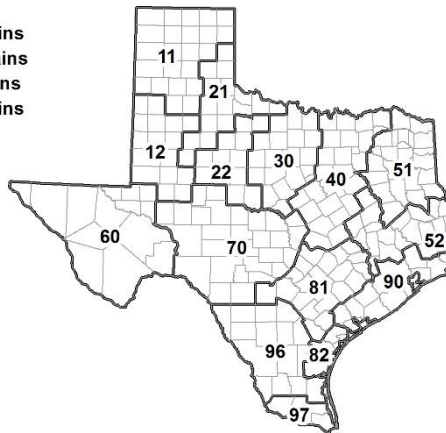
¹ The formula for the condition index is $I = (5V + 25P + 60F + 90G + 110E)/100$ where I = crop condition index and V, P, F, G, E = percentage of crop rated very poor, poor, fair, good, excellent.

Soil Moisture and Days Suitable by District

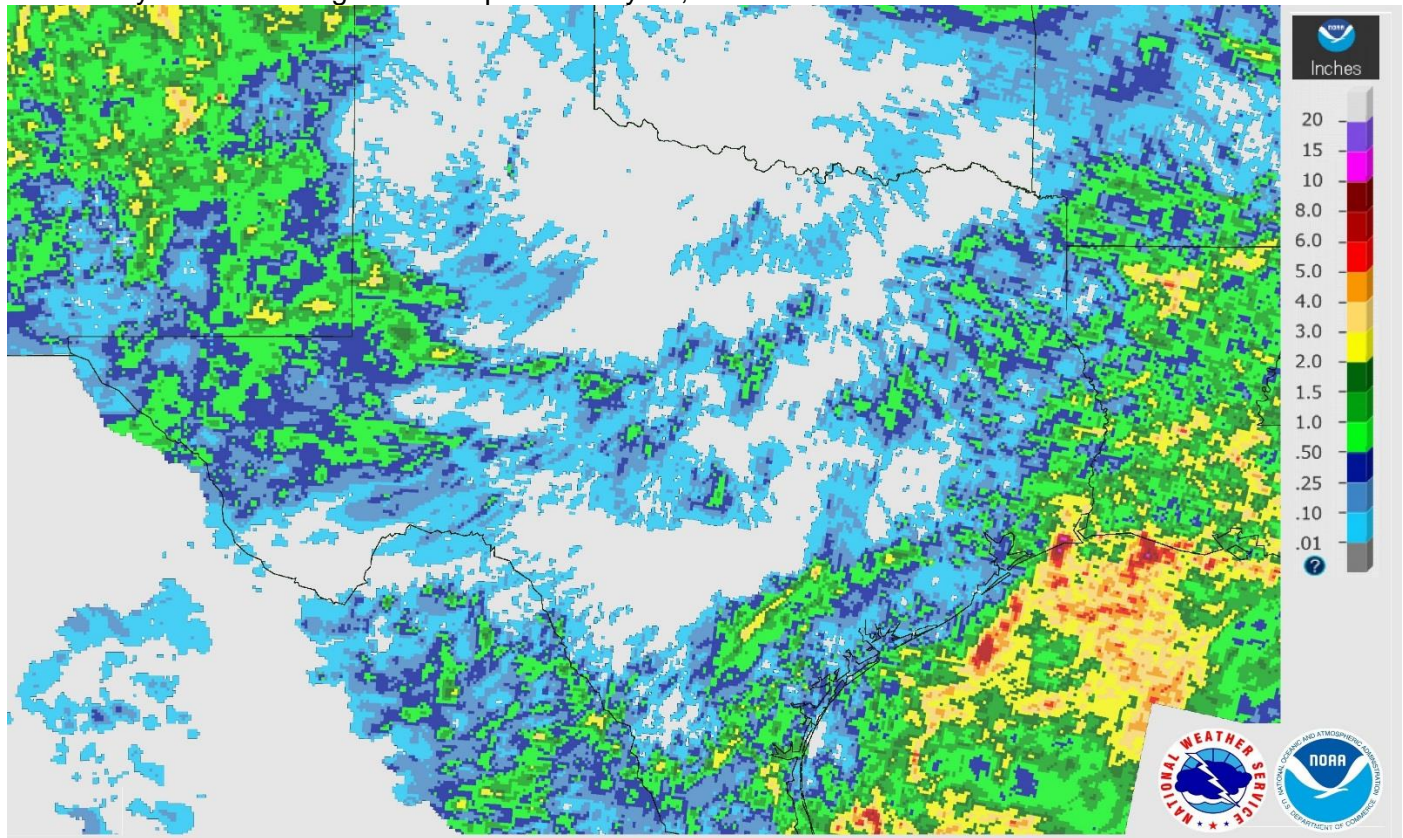
District	Topsoil Moisture Condition by District				Subsoil Moisture Condition by District				Days Suitable for Fieldwork
	Percentage of Acreage				Percentage of Acreage				
	Very Short	Short	Adequate	Surplus	Very Short	Short	Adequate	Surplus	
11	13	43	44	0	7	26	67	0	6.8
12	6	52	42	0	0	44	49	7	6.8
21	19	50	30	1	5	48	47	0	6.2
22	16	48	32	4	2	31	64	3	6.6
30	7	45	48	0	4	21	72	3	6.4
40	21	56	23	0	11	59	30	0	7.0
51	4	34	60	2	5	23	65	7	6.9
52	2	21	70	7	0	17	63	20	6.9
60	23	26	51	0	26	18	56	0	6.3
70	5	63	32	0	5	35	60	0	7.0
81	9	57	34	0	5	49	46	0	6.7
82	5	69	26	0	14	43	43	0	7.0
90	8	44	45	3	14	17	58	11	6.4
96	24	65	11	0	23	59	18	0	7.0
97	5	38	50	7	5	30	50	15	4.1
State	12	48	39	1	6	37	54	3	6.7

Texas Agricultural Districts

- 11 Northern High Plains
- 12 Southern High Plains
- 21 Northern Low Plains
- 22 Southern Low Plains
- 30 Cross Timbers
- 40 Blacklands
- 51 North East
- 52 South East
- 60 Trans-Pecos
- 70 Edwards Plateau
- 81 South Central
- 82 Coastal Bend
- 90 Upper Coast
- 96 South
- 97 Lower Valley

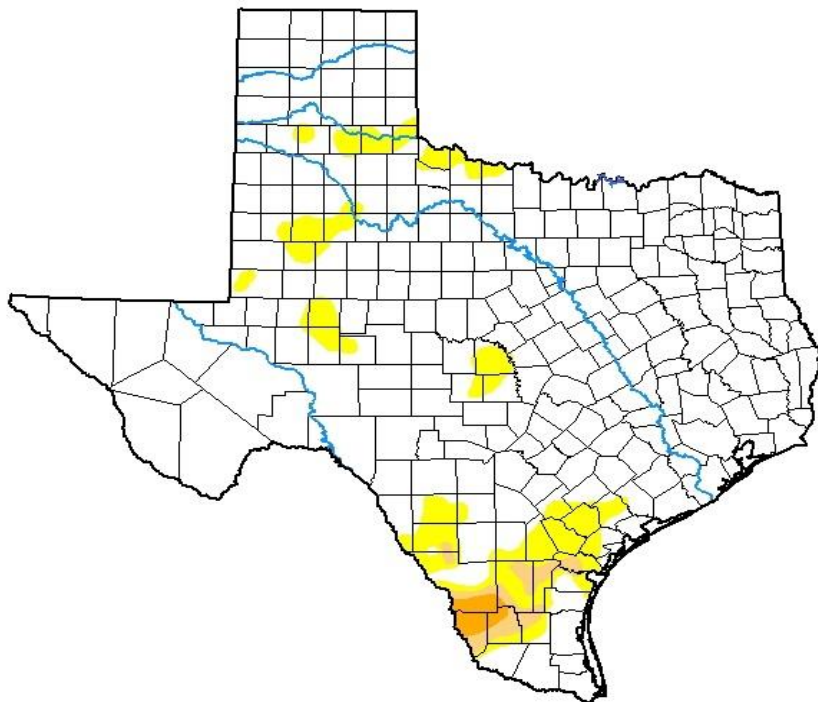


Seven Day Observed Regional Precipitation July 28, 2019.



Source: National Weather Service, www.nws.noaa.gov

Drought Monitor, Valid July 23, 2019



Drought Conditions (Percent Area)

	None	D0-D4	D1-D4	D2-D4	D3-D4	D4
Current	89.88	10.12	1.99	0.66	0.00	0.00
Last Week <i>07-16-2019</i>	93.14	6.86	1.67	0.58	0.00	0.00
3 Months Ago <i>04-23-2019</i>	79.75	20.25	1.29	0.00	0.00	0.00
Start of Calendar Year <i>01-01-2019</i>	92.99	7.01	1.32	0.00	0.00	0.00
Start of Water Year <i>09-25-2018</i>	57.46	42.54	20.19	7.03	0.96	0.00
One Year Ago <i>07-24-2018</i>	24.54	75.46	50.13	28.15	4.32	0.00

Intensity:

- None
- D0 Abnormally Dry
- D1 Moderate Drought
- D2 Severe Drought
- D3 Extreme Drought
- D4 Exceptional Drought

The Drought Monitor focuses on broad-scale conditions. Local conditions may vary. See accompanying text summary for forecast statements.

Author:

Brad Rippey
U.S. Department of Agriculture



Source: National Drought Mitigation Center, a partnership with USDA, U.S. Department of Commerce/NOAA, <http://droughtmonitor.unl.edu>

Texas Crop Progress and Condition (July 2019)

USDA, National Agricultural Statistics Service, Southern Plains Regional Field Office