



Texas Crop Progress and Condition

Southern Plains Regional Field Office

Post Office Box 70 Austin, Texas 78767

(800) 626-3142 · FAX (855) 270-2725 · www.nass.usda.gov/tx

Issue: TX-CW2419

Weekly Summary for July 8-July 14

Released: July 15, 2019

Warm temperatures were experienced across the state throughout the week. Scattered thunderstorms brought hail and high winds to areas of the Plains and the Blacklands. Precipitation ranged from trace amounts to 3 inches, with isolated areas in the Blacklands and the Upper Coast receiving upwards of 5 inches. There were 6.1 days suitable for fieldwork.

Small Grains: Wheat harvest was almost complete throughout the state. Only a few late fields remained in the High Plains.

Row Crops: Storms damaged cotton, corn and sorghum in isolated areas of the Northern High Plains. Cotton reached the squaring stage in areas of the Southern High Plains, was flowering in the Edwards Plateau and was opening bolls in South Texas. Producers in the Northern Low Plains reported aphid problems in sorghum. Corn and sorghum harvest was ongoing in the Coastal Bend. Peanuts continued to show rapid development in the Southern High Plains. Rice was heading in the Upper Coast. Soybeans continued to progress in the Blacklands.

Fruit, Vegetable and Specialty Crops: Melon harvest was in full swing in the Southern High Plains, the Cross Timbers and East Texas. Also peach and pea harvests were underway in East Texas. Pecans were being fertilized in the Southern High Plain and irrigated in South Texas.

Livestock, Range and Pasture: Livestock condition remained mostly good to fair across the state. However, high temperatures were stressing cattle in the Southern High Plains. Parasites continued to be a problem in small ruminants in the Southern Low Plains. Pasture and range condition continued to be rated mostly good to fair across the state. Army worms continued to be a problem in North East Texas.

Crop Condition

Crop	Percent of Acreage					Index ¹	
	Excellent	Good	Fair	Poor	Very Poor	2019	2018
Corn	19	51	27	2	1	84	56
Cotton	8	45	27	17	3	70	49
Peanuts	9	84	6	1	0	89	74
Rice	6	38	53	2	1	73	76
Sorghum	27	45	27	1	0	87	54
Soybeans	9	48	30	6	7	73	61
Wheat	18	41	38	2	1	80	43
Oats	5	46	32	10	7	69	72
Range and Pasture	18	49	25	7	1	81	54

¹ The formula for the condition index is $I = (5V + 25P + 60F + 90G + 110E)/100$ where I = crop condition index and V, P, F, G, E = percentage of crop rated very poor, poor, fair, good, excellent.

Crop Progress

Stage	Percent of Acreage			
	Current Week	Previous Week	Previous Year	5 Year Average
Corn				
Silked	75	73	75	74
Dough	50	48	56	54
Cotton				
Squaring	52	37	64	61
Setting Bolls	12	10	22	18
Peanuts				
Pegging	10	2	39	35
Rice				
Headed	64	50	76	68
Sorghum				
Headed	67	62	69	68
Coloring	49	45	59	53
Soybeans				
Blooming	62	61	66	57
Setting Pods	17	(NA)	33	22
Sunflowers				
Planted	89	85	(NA)	(NA)
Harvested	4	2	41	(NA)
Winter Wheat				
Harvested	97	92	94	97
Oats				
Harvested	96	94	99	97

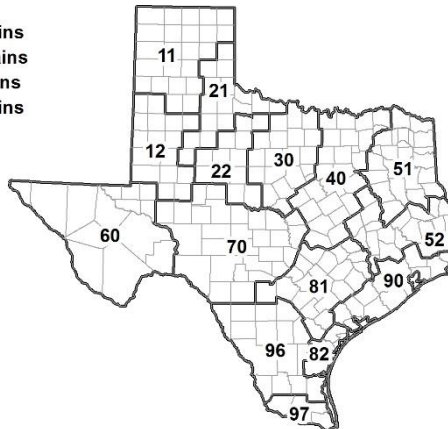
(NA) Not available.

Soil Moisture and Days Suitable by District

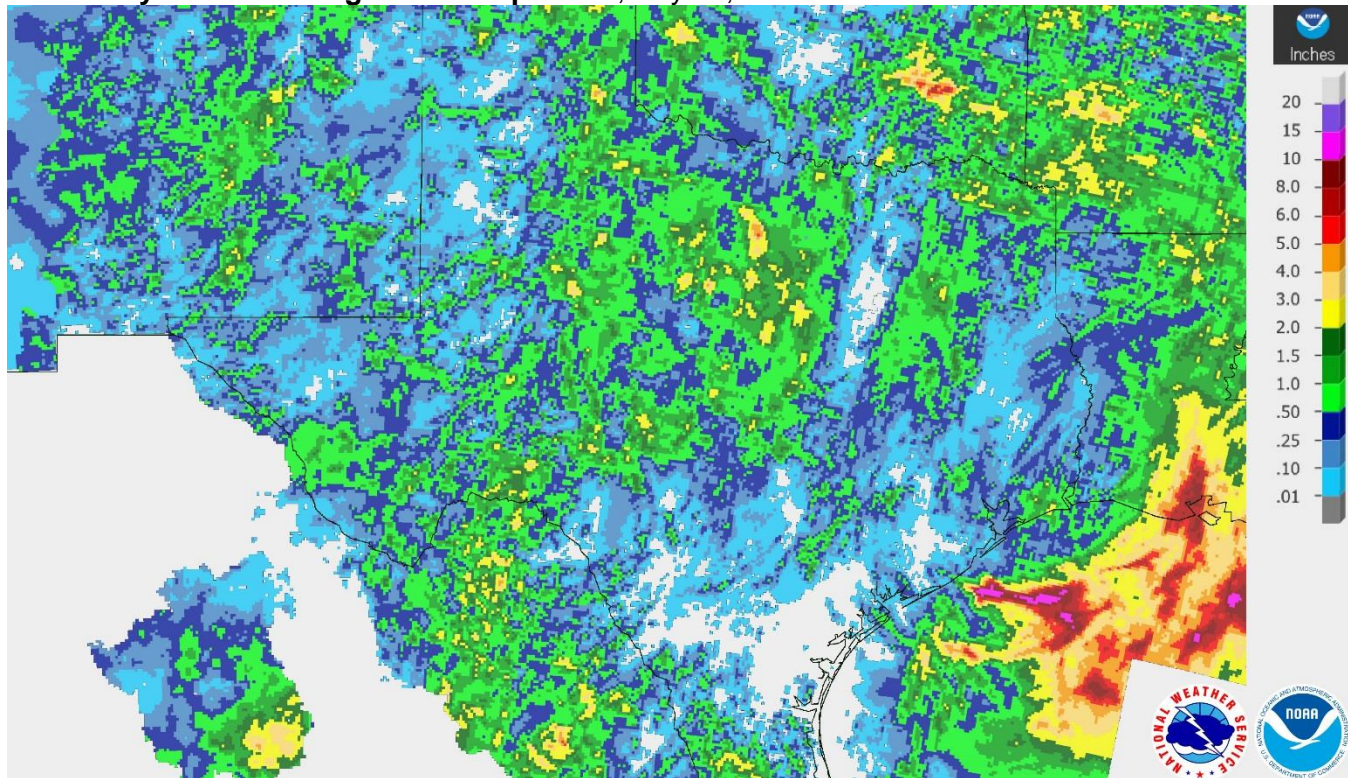
District	Topsoil Moisture Condition by District				Subsoil Moisture Condition by District				Days Suitable for Fieldwork
	Percentage of Acreage				Percentage of Acreage				
	Very Short	Short	Adequate	Surplus	Very Short	Short	Adequate	Surplus	
11	7	40	42	11	3	22	64	11	6.1
12	14	42	44	0	8	38	49	5	5.9
21	20	34	46	0	3	28	69	0	6.9
22	4	29	59	8	0	18	75	7	6.1
30	2	11	81	6	0	7	84	9	5.9
40	3	30	59	8	0	17	73	10	6.3
51	0	6	74	20	0	2	76	22	6.6
52	1	18	71	10	1	10	78	11	6.7
60	35	30	35	0	17	6	66	11	5.7
70	2	47	50	1	2	24	73	1	6.5
81	1	28	70	1	1	22	70	7	6.4
82	23	50	27	0	16	42	42	0	6.2
90	4	26	58	12	4	14	43	39	6.0
96	24	61	15	0	22	55	23	0	6.7
97	15	49	30	6	20	60	20	0	1.9
State	8	34	52	6	4	24	63	9	6.1

Texas Agricultural Districts

- 11 Northern High Plains
- 12 Southern High Plains
- 21 Northern Low Plains
- 22 Southern Low Plains
- 30 Cross Timbers
- 40 Blacklands
- 51 North East
- 52 South East
- 60 Trans-Pecos
- 70 Edwards Plateau
- 81 South Central
- 82 Coastal Bend
- 90 Upper Coast
- 96 South
- 97 Lower Valley

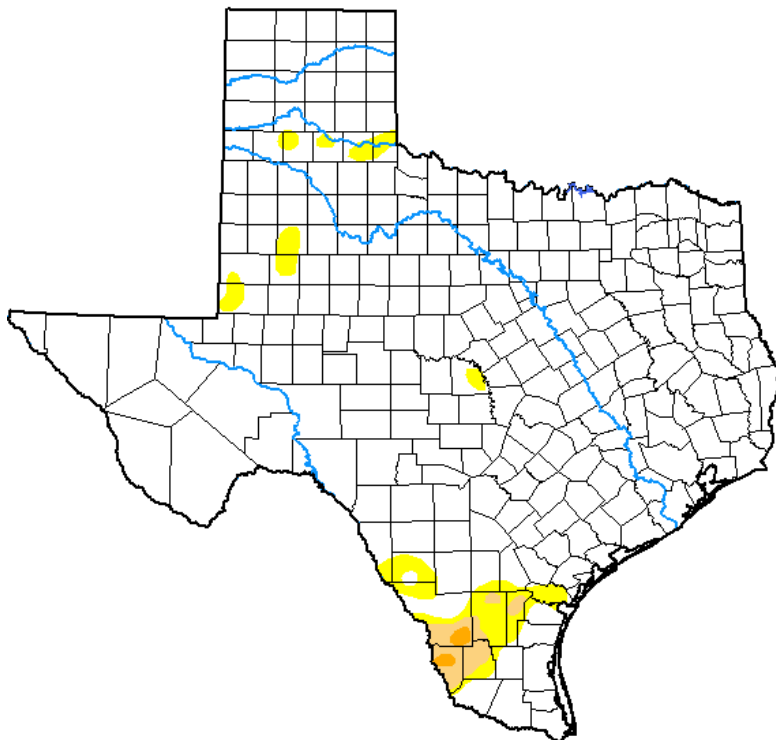


Seven Day Observed Regional Precipitation, July 14, 2019.



Source: National Weather Service, www.nws.noaa.gov.

Drought Monitor, Valid July 9, 2019.



Drought Conditions (Percent Area)

	None	D0-D4	D1-D4	D2-D4	D3-D4	D4
Current	95.13	4.87	1.30	0.20	0.00	0.00
Last Week <i>07-02-2019</i>	94.84	5.16	1.34	0.05	0.00	0.00
3 Months Ago <i>04-09-2019</i>	61.20	38.80	7.83	0.00	0.00	0.00
Start of Calendar Year <i>01-01-2019</i>	92.99	7.01	1.32	0.00	0.00	0.00
Start of Water Year <i>09-25-2018</i>	57.46	42.54	20.19	7.03	0.96	0.00
One Year Ago <i>07-10-2018</i>	24.87	75.13	49.41	19.07	4.95	0.00

Intensity:

- None
- D0 Abnormally Dry
- D1 Moderate Drought
- D2 Severe Drought
- D3 Extreme Drought
- D4 Exceptional Drought

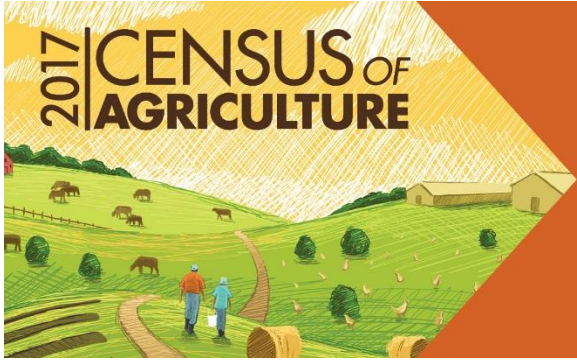
The Drought Monitor focuses on broad-scale conditions. Local conditions may vary. See accompanying text summary for forecast statements.

Author:

Richard Tinker
CPC/NOAA/NWS/NCEP



Source: National Drought Mitigation Center, a partnership with USDA, U.S. Department of Commerce/NOAA, <http://droughtmonitor.unl.edu>.



**RESULTS NOW
AVAILABLE**
www.nass.usda.gov/AgCensus



United States Department of Agriculture
National Agricultural Statistics Service