



---

Released July 19, 2019, by the National Agricultural Statistics Service (NASS), Agricultural Statistics Board, United States Department of Agriculture (USDA).

## United States Cattle on Feed Up 2 Percent

**Cattle and calves on feed** for the slaughter market in the United States for feedlots with capacity of 1,000 or more head totaled 11.5 million head on July 1, 2019. The inventory was 2 percent above July 1, 2018. This is the highest July 1 inventory since the series began in 1996. The inventory included 7.01 million steers and steer calves, down 2 percent from the previous year. This group accounted for 61 percent of the total inventory. Heifers and heifer calves accounted for 4.47 million head, up 8 percent from 2018.

**Placements** in feedlots during June totaled 1.76 million head, 2 percent below 2018. Net placements were 1.69 million head. During June, placements of cattle and calves weighing less than 600 pounds were 385,000 head, 600-699 pounds were 295,000 head, 700-799 pounds were 391,000 head, 800-899 pounds were 390,000 head, 900-999 pounds were 185,000 head, and 1,000 pounds and greater were 110,000 head.

**Marketings** of fed cattle during June totaled 1.95 million head, 3 percent below 2018.

**Other disappearance** totaled 66,000 head during June, 14 percent above 2018.

**Cattle on Feed Inventory, Placements, Marketings, and Other Disappearance on 1,000+ Capacity Feedlots – United States: July 1, 2018 and 2019**

| Item                                  | Number       |              | Percent of previous year |
|---------------------------------------|--------------|--------------|--------------------------|
|                                       | 2018         | 2019         |                          |
|                                       | (1,000 head) | (1,000 head) | (percent)                |
| On feed June 1 .....                  | 11,553       | 11,740       | 102                      |
| Placed on feed during June .....      | 1,798        | 1,756        | 98                       |
| Fed cattle marketed during June ..... | 2,006        | 1,945        | 97                       |
| Other disappearance during June ..... | 58           | 66           | 114                      |
| On feed July 1 .....                  | 11,287       | 11,485       | 102                      |

**Cattle on Feed Inventory, Placements, Marketings, and Other Disappearance on 1,000+ Capacity Feedlots – United States: June 1, 2018 and 2019**

| Item                                 | Number       |              | Percent of previous year |
|--------------------------------------|--------------|--------------|--------------------------|
|                                      | 2018         | 2019         |                          |
|                                      | (1,000 head) | (1,000 head) | (percent)                |
| On feed May 1 .....                  | 11,558       | 11,818       | 102                      |
| Placed on feed during May .....      | 2,124        | 2,064        | 97                       |
| Fed cattle marketed during May ..... | 2,056        | 2,070        | 101                      |
| Other disappearance during May ..... | 73           | 72           | 99                       |
| On feed June 1 .....                 | 11,553       | 11,740       | 102                      |

**Cattle on Feed by Class on 1,000+ Capacity Feedlots – United States: July 1, 2018 and 2019**

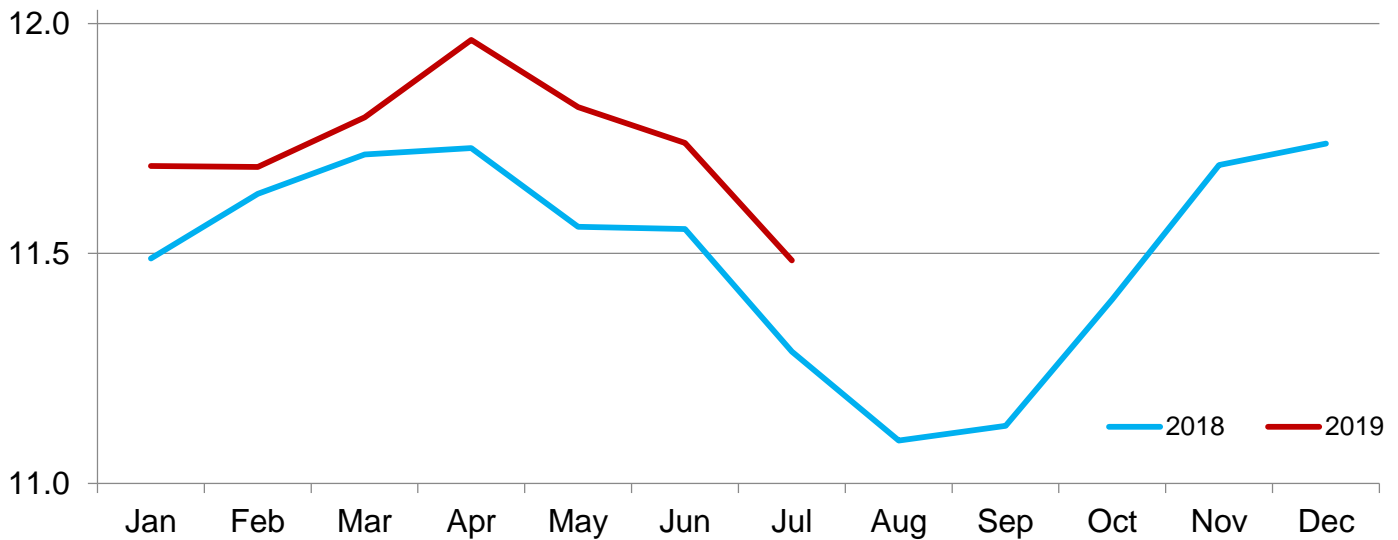
| Item                            | Number       |              | Percent of    |           |
|---------------------------------|--------------|--------------|---------------|-----------|
|                                 | 2018         | 2019         | previous year | inventory |
|                                 | (1,000 Head) | (1,000 Head) | (percent)     | (percent) |
| Class on feed July 1            |              |              |               |           |
| Steers and steer calves .....   | 7,133        | 7,013        | 98            | 61        |
| Heifers and heifer calves ..... | 4,154        | 4,472        | 108           | 39        |

**Cattle on Feed Inventory on 1,000+ Capacity Feedlots by Month – States and United States: 2018 and 2019**

| State               | July 1, 2018 | June 1, 2019 | July 1, 2019 |                          |                           |
|---------------------|--------------|--------------|--------------|--------------------------|---------------------------|
|                     |              |              | Number       | Percent of previous year | Percent of previous month |
|                     | (1,000 head) | (1,000 head) | (1,000 head) | (percent)                | (percent)                 |
| Arizona .....       | 297          | 310          | 300          | 101                      | 97                        |
| California .....    | 530          | 535          | 535          | 101                      | 100                       |
| Colorado .....      | 930          | 1,060        | 1,030        | 111                      | 97                        |
| Idaho .....         | 240          | 285          | 290          | 121                      | 102                       |
| Iowa .....          | 710          | 660          | 650          | 92                       | 98                        |
| Kansas .....        | 2,240        | 2,380        | 2,360        | 105                      | 99                        |
| Minnesota .....     | 135          | 130          | 125          | 93                       | 96                        |
| Nebraska .....      | 2,400        | 2,430        | 2,300        | 96                       | 95                        |
| Oklahoma .....      | 315          | 315          | 320          | 102                      | 102                       |
| South Dakota .....  | 215          | 230          | 210          | 98                       | 91                        |
| Texas .....         | 2,740        | 2,870        | 2,840        | 104                      | 99                        |
| Washington .....    | 230          | 240          | 235          | 102                      | 98                        |
| Other States .....  | 305          | 295          | 290          | 95                       | 98                        |
| United States ..... | 11,287       | 11,740       | 11,485       | 102                      | 98                        |

**Cattle on Feed Inventory on 1,000+ Capacity Feedlots – United States**

Million head

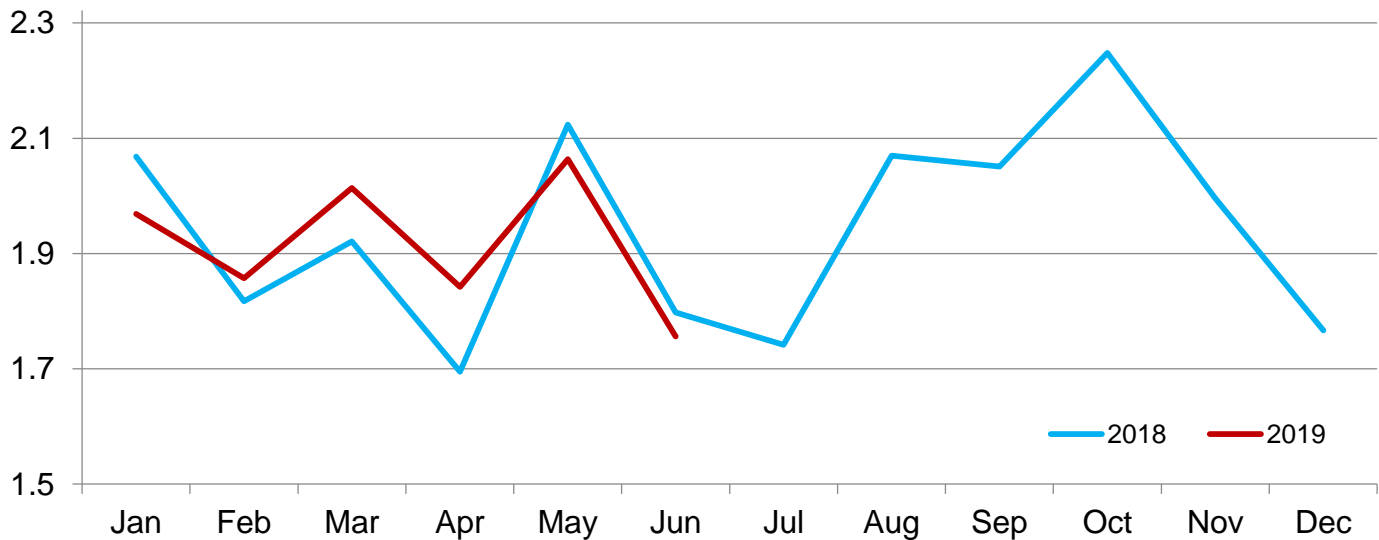


**Cattle Placed on Feed on 1,000+ Capacity Feedlots by Month – States and United States: 2018 and 2019**

| State               | During June 2018 | During May 2019 | During June 2019 |                          |                           |
|---------------------|------------------|-----------------|------------------|--------------------------|---------------------------|
|                     |                  |                 | Number           | Percent of previous year | Percent of previous month |
|                     | (1,000 head)     | (1,000 head)    | (1,000 head)     | (percent)                | (percent)                 |
| Arizona .....       | 22               | 24              | 17               | 77                       | 71                        |
| California .....    | 64               | 72              | 61               | 95                       | 85                        |
| Colorado .....      | 145              | 160             | 135              | 93                       | 84                        |
| Idaho .....         | 40               | 37              | 42               | 105                      | 114                       |
| Iowa .....          | 77               | 68              | 65               | 84                       | 96                        |
| Kansas .....        | 405              | 450             | 430              | 106                      | 96                        |
| Minnesota .....     | 14               | 16              | 16               | 114                      | 100                       |
| Nebraska .....      | 415              | 460             | 415              | 100                      | 90                        |
| Oklahoma .....      | 58               | 73              | 62               | 107                      | 85                        |
| South Dakota .....  | 39               | 40              | 31               | 79                       | 78                        |
| Texas .....         | 430              | 575             | 400              | 93                       | 70                        |
| Washington .....    | 46               | 37              | 32               | 70                       | 86                        |
| Other States .....  | 43               | 52              | 50               | 116                      | 96                        |
| United States ..... | 1,798            | 2,064           | 1,756            | 98                       | 85                        |

**Cattle Placed on 1000+ Capacity Feedlots – United States**

Million head



**Cattle Placed on Feed by Weight Group on 1,000+ Capacity Feedlots and Month – States and United States: 2018 and 2019**

| State            | During June 2018              |                             |                             |                             |                                       |                             |                            |                       |
|------------------|-------------------------------|-----------------------------|-----------------------------|-----------------------------|---------------------------------------|-----------------------------|----------------------------|-----------------------|
|                  | Under 600 lbs<br>(1,000 head) | 600-699 lbs<br>(1,000 head) | 700-799 lbs<br>(1,000 head) | 800-899 lbs<br>(1,000 head) | 900+ lbs <sup>1</sup><br>(1,000 head) | 900-999 lbs<br>(1,000 head) | 1,000+ lbs<br>(1,000 head) | Total<br>(1,000 head) |
| Colorado .....   | 25                            | 30                          | 35                          | 30                          | 25                                    | (D)                         | (D)                        | 145                   |
| Kansas .....     | 65                            | 90                          | 110                         | 90                          | 50                                    | (D)                         | (D)                        | 405                   |
| Nebraska .....   | 40                            | 60                          | 80                          | 110                         | 125                                   | (D)                         | (D)                        | 415                   |
| Texas .....      | 160                           | 110                         | 85                          | 55                          | 20                                    | (D)                         | (D)                        | 430                   |
| Other States ... | 110                           | 55                          | 75                          | 93                          | 70                                    | (D)                         | (D)                        | 403                   |
| United States .. | 400                           | 345                         | 385                         | 378                         | (X)                                   | 190                         | 100                        | 1,798                 |

| State            | During May 2019               |                             |                             |                             |                                       |                             |                            |                       |
|------------------|-------------------------------|-----------------------------|-----------------------------|-----------------------------|---------------------------------------|-----------------------------|----------------------------|-----------------------|
|                  | Under 600 lbs<br>(1,000 head) | 600-699 lbs<br>(1,000 head) | 700-799 lbs<br>(1,000 head) | 800-899 lbs<br>(1,000 head) | 900+ lbs <sup>1</sup><br>(1,000 head) | 900-999 lbs<br>(1,000 head) | 1,000+ lbs<br>(1,000 head) | Total<br>(1,000 head) |
| Colorado .....   | 25                            | 20                          | 35                          | 45                          | 35                                    | (D)                         | (D)                        | 160                   |
| Kansas .....     | 50                            | 70                          | 130                         | 125                         | 75                                    | (D)                         | (D)                        | 450                   |
| Nebraska .....   | 40                            | 45                          | 85                          | 145                         | 145                                   | (D)                         | (D)                        | 460                   |
| Texas .....      | 145                           | 120                         | 165                         | 115                         | 30                                    | (D)                         | (D)                        | 575                   |
| Other States ... | 110                           | 50                          | 85                          | 109                         | 65                                    | (D)                         | (D)                        | 419                   |
| United States .. | 370                           | 305                         | 500                         | 539                         | (X)                                   | 235                         | 115                        | 2,064                 |

| State            | During June 2019              |                             |                             |                             |                                       |                             |                            |                       |
|------------------|-------------------------------|-----------------------------|-----------------------------|-----------------------------|---------------------------------------|-----------------------------|----------------------------|-----------------------|
|                  | Under 600 lbs<br>(1,000 head) | 600-699 lbs<br>(1,000 head) | 700-799 lbs<br>(1,000 head) | 800-899 lbs<br>(1,000 head) | 900+ lbs <sup>1</sup><br>(1,000 head) | 900-999 lbs<br>(1,000 head) | 1,000+ lbs<br>(1,000 head) | Total<br>(1,000 head) |
| Colorado .....   | 25                            | 20                          | 30                          | 30                          | 30                                    | (D)                         | (D)                        | 135                   |
| Kansas .....     | 60                            | 80                          | 130                         | 105                         | 55                                    | (D)                         | (D)                        | 430                   |
| Nebraska .....   | 40                            | 55                          | 80                          | 115                         | 125                                   | (D)                         | (D)                        | 415                   |
| Texas .....      | 160                           | 90                          | 80                          | 50                          | 20                                    | (D)                         | (D)                        | 400                   |
| Other States ... | 100                           | 50                          | 71                          | 90                          | 65                                    | (D)                         | (D)                        | 376                   |
| United States .. | 385                           | 295                         | 391                         | 390                         | (X)                                   | 185                         | 110                        | 1,756                 |

(D) Withheld to avoid disclosing data for individual operations.

(X) Not applicable.

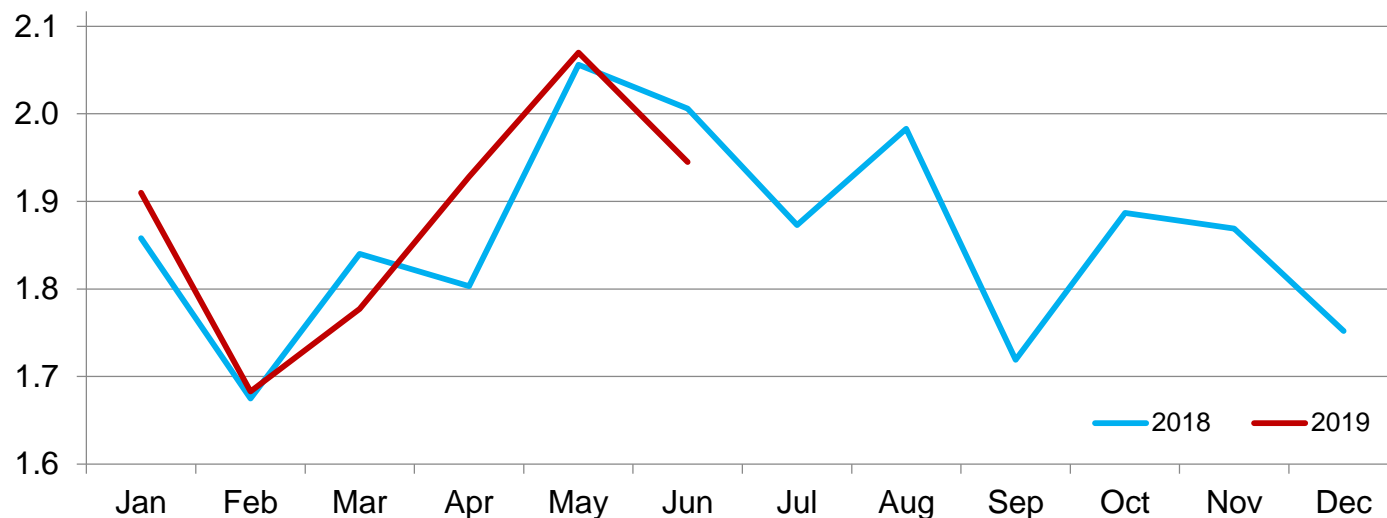
<sup>1</sup> The 900 pounds and greater weight group is the sum of 900-999 pounds and 1,000 pounds and greater weight groups.

**Cattle Marketed on 1,000+ Capacity Feedlots by Month – States and United States: 2018 and 2019**

| State               | During June 2018<br>(1,000 head) | During May 2019<br>(1,000 head) | During June 2019       |                                       |  |
|---------------------|----------------------------------|---------------------------------|------------------------|---------------------------------------|--|
|                     |                                  |                                 | Number<br>(1,000 head) | Percent of previous year<br>(percent) | Percent of previous month<br>(percent) |
|                     |                                  |                                 | Arizona .....          | 22                                    | 26                                     |
| California .....    | 54                               | 63                              | 57                     | 106                                   | 90                                     |
| Colorado .....      | 160                              | 150                             | 160                    | 100                                   | 107                                    |
| Idaho .....         | 44                               | 35                              | 36                     | 82                                    | 103                                    |
| Iowa .....          | 85                               | 85                              | 72                     | 85                                    | 85                                     |
| Kansas .....        | 475                              | 440                             | 440                    | 93                                    | 100                                    |
| Minnesota .....     | 23                               | 25                              | 20                     | 87                                    | 80                                     |
| Nebraska .....      | 530                              | 570                             | 520                    | 98                                    | 91                                     |
| Oklahoma .....      | 57                               | 62                              | 56                     | 98                                    | 90                                     |
| South Dakota .....  | 56                               | 49                              | 48                     | 86                                    | 98                                     |
| Texas .....         | 410                              | 485                             | 420                    | 102                                   | 87                                     |
| Washington .....    | 35                               | 31                              | 36                     | 103                                   | 116                                    |
| Other States .....  | 55                               | 49                              | 54                     | 98                                    | 110                                    |
| United States ..... | 2,006                            | 2,070                           | 1,945                  | 97                                    | 94                                     |

# Cattle Marketed on 1,000+ Capacity Feedlots – United States

Million head



## Cattle Other Disappearance on 1,000+ Capacity Feedlots by Month – States and United States: 2018 and 2019

| State               | During June 2018<br>(1,000 head) | During May 2019<br>(1,000 head) | During June 2019       |                                       |  |
|---------------------|----------------------------------|---------------------------------|------------------------|---------------------------------------|--|
|                     |                                  |                                 | Number<br>(1,000 head) | Percent of previous year<br>(percent) | Percent of previous month<br>(percent) |
| Arizona .....       | 1                                | 1                               | 1                      | 100                                   | 100                                    |
| California .....    | 5                                | 4                               | 4                      | 80                                    | 100                                    |
| Colorado .....      | 5                                | 10                              | 5                      | 100                                   | 50                                     |
| Idaho .....         | 1                                | 2                               | 1                      | 100                                   | 50                                     |
| Iowa .....          | 2                                | 3                               | 3                      | 150                                   | 100                                    |
| Kansas .....        | 10                               | 10                              | 10                     | 100                                   | 100                                    |
| Minnesota .....     | 1                                | 1                               | 1                      | 100                                   | 100                                    |
| Nebraska .....      | 15                               | 20                              | 25                     | 167                                   | 125                                    |
| Oklahoma .....      | 1                                | 1                               | 1                      | 100                                   | 100                                    |
| South Dakota .....  | 3                                | 6                               | 3                      | 100                                   | 50                                     |
| Texas .....         | 10                               | 10                              | 10                     | 100                                   | 100                                    |
| Washington .....    | 1                                | 1                               | 1                      | 100                                   | 100                                    |
| Other States .....  | 3                                | 3                               | 1                      | 33                                    | 33                                     |
| United States ..... | 58                               | 72                              | 66                     | 114                                   | 92                                     |

**Cattle on Feed by Class on 1,000+ Capacity Feedlots by Quarter – States and United States:  
2018 and 2019**

| State               | Steers and steer calves |                |                | Heifers and heifer calves |                |                |
|---------------------|-------------------------|----------------|----------------|---------------------------|----------------|----------------|
|                     | Jul 1,<br>2018          | Apr 1,<br>2019 | Jul 1,<br>2019 | Jul 1,<br>2018            | Apr 1,<br>2019 | Jul 1,<br>2019 |
|                     | (1,000 Head)            | (1,000 Head)   | (1,000 Head)   | (1,000 Head)              | (1,000 Head)   | (1,000 Head)   |
| Arizona .....       | 290                     | 305            | 293            | 7                         | 9              | 7              |
| California .....    | 470                     | 465            | 460            | 60                        | 70             | 75             |
| Colorado .....      | 520                     | 580            | 520            | 410                       | 480            | 510            |
| Idaho .....         | 170                     | 185            | 195            | 70                        | 100            | 95             |
| Iowa .....          | 520                     | 480            | 480            | 190                       | 230            | 170            |
| Kansas .....        | 1,150                   | 1,320          | 1,240          | 1,090                     | 1,060          | 1,120          |
| Minnesota .....     | 108                     | 130            | 110            | 27                        | 20             | 15             |
| Nebraska .....      | 1,580                   | 1,610          | 1,410          | 820                       | 970            | 890            |
| Oklahoma .....      | 180                     | 170            | 155            | 135                       | 145            | 165            |
| South Dakota .....  | 130                     | 145            | 130            | 85                        | 105            | 80             |
| Texas .....         | 1,680                   | 1,730          | 1,700          | 1,060                     | 1,120          | 1,140          |
| Washington .....    | 145                     | 140            | 140            | 85                        | 85             | 95             |
| Other States .....  | 190                     | 190            | 180            | 115                       | 120            | 110            |
| United States ..... | 7,133                   | 7,450          | 7,013          | 4,154                     | 4,514          | 4,472          |

## Terms and Definitions of Cattle on Feed Estimates

**Cattle on feed** are steers and heifers being fed a ration of grain, silage, hay and/or protein supplement for slaughter market that are expected to produce a carcass that will grade select or better. It excludes cattle being "backgrounded only" for later sale as feeders or later placement in another feedlot.

**Placements** are steers and heifers put into a feedlot, fed a ration which will produce a carcass that will grade select or better, and are intended for the slaughter market.

**Marketings** are steers and heifers shipped out of feedlots to a slaughter market.

**Other disappearance** includes death loss, movement from feedlots to pasture, and shipments to other feedlots for further feeding.

## Statistical Methodology

**Survey Procedures:** During January and July all known feedlots in the United States with capacity of 1,000 or more head are surveyed to provide data for cattle on feed estimates. During the other months, all known feedlots from 16 States are surveyed. The 16 States account for approximately 98 percent of the cattle on feed in feedlots with capacity of 1,000 or more head. Individual State estimates are published monthly for 12 of the 16 States. Data collected from the remaining 4 States are used to establish the "Other States" estimates. These 4 States include Illinois, New Mexico, Oregon, and Wyoming. The "Other States" category represents all cattle on feed with a capacity of 1,000 or more head for the rest of the United States.

**Estimating Procedures:** These cattle on feed estimates were prepared by the Agricultural Statistics Board after reviewing recommendations and analysis submitted by Regional Field Offices. Regional and State survey data were reviewed for reasonableness with each other and with estimates from the previous month when establishing the current estimates.

**Revision Policy:** Revisions to previous estimates are made to improve month to month relationships. Estimates for the previous month are subject to revision in all States each month when current estimates are made. In February, all monthly estimates for the previous year, and the number of feedlots and annual marketings from two years ago are reviewed and subject to revisions. The reviews are primarily based on slaughter data, state check-off or brand data, and any other data that may have been received after the original estimate was made. Estimates will also be reviewed after data from the *Census of Agriculture* are available. No revisions will be made after that date and estimates become final.

**Reliability:** Since all 1,000+ capacity cattle on feed operators in every State are not included in the monthly survey, survey estimates are subject to sampling variability. Survey results are also subject to non-sampling errors such as omissions, duplications, and mistakes in reporting, recording, and processing the data. The effects of these errors cannot be measured directly. They are minimized through rigid quality controls in the data collection process and through a careful review of all reported data for consistency and reasonableness.

To assist users in evaluating the reliability of estimates in this report, the "**Root Mean Square Error**" is shown for selected items in the table on the following page. The "Root Mean Square Error" is a statistical measure based on past performance and is computed using the differences between first and latest estimates. The "Root Mean Square Error" for cattle on feed inventory estimates over the past 24 months is 0.0 percent. This means that chances are 2 out of 3 that the final estimate will not be above or below the current estimate of 11.5 million head by more than 0.0 percent. Chances are 9 out of 10 that the difference will not exceed 0.0 percent.

The table on the following page shows a 24 month record of the range of differences between first and latest estimates for selected items. Using estimates of number on feed as an example, changes between the first estimate and the latest estimate during the past 24 months have averaged 1,000 head, ranging from 0 to 10,000 head. During this period the initial estimate has been above the latest estimate 0 times and has been below the latest estimate 2 times. This does not imply that the initial estimate is likely to understate or overstate final inventory.



## Reliability of Monthly Cattle on Feed Estimates

[Based on data for the past 24 months]

| Item                 | Root mean square error | 90 percent confidence level | Difference between first and latest estimate |          |         |              |              |
|----------------------|------------------------|-----------------------------|--|----------|---------|--------------|--------------|
|                      |                        |                             | Average                                      | Smallest | Largest | Months       |              |
|                      |                        |                             |  |          |         | Below latest | Above latest |
|                      | (percent)              | (percent)                   | (1,000)                                      | (1,000)  | (1,000) | (number)     | (number)     |
| Number on feed ..... | 0.0                    | 0.0                         | 1  | 0        | 10      | 2            | 0            |
| Placements .....     | 0.1                    | 0.2                         | 1  | 0        | 10      | 2            | 0            |
| Marketings .....     | 0.0                    | 0.0                         | 0  | 0        | 0       | 0            | 0            |

## Information Contacts

Listed below are the commodity specialists in the Livestock Branch of the National Agricultural Statistics Service to contact for additional information. E-mail inquiries may be sent to [nass@usda.gov](mailto:nass@usda.gov).

|   |                |
|---|----------------|
| Travis Averill, Chief, Livestock Branch .....     | (202) 720-3570 |
| Scott Hollis, Head, Livestock Section .....       | (202) 690-2424 |
| Sherry Bertramsen – Livestock Slaughter .....     | (202) 690-8632 |
| Holly Brenize – Sheep and Goats .....             | (202) 720-0585 |
| Donnie Fike – Dairy Products .....                | (202) 720-4448 |
| Heidi Lanouette – Cattle, Cattle on Feed .....    | (202) 720-3040 |
| Mike Miller – Milk Production and Milk Cows ..... | (202) 720-3278 |
| Seth Riggins – Hogs and Pigs .....                | (202) 720-3106 |

## Access to NASS Reports

For your convenience, you may access NASS reports and products the following ways:

- All reports are available electronically, at no cost, on the NASS web site: [www.nass.usda.gov](http://www.nass.usda.gov)
- Both national and state specific reports are available via a free e-mail subscription. To set-up this free subscription, visit [www.nass.usda.gov](http://www.nass.usda.gov) and click on “National” or “State” in upper right corner above “search” box to create an account and select the reports you would like to receive.
- Cornell’s Mann Library has launched a new website housing NASS’s and other agency’s archived reports. The new website, <https://usda.library.cornell.edu>. All email subscriptions containing reports will be sent from the new website, <https://usda.library.cornell.edu>. To continue receiving the reports via e-mail, you will have to go to the new website, create a new account and re-subscribe to the reports. If you need instructions to set up an account or subscribe, they are located at: <https://usda.library.cornell.edu/help>. You should whitelist [notifications@usda-esmis.library.cornell.edu](mailto:notifications@usda-esmis.library.cornell.edu) in your email client to avoid the emails going into spam/junk folders.

For more information on NASS surveys and reports, call the NASS Agricultural Statistics Hotline at (800) 727-9540, 7:30 a.m. to 4:00 p.m. ET, or e-mail: [nass@nass.usda.gov](mailto:nass@nass.usda.gov).

The U.S. Department of Agriculture (USDA) prohibits discrimination against its customers, employees, and applicants for employment on the basis of race, color, national origin, age, disability, sex, gender identity, religion, reprisal, and where applicable, political beliefs, marital status, familial or parental status, sexual orientation, or all or part of an individual's income is derived from any public assistance program, or protected genetic information in employment or in any program or activity conducted or funded by the Department. (Not all prohibited bases will apply to all programs and/or employment activities.)

If you wish to file a Civil Rights program complaint of discrimination, complete the [USDA Program Discrimination Complaint Form](#) (PDF), found online at [www.ascr.usda.gov/filing-program-discrimination-complaint-usda-customer](http://www.ascr.usda.gov/filing-program-discrimination-complaint-usda-customer), or at any USDA office, or call (866) 632-9992 to request the form. You may also write a letter containing all of the information requested in the form. Send your completed complaint form or letter to us by mail at U.S. Department of Agriculture, Director, Office of Adjudication, 1400 Independence Avenue, S.W., Washington, D.C. 20250-9410, by fax (202) 690-7442 or email at [program.intake@usda.gov](mailto:program.intake@usda.gov).