



Vesicular Stomatitis

What is Vesicular Stomatitis (VS)?

Vesicular stomatitis is a viral disease that primarily affects horses and cattle. VS also can affect sheep, goats, llamas, alpacas, swine, deer and some other species, including bobcats, raccoons and monkeys. Humans can also become infected with the disease when handling affected animals, but this is a rare event. Vesicular stomatitis has been confirmed only in the Western Hemisphere. It is known to be an endemic disease in the warmer regions of North, Central, and South America, but outbreaks of the disease in other temperate geographic parts of the hemisphere occur sporadically.

In the past decade, the Southwestern and Western United States have experienced a number of vesicular stomatitis outbreaks. Outbreaks usually occur during the warmer months, often along waterways. In some years, only a few premises in a single state have been affected. However, in other years, multiple states and many premises have been involved.

Since there could be a vesicular stomatitis outbreak in any given year, it is essential that veterinarians and livestock owners be on the alert for animals displaying clinical signs of the disease.

Foot-and-Mouth Disease (FMD) or Vesicular Stomatitis?

At first glance, blisters, erosions in the mouth, excessive salivation, or crusty sores around an animal's muzzle, teats or hooves bring to mind the dreaded and highly contagious foreign animal virus, Foot-and-Mouth Disease (FMD). FMD has not been detected in the U.S. since 1929, but animal health officials and ranchers remain on guard for an accidental or intentional introduction of the disease. Although Vesicular Stomatitis (VS) mimics the disease signs of FMD, VS is endemic, or naturally occurring in the U.S. and outbreaks occur sporadically. Unlike FMD, VS can affect horses.

The Cycle of VS

VS normally has an incubation period of two to eight days before the infected animal develops blisters that swell and burst, leaving painful sores. The virus can be transmitted through direct contact with infected animals or by blood-feeding insects. Infected animals

also can spread the virus when their saliva or the fluid from ruptured blisters contaminates feed, water or hay shared with herd mates.

Sick animals should be isolated and may need supportive care to prevent a secondary infection where blisters have broken. Painful lesions also can form around animals' hooves, resulting in temporary lameness.

Infected dairy cattle may have a dramatic drop in milk production. Although milk is not regarded as a vehicle for transmitting VS, raw milk from infected cows should not be consumed because it may be contaminated with vesicular fluid from lesions on the teats.

Pasteurization, or heat treatment, will kill the VS virus, making milk safe to consume. In two or three weeks, VS infection will usually run its course and animals will begin healing. VS outbreaks usually, but not always, end with the fall or winter's first freeze.

Ranchers, veterinarians and others who handle sick animals should wear rubber or latex gloves as a biosecurity measure to prevent the spread of disease to other animals, or to themselves. In rare instances, humans can contract VS and develop a flu-like illness that lasts four to seven days.

How VS is Diagnosed

When a producer or private veterinary practitioner reports that an animal has blisters, erosions or sores, Texas Animal Health Commission (TAHC) or U.S. Department of Agriculture (USDA) veterinarians, trained as foreign animal disease diagnosticians, will assist in the disease investigation. They will work with the owner's private veterinary practitioner at no charge to take a health history and ask questions about the animals' recent movements to and from the premises. Finally, blood samples, swabs and/ or tiny snippets of tissue will be collected from the blisters or sores on the affected animals.

The samples will be packaged and shipped to the appropriate laboratory for testing at no cost to owners. Most results are reported in two or three days, but virus isolation testing may require up to 14 days.

In the meantime, all animals on the affected premises will be placed under a hold order by the TAHC to stop animal movement as a measure to protect against the spread of disease.

It is vitally important that livestock owners report potential cases of VS, so that samples can be collected and tested to confirm VS and rule out other diseases.

More about VS

The good news: If VS is confirmed, infected animals are quarantined for 21 days after all lesions are healed. This short-term quarantine helps prevent the movement of animals and the spread of the disease to other premises, fairs or markets.

Depending on the severity of the blisters and resulting lesions, healing can be complete in two weeks but may require a month or longer. Prior to releasing the quarantine, the animals must be re-examined by a USDA or TAHC representative to ensure the disease has been cleared.

Although VS rarely results in death, infected animals lose condition, because they do not eat or drink when the blisters and ulcers are present. When an animal is badly infected, an owner may opt to have an animal euthanized to end its suffering.

Researchers have determined that outbreaks initially are started by a virus transmitted by arthropods, black flies and sand flies. They have not, however, been able to determine why infection occurs sporadically, and

where the virus resides during the years when VS is not present.

Strategies for Preventing VS

Even with the best defensive measures, VS could infect a herd. However, these tips may help protect livestock:

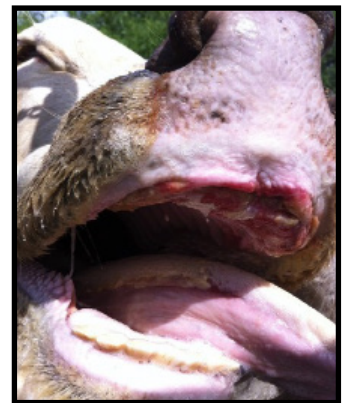
1. Control biting flies
2. Keep equine animals stalled or under a roof at night to reduce exposure to flies
3. Keep stalls clean
4. Feed and water stock from their individual buckets
5. Disinfect borrowed equipment or tools prior to using them on your premises
6. Don't visit a ranch that's under quarantine for VS. Wait until the animals have healed

Trade Implications of VS

Confirmed cases of VS must be reported to interstate and international trading partners, which may result in restrictions, additional inspections or testing requirements. Prior to shipping livestock during a VS outbreak, check with the state of destination to ensure all entry requirements have been met. To obtain contact information for other states' animal health regulatory officials, contact the TAHC at 1-800-550-8242.



Texas equine case 2014



Texas bovine case 2014

Information provided by the
Texas Animal Health Commission
P.O. Box 12966 - Austin, TX 78711-2966
www.tahc.texas.gov
800-550-8242

