



United States Department of Agriculture
National Agricultural Statistics Service



Texas Crop Progress and Condition

Southern Plains Regional Field Office
Post Office Box 70 Austin, Texas 78767
(800) 626-3142 · FAX (855) 270-2725 · www.nass.usda.gov/tx

Issue: TX-CW1819

Weekly Summary for May 27-June 2

Released: June 3, 2019

Warm temperatures, along with isolated thunderstorms continued across most of the state last week. Precipitation ranged from trace amounts to 3 inches, with isolated areas getting upwards of 5 inches in the Cross Timbers, the Blacklands and North East Texas. There were 4.9 days suitable for fieldwork.

Small Grains: Winter wheat was mostly in good to fair condition in the High Plains. Harvest was underway in the Low Plains. Conditions in the Blacklands, South Central Texas, and the Edwards Plateau were more favorable for small grains harvest.

Row Crops: Cotton planting in the Plains, the Cross Timbers, East Texas, the Trans-Pecos, the Edwards Plateau and the Blacklands was active where conditions allowed. Wet conditions and hail caused concerns in areas of the Northern and Southern High Plains, with some producers considering replant options. In some extreme cases cotton acreage may be prevented from being planted at all. Producers in South Central Texas, the Coastal Bend, and South Texas were applying weed control to cotton fields. Warm temperatures improved corn and sorghum condition in the Southern High Plains, South Texas and the Edwards Plateau. Producers in the Upper Coast were trying to complete rice planting before the May 31st RMA final planting date. Peanut planting continued in South Texas, the Northern low Plains and the Cross Timbers.

Fruit, Vegetable and Specialty Crops: Watermelons were developing in the Southern Low Plains. Potato harvest continued in South Texas, while cabbage and onion harvest reached completion. Vegetable crops progressed in South Texas. Producers were irrigating pecans in the Trans-Pecos.

Livestock, Range and Pasture: Livestock condition remained mostly good to fair across the state. Producers in the Edwards Plateau were controlling internal parasites in sheep and goats. Insect activity remained high in the Northern Low Plains and East Texas. Pasture and range condition continued to be rated mostly good to fair.

Crop Progress

Stage	Percent of Acreage			
	Current Week	Previous Week	Previous Year	5 Year Average
Corn				
Planted	96	93	95	95
Emerged	85	81	90	89
Silked	36	18	38	33
Cotton				
Planted	64	48	67	62
Squaring	11	7	12	9
Peanuts				
Planted	68	62	87	84
Rice				
Planted	93	85	100	96
Emerged	85	81	94	94
Headed	2	(NA)	1	
Sorghum				
Planted	85	80	95	85
Headed	35	28	39	34
Coloring	5	(NA)	7	7
Soybeans				
Planted	75	70	84	83
Emerged	57	55	72	70
Blooming	6		6	3
Sunflowers				
Planted	56	27	54	67
Winter Wheat				
Harvested	22	11	33	25
Oats				
Headed	83	(NA)	100	100
Harvested	50	20	53	42

(NA) Not available.

Crop Condition

Crop	Percent of Acreage					Index ¹	
	Excellent	Good	Fair	Poor	Very Poor	2019	2018
Corn	17	60	20	1	2	85	68
Peanuts	0	92	8	0	0	88	56
Rice	7	42	49	2	0	75	80
Sorghum	24	50	25	0	1	86	49
Soybeans	20	40	23	8	9	74	70
Wheat	21	43	30	5	1	81	39
Oats	5	47	34	8	6	70	65
Range and Pasture	17	50	25	7	1	--	--

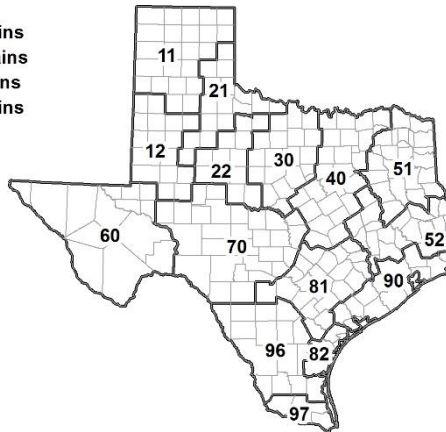
¹ The formula for the condition index is $I = (5V + 25P + 60F + 90G + 110E)/100$ where I = crop condition index and V, P, F, G, E = percentage of crop rated very poor, poor, fair, good, excellent.

Soil Moisture and Days Suitable by District

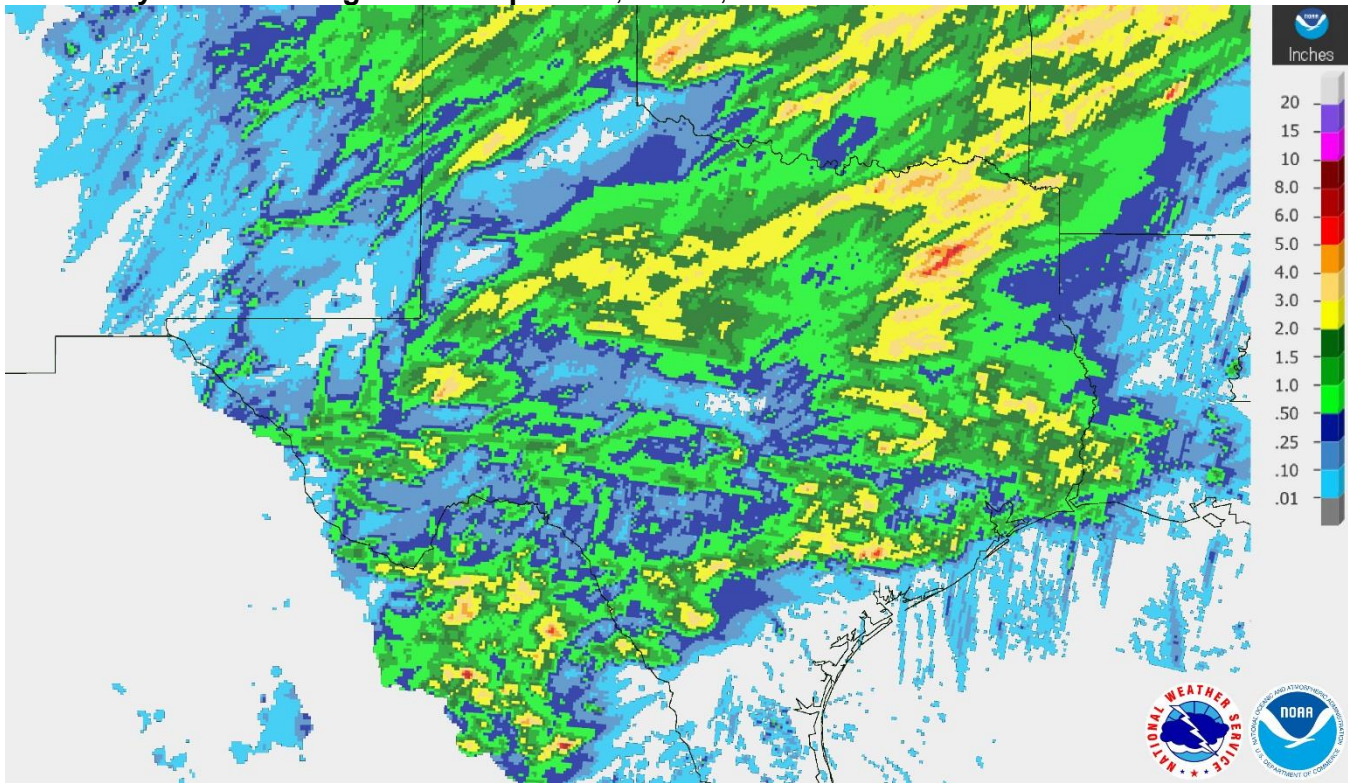
District	Topsoil Moisture Condition by District				Subsoil Moisture Condition by District				Days Suitable for Fieldwork
	Percentage of Acreage				Percentage of Acreage				
	Very Short	Short	Adequate	Surplus	Very Short	Short	Adequate	Surplus	
11	0	5	62	33	0	5	61	34	4.8
12	3	20	53	24	2	6	61	31	5.9
21	0	7	80	13	1	8	61	30	4.2
22	0	0	48	52	0	3	61	36	3.5
30	0	0	46	54	0	0	61	39	3.8
40	0	3	55	42	0	2	61	37	4.1
51	0	2	56	42	0	0	61	39	6.2
52	0	10	55	35	0	10	61	29	6.0
60	11	35	54	0	10	29	61	0	6.1
70	2	14	78	6	2	11	83	4	5.3
81	0	29	65	6	0	15	81	4	5.7
82	6	22	67	5	1	15	61	23	7.0
90	2	10	63	25	2	7	61	30	4.7
96	3	28	56	13	3	14	61	22	6.3
97	20	60	20	0	20	60	20	0	1.9
State	2	12	57	29	1	8	62	29	4.9

Texas Agricultural Districts

- 11 Northern High Plains
- 12 Southern High Plains
- 21 Northern Low Plains
- 22 Southern Low Plains
- 30 Cross Timbers
- 40 Blacklands
- 51 North East
- 52 South East
- 60 Trans-Pecos
- 70 Edwards Plateau
- 81 South Central
- 82 Coastal Bend
- 90 Upper Coast
- 96 South
- 97 Lower Valley

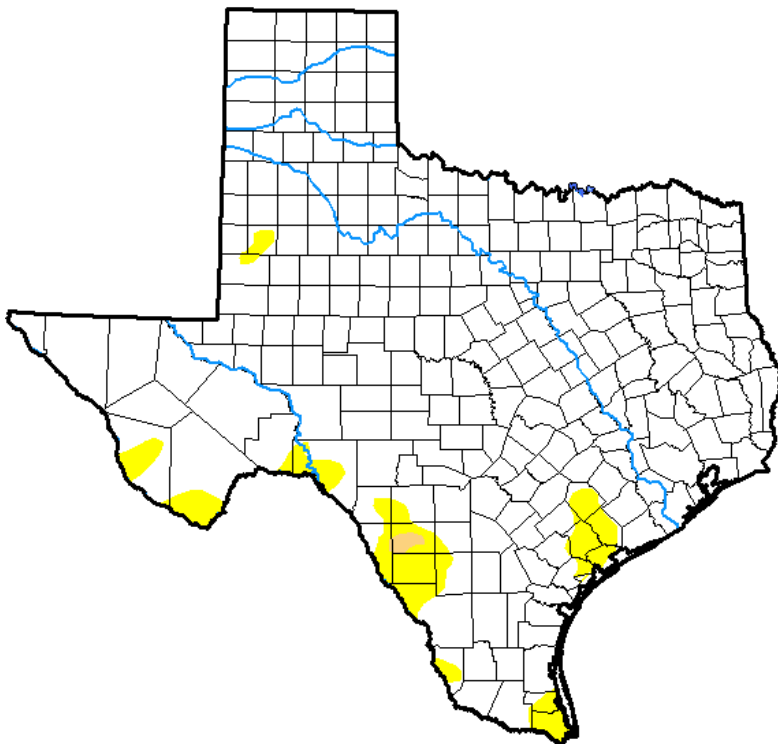


Seven Day Observed Regional Precipitation, June 2, 2019.



Source: National Weather Service, www.nws.noaa.gov.

Drought Monitor, Valid May 28, 2019.



Drought Conditions (Percent Area)

	None	D0-D4	D1-D4	D2-D4	D3-D4	D4
Current	94.24	5.76	0.20	0.00	0.00	0.00
Last Week <i>05-21-2019</i>	97.90	2.10	0.00	0.00	0.00	0.00
3 Months Ago <i>02-26-2019</i>	48.21	51.79	16.33	0.00	0.00	0.00
Start of Calendar Year <i>01-01-2019</i>	92.99	7.01	1.32	0.00	0.00	0.00
Start of Water Year <i>09-25-2018</i>	57.46	42.54	20.19	7.03	0.96	0.00
One Year Ago <i>05-29-2018</i>	31.26	68.74	40.06	21.93	7.82	1.17

Intensity:

- D0 Abnormally Dry
- D1 Moderate Drought
- D2 Severe Drought
- D3 Extreme Drought
- D4 Exceptional Drought

The Drought Monitor focuses on broad-scale conditions. Local conditions may vary. See accompanying text summary for forecast statements.

Author:

Richard Heim
NCEI/NOAA



Source: National Drought Mitigation Center, a partnership with USDA, U.S. Department of Commerce/NOAA, <http://droughtmonitor.unl.edu>.

Texas Crop Progress and Condition (3 June 2019)

USDA, National Agricultural Statistics Service, Southern Plains Regional Field Office