



Texas Crop Progress and Condition

Southern Plains Regional Field Office
Post Office Box 70 Austin, Texas 78767
(800) 626-3142 · FAX (855) 270-2725 · www.nass.usda.gov/tx

Issue: TX-CW0119 Weekly Summary for January 28-February 3 Released: February 4, 2019

Many areas of the state experienced warmer temperatures last week. Dry conditions prevailed across most of the state, but precipitation ranging between 0.5 and 1.5 inches was reported in the Upper Coast and the Coastal Bend. There were 5.6 days suitable for fieldwork.

Small Grains: Winter wheat in the High Plains and the Northern Low Plains continued to develop, but was in need of moisture. Winter wheat condition varied in the Edwards Plateau. Producers in areas of South Texas had begun irrigating winter wheat. Warmer temperatures aided small grain crops to continue development in the Cross Timbers. In some areas of the Blacklands, producers were finally able to finish small grain seedings that had been delayed by wet weather earlier.

Row Crops: Cotton harvest wrapped up in the High Plains, but continued in the Low Plains and the Blacklands. Wet conditions in South Central Texas and the Upper Coast caused producers to delay field preparation for upcoming corn and cotton seasons.

Fruit, Vegetable and Specialty Crops: Warmer temperatures had some fruit and ornamental trees beginning to bloom in the Blacklands. Pecan harvest was nearing completion in the Cross Timbers. Potato planting along with cabbage and spinach harvest were in full swing in South Texas. Sugarcane harvest continued in the Lower Valley.

Livestock, Range and Pasture: Cattle was rated in fair to good condition. Use of supplemental feeding was reported across much of the state. Pasture and range condition was rated 68 percent fair to good, though pasture conditions varied greatly across the state. Some areas were still feeling the effects of high moisture and hard freezes experienced from the passage of a recent cold front.

Crop	Crop Condition					Index ¹	
	Percent of Acreage					2019	2018
	Excellent	Good	Fair	Poor	Very Poor		
Wheat	3	24	52	15	6	60	(NA)
Oats	4	30	34	7	25	55	(NA)
Range and Pasture	4	27	41	22	6	--	--

1. The formula for the condition index is $I = (5V + 25P + 60F + 90G + 110E)/100$ where I = crop condition index and V, P, F, G, E = percentage of crop rated very poor, poor, fair, good, excellent.
(NA) Not available.

Crop Progress

Stage	Percent of Acreage			
	Current Week	Previous Week	Previous Year	5 Year Average
Cotton Harvested	92	(NA)	99	99
Winter Wheat Emerged	96	(NA)	95	96
Oats Emerged	95	(NA)	99	98

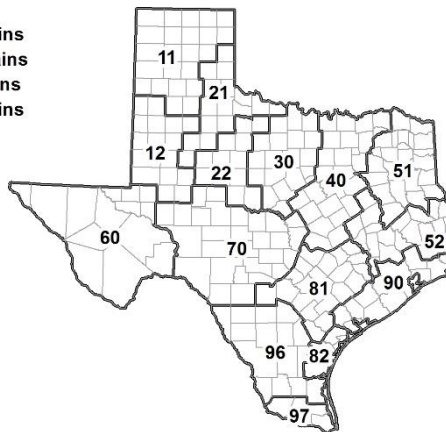
(NA) Not available.

Soil Moisture and Days Suitable by District

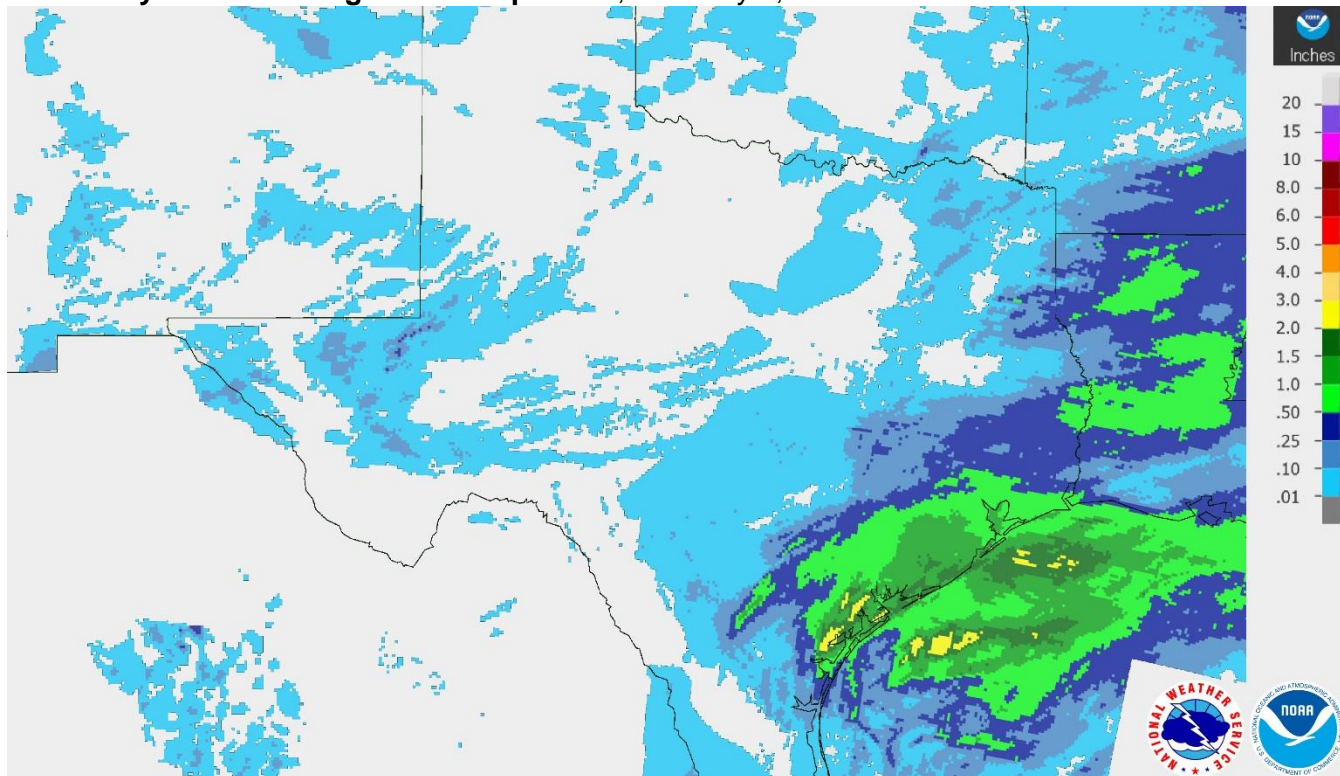
District	Topsoil Moisture Condition by District				Subsoil Moisture Condition by District				Days Suitable for Fieldwork
	Percentage of Acreage				Percentage of Acreage				
	Very Short	Short	Adequate	Surplus	Very Short	Short	Adequate	Surplus	
11	17	50	33	0	10	32	58	0	6.9
12	16	77	7	0	24	46	30	0	6.5
21	11	40	49	0	3	38	58	1	6.8
22	0	16	73	11	1	3	85	11	6.4
30	0	12	85	3	0	2	95	3	6.2
40	0	4	67	29	0	3	54	43	4.3
51	0	2	40	58	0	0	41	59	6.6
52	1	5	43	51	1	3	47	49	4.2
60	46	40	14	0	49	40	11	0	6.6
70	1	8	78	13	0	5	70	25	6.7
81	0	2	45	53	0	1	65	34	2.8
82	0	0	22	78	0	0	22	78	3.1
90	0	0	8	92	0	0	9	91	1.3
96	2	24	74	0	16	15	69	0	5.8
97	20	60	20	0	20	60	20	0	4.8
State	8	32	42	18	8	21	51	20	5.6

Texas Agricultural Districts

- 11 Northern High Plains
- 12 Southern High Plains
- 21 Northern Low Plains
- 22 Southern Low Plains
- 30 Cross Timbers
- 40 Blacklands
- 51 North East
- 52 South East
- 60 Trans-Pecos
- 70 Edwards Plateau
- 81 South Central
- 82 Coastal Bend
- 90 Upper Coast
- 96 South
- 97 Lower Valley

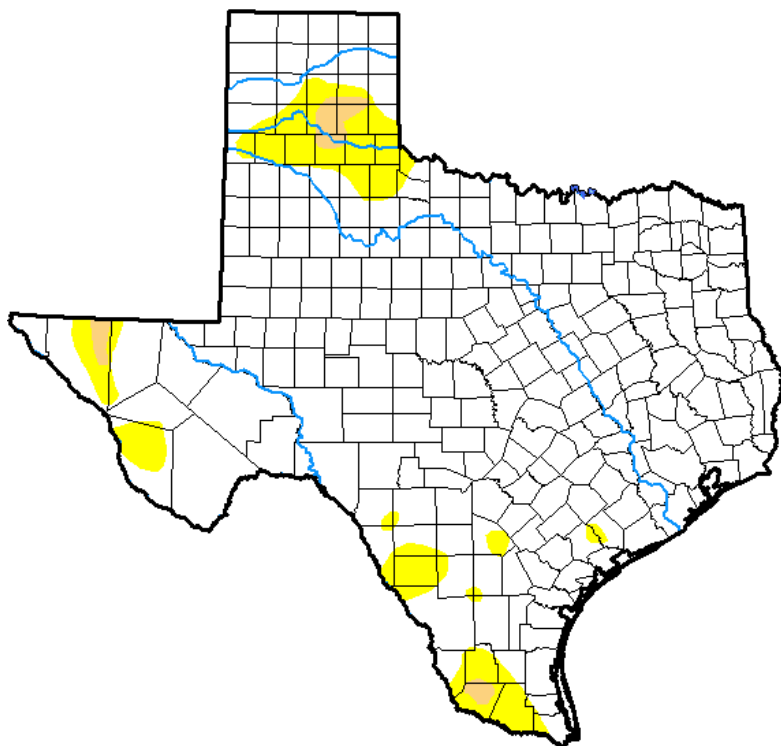


Seven Day Observed Regional Precipitation, February 3, 2019.



Source: National Weather Service, www.nws.noaa.gov.

Drought Monitor, Valid January 29, 2019.



Drought Conditions (Percent Area)

	None	D0-D4	D1-D4	D2-D4	D3-D4	D4
Current	90.22	9.78	1.15	0.00	0.00	0.00
Last Week <i>01-22-2019</i>	90.39	9.61	2.45	0.00	0.00	0.00
3 Months Ago <i>10-30-2018</i>	96.15	3.85	1.84	0.43	0.00	0.00
Start of Calendar Year <i>01-01-2019</i>	92.99	7.01	1.32	0.00	0.00	0.00
Start of Water Year <i>09-25-2018</i>	57.46	42.54	20.19	7.03	0.96	0.00
One Year Ago <i>01-30-2018</i>	13.27	86.73	56.47	21.98	7.30	0.00

Intensity:

- D0 Abnormally Dry
- D1 Moderate Drought
- D2 Severe Drought
- D3 Extreme Drought
- D4 Exceptional Drought

The Drought Monitor focuses on broad-scale conditions. Local conditions may vary. See accompanying text summary for forecast statements.

Author:

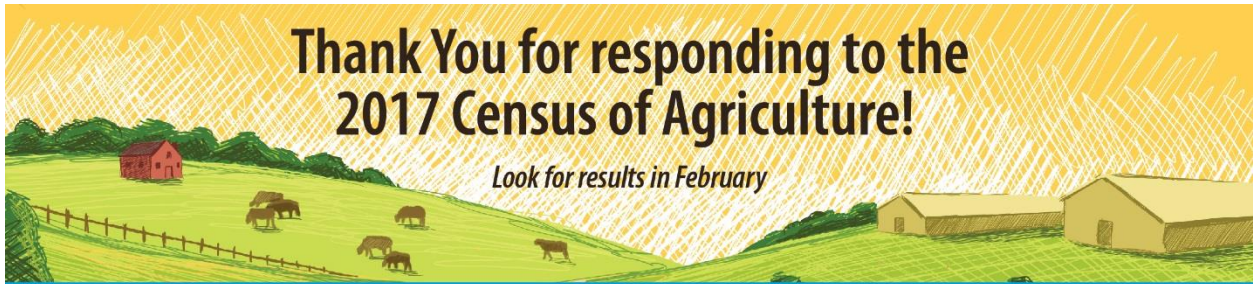
Brian Fuchs
National Drought Mitigation Center



Source: National Drought Mitigation Center, a partnership with USDA, U.S. Department of Commerce/NOAA, <http://droughtmonitor.unl.edu>.

Thank You for responding to the 2017 Census of Agriculture!

Look for results in February



For more information about the census and its upcoming special studies, visit www.nass.usda.gov/AgCensus