



## Herd Health and Vaccination Basics

Jason Banta, Ph.D., PAS  
 Asst. Professor and Extension Beef Cattle Specialist  
 Texas A&M AgriLife Extension Service  
 Texas A&M University  
 Overton, TX

## Components of a herd health plan



- nutrition
- genetics
- biosecurity
- parasite control
- **vaccination**

## Cattle Diseases

- **bacterial**
- **viral**
- protozoal
- fungal
- other



## Bacterial Diseases

### clostridial diseases

- *Clostridium chauvoei* (black leg)
- *Clostridium septicum* (malignant edema)
- *Clostridium novyi* (black disease)
- *Clostridium sordellii* (gas-gangrene)
- *Clostridium perfringens type C&D* (enterotoxemia & enteritis)
- *Clostridium haemolyticum* (red water)
- *Clostridium tetani* (tetanus)
  - most clostridial vaccines do not contain tetanus, but a few do

## Bacterial Diseases Cont.

### respiratory

- *Mannheimia hemolytica* (*Pasteurella hemolytica*)
- *Pasteurella multocida*
- *Histophilus somni* (*Haemophilus somnus*)

### reproductive

- *Campylobacter fetus* (vibrio)
- *Leptospira sp.*, 5 traditional strains (lepto)
- *L. hardjo-ovis* (listed as HB on most vaccines)
- Brucellosis

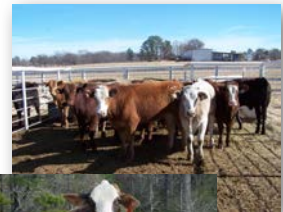
## Viral Diseases

### respiratory

- IBR
- BVD types 1 & 2
- PI-3
- BRSV

### reproductive

- IBR
- BVD



### Diseases Routinely Vaccinated For

**calves**

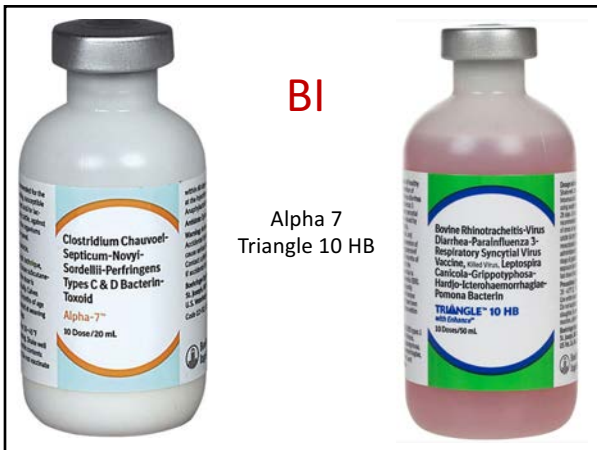
- clostridial diseases
- IBR, BVD, PI-3, BRSV
- lepto

**replacement heifers & cows**



- clostridial diseases
- IBR, BVD
- lepto & **vibrio**

consult with your veterinarian!!!!

### Examples of Basic Programs with Killed Respiratory Products



### Vaccine Handling

purchase vaccines from sources that understand the importance of proper handling

- store 35° to 45° F
- avoid direct sunlight

### Proper Mixing of Vaccines



components

- diluent
- dehydrated portion

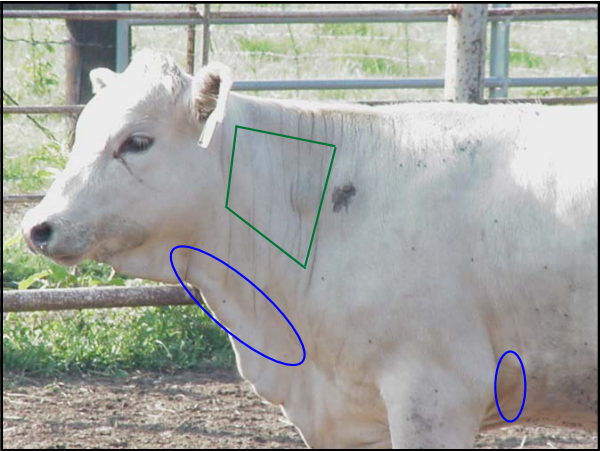
add diluent to dehydrated portion  
swirl until completely dissolved

- do not shake

use within 1 hr

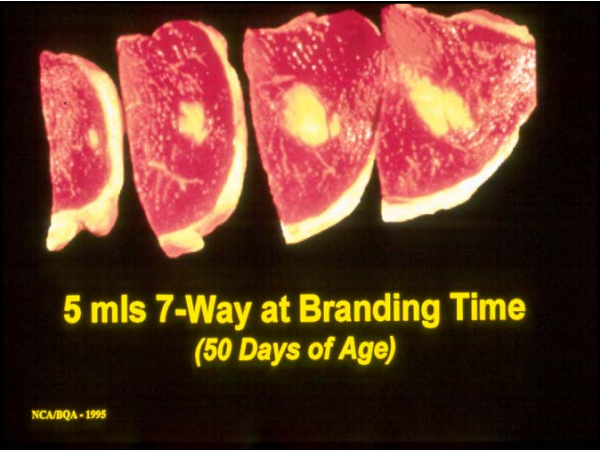
## Giving Injections



### Tented Technique



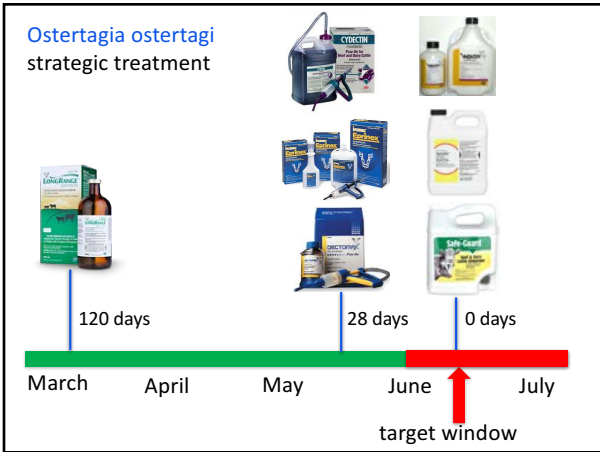
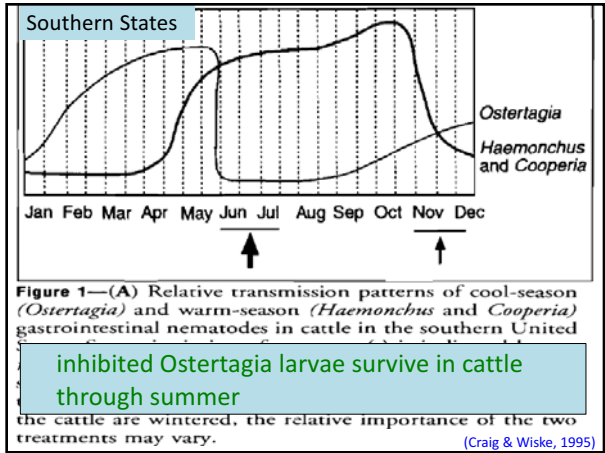
Must use both hands



**5 mls 7-Way at Branding Time  
(50 Days of Age)**

NCA/BQA - 1995

# Classes of Anthelmintics



# Product Selection & Purchasing Considerations

no rain concerns



no rain for at least 6 hours



flammable



**Pour-On Products:  
Slaughter Withdrawal**

0 days:

- Eprinex
- Cydectin

45 days:

- Dectomax

48 days:

- Ivomec



cost considerations

1300 lb cow  
0.5 liter: \$7.95  
10 liter: \$3.37



<http://beef.tamu.edu>

